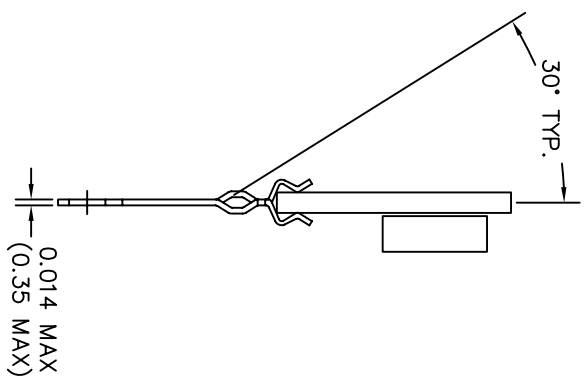
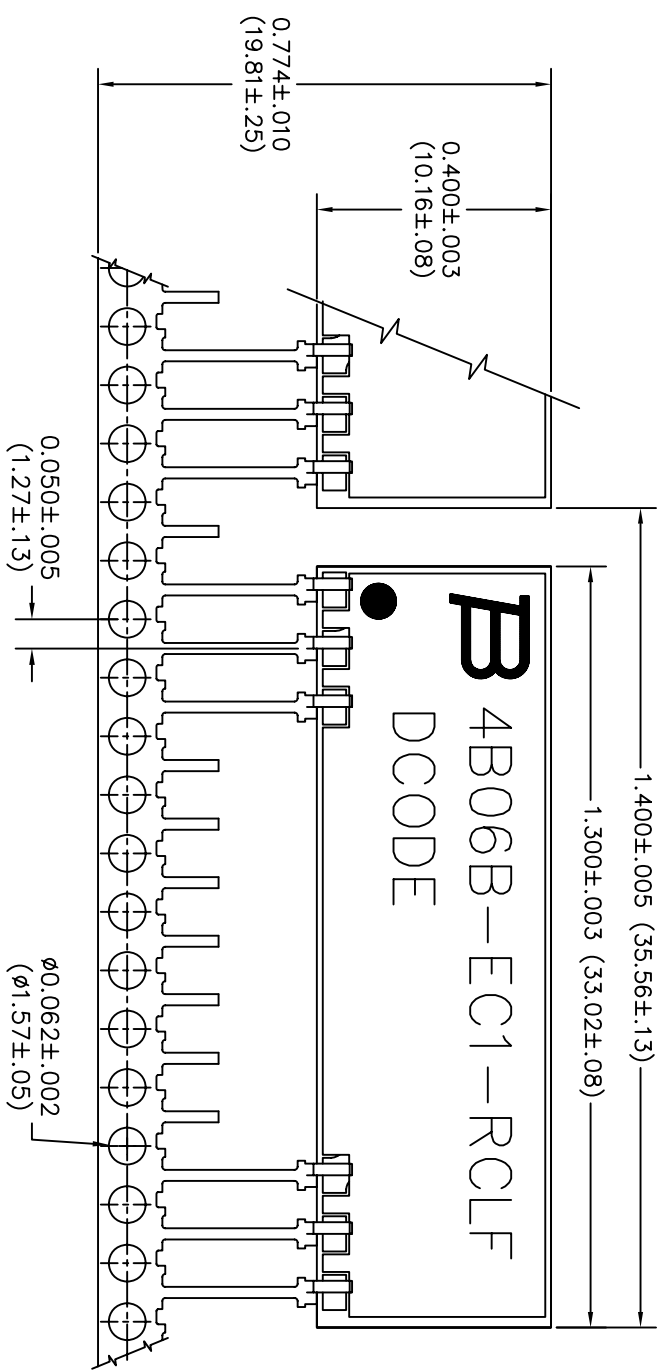


# FRAMING SPECIFICATION

THROUGH HOLE SIP SURGE

REV	E.O. NO.	DESCRIPTION	MADE BY	CHECKED BY	APPROVED BY
A	M9065	RELEASE TO PRODUCTION	Jenny 06/09	Vic 06/09	Daniel 06/09

## SUB ASSEMBLY FRONT



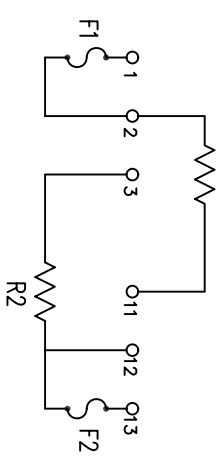
### MATERIALS

MATERIAL	PART NUMBER	USAGE	U/M
ELEMENT	EB06B-EC1-RCLF	1	EA
SOLDER PASTE	17790-10029	AR	GM
SOLDER WIRE	47790-50007	AR	GM
LEADFRAME	41335-01001	.014	KPIN
SOLDER BAR	17790-09004	AR	GM
PACKAGING TRAY	44980-02407	0.020833	EA

### FINAL TEST SPECIFICATIONS

RC	Res. No.	RESISTANCE			Final TOL (%)	Ratio TOL (%)
		Norm (Ohms)	High Pin	Low Pin		
100	R1	10	11	1	5%	R1/R2 = ±1%
	R2	10	13	3	5%	
150	R1	15	11	1	1%	±1%
	R2	15	13	3	1%	
200	R1	20	11	1	5%	±1%
	R2	20	13	3	5%	

### CIRCUIT SCHEMATIC



LINE PROTECTION MODULES

DRAWN BY	MM	06/19/09	SIZE	A
CHECKED BY	AM	06/19/09		
APP'D BY	BD	06/19/09		
TOLERANCES EXCEPT AS SHOWN				
1. DIMENSIONS IN INCHES (MILLIMETERS)				
2. DECIMAL TOLERANCES: .XX = ±.015 (0.381) .XXX = ±.003 (0.076)				
TITLE	LPM PRODUCT ASSY			
DWG. NO.	4B06B-EC1-RCLF			
CUSTOMER	CALIX			
SCALE	3X			
SHEET	1 OF 2			

THIS PRINT DISCLOSES SUBJECT MATTER IN WHICH BOURNS, INC. HAS PROPRIETARY RIGHTS. THE RECEIPT OR POSSESSION OF THIS PRINT DOES NOT CONFER, TRANSFER OR LICENSE THE USE OF THE DESIGN OR THE TECHNICAL INFORMATION SHOWN HEREIN. DISCLOSURE THEREOF TO OTHERS, OR MANUFACTURE OF ANY ARTICLE HEREFROM, IS FORBIDDEN, EXCEPT BY SPECIFIC PERMISSION FROM BOURNS, INC.

PRODUCT SPECIFICATION

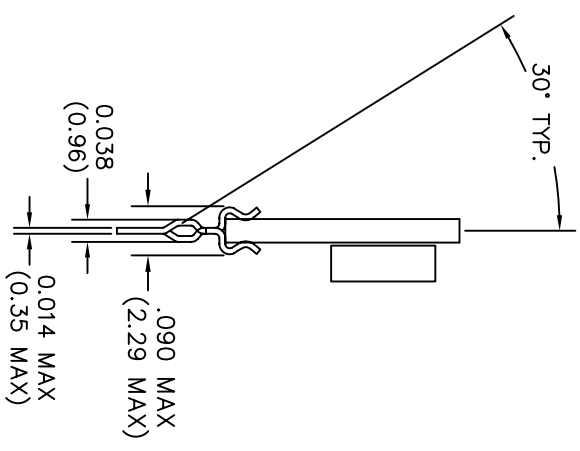
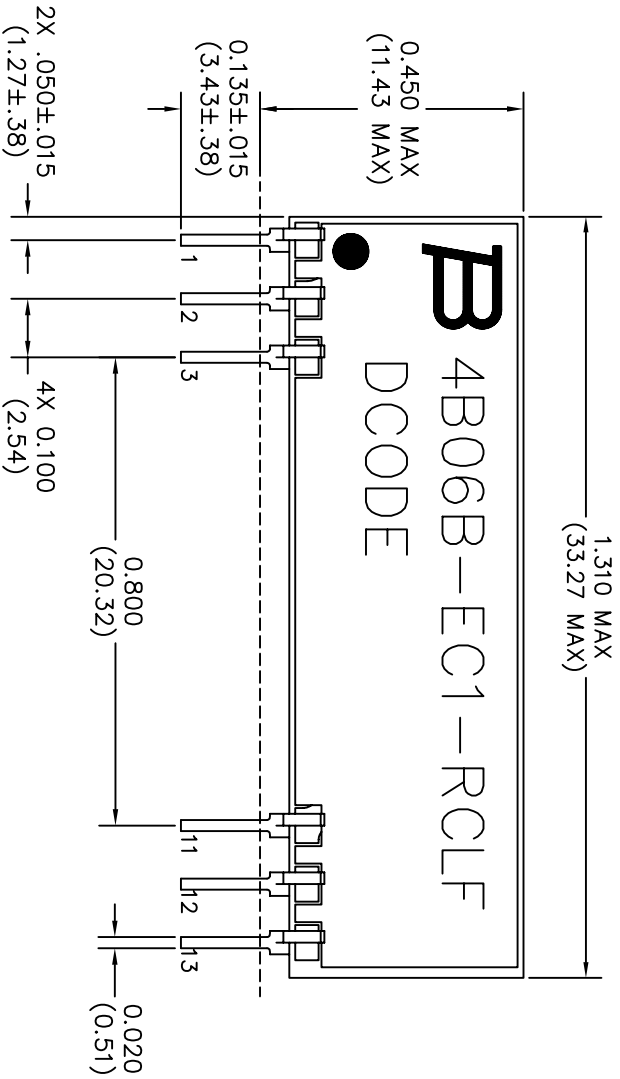
THROUGH HOLE SIP SURGE

REV LTR	E.O. NO.	DESCRIPTION	MADE BY	CHECKED BY	APPROVED BY
A		SEE SHEET ONE			

DWG. NO. 4B06B-EC1-RCLF

FINAL ASSEMBLY

FRONT



NOTES

3. FLUX MUST BE COMPLETELY WASHED OFF AFTER WAVE SOLDERING.
4. LEADFRAME FROM END TO END SHALL NOT BE DEFORMED BY ANY FRAMING OPERATION SUCH THAT THE THICKNESS OF THE LEADFRAME EXCEEDS 0.020" (i.e. CUT-OFF BURR).
5. TERMINAL CENTERLINE TO CENTERLINE MEASUREMENTS MADE AT POINT OF EMERGENCE OF LEAD FROM THE BODY.
6. MIN. PULL STRENGTH 4LBS.
7. LEADFRAME IS ALTERNATE CRIMP
8. DASHED LINE REPRESENTS SEATING PLANE (BOTTOM OF STAND-OFF).
9. PIN SPACING IS .100±.005. REMOVE PINS AS SHOWN.
10. PIN NUMBERS ARE SHOWN FOR REFERENCE ONLY.

THIS PRINT DISCLOSES SUBJECT MATTER IN WHICH BOURNS, INC. HAS PROPERTY RIGHTS. THE RECEIPT OR POSSESSION OF THIS PRINT DOES NOT CONFER, TRANSFER OR LICENSE THE USE OF THE DESIGN OR THE TECHNICAL INFORMATION SHOWN HEREIN, DISCLOSURE THEREOF TO OTHERS, OR MANUFACTURE OF ANY ARTICLE HEREFROM, IS FORBIDDEN, EXCEPT BY SPECIFIC PERMISSION FROM BOURNS, INC.

DRAWN BY		MM	06/19/09	SIZE	A
CHECKED BY		AM	06/19/09		
APP'D BY		BD	06/19/09		
TOLERANCES EXCEPT AS SHOWN					
1. DIMENSIONS IN INCHES (MILLIMETERS)					
2. DECIMAL TOLERANCES: .XX = ±.015 (0.381) .XXX = ±.003 (0.076)					
TITLE		LINE PROTECTION MODULES			
DWG. NO.		4B06B-EC1-RCLF			
COSTUMER		CALIX			
SCALE		3X			
SHEET		2 OF 2			

## X-ON Electronics

Largest Supplier of Electrical and Electronic Components

*Click to view similar products for [Surge Suppressors](#) category:*

*Click to view products by [Bourns](#) manufacturer:*

Other Similar products are found below :

[GUS1](#) [GUS12](#) [BSPM1A600D600LVR](#) [2800521](#) [29-2053](#) [GUS11](#) [GUS2](#) [GUS3](#) [GUS4](#) [30460](#) [SRA64C060X](#) [PC642C015](#) [1810-15-A3](#)  
[2713175](#) [4B06B-EC1-150LF](#) [SRA6LC](#) [BPMA75D100LV](#) [CX06M](#) [CCTV1](#) [GUS13](#) [GUS14](#) [GUS5](#) [GUS6](#) [VAL-MS 320/3+0-FM](#) [VAL-US-](#)  
[120/40/1+1-FM](#) [VAL-US-120/65/1+1-FM](#) [VAL-US-480D/30/3+0-FM](#) [VAL-US-120/40/1+0-FM](#) [STCHSP121BT1RU](#) [LP-BFDN-CW](#) [LP-](#)  
[STRL-NFF](#) [LP-STRL-DFE](#) [GUS22](#) [0804111](#) [5053609](#) [5053201](#) [SPD2-150-1P0](#) [SPD2-550-1P0](#) [6720005416](#) [6720005417](#) [1-2191595-2](#)  
[STC-CAT6-P0E-I](#) [SPD2-350-1P0](#) [FLT-CP-350-ST](#) [TTC-6P-3-HF-F-M-12DC-UT-I](#) [SMTPA200](#) [2800989](#) [2906776](#) [2906810](#) [2906847](#)