

Ferrite Beads

Special Features

- Excellent EMI suppression capability at high frequency
- Very low cost
- Higher impedance can be achieved with 2 or more beads in series
- Wider frequency range can be achieved with 2 beads of different material grade in series
- Operating temperature: -55 °C to +105 °C
- Storage temperature: -55 °C to +105 °C

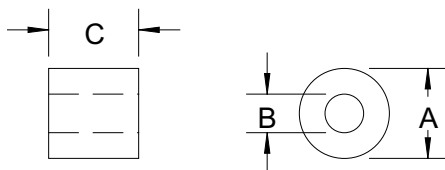
† RoHS Directive 2002/95/EC Jan 27 2003 including Annex.

FB Series					
Part Number	Material	Suggest Freq. Range (MHz)	Dim. A (min/max)	Dim. B (min/max)	Dim. C (min/max)
FB73-085-RC	73	Up to 40	0.052/0.056	0.027/0.031	0.085/0.095
FB43-226-RC	43	40 - 200	0.123/0.153	0.040/0.060	0.221/0.251
FB73-226-RC	73	Up to 40	0.125/0.155	0.040/0.060	0.221/0.251
FB43-110-RC	43	40 - 200	0.125/0.155	0.040/0.060	0.113/0.143
FB64-110-RC	64	200 and up	0.125/0.155	0.040/0.060	0.113/0.143
FB73-110-RC	73	Up to 40	0.123/0.153	0.040/0.060	0.113/0.143
FB43-422-RC	43	40 - 200	0.185/0.215	0.050/0.070	0.412/0.462
FB73-422-RC	73	Up to 40	0.185/0.215	0.050/0.070	0.412/0.462
FB43-287-RC	43	40 - 200	0.281/0.311	0.084/0.104	0.282/0.312
FB73-287-RC	73	Up to 40	0.281/0.311	0.084/0.104	0.282/0.312

“-RC” suffix indicates RoHS compliance.



Model FB73-287-RC is currently available but not recommended for new designs.



Dimensions: Inches

X-ON Electronics

Largest Supplier of Electrical and Electronic Components

Click to view similar products for [Ferrite Cable Cores](#) category:

Click to view products by [Bourns](#) manufacturer:

Other Similar products are found below :

[FB73-422](#) [FX28R0984-0](#) [FX28R0984-2](#) [AB 3X2X3SM](#) [2643164251](#) [2643665709](#) [2661626402](#) [28R1127](#) [28R1260](#) [28R1575](#) [SM28R0760](#)
[2631006302](#) [2643165451](#) [2643178351](#) [28R0760](#) [SS7X4X3W](#) [4327 030 16141](#) [2643103102](#) [2643164151](#) [2943666671](#) [2643163851](#)
[28B1101](#) [SM28R1575](#) [2643625902](#) [2643626102](#) [2643480009](#) [2673069901](#) [28B0268-000](#) [28B0375-100](#) [28B0375-300](#) [28B0375-400](#)
[28B0500-100](#) [28B0562-000](#) [28B0562-200](#) [28B0625-100](#) [28B1020-100](#) [28B1417-200](#) [28R1101-000](#) [28R1102-100](#) [28R1127-500](#) [28R0453-](#)
[200](#) [28R0669-000](#) [28R0756-200](#) [28R0480-000](#) [28R1127-000](#) [28R0984-200](#) [28R2170-100](#) [28R0592-010](#) [28R0756-000](#) [28R0984-000](#)