

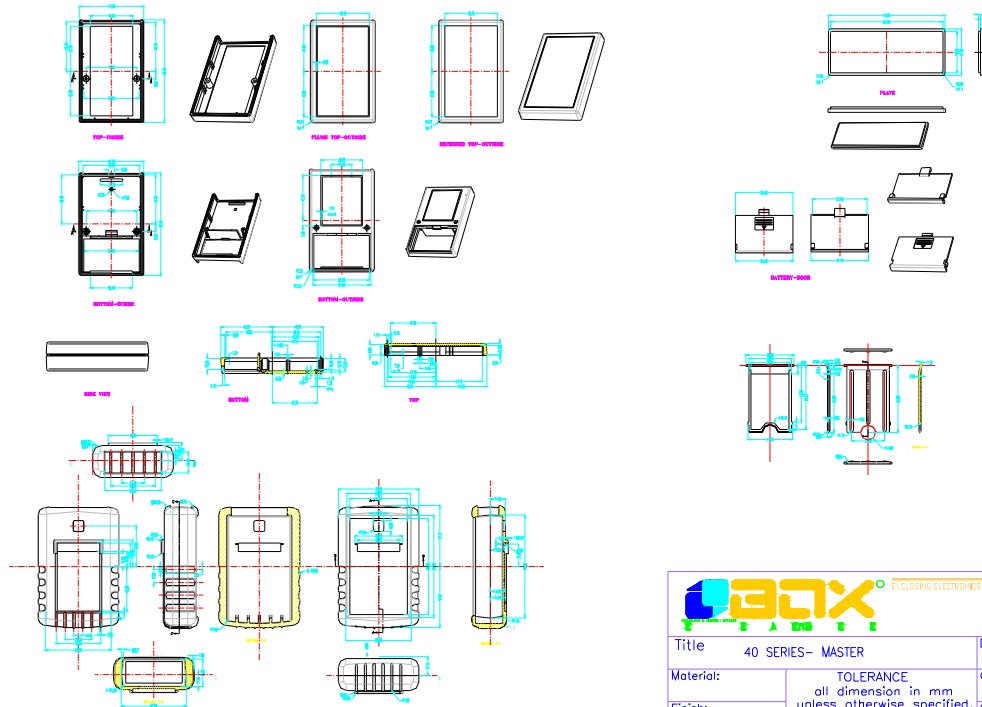


ENCLOSING ELECTRONICS ONE BOX AT A TIME



BOX ENCLOSURES, INC

28835 N. HERKY DRIVE, #114,
LAKE BLUFF, IL 60044

TEL: 847-932-4700 WWW.BOXENCLOSURES.COM FAX: 847-932-4701



THIS DRAWING IS THE PROPERTY OF AND MAY CONTAIN PROPRIETARY INFORMATION OWNED BY BOX[®] Enclosures. If it is provided under a CONFIDENTIAL RELATIONSHIP FOR A SPECIFIC PURPOSE, THE RECIPIENT AGREES TO USE IT ONLY FOR SUCH PURPOSE AND RETURN IT TO BOX[®] ENCLOSURES UPON REQUEST.

 ENCLOSING ELECTRONICS ONE BOX AT A TIME		Revision:	
Title 40 SERIES- MASTER		Model:	
Material:		Dwg. No.:	Part No.:
Finish:		Color:	Drn. Date 12-13-01
Proj. 		Qty:	Chk. Date
TOLERANCE all dimension in mm unless otherwise specified. x ±0.20 .x ±0.10 .xx ±0.05 ANGLE ±0.5°		App. Date	
		A1 Sheet 1 of 1	

X-ON Electronics

Largest Supplier of Electrical and Electronic Components

Click to view similar products for [box enclosures manufacturer](#):

Other Similar products are found below :

[101-42-NO-R-BO](#) [B2-080SI](#) [B1-120BL](#) [B2-160SI](#) [40-12-NO-F-BL](#) [40-RBT-BLK](#) [40-12-9V-R-BO](#) [55-RBT-BL](#) [B4-220BK](#) [SK1](#) [40-12-9V-F-BO](#) [90-RBT-BL](#) [101-42-4A-R-BL](#) [SK4](#) [SBH-9V-BK](#) [100-42-NO-F-BL](#) [40-RBT-YEL](#) [21G-BK](#) [55-12-9V-R-BL](#) [SBH-4AA-BK](#) [55-12-2A-R-BL](#) [ASK71](#) [B3-080RD](#) [EC2-BK](#) [WTS127S](#) [ASK70](#) [100-42-9V-F-BL](#) [55-RBD-DBL](#) [ASK74](#) [MBS107](#) [B4-080BK](#) [101-42-9V-R-BL](#) [ASK72](#) [B3-220BK](#) [B1-080SI](#) [B3-080BL](#) [B4-160BL](#) [B2-080BL](#) [40-RBT-BL](#) [101-42-4A-R-BO](#) [B2-160BK](#) [90-RBT-DBL](#) [B4-160BK](#) [MBM107](#) [PBS107](#) [SBH-29V-BK](#) [PBS109](#) [MBM109](#) [PBM107](#) [PBL109](#)