



Quality is in the BEX!

- HOME
- New! 2008 Catalog
- Secondary Operations Product Customization
- Custom Enclosure Design
- Custom Protective Boots
- FULL! Product Assembly
- Technical Data Sheets
- about us
- World Wide Distributor



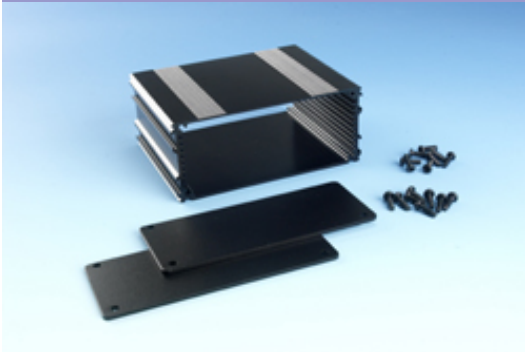
Phone: 847-932-4700
Fax: 847-932-4701



28915 N. Herky Drive, BLD# 107
Lake Bluff, IL 60044 USA
email: sales@boxenclosures.com

BEX Series 5

Detailed Product Sheet



Extruded aluminum case kit with 2 end panels and assembly screws - black HARD COAT anodized, 1.37 H x 5.25 W x 3.15 L" / deep

Part Number:	B5-080BK
Product name:	BEX Series 5
Color:	Black
Size:	1.37Hx5.25Wx3.15L"
Weight in pounds:	0.3
Material:	Aluminum 6063 T6 (HE9)

Technical Drawings:

	Quantity	Price
Price Brackets:	1 - 99	\$11.58
	100 - 249	call for price
	250 - 499	call for price
	500 - 999	call for price
	1000 - ∞	call for price



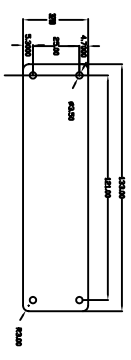
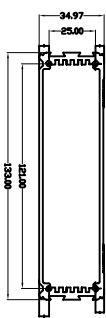
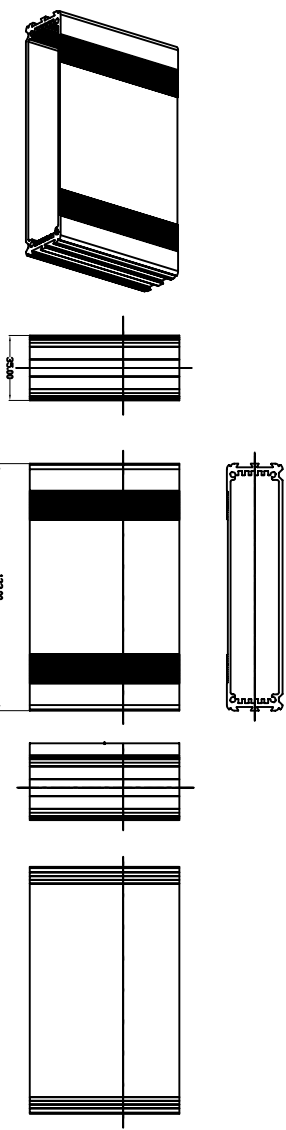
Optional Mounting Lugs Above
Dealers List

[Visit dealer's webpage](#)

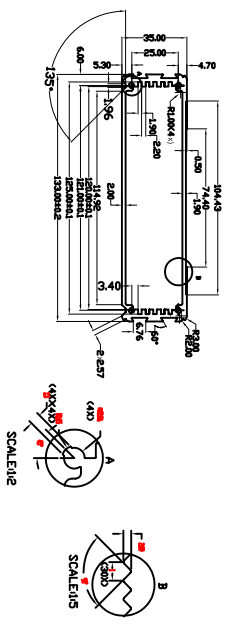
#278-0639


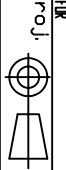


Box Enclosures & Assembly Services
28915 N. Herky Drive, BLD# 107, Lake Bluff, IL 60044 Phone 847-932-4700 Fax 847-932-4701
www.boxenclosures.com



EP5



 <p>ENCLOSURES & ASSEMBLY SERVICES</p>		Title: B - Hinge - Steel Length 60 x 133 mm		Dwg. No.:		Part No.:		Revisions:	
Material:		TOLERANCE all dimension in mm unless otherwise specified		Color:		Dwn. Date		Model:	
Finish:		x ±0.20 .xx ±0.10 .xx ±0.05 ANGLE ±0.5°		By:		Chk. Date		Model:	
Proj.				A4		Sheet 1 of 1		App. Date	

THIS DRAWING IS THE PROPERTY OF AND MAY CONTAIN PROPRIETARY INFORMATION OWNED BY Box Enclosures, IT IS PROVIDED UNDER A CONFIDENTIAL RELATIONSHIP FOR A SPECIFIC PURPOSE. THE RECIPIENT AGREES TO USE IT ONLY FOR SUCH PURPOSE AND RETURN IT TO Box Enclosure UPON REQUEST.

X-ON Electronics

Largest Supplier of Electrical and Electronic Components

Click to view similar products for [Box Enclosures manufacturer](#):

Other Similar products are found below :

[55-12-4A-R-BL](#) [BMC-205-5](#) [321-12-TW](#) [210-12-BK](#) [21G-GY](#) [40-12-NO-R-BO](#) [B2-080SI](#) [101-42-NO-R-BO](#) [55-RBT-DBL](#) [B2-160SI](#) [40-12-9V-R-BO](#) [55-RBT-BL](#) [40-12-9V-F-BO](#) [90-RBT-BL](#) [SK4](#) [B4-220BK](#) [101-42-4A-R-BL](#) [SBH-9V-BK](#) [40-RBT-YEL](#) [SBH-4AA-BK](#) [ASK71](#) [21G-BK](#) [55-12-2A-R-BL](#) [B1-120BL](#) [B3-080RD](#) [EC2-BK](#) [55-12-9V-R-BL](#) [100-42-NO-F-BL](#) [WTS127S](#) [ASK70](#) [ASK74](#) [B3-160SI](#) [101-42-9V-R-BL](#) [ASK72](#) [B3-220BK](#) [B4-080BK](#) [B1-080SI](#) [MBS107](#) [B4-160BK](#) [40-12-NO-F-BL](#) [B2-160BK](#) [B3-080BL](#) [B3-080SI](#) [90-RBT-DBL](#) [MBM107](#) [B3-160BK](#) [SBH-29V-BK](#) [B2-080BL](#) [PBS109](#) [MBM109](#)