

承 认 书
SPECIFICATION FOR APPROVAL

客户名称 Customer: _____

贵司料号CUSTOMER P/N: _____

敝司料号INTERIOR P/N: AA04A02010000018A

贵公司承认印 Approval signatures

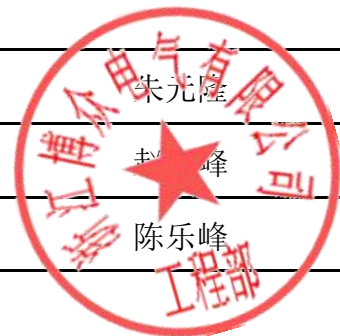
料号/Part No.	签章/Signatures

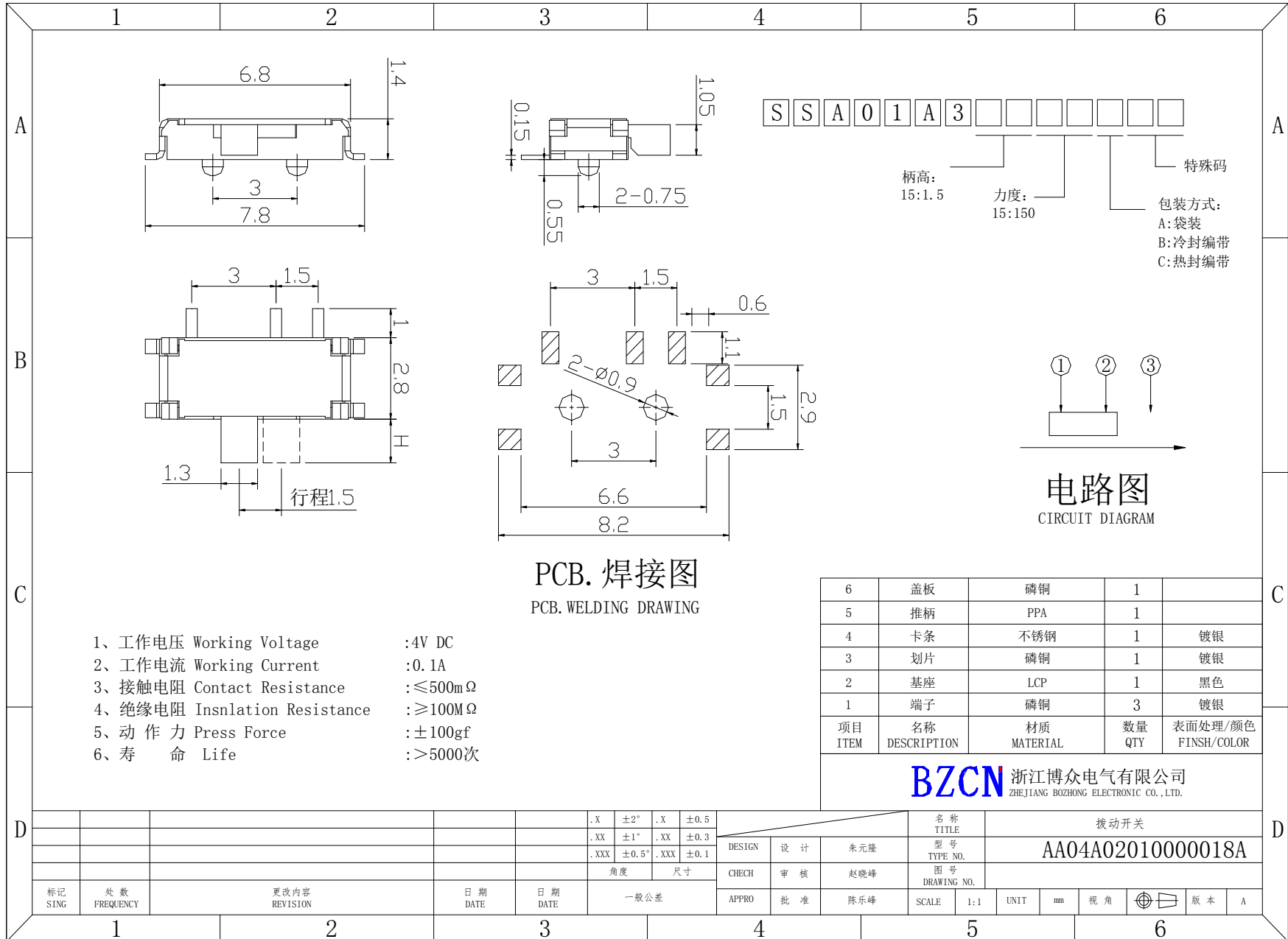
Send us a copy of reference, thank you!

日期 Date: _____

地址: 浙江省乐清市虹桥镇信岙工业区
Add: Xinao Industry Zone Hongqiao Yueqing
Zhejiang
电话/Tel: 86-0577-57573366
传真/Fax: 86-0577-57573373
Http://www.cnbozhong.com
Alibaba: Http://dezhimei.cn.alibaba.com

拟制/Drawn	朱光隆
审核/Check	陈乐峰
批准/Approved	陈乐峰





标记 SING		处数 FREQUENCY	更改内容 REVISION	日期 DATE	日期 DATE	一般公差	名称 TITLE	拨动开关
						.X $\pm 2^\circ$.X ± 0.5	DESIGN 设计	朱元隆
						.XX $\pm 1^\circ$.XX ± 0.3	CHECH 审核	赵晓峰
						.XXX $\pm 0.5^\circ$.XXX ± 0.1	APPRO 批准	陈乐峰
							SCALE 1:1	UNIT mm
							视角	版本 A

BZCN 浙江博众电气有限公司
ZHEJIANG BOZHONG ELECTRONIC CO.,LTD.

型号 TYPE NO. AA04A02010000018A

SPECIFICATION

1、基本事项 GENERAL SPECIFICATION

1.1 RATING (额定值): DC 4V 0.1A

1.2 使用温度范围: 在-10℃~+60℃温度内使用. PRACTICAL TEMPERATURE RANEG: - 10℃~+60℃.

1.3 测试标准状态: 在沒有指定的情况下测试温度, 湿度, 气压如下:

(1) 温度为5~35℃; (2) 湿度为45%~85%; (3) 气压为86Kpa~106Kpa.

STANDARD ATMOSPHEIC CONDITIONS :

UNLESS OTHERWISE SPECIFIED. THE STANDARD RANGE OF ATMOSPHERIC CONDITIONS FOR MAKING MEASUREMENTS AND TESTS ARE AS FOLLOWS:

(1) AMBIENT TEMPERATURE : 5℃ TO 35℃;

(2) RELATIVE HUMIDITY : 45% TO 85%;

(3) AIR PRESSURE : 86Kpa TO 106Kpa.

2、电气性能规格

ELECTRICAL CHARACTERISTICS

NO.	项目 ITEM	试验条件 CONDITIONS	TEST 要求 REQUIREMENTS
2.1	接触电阻 Contact Resistance	在1KHz微小电流(100mA 以下)测试. MEASURED AT 1KHz SMALL CURRENT(100 mAOR LESS)	≤500mΩ
2.2	绝缘电阻 Insulation Resistance	输入100V DC电压1分钟, 按以下接触方法测试: (1)接触端子之间. (2)胶座体和排脚之间. APPLY A VOLTAGE OF 100V DC FOR 1 MIN. FOLLOWING CONTACE TEST METHOD:	≥100MΩ

SPECIFICATION

2.3	介质耐压 Dielectric voltage proof	输入AC250V(50-60Hz) 电压, 1分钟感度电流 0.5mA, 接触测试方法如下: (1) 接触端子之间. (2) 外壳体和排脚之间. AC 250V(50-60Hz) FOR 1 MIN TRIP CURRENT:0.5mA THE FOLLOWING CONTACT TEST METHOD: (1) BETWEEN TERMINALS. (2) BETWEEN INDIVIDUAL TERMINALS AND FRAME.	没有绝缘破坏等异常 WITHOUT DAMAGE TO PARTS ARCING OR BREAKDOWN ETC.
-----	-------------------------------------	--	---

3、机械性能规格

MECHANICAL CHARACTERISTICS

NO.	项目 ITEM	试验条件 TEST CONDITIONS	要求 REQUIREMENTS
3.1	按力 Operating Force	侧向推动 LATERAL PUSH	参考图面
3.2	作行程 TRAVEL TO CLOSURE 动	在开关推柄运行的水平方向, 以一个等于2倍推力使开关从一个档位运动到下一档位, 测量推柄的移动距离. IN THE HORIZONTAL DIRECTION SWITCH HANDLE OPERATION, WITH AN EQUAL TO 2TIMES THE THRUST OF THE SWITCH FROM ONE POSITION TO THE NEXT GEAR, MOVING DISTANCE MEASURING HANDLE.	参考图面

SPECIFICATION

4、 极限电气性能

ENVIRONMENTAL SPECIFICATION

NO.	项目 ITEM	试验条件 TEST CONDITIONS	要求 REQUIREMENTS
4.1	寿命试验 LIFE TEST	操作者以每分钟30次的频率，施加不大于开关1倍的推力做5000次无负荷测试。 AN ACTUATOR SHALL BE WITH A THRUST OF NO GREAT THAN 1 TIMES SWITH POWER TO 5000 CYCLES AT A SPEED OF 30 CYCLES FOR 1 MIN.	1) 接触电阻不超于1MΩ. 2) 寿命:5000次 1) CONTACT RESISTANCESHALL BE 1MΩ MAX. 2) LIFETIME:5000 times
4.2	耐热实验 HEAT TEST	放置在温度85±2℃中96小时后，再放置正常室温中1小时后测定。 THE SWITCH SHALL BE STORED AT A TEMPERATURE OF 85±2℃ FOR 96 HOURS. AND THEN IT SHALL BE SUBJECTED TO THE CONTROLLED RECOVERY CONDITIONS FOR 1 HOUR AFTER WHICH	
4.3	耐冷实验 COLD TEST	放置在温度-20±2℃中96小时后，再放置正常室温中1小时后测定。 THE SWITCH SHALL BE STORED AT A TEMPERATURE OF-25±3℃ FOR 96 HOURS. AND THEN IT SHALL BE SUBJECTED TO THE CONTROLLED RECOVERY CONDITIONS FOR 1 HOUR AFTER WHICH MEASUREMENT SHALL BE MADE.	外观无异常，满足于机械， 电气性能 THERE SHALL BE NO DAMAGE ONAPPEARANCE. MECHANICAL AND ELECTRICAL CHARACTERISTICS SHALL BE SATISFIED.
4.4	潮湿实验 HUMIDITY TEST	放置在40±2℃相对湿度为80~85%环境中96小时后，再将样品放在正常室温中1小时后测定。 THE SWITCH SHALL BE STORED AT A TEMPERATURE OF 40±2℃ AND A HUMIDITY OF 80% TO 85% FOR 96 Hr. THEN THE JACK SHALL BE MAINTAINED AT STANDARD ATMOSPHERIC CONDITION FOR 1 Hr FOR OTHER PROCEDURES.	

SPECIFICATION

<p>4.5</p>	<p>盐雾试验 Salt Mist (铁材质不做盐雾要求)</p>	<p>在以下设定条件下进行测量： The switch shall be checked after following test: (1) 温度: 35°C ± 2°C temperature: 35°C ± 2°C (2) 盐溶液浓度: 5 ± 1% (质量百分比) salt solution : 5 ± 1% (solids by mass) (3) 时间: 8h Time: 8h 实验后的盐沉积物后水冲掉 After test, salt deposit shall be removed by running water.</p>	<p>金属件上没有腐蚀斑点 No remarkable corrosion shall be recognized in metal part.</p>
<p>4.6</p>	<p>焊锡条件 SOLDERING CONDITIONS</p>	<p>1) HAND SOLDERING 手焊: DVICE 工具: SOLDER IRON 电烙铁. 270°C MAX., 3 sec Max 2) REFLOW SOLDERING 回流焊: ≤ 250°C</p>	<p>外观无异常, 满足于机械, 电气性能 THERE SHALL BE NO DAMAGE ON APPEARANCE. MECHANICAL AND ELECTRICAL CHARACTERISTICS SHALL BE SATISFIED.</p>

X-ON Electronics

Largest Supplier of Electrical and Electronic Components

Click to view similar products for [Slide Switches](#) category:

Click to view products by [Bozhong Electric](#) manufacturer:

Other Similar products are found below :

[6-1437581-1](#) [M43R](#) [MHS123K15D](#) [MHS133K](#) [MMD](#) [MSS12A](#) [1825160-3](#) [1825167-2](#) [K232CB](#) [25139NLDB](#) [25449NAH](#) [1825078-1](#)
[1825080-4](#) [1825269-1](#) [1825270-2](#) [STS141RA04](#) [T2215BEN506](#) [GH46P000001](#) [GH49P010001](#) [25339NA](#) [25436NLDH](#) [M42A](#)
[AYZ0202AG](#) [L203091MS02Q](#) [4-1437581-7](#) [X2225CR-437W](#) [48BFSP3M2QT](#) [1101M1S3ZB8E2](#) [1-1437581-1](#) [TG39W000000](#) [MSS42G](#)
[T105S1CWZBE](#) [SLB124145](#) [SLB1280R5](#) [SLB1340R45](#) [25136NLDB](#) [TG39W000050](#) [25149NAH](#) [25439NAH](#) [TG36Y000050](#)
[GE36P000001](#) [46204LRX](#) [C56206L1X](#) [1977143-4](#) [1977144-4](#) [1977145-4](#) [HASS0194](#) [JS0001](#) [25149NAB](#) [GR5-1323-0800](#)