

www.BradyID.com/bmp41



BMP® 41
LABEL PRINTER

One and done.

One and done.

BMP[®]41 LABEL PRINTER

Print it once, print it all, get it done!

The BMP[®]41 label printer is the rugged, portable solution that gives you the versatility to create your own length or already-sized die-cut and continuous labels anywhere, anytime! The BMP[®]41 label printer is designed with you in mind. Get your labeling done easier and faster so you can get on with your day. You only need one printer to print everything you need.

Whether you are faced with your jobs for the day or one-off tasks, the BMP[®]41 printer saves you time and money by printing your labels once and getting it done.

- Quick cartridge loading with already matched ribbon
- Prints up to 250 labels per day at a print speed of 1.3" per second
- Drop-tested to ensure it can withstand any environment

Brady labels keep you in compliance with appropriate industry-specific regulations.

Exceptional material variety and durability

The BMP41 printer prints durable, true-sized 1" wide die-cut or continuous identification to maximize the amount of data on your label. Compatible with up to 10 different industry specified materials that last, the BMP41 prints for a variety of applications. Key applications include wire marking, sleeving, panel labeling, terminal block, patch panel, general identification and more!



Wide range of materials so you can print all your jobs on one printer

Rugged industrial bumpers with a grab and go grip to be on the move with you

Simple all-in-one, drop-in cartridges for quick and easy supply change and automatic label setup

Large graphical LCD display with backlight to see exactly what you're printing

Rechargeable battery for long lasting power supply

Built-in wizard-based applications and graphics to help create and print labels quickly and easily

QWERTY style keypad and hot keys for easier typing and reducing errors

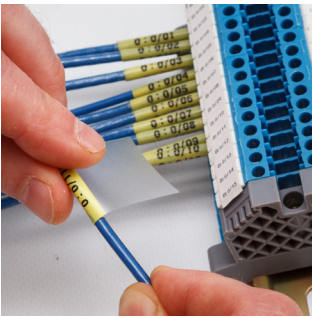
Sampling of the easy-to-use menu keys:

Label Type

General	Wire Marker	Flags	Terminal Block	Patch Panel	66-Block
110-Block	BIX Block	DesiStrip			

Symbol

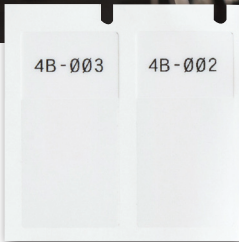
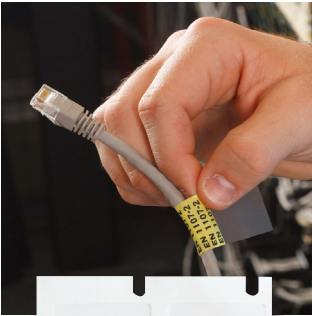
Arrows	Datacomm	Electrical	International	Fire	Mandatory
--------	----------	------------	---------------	------	-----------



Self-Laminating Wire & Cable Markers

Self-laminating markers features a clear, non printable area that wraps around wires and cable and serves as an overlamine to the printed text.

- Designed to adhere to highly curved surfaces, wires and cables
- Superior resistance to abrasion, handling, solvents, water, oil, dirt and more



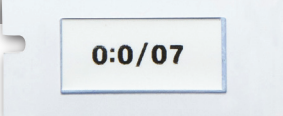
Catalog #	Color	Label Width Inch (mm)	Label Length Inch (mm)	Write-on Area Inch (mm)	Labels Per Roll	Wire Gauge	Max Wire Diameter Inch (mm)	Sized to Fit
B-427 – Self-Laminating Vinyl								
M-102-427	BK on WT	0.500 (12.7)	1.250 (31.7)	0.375 (9.5)	200	10 - 4 Gauge	0.270 (6.7)	CAT-6, 4 pair UTP Copper
M-11-427	BK on WT	0.500 (12.7)	0.750 (19.1)	0.375 (9.5)	360	16 - 10 Gauge	0.160 (4.1)	CAT-6, 4 pair UTP Copper
M-136-427	BK on WT	1.000 (25.4)	0.750 (19.1)	0.375 (9.5)	340	16 - 10 Gauge	0.160 (4.1)	CAT-6, 4 pair UTP Copper
M-143-427	BK on WT	1.000 (25.4)	1.250 (31.7)	0.500 (12.7)	200	10 - 4 Gauge	0.270 (6.7)	CAT-6, 4 pair UTP Copper, Fiber, Coaxial
M-47-427	BK on WT	1.000 (25.4)	0.500 (12.7)	0.375 (9.5)	360	12 - 10 Gauge	0.210 (5.3)	2 pair Fiber/Coaxial, Single/Multi-Mode
M-48-427	BK on WT	1.000 (25.4)	0.750 (19.1)	0.375 (9.5)	200	12 - 10 Gauge	0.210 (5.3)	CAT-6, 4 pair UTP Copper, Fiber, Coaxial
M-49-427	BK on WT	1.000 (25.4)	1.000 (25.4)	0.375 (9.5)	160	12 - 10 Gauge	0.210 (5.3)	2 pair Fiber/Coaxial, Single/Multi-Mode
M-51-427	BK on WT	1.000 (25.4)	2.500 (63.5)	0.750 (19.1)	110	3 Gauge - 2/0	0.530 (13.5)	25 pair Copper, 4-12 pair Fiber, Coaxial
M-51-427-YL	BK on YL	1.000 (25.4)	2.500 (63.5)	0.750 (19.1)	110	3 Gauge - 2/0	0.530 (13.5)	25 pair Copper, 4-12 pair Fiber, Coaxial
M-53-427	BK on WT	1.000 (25.4)	4.000 (101.6)	1.000 (25.4)	70	3/0 - 400 kcmil	0.850 (21.6)	50 pair Copper, 24 pair Fiber, Backbone
M-53-427-YL	BK on YL	1.000 (25.4)	4.000 (101.6)	1.000 (25.4)	70	3/0 - 400 kcmil	0.850 (21.6)	50 pair Copper, 24 pair Fiber, Backbone
M-89-427	BK on WT	0.500 (12.7)	1.500 (38.1)	0.500 (12.7)	180	10 - 4 Gauge	0.320 (8.1)	CAT-6, 4 pair UTP Copper
M-90-427	BK on WT	0.750 (19.1)	1.500 (38.1)	0.500 (12.7)	180	10 - 4 Gauge	0.320 (8.1)	CAT-6, 4 pair UTP Copper
M-91-427	BK on WT	1.000 (25.4)	1.500 (38.1)	0.500 (12.7)	180	10 - 4 Gauge	0.320 (8.1)	CAT-6, 4 pair UTP Copper, Fiber, Coaxial
M-91-427-YL	BK on YL	1.000 (25.4)	1.500 (38.1)	0.500 (12.7)	180	10 - 4 Gauge	0.320 (8.1)	CAT-6, 4 pair UTP Copper, Fiber, Coaxial
MC-750-427	BK on WT	0.750 (19.1)	25 ft (7.6 m)	0.375 (9.5)	1	16 - 10 Gauge	0.270 (6.7)	CAT-6, 4 pair UTP Copper



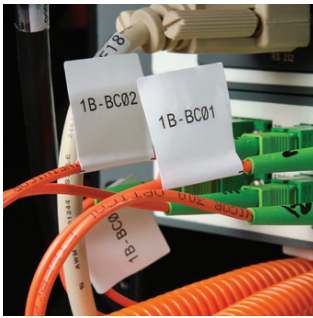
PermaSleeve® PS Wire Marking Sleeves

These heat-shrink sleeves are the ultimate in marker durability, permanence and aesthetic appearance. Fast shrink rate saves time and costs during installation. Meets SAE-AMS-DTL-23053/5C (class 1), SAE-AS-81531, MIL-STD-202, and tested per ASTM E162, ASTM E662

- 3:1 heat shrinkable sleeve that fits snugly around wires
- Fade-resistant and fade-retardant
- Available as individual die-cut markers or continuous cut-to-length tubing



Catalog #	Color	Label Width Inch (mm)	Label Length Inch (mm)	Labels Per Roll	Wire Gauge	Max Wire Diameter Inch (mm)
B-342 – Permasleeve® PS Wire Marking Sleeves						
M-125-075-342	BK on WT	0.750 (19.1)	0.235 (5.9)	80	22-16 Gauge	0.046 - 0.110 (1.2 - 2.8)
M-187-075-342	BK on WT	0.750 (19.1)	0.335 (8.5)	80	20-10 Gauge	0.062 - 0.150 (1.6 - 3.8)
M-250-075-342	BK on WT	0.750 (19.1)	0.439 (11.1)	80	16-8 Gauge	0.094 - 0.215 (2.4 - 5.5)
M-375-075-342	BK on WT	0.750 (19.1)	0.645 (16.4)	80	12-4 Gauge	0.125 - 0.320 (3.2 - 8.1)
MC-125-342	BK on WT	0.235 (5.9)	7 ft (2.1 m)	1	22-16 Gauge	0.046 - 0.110 (1.2 - 2.8)
MC-125-342-YL	BK on YL	0.235 (5.9)	7 ft (2.1 m)	1	22-16 Gauge	0.046 - 0.110 (1.2 - 2.8)
MC-187-342	BK on WT	0.335 (8.5)	7 ft (2.1 m)	1	20-10 Gauge	0.062 - 0.150 (1.6 - 3.8)
MC-187-342-YL	BK on YL	0.335 (8.5)	7 ft (2.1 m)	1	20-10 Gauge	0.062 - 0.150 (1.6 - 3.8)
MC-250-342	BK on WT	0.439 (11.1)	7 ft (2.1 m)	1	16-8 Gauge	0.094 - 0.215 (2.4 - 5.5)
MC-250-342-YL	BK on YL	0.439 (11.1)	7 ft (2.1 m)	1	16-8 Gauge	0.094 - 0.215 (2.4 - 5.5)
MC-375-342	BK on WT	0.645 (16.4)	7 ft (2.1 m)	1	12-4 Gauge	0.125 - 0.320 (3.2 - 8.1)



2A:1874
2A:1874
2A:1874
2A:1874
2A:1874

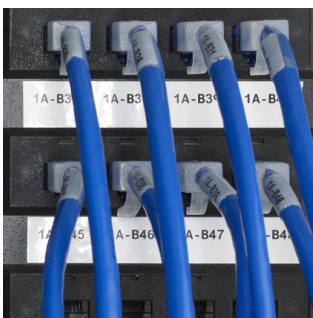


Wrap Around Wire & Cable Markers and Flags

Durable vinyl cloth wrap around wire and cable markers made with an adhesive that allows the markers to be removed cleanly and reapplied if necessary.

- Highly unique adhesive and cloth construction
- Ideal choice for marking both ends of a wire that may need be cut shorter before final termination

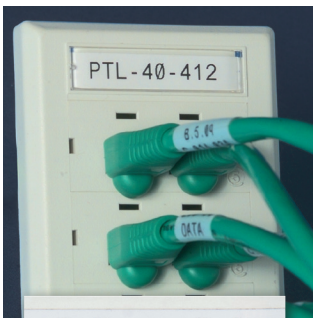
Catalog #	Color	Label Width Inch (mm)	Label Length Inch (mm)	Labels Per Roll	Wire Gauge	Max Wire Diameter Inch (mm)
B-498 – Repositionable Vinyl Cloth Labels						
M-11-498	BK on WT	0.500 (12.7)	0.750 (19.1)	220	16 - 10 Gauge	0.160 (4.1)
M-131-498	BK on WT	0.500 (12.7)	1.000 (25.4)	180	10 - 4 Gauge	0.270 (6.7)
M-163-498	BK on WT	0.500 (12.7)	1.000 (25.4)	180	12 - 10 Gauge	0.210 (5.3)
M-48-498	BK on WT	0.750 (19.1)	1.000 (25.4)	180	12 - 10 Gauge	0.210 (5.3)
M-49-498	BK on WT	1.000 (25.4)	1.000 (25.4)	160	12 - 10 Gauge	0.210 (5.3)
M-7-498	BK on WT	0.500 (12.7)	0.500 (12.7)	240	22 - 16 Gauge	0.110 (2.8)
M-91-498	BK on WT	1.000 (25.4)	1.500 (38.1)	120	10 - 4 Gauge	0.270 (6.7)
Catalog #	Color	Label Width Inch (mm)	Label Length Inch (mm)	Non-Print Area Inch (mm)	Labels Per Roll	Material Notes
B-499 – Nylon Cloth Labels						
M-141-499	BK on WT	1.000 (25.4)	1.000 (25.4)	0.250 (6.3)	90	Approx. 1.000" x 1.000" resulting flag size



Patch Panel, Punch Block, Desi Strip and Faceplate Labels

Create the labels you need in one easy process. Create a fully-formatted serialized punch block label to fit your equipment or label your ports, jacks and outlets with adhesive labels or slide-in strips.

- Durable materials with permanent adhesive
- Available in a variety of sizes and colors for marking racks, bays, frames, slots and other voice/data hardware
- High adhesion to textured metals, powder coated surfaces and low surface energy plastics



G-5 G-6
G-11 G-12

FD053V

Catalog #	Color	Label Width Inch (mm)	Label Length Inch (mm)	Labels Per Roll	Material Notes
B-412 – Polypropylene Tags					
MC-375-412	BK on WT	0.375 (9.5)	20 ft (6.1 m)	1	Non-Adhesive Slide-in Strips
MC-475-412	BK on WT	0.475 (12.1)	20 ft (6.1 m)	1	Non-Adhesive Slide-in Strips
MC-625-412	BK on WT	0.625 (15.8)	20 ft (6.1 m)	1	Non-Adhesive Slide-in Strips
B-422 – Polyester Labels					
MC-375-422	BK on WT	0.375 (9.5)	25 ft (7.6 m)	1	Adhesive Stick-on Strips
MC-475-422	BK on WT	0.475 (12.1)	25 ft (7.6 m)	1	Adhesive Stick-on Strips
M-7-422	BK on WT	0.500 (12.7)	0.500 (12.7)	280	Stick-on Individual labels
M-90-422	BK on WT	0.750 (19.1)	1.500 (38.1)	180	Stick-on Individual labels
M-89-422	BK on WT	0.500 (12.7)	1.500 (38.1)	180	Stick-on Individual labels
M-47-422	BK on WT	1.000 (25.4)	0.500 (12.7)	480	Stick-on Individual labels



Equipment, Component, Panel and Rating Plate Labels

Equipment and component labels are long-lasting, durable materials that make it easy to identify control, electrical materials and more. Ideal for marking backer boards, DIN rail, relays, PLCs, switches, solenoids and more. Rating plate labels create serial or rating plates with barcodes, graphics and more.

- Flexible with high-tack adhesives for easy and long-lasting adhesion
- Various sizes in several durable materials
- Rating plate labels offer a metal looking finish



Catalog #	Color	Label Width Inch (mm)	Label Length Inch (mm)	Labels / Roll
B-422 – Polyester Labels				
M-47-422	BK on WT	1.000 (25.4)	0.500 (12.7)	480
M-49-422	BK on WT	1.000 (25.4)	1.000 (25.4)	260
M-7-422	BK on WT	0.500 (12.7)	0.500 (12.7)	280
M-89-422	BK on WT	0.500 (12.7)	1.500 (38.1)	180
M-90-422	BK on WT	0.750 (19.1)	1.500 (38.1)	180
MC-375-422	BK on WT	0.375 (9.5)	25 ft (7.6 m)	1
MC-475-422	BK on WT	0.475 (12.1)	25 ft (7.6 m)	1
MC-500-422	BK on WT	0.500 (12.7)	25 ft (7.6 m)	1
MC-625-422	BK on WT	0.625 (15.8)	25 ft (7.6 m)	1
MC1-1000-422	BK on WT	1.000 (25.4)	25 ft (7.6 m)	1
B-428 – Metalized Polyester Labels				
M-47-428	BK on SV	1.000 (25.4)	0.500 (12.7)	480
M-60-428	BK on SV	1.000 (25.4)	2.000 (50.8)	140
M-92-428-BB	Bk on SV	0.500 (12.7)	1.130 (28.7)	239
B-483 – Ultra Aggressive Adhesive Polyester				
M-60-483	BK on WT	1.000 (25.4)	2.000 (50.8)	140

Catalog #	Color	Label Width Inch (mm)	Label Length Inch (mm)	Labels / Roll
B-499 – Nylon Cloth Labels				
M-11-499	BK on WT	0.750 (19.1)	0.500 (12.7)	1
M-128-499	BK on WT	1.000 (25.4)	1.900 (48.3)	1
M-130-499	BK on WT	0.825 (20.9)	0.375 (9.5)	1
M-131-499	BK on WT	1.000 (25.4)	0.500 (12.7)	1
M-141-499	BK on WT	1.000 (25.4)	1.000 (25.4)	1
M-84-499	BK on WT	0.900 (22.8)	0.500 (12.7)	1
MC-375-499	BK on WT	0.375 (9.5)	16 ft (4.9 m)	1
MC-500-499	BK on WT	0.500 (12.7)	16 ft (4.9 m)	1
MC-750-499	BK on WT	0.750 (19.1)	16 ft (4.9 m)	1
B-595 – Indoor/Outdoor Vinyl Tape				
MC-500-595-OR-BK*	BK on OR	0.500 (12.7)	25 ft (7.6 m)	1
MC-750-595-OR-BK*	BK on OR	0.750 (19.1)	25 ft (7.6 m)	1
MC1-1000-595-OR-BK*	BK on OR	1.000 (25.4)	25 ft (7.6 m)	1

* For additional general purpose tapes, refer to the Indoor/Outdoor Grade Facility and Safety Labels on page 7.



Bin, Storage, Reflective and General Industrial Labels

Choose from several materials and types of labels that offer an aggressive adhesive for use in commercial and industrial applications. Bin, storage & industrial labels are ideal for commercial/ industrial applications, while reflective can be used for low light or inclement weather conditions.

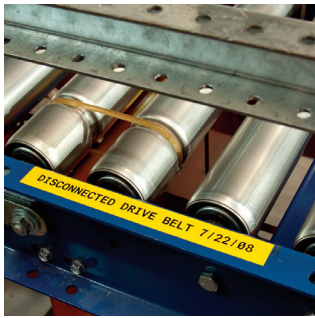
- Recommended for low surface energy and textured surfaces
- Reflective is ideal for outdoor utility poles and pedestals, job-site equipment and roof-top equipment



Catalog #	Color	Label Width Inch (mm)	Label Length Inch (mm)	Labels / Roll
B-422 – Polyester Labels				
M-47-422	BK on WT	1.000 (25.4)	0.500 (12.7)	480
M-49-422	BK on WT	1.000 (25.4)	1.000 (25.4)	260
M-7-422	BK on WT	0.500 (12.7)	0.500 (12.7)	280
M-89-422	BK on WT	0.500 (12.7)	1.500 (38.1)	180
M-90-422	BK on WT	0.750 (19.1)	1.500 (38.1)	180
MC1-1000-422	BK on WT	1.000 (25.4)	25 ft (7.6 m)	1
MC-375-422	BK on WT	0.375 (9.5)	25 ft (7.6 m)	1
MC-475-422	BK on WT	0.475 (12.1)	25 ft (7.6 m)	1
MC-500-422	BK on WT	0.500 (12.7)	25 ft (7.6 m)	1
MC-625-422	BK on WT	0.625 (15.9)	25 ft (7.6 m)	1
B-483 – Ultra Aggressive Adhesive Polyester				
M-47-483	BK on WT	1.000 (25.4)	0.500 (12.7)	480
M-60-483	BK on WT	1.000 (25.4)	2.000 (50.8)	140
B-499 – Nylon Cloth Labels				
M-11-499	BK on WT	0.750 (19.1)	0.500 (12.7)	220
M-128-499	BK on WT	1.000 (25.4)	1.900 (48.3)	100

Catalog #	Color	Label Width Inch (mm)	Label Length Inch (mm)	Labels / Roll
M-130-499	BK on WT	0.375 (9.5)	0.825 (20.9)	220
M-131-499	BK on WT	0.500 (12.7)	1.000 (25.4)	180
M-84-499	BK on WT	0.900 (22.8)	0.500 (12.7)	200
MC-375-499	BK on WT	0.375 (9.5)	16 ft (4.9 m)	1
MC-500-499	BK on WT	0.500 (12.7)	16 ft (4.9 m)	1
MC-750-499	BK on WT	0.750 (19.1)	16 ft (4.9 m)	1
B-584 – Reflective Tape				
MC-500-584	BK on WT	0.500 (12.7)	20 ft (6.1 m)	1
MC-500-584-YL	BK on YL	0.500 (12.7)	20 ft (6.1 m)	1
MC-750-584	BK on WT	0.750 (19.1)	20 ft (6.1 m)	1
MC-750-584-YL	BK on YL	0.750 (19.1)	20 ft (6.1 m)	1
B-595 – Indoor/Outdoor Vinyl Tape				
MC-500-595-RD-WT*	WT on RD	0.500 (12.7)	25 ft (7.6 m)	1
MC-750-595-RD-WT*	WT on RD	0.750 (19.1)	25 ft (7.6 m)	1
MC1-1000-595-RD-WT*	WT on RD	1.000 (25.4)	25 ft (7.6 m)	1

* For additional general purpose tapes, refer to the Indoor/Outdoor Grade Facility and Safety Labels on page 7.



Indoor / Outdoor Grade Facility & Safety Labels

Pliable vinyl that conforms well to smooth or rough surfaces such as pipes, walls, doors, panels, shelving, bins and equipment. Lasting up to 8-10 years outdoors, these labels offers excellence resistance to oils, detergents, dirt, grime and many solvents.

- Durable, low-shrink vinyl with our most aggressive adhesive
- Works for a variety of applications , including 5S labels, pipe markers, arc flash and chemical labels and more

Catalog #	Color	Label Width Inch (mm)	Label Length Inch (mm)	Labels / Roll	Catalog #	Color	Label Width Inch (mm)	Label Length Inch (mm)	Labels / Roll
B-595 – Indoor/Outdoor Vinyl Tape					MC-500-595-GN-WT	WT on GN	0.500 (12.7)	25 ft. (7.6 m)	1
MC-500-595-WT-BK	BK on WT	0.750 (19.1)	25 ft. (7.6 m)	1	MC-750-595-GN-WT	WT on GN	0.750 (19.1)	25 ft. (7.6 m)	1
MC-750-595-WT-BK	BK on WT	1.000 (25.4)	25 ft. (7.6 m)	1	MC1-1000-595-GN-WT	WT on GN	1.000 (25.4)	25 ft. (7.6 m)	1
MC1-1000-595-WT-BK	BK on WT	1.000 (25.4)	25 ft. (7.6 m)	1	MC-500-595-WT-RD	RD on WT	0.500 (12.7)	25 ft. (7.6 m)	1
MC-500-595-YL-BK	BK on YL	0.500 (12.7)	25 ft. (7.6 m)	1	MC-750-595-WT-RD	RD on WT	0.750 (19.1)	25 ft. (7.6 m)	1
MC-750-595-YL-BK	BK on YL	0.750 (19.1)	25 ft. (7.6 m)	1	MC1-1000-595-WT-RD	RD on WT	1.000 (25.4)	25 ft. (7.6 m)	1
MC1-1000-595-YL-BK	BK on YL	1.000 (25.4)	25 ft. (7.6 m)	1	MC-500-595-BK-WT	WT on BK	0.500 (12.7)	25 ft. (7.6 m)	1
MC-500-595-OR-BK	BK on OR	0.500 (12.7)	25 ft. (7.6 m)	1	MC-750-595-BK-WT	WT on BK	0.750 (19.1)	25 ft. (7.6 m)	1
MC-750-595-OR-BK	BK on OR	0.750 (19.1)	25 ft. (7.6 m)	1	MC1-1000-595-BK-WT	WT on BK	1.000 (25.4)	25 ft. (7.6 m)	1
MC1-1000-595-OR-BK	BK on OR	1.000 (25.4)	25 ft. (7.6 m)	1	MC-500-595-CL-BK	BK on CL	0.500 (12.7)	25 ft. (7.6 m)	1
MC-500-595-BL-WT	WT on BL	0.500 (12.7)	25 ft. (7.6 m)	1	MC-750-595-CL-BK	BK on CL	0.750 (19.1)	25 ft. (7.6 m)	1
MC-750-595-BL-WT	WT on BL	0.750 (19.1)	25 ft. (7.6 m)	1	MC1-1000-595-CL-BK	BK on CL	1.000 (25.4)	20 ft. (6.1 m)	1
MC1-1000-595-BL-WT	WT on BL	1.000 (25.4)	25 ft. (7.6 m)	1	MC-500-595-CL-WT	WT on CL	0.500 (12.7)	25 ft. (7.6 m)	1
MC-500-595-RD-WT	WT on RD	0.500 (12.7)	25 ft. (7.6 m)	1	MC-750-595-CL-WT	WT on CL	0.750 (19.1)	25 ft. (7.6 m)	1
MC-750-595-RD-WT	WT on RD	0.750 (19.1)	25 ft. (7.6 m)	1	MC1-1000-595-CL-WT	WT on CL	1.000 (25.4)	20 ft. (6.1 m)	1
MC1-1000-595-RD-WT	WT on RD	1.000 (25.4)	25 ft. (7.6 m)	1					

Terminal Block Markers

Specially-designed markers that offer a highly unique adhesive and vinyl cloth construction for excellent holding power, while still allowing for clean removal and application.

- Specially designed narrow-width continuous label for alignment on terminal blocks and patch panels
- LabelMark™ Software can auto-serialize these labels to help save you time



Catalog #	Color	Label Width Inch (mm)	Label Length Inch (mm)	Labels Per Roll
B-498 – Repositionable Vinyl Cloth Labels				
MC-240-498	BK on WT	0.240 (6.1)	16 ft (4.9)	1
MC-318-498	BK on WT	0.318 (8.1)	16 ft (4.9)	1
MC-375-498	BK on WT	0.375 (9.5)	16 ft (4.9)	1



Magnet Accessory Available



The BMP®41 printer offers a heavy-duty magnet accessory that allows you to go hands-free. Apply the magnet to the back of your printer and then stick it to a magnetized surface or wall.

BMP[®]41 LABEL PRINTER



Printer Part Numbers

Part #	Description
BMP41-KIT	BMP [®] 41 Label Printer Standard Package
BMP41-KIT-HC	BMP [®] 41 Label Printer Standard Package with Hard Case
BMP41-BATT	BMP [®] 41 Battery
BMP41-MAGNET	BMP [®] 41 Magnetic Accessory
BMP41-HC	BMP [®] 41 Hard Case
BMP41-QC	BMP [®] 41 External Battery Quick Charger
BMP41-AC	BMP [®] 41 AC Adapter
BMP41-USB	BMP [®] 41 USB Cable

* Printer ships with BMP Nickel Battery Pack (BMP-UBP), MC1-1000-595-WT-BK cartridge, USB Cable, AC Adapter (M50-AC), Product CD, Brady Printer Drivers CD and Quick Start Guide.

Printer Specifications

Applications	Wire and Cable ID, Datacomm and Audio/Visual labeling, Electrical ID, Panel ID, Product ID, Facility ID, Safety and Maintenance, General ID
Printing Modes	Wire Wrap, Terminal block, Patch panel, Flags, General, 66-Block, 110-Block, BIX Block, Desistrip
Printer Functions	Print Preview, Serialization, Date/time stamp, Fixed length, Mirror, Vertical, Rotate, Auto format, Multi-copy, Banner, Frame feature
Print Technology	Thermal transfer, 300 DPI
Print Speed	1.3" - 33mm/sec
Color Capability	Single Color Printing
Max Labels per Day	250
Keyboard Type	QWERTY
Cutter Type	Manual
LCD Size	2.5" x 1.5" with Backlit
Size	10.3" H x 6" W x 3.6" D
Weight incl. Battery, Media	2.85 lbs
Power Supply	Rechargeable NiMH Battery pack with life indicator or AC
Memory	48 MB / Up to 25000 Labels
PC/Software Connectivity	Optional through USB
Stand Alone Printing	Yes
Material Types	Continuous and Die Cut
Print Mechanism	Cartridge with ribbon match and smart cell media detection
Min/Max Label	0.235-1" width and up to 39" length
Material Variety	190+ stock parts
Material Types	Clear Polyester, Metalized Polyester, Polyester, Heat Shrink Polyolefin Tubing, Polypropylene, Self-laminating Vinyl, Vinyl, Vinyl Cloth
Font Sizes	4 to 103 point with autosizing
Built in Symbols	445
Barcode	Code 39 & UCC128 standalone, additional via software
Warranty	2 Years



Scan the QR code for more information

Learn more now about the BMP[®]41 Label Printer at www.BradyID.com/bmp41.



Y3324445

Voice / Data Communications Starter Kit

BMP41-KIT-VD BMP[®]41 DataComm Starter Kit

Kit includes one of each

BMP41-KIT	BMP [®] 41 Label Maker Standard Package
BMP41-HC	BMP [®] 41 Hard Case
M-51-427	1.0" White Label Roll (B-427) 110 each
MC-475-412	0.475" White Label Roll (B-412)
MC1-1000-595-YL-BK	1.0" Black on Yellow Label Roll (B-595)
MC1-1000-595-WT-BK	1.0" Black on White Label Roll (B-595)

Electrical Starter Kit

BMP41-KIT-EL BMP[®]41 Electrical Starter Kit

Kit includes one of each

BMP41-KIT	BMP [®] 41 Label Maker Standard Package
BMP41-HC	BMP [®] 41 Hard Case
M-143-427	1.0" White Label Roll (B-427) 200 each
M-48-498	1.0" White Label Roll (B-498)
M-187-075-342	0.75" White Label Roll (B-342)
MC1-1000-595-OR-BK	1.0" Black on Orange Label Roll (B-595)
MC1-1000-595-WT-BK	1.0" Black on White Label Roll (B-595)

Facility Identification Starter Kit

BMP41-KIT-GI BMP[®]41 Facility ID Starter Kit

Kit includes one of each

BMP41-KIT	BMP [®] 41 Label Maker Standard Package
MC1-1000-595-YL-BK	1.0" Black on Yellow Label Roll (B-595)
MC1-1000-595-WT-RD	1.0" Red on White Label Roll (B-595)
MC1-1000-595-GN-WT	1.0" White on Green Label Roll (B-595)
MC1-1000-595-WT-BK	1.0" Black on White Label Roll (B-595)
M-60-483	1.0" White Label Roll (B-483)

USA

Customer Service: 1-888-272-3946
 Inside Sales: 1-888-311-0775
www.BradyID.com

Canada

Customer Service: 1-800-263-6179
www.BradyCanada.ca

Mexico

1-800-262-7777
 Inside Sales: 1-800-262-7777 ext 177
www.BradyLatinAmerica.com

X-ON Electronics

Largest Supplier of Electrical and Electronic Components

Click to view similar products for [Printers category](#):

Click to view products by [Brady manufacturer](#):

Other Similar products are found below :

[1085267](#) [897252-000](#) [CU0620-000](#) [F39639-000](#) [FTP-020P0704](#) [PT110P01-E](#) [PTMBL1912A](#) [PWC-L07A1-W1-E](#) [DPU-V445-10B-E](#) [D-SCE-12-50-S1-4](#) [D-SCE-2.4-50-4](#) [D-SCE-3.2-50-S1-4](#) [EC9926-000](#) [ED4841-000](#) [IF2302-01UK-E](#) [IF9001-01P-E](#) [2000P-RIBBON-4AG-MED](#) [206868-000](#) [OP-LH200A-E](#) [CA1055-000](#) [LB1256-E](#) [LM-1/4-TUBE-WE](#) [308-LE](#) [SMS-V-19-9](#) [ACUH205A-E](#) [1813390001](#) [T300-RIBBON-WH-HIGH-PERF](#) [FTP-040P001](#) [FTP-622CT001](#) [FTP-628CU601R](#) [FTP-629Y601](#) [240205-000](#) [PW-C0725-W2-U](#) [HANDHELD-TMS-13.2-9](#) [HANDHELD-TMS-3.9-9](#) [HANDHELD-TMS-5.2-9](#) [3045950001](#) [351013-000](#) [RH-48-00-E](#) [4775630001](#) [TSK-508406-2.5CS8982](#) [TTC-PRINTER-PRINTHEAD-300](#) [HW-762254-5-9](#) [IF2301-01B](#) [IFC-001K-E](#) [IFH001-01B](#) [LM-1/2-TUBE-WE](#) [DPU-D3-01A-E](#) [D-SCE-12-50-9](#) [D-SCE-4.8-50-4](#)