

# BMP®51 and BMP®53 Label Makers

BradyID.com/bmp51

Portable Printers



**BMP®51**  
LABEL MAKER

**BMP®53**  
LABEL MAKER



## Made to get the job done.

Print continuous and die cut labels up to 1.5" wide and with more material options.

- Ribbon and label materials in one easy to load cartridge
- Fast print speed. Prints 1 inch per second!
- More than 200 label parts in 14 material types
- 1" sleeves and 1.5" wide continuous output
- Material recognition and automatic label formatting
- Large, graphical display with backlight
- Durable built-in cutter with label retention
- Compatibility with LabelMark™ software for advanced label design and data importation
- Built-in Bluetooth® technology or optional Wi-Fi card for wireless printing via a network
- Continuous and die-cut label materials available
- Tough, durable label materials that won't fade, smear or fall off



### View Online!

Visit [BradyID.com/bmp51](http://BradyID.com/bmp51) for more information on the BMP®51 and BMP®53 label printers.

### Your Complete Printing Solution:

BMP®51 & BMP®53 cartridges with label and print ribbon..... page 302



BMP®51 Label Maker

### Don't need the keyboard or screen?

Check out the BMP®53 Label Maker - many of the same features as the BMP®51 Label Maker, minus the display screen and keyboard.

- Create labels with LabelMark™ or CodeSoft™ Software, or using a Brady Mobile App on your smart phone
- Use the same label cartridges as BMP51

### BMP®51 & BMP®53 Label Printers

Catalog #	Description
BMP51	BMP51 Printer, Rechargeable Li-Ion Battery Pack and AC Adaptor/Battery Charger*
BMP51-KIT-AC	BMP51 Printer with AC Adaptor/Battery Charger*
BMP51-KIT-LMK	BMP51 Printer, LabelMark Software and AC Adaptor*
BMP53	BMP53 Peripheral Printer with AC Adaptor*
BMP53-KIT-AC-BP	BMP53 Printer, Rechargeable Li-Ion Battery Pack and AC Adaptor/Battery Charger*
BMP53-KIT-LMK	BMP53 Printer, LabelMark Software and AC

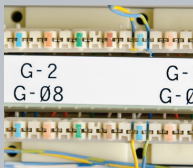
\* Printer ships with Hard Carrying Case, Battery Tray for AA batteries, USB Cable, Drivers CD, Product CD, Quick Start Guide, and one MC-1500-595-WT-BK. BMP53 printer also ships with a pre-installed WiFi network card. Network cards for BMP51 printer sold separately.

Patents applied for: 6,732,619 and 7,070,347 on the BMP51 and BMP53 Label Makers. 6,929,415 on the PermaSleeve® cartridges. 8,542,155 on wireless and ethernet cards.

### Accessories

Catalog #	Description
M50-MAGNET	BMP50 Series Magnet Accessory
BMP-UBP	Lithium Ion Rechargeable Battery Pack for Mobile Printers
BMP-UBP-AC	Lithium Ion Rechargeable Battery Pack with AC Adaptor/Battery Charger
142267	Brady Network Card - Ethernet only
142268	Brady Network Card - WiFi + Ethernet
M50-HC	BMP50 Series Hard Carrying Case
M50-SC	BMP50 Series Soft Carrying Case
M-AC-143110	BMP50 Series AC Adaptor/Battery Charger
M50-CABLE	BMP50 Series USB Cable
M50-BATT-TRAY	BMP50 Series Spare Battery Tray
LM5STDCD	LabelMark Standard Software - CD-ROM

## Get the job done FASTER, EASIER and WITH CONFIDENCE.



Voice & Data Communications



PermaSleeve® Wire Marking Sleeves



Product Identification



Facility & Safety Identification



Laboratory Identification



General ID ...and many more!

## X-ON Electronics

Largest Supplier of Electrical and Electronic Components

*Click to view similar products for [Printers category](#):*

*Click to view products by [Brady manufacturer](#):*

Other Similar products are found below :

[897252-000](#) [CU0620-000](#) [FTP-627USL402](#) [FTP-648MCL570](#) [PWC-L07A1-W1-E](#) [DPU-V445-10B-E](#) [D-SCE-12-50-S1-4](#) [IF2302-01UK-E](#)  
[IF9001-01P-E](#) [IFC-001K](#) [2000P-RIBBON-4AG-MED](#) [206868-000](#) [OP-LH200A-E](#) [LB1256-E](#) [LM-1/4-TUBE-WE](#) [308-LE](#) [ACUH205A-E](#)  
[1813390001](#) [FTP-628CU601R](#) [351013-000](#) [RH-48-00-E](#) [4775630001](#) [TTC-PRINTER-PRINTHEAD-300](#) [IF2301-01B](#) [IFC-001K-E](#) [IFH001-](#)  
[01B](#) [LM-1/2-TUBE-WE](#) [DPU-D3-01A-E](#) [D-SCE-12-50-9](#) [094514-000](#) [E64127-000](#) [T200-RIBBON-WH-4HT](#) [CP3963-000](#) [2000P-](#)  
[RIBBON-4AG-NAR](#) [2000P-RIBBON-WH-MED](#) [U001023895X1](#) [FTP-624Y002](#) [ED4098-000](#) [NC-LSC05](#) [TE3124-PRINTHEAD](#) [1-](#)  
[2186371-1](#) [NA02273-V061](#) [FTP-62GY601](#) [FTP-62GY301](#) [0803480:0001](#) [346933-000](#) [D-SCE-6.4-50-9](#) [FTP-628MCL506](#) [FTP-](#)  
[628MCL054#01](#) [1-2186503-1](#)