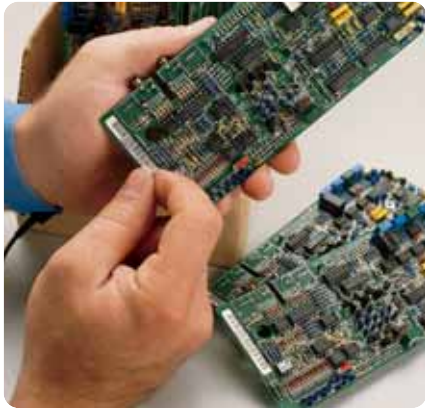


LASER PRINTABLE LABELS

Laser Labels Printable Materials Chart	128	Data Communications	
Label Index by Part Number	129	Equipment and Cabling Labels	140 – 141
Label Index by Size	130 – 135	General Identification Labels	142 – 143
Circuit Board and Component			
Identification	136 – 138		
Wire and Cable Marking	139		

Laser Printable Material Chart




The high resolution of laser printing makes it possible to generate readable, dense bar codes on labels small enough to fit into limited application space. (B-747 pictured)

Type	Max. Service Temp. °C	Colour	Finish	Use	Special Properties
Nylon Cloth					
B-799	90	White	Matt	Aerospace and military cable marking	Repositionable
Paper					
B-124	66	White/Colours	Matt	110 terminal block marking for telecommunications	Available in green, purple, yellow, blue, red, brown, white, orange and grey
B-759	90	White/Colours	Matt	Bar code and general labelling applications	Excellent toner adhesion
Polyolefin Film					
B-409	90	White	Matt	Bar code labels and general identification	Abrasion resistant
B-410	100	White	Matt	Tamper-evident label	Label destroys upon removal
Polyester					
B-361	110	Clear/White	Matt	Wire and cable marking, self-laminating	Low halogen and sulphur content
B-707	130	White	Matt	Electronic component labelling; general identification	Rough surface application; Stronger bond to low surface energy plastics  
B-709	70	White	Matt	Electronic component, bar code labels and general temporary identification	Removable
B-712	105	Clear	Matt	Electronic component labelling; general identification	Rough surface application; Stronger bond to low surface energy plastics
B-722	105	Clear	Matt	Rating plates, name plates, general-purpose printable overlaminates	Translucent
B-747	130	White/Yellow	Matt	Electronic PCB component, bar code labels and equipment labelling	Excellent solvent and smudge resistance; high-resolution printing; available in white only HF  
B-773	120	Silver	Matt	Rating plates and electronic component marking	Adheres to a variety of surfaces; metallized HF  
Polyimide					
B-652	300 *	Amber	Matt	Bottom PC board and SMT component marking	Withstands extremely high temperatures
Tedlar®					
B-737	130	White	Matt	Aerospace and military cable marking	Repositionable
Polypropylene					
B-425	90	White	Matt	Rating plates and general-purpose labelling	Excellent abrasion and smudge resistance

Tedlar® is a registered trademark of DuPont.
* 5 minutes

 *These materials are UL recognized.

 *These materials are CSA approved.

HF Halogen free DIN VDE 0472 Part 815

*Refer to the full page charts on pages 280-281 for more information and complete listing of parts.

Label Index by Part Number

LaserTab® Laser-Printable Labels

Order Reference	Size (mm)	Specifications on Page
LAT-1-652	7.62 x 6.35	130
LAT-1-747	7.62 x 6.35	130
LAT-2-652	9.53 x 9.53	130
LAT-2-747	9.53 x 9.53	130
LAT-3-410	16.51 x 6.35	130
LAT-3-652	16.51 x 6.35	130
LAT-3-747	16.51 x 6.35	130
LAT-4-410	20.32 x 6.35	130
LAT-4-652	20.32 x 6.35	130
LAT-4-737	20.32 x 6.35	130
LAT-4-747	20.32 x 6.35	130
LAT-4-747-YL	20.32 x 6.35	130
LAT-5-652	20.32 x 12.70	130
LAT-5-747	20.32 x 12.70	130
LAT-5-747-YL	20.32 x 12.70	130
LAT-5-759	20.32 x 12.70	131
LAT-6-652	25.40 x 6.35	131
LAT-6-747	25.40 x 6.35	131
LAT-7-410	25.40 x 12.70	131
LAT-7-652	25.40 x 12.70	131
LAT-7-707	25.40 x 12.70	131
LAT-7-709	25.40 x 12.70	131
LAT-7-712	25.40 x 12.70	134
LAT-7-722	25.40 x 12.70	131
LAT-7-737	25.40 x 12.70	131
LAT-7-737-YL	25.40 x 12.70	131
LAT-7-747	25.40 x 12.70	131
LAT-7-747-YL	25.40 x 12.70	131
LAT-7-773	25.40 x 12.70	131
LAT-7-799	25.40 x 12.70	131
LAT-8-409	25.40 x 9.53	131
LAT-8-652	25.40 x 9.53	131
LAT-8-707	25.40 x 9.53	134
LAT-8-712	25.40 x 9.53	134
LAT-8-747	25.40 x 9.53	131
LAT-8-747-YL	25.40 x 9.53	131
LAT-8-799	25.40 x 38.10	131
LAT-9-409	38.10 x 6.35	131
LAT-9-652	38.10 x 6.35	131
LAT-9-709	38.10 x 6.35	131
LAT-9-747	38.10 x 6.35	131
LAT-9-747-YL	38.10 x 6.35	131
LAT-9-799	38.10 x 6.35	131
LAT-10-652	47.63 x 6.35	132
LAT-10-747	47.63 x 6.35	132
LAT-11-409	47.63 x 9.53	132
LAT-11-747	47.63 x 9.53	132
LAT-11-747-YL	47.63 x 9.53	132
LAT-12-652	76.20 x 9.53	132
LAT-12-709	76.20 x 9.53	132
LAT-12-747	76.20 x 9.53	132
LAT-12-747-YL	76.20 x 9.53	132
LAT-13-409	47.63 x 21.16	132
LAT-13-410	47.63 x 21.16	132
LAT-13-707	47.63 x 21.16	132
LAT-13-712	47.63 x 21.16	132
LAT-13-722	47.63 x 21.16	132
LAT-13-747	47.63 x 21.16	132
LAT-13-747-YL	47.63 x 21.16	132
LAT-13-759	47.63 x 21.16	132
LAT-14-747	47.63 x 33.78	132
LAT-15-361	12.70 x 19.05	133
LAT-16-361	25.40 x 19.05	133
LAT-17-361	25.40 x 25.40	133
LAT-18-361	25.40 x 33.78	133
LAT-19-361	25.40 x 80.44	133
LAT-20-773	38.10 x 19.05	131
LAT-21-707	63.50 x 25.40	132
LAT-21-712	63.50 x 25.40	132

Order Reference	Size (mm)	Specifications on Page
LAT-21-747	63.50 x 25.40	132
LAT-21-747-YL	63.50 x 25.40	132
LAT-21-773	63.50 x 25.40	132
LAT-22-361	12.70 x 38.10	133
LAT-23-747	25.40 x 12.70	133
LAT-23-773	25.40 x 12.70	133
LAT-24-747	44.45 x 25.40	133
LAT-24-773	44.45 x 25.40	133
LAT-25-652	12.70 x 11.10	130
LAT-25-709	12.70 x 11.10	130
LAT-25-747	12.70 x 11.10	130
LAT-26-652	6.35 x 6.35	130
LAT-26-747	6.35 x 6.35	130
LAT-27-361	47.63 x 80.44	133
LAT-28-409	215.90 x 279.40	135
LAT-28-722	215.90 x 279.40	135
LAT-28-747	215.90 x 279.40	135
LAT-28-747-YL	215.90 x 279.40	135
LAT-28-773	215.90 x 279.40	135
LAT-29-652	16.51 x 5.08	130
LAT-29-737	16.51 x 5.08	130
LAT-29-747	16.51 x 5.08	130
LAT-29-747-YL	16.51 x 5.08	130
LAT-29-799	15.51 x 5.08	130
LAT-30-737	31.75 x 9.53	131
LAT-30-737-YL	31.75 x 9.53	131
LAT-31-707	50.80 x 22.86	132
LAT-31-747	50.80 x 22.86	132
LAT-31-759	50.80 x 22.86	132
LAT-32-747	76.20 x 22.86	132
LAT-32-759	76.20 x 22.86	132
LAT-33-707	50.80 x 36.50	132
LAT-33-747	50.80 x 36.50	132
LAT-33-759	50.80 x 36.50	132
LAT-34-707	76.20 x 36.50	132
LAT-34-747	76.20 x 36.50	132
LAT-34-759	76.20 x 36.50	132
LAT-35-361	30.48 x 38.10	133
LAT-36-773	40.64 x 9.62	131
LAT-37-799	20.32 x 36.50	131
LAT-38-799	12.70 x 36.50	130
LAT-39-799	25.40 x 36.50	131
LAT-40-799	12.70 x 19.05	130
LAT-41-707	38.10 x 9.53	134
LAT-41-712	38.10 x 9.53	134
LAT-42-707	14.22 x 14.22	130
LAT-42-712	14.22 x 14.22	130
LAT-43-707	73.02 x 9.53	132
LAT-44-707	91.44 x 9.53	132
LAT-45-707	12.70 x 9.53	134
LAT-45-712	12.70 x 9.53	134
LAT-46-707	12.70 x 12.70	134
LAT-46-712	12.70 x 12.70	134
LAT-47-707	38.10 x 12.70	134
LAT-47-712	38.10 x 12.70	134
LAT-175-124	77.77 x 12.70	134
LAT-175-124-BL	77.77 x 12.70	134
LAT-175-124-BR	77.77 x 12.70	134
LAT-175-124-GR	77.77 x 12.70	134
LAT-175-124-GY	77.77 x 12.70	134
LAT-175-124-OR	77.77 x 12.70	134
LAT-175-124-PL	77.77 x 12.70	134
LAT-175-124-RD	77.77 x 12.70	134
LAT-175-124-YL	77.77 x 12.70	134
LAT-176-124	50.17 x 9.53	134
LAT-177-124	200.81 x 12.07	135
LAT-177-124-BL	200.81 x 12.07	135
LAT-177-124-BR	200.81 x 12.07	135
LAT-177-124-GR	200.81 x 12.07	135

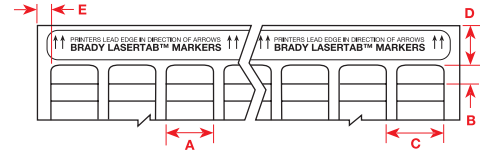
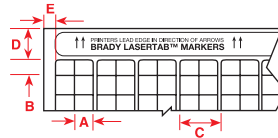
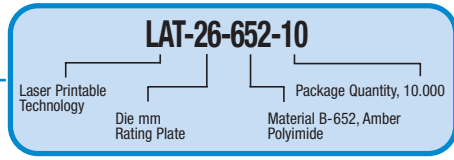
Order Reference	Size (mm)	Specifications on Page
LAT-177-124-GY	200.81 x 12.07	135
LAT-177-124-OR	200.81 x 12.07	135
LAT-177-124-PL	200.81 x 12.07	135
LAT-177-124-RD	200.81 x 12.07	135
LAT-177-124-YL	200.81 x 12.07	135
LAT-178-759	168.28 x 15.86	135
LAT-178-759-BL	168.28 x 15.86	135
LAT-178-759-BR	168.28 x 15.86	135
LAT-178-759-GR	168.28 x 15.86	135
LAT-178-759-GY	168.28 x 15.86	135
LAT-178-759-OR	168.28 x 15.86	135
LAT-178-759-PL	168.28 x 15.86	135
LAT-178-759-RD	168.28 x 15.86	135
LAT-178-759-YL	168.28 x 15.86	135

European LaserTab® Laser Printable Labels A4 Sheet

Order reference	Size (mm)	Specifications on Page
ELAT-3-747W-10	16.00 x 6.00	130
ELAT-4-747W-10	20.00 x 6.00	130
ELAT-4-747YL-10	20.00 x 6.00	130
ELAT-7-722	25.00 x 13.00	131
ELAT-7-747W	25.00 x 13.00	131
ELAT-7-773	25.00 x 13.00	131
ELAT-8-747W	25.00 x 9.00	131
ELAT-9-747W	38.00 x 6.00	131
ELAT-11-747	47.00 x 9.00	132
ELAT-13-722	47.00 x 21.00	132
ELAT-13-747W	47.00 x 21.00	132
ELAT-13-747-YL	47.00 x 21.00	132
ELAT-15-361-5	12.00 x 19.00	133
ELAT-18-361-2.5	25.00 x 33.00	133
ELAT-19-361	25.00 x 80.00	133
ELAT-21-722	63.00 x 25.00	132
ELAT-21-747-YL	63.00 x 25.00	132
ELAT-21-773	63.00 x 25.00	132
ELAT-27-361-1	47.00 x 80.00	133
ELAT-28-722	210.00 x 297.00	135
ELAT-28-747-W	210.00 x 297.00	135
ELAT-28-747-YL	210.00 x 297.00	135
ELAT-28-773	210.00 x 297.00	135
ELAT-31-747W-10	20.00 x 8.00	130
ELAT-31-747YL-10	20.00 x 8.00	130
ELAT-32-747W-10	15.00 x 9.00	130
ELAT-32-747Y-10	15.00 x 9.00	130
ELAT-33-747W-2.5	50.00 x 12.00	132
ELAT-34-747W-1	64.00 x 34.00	132
ELAT-35-773-2.5	27.00 x 27.00	131
ELAT-36-773-10	27.00 x 8.00	131
ELAT-37-773-5	27.00 x 12.50	131
ELAT-38-773-2.5	27.00 x 18.00	131
ELAT-39-747W-10	18.00 x 6.00	130
ELAT-40-747W-10	18.00 x 8.00	130
ELAT-40-747YL-10	18.00 x 8.00	130
ELAT-41-747W-10	12.00 x 12.00	130
ELAT-43-124W	101.60 x 7.00	135
ELAT-44-425	30.00 x 10.00	131
ELAT-45-425	30.00 x 10.00	131

Label Index by Size

Multiple Labels Across



Order Reference Explanation

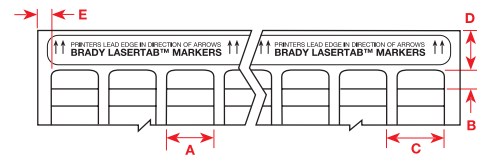
Most BRADY Order Reference for computer printable labels follow the same four-part format: The first code indicates the technology, the second part is a number indicating the die-sized (where applicable), the third part indicates the BRADY material used (where applicable), and the final code indicates package quantity.

Order Reference	Pieces Per Package	Material	Colour	Labels Per Row	Label Width A (mm)	Label Height B (mm)	Horizontal Repeat C (mm)	Top Margin D (mm)	Left Margin E (mm)	Labels Per Sheet
6.35 mm Label Width										
LAT-26-652-10	10 000	Polyimide	Amber	26	6.35	6.35	15.24	22.23	10.16	936
LAT-26-747-10	10 000	Polyester	White	26	6.35	6.35	15.24	22.23	10.16	936
7.62 mm Label Width										
LAT-1-652-10	10 000	Polyimide	Amber	22	7.62	6.35	17.78	22.23	11.43	836
LAT-1-747-10	10 000	Polyester	White	22	7.62	6.35	17.78	22.23	11.43	836
9.53 mm Label Width										
LAT-2-652-10	10 000	Polyimide	Amber	16	9.53	9.53	12.70	22.23	7.95	400
LAT-2-747-10	10 000	Polyester	White	16	9.53	9.53	12.70	22.23	7.95	400
12.00 mm Label Width										
ELAT-41-747W-10	10 000	Polyester	White	13	12.00	12.00	15.00	20.00	9.00	273
12.70 mm Label Width										
LAT-25-652-10	10 000	Polyimide	Amber	13	12.70	11.10	15.24	22.23	10.16	286
LAT-25-709-10	10 000	Removable Polyester	White	13	12.70	11.10	15.24	22.23	10.16	286
LAT-25-747-10	10 000	Polyester	White	13	12.70	11.10	15.24	22.23	10.16	286
LAT-40-799-1/5	1 000/5 000	Nylon Cloth	White	13	12.70	19.05	15.24	22.23	10.16	156
LAT-38-799-1/2.5	1 000/2 500	Nylon Cloth	White	13	12.70	36.50	15.24	22.23	7.62	78
14.22 mm Label Width										
LAT-42-707-10	10 000	Polyester	Clear	17	14.22	14.22	17.78	22.23	11.94	187
LAT-42-712-10	10 000	Polyester	Clear	17	14.22	14.22	17.78	22.23	11.94	187
15.00 mm Label Width										
ELAT-32-747W-10	10 000	Polyester	White	10	15.00	9.00	19.00	20.00	12.00	290
ELAT-32-747Y-10	10 000	Polyester	Yellow	10	15.00	9.00	19.00	20.00	12.00	290
16.00 mm Label Width										
ELAT-3-747W-10	10 000	Polyester	White	9	16.00	6.00	21.00	14.50	13.00	450
16.51 mm Label Width										
LAT-29-652-10	10 000	Polyimide	Amber	10	16.51	5.08	20.32	22.23	8.26	480
LAT-29-737W-10	10 000	Tedlar®	White	10	16.51	5.08	20.32	22.23	8.26	480
LAT-29-747-2.5/10	2 500/10 000	Tedlar	White	10	16.51	5.08	20.32	22.23	8.26	480
LAT-29-747YL-10	10 000	Polyester	Yellow	10	16.51	5.08	20.32	22.23	8.26	480
LAT-29-799-10	10 000	Nylon Cloth	White	10	16.51	5.08	20.32	22.23	8.26	480
LAT-3-410-10	10 000	Polyolefin	White	10	16.51	6.35	20.32	22.23	8.26	380
LAT-3-652-10	10 000	Polyimide	Amber	10	16.51	6.35	20.32	22.23	8.26	380
LAT-3-747-10	10 000	Polyester	White	10	16.51	6.35	20.32	22.23	8.26	380
18.00 mm Label Width										
ELAT-39-747W-10	10 000	Polyester	White	9	18.00	6.00	21.00	14.50	12.00	396
ELAT-40-747W-10	10 000	Polyester	White	9	18.00	8.00	21.00	20.00	12.00	288
ELAT-40-747YL-10	10 000	Polyester	Yellow	9	18.00	8.00	21.00	20.00	12.00	288
20.00 mm Label Width										
ELAT-4-747W-10	10 000	Polyester	White	7	20.00	6.00	25.00	14.50	20.00	315
ELAT-4-747YL-10	10 000	Polyester	Yellow	7	20.00	6.00	25.00	14.50	20.00	315
ELAT-31-747W-10	10 000	Polyester	White	7	20.00	8.00	25.00	20.00	20.00	224
ELAT-31-747YL-10	10 000	Polyester	Yellow	7	20.00	8.00	25.00	20.00	20.00	224
20.32 mm Label Width										
LAT-4-410-10	10 000	Polyolefin	White	8	20.32	6.35	25.40	22.23	8.89	304
LAT-4-652-10	10 000	Polyimide	Amber	8	20.32	6.35	25.40	22.23	8.89	304
LAT-4-737W-10	10 000	Tedlar	White	8	20.32	6.35	25.40	22.23	8.89	304
LAT-4-747-10	10 000	Polyester	White	8	20.32	6.35	25.40	22.23	8.89	304
LAT-4-747YL-10	10 000	Polyester	Yellow	8	20.32	6.35	25.40	22.23	8.89	304
LAT-5-652-10	10 000	Polyimide	Amber	8	20.32	12.70	25.40	22.23	8.89	152
LAT-5-747-10	10 000	Polyester	White	8	20.32	12.70	25.40	22.23	8.89	152
LAT-5-747YL-10	10 000	Polyester	White	8	20.32	12.70	25.40	22.23	8.89	152

Tedlar® is a registered trademark of DuPont.

Note: Labels are sorted by width, height, 3 digit material number (within reference).

Label Index by Size

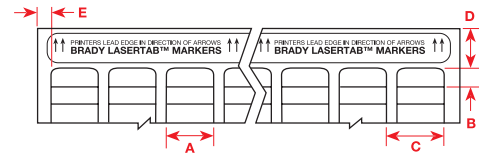


Order Reference	Pieces Per Package	Material	Colour	Labels Per Row	Label Width A (mm)	Label Height B (mm)	Horizontal Repeat C (mm)	Top Margin D (mm)	Left Margin E (mm)	Labels Per Sheet
20.32 mm Label Width (Cont.)										
LAT-5-759-10	10 000	Paper	White	8	20.32	12.70	25.40	22.23	8.89	152
LAT-37-799-1/2.5	1 000/2 500	Nylon Cloth	White	9	20.32	36.50	25.40	22.23	7.62	54
25.00 mm Label Width										
ELAT-8-747W	10 000	Polyester	White	7	25.00	9.00	27.50	14.30	10.00	203
ELAT-7-722	10 000	Polyester	White	7	25.00	13.00	27.50	14.30	10.00	140
ELAT-7-747W	10 000	Polyester	White	7	25.00	13.00	27.50	14.30	10.00	140
ELAT-7-773	10 000	Metallised Polyester	Silver	7	25.00	13.00	27.50	14.30	10.00	140
25.40 mm Label Width										
LAT-6-652-10	10 000	Polyimide	Amber	7	25.40	6.35	27.94	22.23	11.43	266
LAT-6-747-10	10 000	Polyester	White	7	25.40	6.35	27.94	22.23	11.43	266
LAT-8-409-10	10 000	Polyolefin	White	7	25.40	9.53	27.94	22.23	11.43	175
LAT-8-652-10	10 000	Polyimide	Amber	7	25.40	9.53	27.94	22.23	11.43	175
LAT-8-747-10	10 000	Polyester	White	7	25.40	9.53	27.94	22.23	11.43	175
LAT-8-747YL-10	10 000	Polyester	Yellow	7	25.40	9.53	27.94	22.23	11.43	175
LAT-8-799-10	10 000	Nylon Cloth	White	7	25.40	38.10	27.94	22.23	11.43	175
LAT-7-410-10	10 000	Polyolefin	White	7	25.40	12.70	27.94	22.23	11.43	133
LAT-7-652-10	10 000	Polyimide	Amber	7	25.40	12.70	27.94	22.23	11.43	133
LAT-7-707-10	10 000	Polyester	White	7	25.40	12.70	27.94	22.23	11.43	133
LAT-7-709-10	10 000	Removable Polyester	White	7	25.40	12.70	27.94	22.23	11.43	133
LAT-7-722-10	10 000	Polyester	Clear	7	25.40	12.70	27.94	22.23	11.43	133
LAT-7-737-W-10	10 000	Tedlar®	White	7	25.40	12.70	27.94	22.23	11.43	133
LAT-7-737-YL-10	10 000	Tedlar	Yellow	7	25.40	12.70	27.94	22.23	11.43	133
LAT-7-747-10	10 000	Polyester	White	7	25.40	12.70	27.94	22.23	11.43	133
LAT-7-747YL-10	10 000	Polyester	Yellow	7	25.40	12.70	27.94	22.23	11.43	133
LAT-7-773-10	10 000	Metallized Polyester	Silver	7	25.40	12.70	27.94	22.23	11.43	133
LAT-7-799-10	10 000	Nylon Cloth	White	7	25.40	12.70	27.94	22.23	11.43	133
LAT-39-799-1/2.5	1 000/2 500	Nylon Cloth	White	7	25.40	36.50	27.94	22.23	7.62	42
27.00 mm Label Width										
ELAT-36-773-10	10 000	Metallised Polyester	Silver	6	27.00	8.00	31.00	20.00	14.00	192
ELAT-37-773-5	5 000	Metallised Polyester	Silver	6	27.00	12.50	31.00	20.00	14.00	126
ELAT-38-773-2.5	2 500	Metallised Polyester	Silver	6	27.00	18.00	31.00	20.00	14.00	84
ELAT-35-773-2.5	2 500	Metallised Polyester	Silver	6	27.00	27.00	31.00	20.00	14.00	54
30.00 mm Label Width										
ELAT-44-425	750	Polyolefin	White	3	30.00	10.00	64.00	27.00	16.50	30
ELAT-45-425	750	Polyolefin	White	5	30.00	10.00	40.00	24.00	10.00	30
31.75 mm Label Width										
LAT-30-737-W-10	10 000	Tedlar	White	5	31.75	9.53	40.64	22.23	11.43	125
LAT-30-737-YL-10	10 000	Tedlar	Yellow	5	31.75	9.53	40.64	22.23	11.43	125
38.00 mm Label Width										
ELAT-9-747W	10 000	Polyester	White		38.00	6.00	43.00	14.50	21.50	180
38.10 mm Label Width										
LAT-9-409-10	10 000	Polyolefin	White	5	38.10	6.35	40.64	22.23	7.62	190
LAT-9-652-10	10 000	Polyimide	Amber	5	38.10	6.35	40.64	22.23	7.62	190
LAT-9-709-10	10 000	Removable Polyester	White	5	38.10	6.35	40.64	22.23	7.62	190
LAT-9-747-10	10 000	Polyester	White	5	38.10	6.35	40.64	22.23	7.62	190
LAT-9-747YL-10	10 000	Polyester	Yellow	5	38.10	6.35	40.64	22.23	7.62	190
LAT-9-799-10	10 000	Nylon Cloth	White	5	38.10	6.35	40.64	22.23	7.62	190
LAT-20-773-2.5	2 500	Metallised Polyester	Silver	5	38.10	19.05	40.64	22.23	6.35	60
40.64 mm Label Width										
LAT-36-773-1	1 000	Metallised Polyester	Silver	4	40.64	9.53	48.77	22.23	15.75	100

Tedlar® is a registered trademark of DuPont.

Note: Labels are sorted by width, height, 3 digit material number (within reference).

Label Index by Size

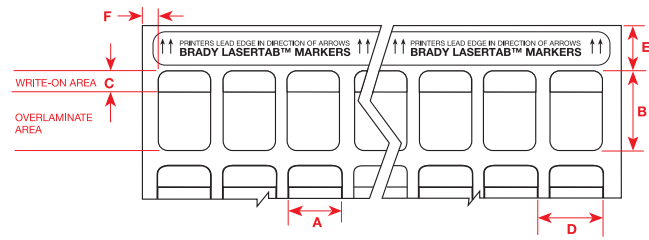


Order Reference	Pieces Per Package	Material	Colour	Labels Per Row	Label Width A (mm)	Label Height B (mm)	Horizontal Repeat C (mm)	Top Margin D (mm)	Left Margin E (mm)	Labels Per Sheet
47.00 mm Label Width										
ELAT-11-747	5 000	Polyester	White	4	47.00	9.00	49.00	14.50	8.00	116
ELAT-13-722	2 500	Polyester	White	4	47.00	21.00	49.00	14.50	8.00	48
ELAT-13-747W	2 500	Polyester	White	4	47.00	21.00	49.00	14.50	8.00	48
ELAT-13-747-YL	2 500	Polyester	White	4	47.00	21.00	49.00	14.50	8.00	48
47.63 mm Label Width										
LAT-10-652-10	10 000	Polyimide	Amber	4	47.63	6.35	50.80	22.23	7.98	156
LAT-10-747-10	10 000	Polyester	White	4	47.63	6.35	50.80	22.23	7.98	156
LAT-11-409-5	5 000	Polyolefin	White	4	47.63	9.53	50.80	22.23	7.87	100
LAT-11-747-5	5 000	Polyester	White	4	47.63	9.53	50.80	22.23	7.87	100
LAT-11-747YL-5	5 000	Polyester	Yellow	4	47.63	9.53	50.80	22.23	7.87	100
LAT-13-409-2.5	2 500	Polyolefin	White	4	47.63	21.16	50.80	21.18	7.87	44
LAT-13-410-2.5	2 500	Polyolefin	White	4	47.63	21.16	50.80	21.18	7.87	44
LAT-13-707-2.5	2 500	Polyester	White	4	47.63	21.16	50.80	21.18	7.87	44
LAT-13-712-2.5	2 500	Polyester	Clear	4	47.63	21.16	50.80	21.18	7.87	44
LAT-13-722-2.5	2 500	Polyester	White	4	47.63	21.16	50.80	21.18	7.87	44
LAT-13-747-2.5	2 500	Polyester	Yellow	4	47.63	21.16	50.80	21.18	7.87	44
LAT-13-747YL-2.5	2 500	Paper	White	4	47.63	21.16	50.80	21.18	7.87	44
LAT-13-759-2.5	2 500	Polyester	Clear	4	47.63	21.16	50.80	21.18	7.87	44
LAT-14-747-1.5	1 500	Polyester	White	4	47.63	33.78	50.80	21.18	8.00	28
50.00 mm Label Width										
ELAT-33-747W-2.5	2 500	Polyester	White	3	50.00	12.00	55.00	20.00	25.00	63
50.80 mm Label Width										
LAT-31-707-1	1 000	Polyester	White	3	50.80	22.86	71.12	22.23	7.62	30
LAT-31-747W-1	1 000	Polyester	White	3	50.80	22.86	71.12	22.23	7.62	30
LAT-31-759-1	1 000	Paper	White	3	50.80	22.86	71.12	22.23	7.62	30
LAT-33-707-1	1 000	Polyester	White	3	50.80	22.86	71.12	22.23	7.62	18
LAT-33-747W-1	1 000	Polyester	White	3	50.80	22.86	71.12	22.23	7.62	18
LAT-33-759-1	1 000	Paper	White	3	50.80	22.86	71.12	22.23	7.62	18
63.00 mm Label Width										
ELAT-21-722	1 000	Polyester	Clear	3	63.00	25.00	65.00	14.50	8.50	30
ELAT-21-747-YL	1 000	Polyester	Yellow	3	63.00	25.00	65.00	14.50	8.50	30
ELAT-21-773	1 000	Metallised Polyester	Silver	3	63.00	25.00	65.00	14.50	8.50	30
63.50 mm Label Width										
LAT-21-707-1	1 000	Polyester	White	3	63.50	25.40	66.04	22.23	7.62	27
LAT-21-712-1	1 000	Polyester	Clear	3	63.50	25.40	66.04	22.23	7.62	27
LAT-21-747W-1	1 000	Polyester	White	3	63.50	25.40	66.04	22.23	7.62	27
LAT-21-747YL-1	1 000	Polyester	Yellow	3	63.50	25.40	66.04	22.23	7.62	27
LAT-21-773-1	1 000	Metallized Polyester	Silver	3	63.50	25.40	66.04	22.23	7.62	27
64.00 mm Label Width										
ELAT-34-747W-1	1 000	Polyester	White	3	64.00	34.00	66.00	20.00	8.00	21
73.02 mm Label Width										
LAT-43-707-2.5	2 500	Polyester	White	2	73.02	9.53	-	22.23	36.83	40
76.20 mm Label Width										
LAT-12-652-2.5	2 500	Polyimide	Amber	2	76.20	9.53	81.28	22.23	29.21	50
LAT-12-709-2.5	2 500	Removable Polyester	White	2	76.20	9.53	81.28	22.23	29.21	50
LAT-12-747-2.5	2 500	Polyester	White	2	76.20	9.53	81.28	22.23	29.21	50
LAT-12-747YL-2.5	2 500	Polyester	Yellow	2	76.20	9.53	81.28	22.23	29.21	50
LAT-32-747W-1	1 000	Polyester	White	2	76.20	22.86	81.28	22.23	29.21	20
LAT-32-759-1	1 000	Paper	White	2	76.20	22.86	81.28	22.23	29.21	20
LAT-34-707-1	1 000	Polyester	White	2	76.20	36.50	81.28	22.23	29.21	12
LAT-34-747W-1	1 000	Polyester	White	2	76.20	36.50	81.28	22.23	29.21	18
LAT-34-759-1	1 000	Paper	White	2	76.20	36.50	81.28	22.23	29.21	18
91.40 mm Label Width										
LAT-44-707-2.5	2 500	Polyester	White	2	91.44	9.53	-	22.23	16.51	40

Note: Labels are sorted by width, height, 3 digit material number (within reference).

Self-laminating Labels by Size

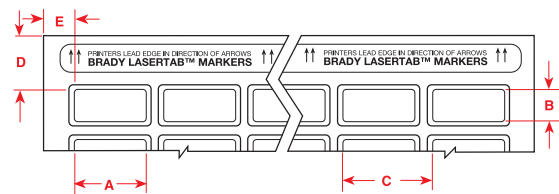
Self-laminating Labels by Size



Order Reference	Pieces Per Package	Material	Colour	Labels Per Row	Label Width A (mm)	Label Height B (mm)	Write-on Height C (mm)	Horizontal Repeat D (mm)	Top Margin E (mm)	Left Margin F (mm)	Labels Per Sheet	Max Cable Diameter (mm)
12.00 mm Label Width												
ELAT-15-361-5	5 000	Self-lamin. Polyester	White/Trans.	13	12.00	19.00	9.00	14.50	20.00	12.00	169	3.00
12.70 mm Label Width												
LAT-15-361-1/5	1 000/5 000	Self-lamin. Polyester	White/Trans.	13	12.70	19.05	9.40	15.24	22.23	10.16	156	3.00
LAT-22-361-5	5 000	Self-lamin. Polyester	White/Trans.	13	12.70	38.10	9.40	15.24	22.23	10.16	78	8.00
25.00 mm Label Width												
ELAT-18-361-2.5	2 500	Self-lamin. Polyester	White/Trans.	7	25.00	33.00	11.00	27.50	14.50	10.00	56	7.00
ELAT-19-361	1 000	Self-lamin. Polyester	White/Trans.	7	25.00	80.00	24.00	27.00	14.50	11.50	21	17.50
25.40 mm Label Width												
LAT-16-361-1/5	1 000/5 000	Self-lamin. Polyester	White/Trans.	7	25.40	19.05	8.64	27.94	22.23	11.43	84	3.00
LAT-17-361-1/2.5	1 000/2 500	Self-lamin. Polyester	White/Trans.	7	25.40	25.40	8.64	27.94	22.23	11.43	63	5.00
LAT-18-361-1/2.5	1 000/2 500	Self-lamin. Polyester	White/Trans.	7	25.40	33.78	12.7	27.94	21.18	11.43	49	6.50
LAT-19-361-1	1 000	Self-lamin. Polyester	White/Trans.	7	25.40	80.44	24.64	27.94	21.18	11.43	21	17.50
30.48 mm Label Width												
LAT-35-361-2.5	2 500	Self-lamin. Polyester	White/Trans.	6	30.48	38.10	12.70	32.23	22.23	10.16	36	8.00
47.00 mm Label Width												
ELAT-27-361-1	1 000	Self-lamin. Polyester	White/Trans.	4	47.00	80.00	25.00	49.00	20.00	8.00	12	17.50
47.63 mm Label Width												
LAT-27-361-1	1 000	Self-lamin. Polyester	White/Trans.	4	47.63	80.44	24.59	50.80	22.23	5.46	12	17.50

Note: Labels are sorted by width, height, 3 digit material number (within reference).

PermaShield™ Markers by Size

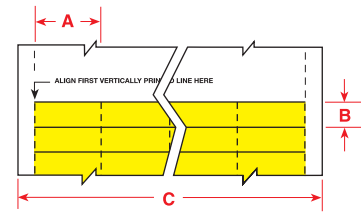


Order Reference	Pieces Per Package	Material	Colour	Labels Per Row	Label Width A (mm)	Label Height B (mm)	Horizontal Repeat C (mm)	Top Margin D (mm)	Left Margin E (mm)	Labels Per Sheet
25.40 mm Label Width										
LAT-23-747-2.5	2 500	Polyester	White	6	25.40	12.70	34.29	25.40	6.99	60
LAT-23-773-2.5	2 500	Metallised Polyester	Silver	6	25.40	12.70	34.29	25.40	6.99	60
44.45 mm Label Width										
LAT-24-747-1	1 000	Polyester	White	3	44.45	25.40	55.88	25.40	29.85	21
LAT-24-773-1	1 000	Metallised Polyester	Silver	3	44.45	25.40	55.88	25.40	29.85	21

Note: Labels are sorted by width, height, 3 digit material number (within reference).

Faceplate Inserts by Size

Faceplate Inserts by Size

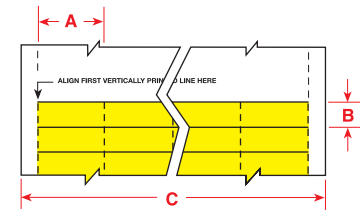


Order Reference	Pieces Per Package	Material	Colour	Strips Per Row	Strip Width A (mm)	Strip Height B (mm)	Web Width C (mm)	Labels Per Sheet
9.53 mm Label Width								
LAT-41-707-10	10 000	Polyester	White	5	12.70	38.10	215.90	125
LAT-41-712-10	10 000	Polyester	Clear	5	9.53	38.10	215.90	125
12.70 mm Label Width								
LAT-45-707-10	10 000	Polyester	White	13	12.70	9.53	215.90	325
LAT-45-712-10	10 000	Polyester	Clear	13	12.70	9.53	215.90	325
LAT-46-707-10	10 000	Polyester	White	13	12.70	12.70	215.90	325
LAT-46-712-10	10 000	Polyester	Clear	13	12.70	12.70	215.90	325
25.40 mm Label Width								
LAT-8-707-10	10 000	Polyester	White	7	25.40	9.53	215.90	175
LAT-8-712-10	10 000	Polyester	Clear	7	25.40	9.53	215.90	175
LAT-7-712-10	10 000	Polyester	Clear	7	25.40	12.70	215.90	175
38.10 mm Label Width								
LAT-47-707-10	10 000	Polyester	White	5	38.10	12.70	215.90	100
LAT-47-712-10	10 000	Polyester	Clear	5	38.10	12.70	215.90	100
50.17 mm Label Width								
LAT-176-124-WT	1 000	Paper	White	4	50.17	9.53	215.90	104
77.77 mm Label Width								
LAT-175-124-BL	380	Paper	Blue	2	77.77	12.70	215.90	38
LAT-175-124-BR	380	Paper	Brown	2	77.77	12.70	215.90	38
LAT-175-124-GR	380	Paper	Green	2	77.77	12.70	215.90	38
LAT-175-124-GY	380	Paper	Grey	2	77.77	12.70	215.90	38
LAT-175-124-OR	380	Paper	Orange	2	77.77	12.70	215.90	38
LAT-175-124-PL	380	Paper	Purple	2	77.77	12.70	215.90	38
LAT-175-124-RD	380	Paper	Red	2	77.77	12.70	215.90	38
LAT-175-124-WT	380	Paper	White	2	77.77	12.70	215.90	38
LAT-175-124-YL	380	Paper	Yellow	2	77.77	12.70	215.90	38

Note: Labels are sorted by width, height, 3 digit material number (within reference).

110 Block Markers by Size

110 Block Markers by Size and Patch Panel Inserts



Order Reference	Pieces Per Package	Material	Colour	Strips Per Row	Strip Width A (mm)	Strip Height B (mm)	Web Width C (mm)	Labels Per Sheet
101.00 mm Label Width								
ELAT-43-124W	380	Paper	White	1	101.00	7.00	210.00	380
168.28 mm Label Width								
LAT-178-759-BL	150	Paper	Blue	1	168.28	15.88	215.90	15
LAT-178-759-BR	150	Paper	Brown	1	168.28	15.88	215.90	15
LAT-178-759-GR	150	Paper	Green	1	168.28	15.88	215.90	15
LAT-178-759-GY	150	Paper	Grey	1	168.28	15.88	215.90	15
LAT-178-759-OR	150	Paper	Orange	1	168.28	15.88	215.90	15
LAT-178-759-PL	150	Paper	Purple	1	168.28	15.88	215.90	15
LAT-178-759-RD	150	Paper	Red	1	168.28	15.88	215.90	15
LAT-178-759-WT	150	Paper	White	1	168.28	15.88	215.90	15
LAT-178-759-YL	150	Paper	Yellow	1	168.28	15.88	215.90	15
200.81 mm Label Width								
LAT-177-124-BL	180	Paper	Blue	1	200.66	12.07	215.90	18
LAT-177-124-BR	180	Paper	Brown	1	200.66	12.07	215.90	18
LAT-177-124-GR	180	Paper	Green	1	200.66	12.07	215.90	18
LAT-177-124-GY	180	Paper	Grey	1	200.66	12.07	215.90	18
LAT-177-124-OR	180	Paper	Orange	1	200.66	12.07	215.90	18
LAT-177-124-PL	180	Paper	Purple	1	200.66	12.07	215.90	18
LAT-177-124-RD	180	Paper	Red	1	200.66	12.07	215.90	18
LAT-177-124-WT	180	Paper	White	1	200.66	12.07	215.90	18
LAT-177-124-YL	180	Paper	Yellow	1	200.66	12.07	215.90	18

Note: Labels are sorted by width, height, 3 digit material number (within reference).

Non Die-Cut Sheets by Size

Order Reference	Sheets Per Package	Material	Colour	Label Width A (mm)	Label Height B (mm)	Labels Per Sheet
210.00 mm Label Width						
ELAT-28-722	25 sheets	Polyester	Clear	210.00	297.00	1
ELAT-28-747-W	25 sheets	Polyester	White	210.00	297.00	1
ELAT-28-747-YL	25 sheets	Polyester	Yellow	210.00	297.00	1
ELAT-28-773	25 sheets	Metallised Polyester	Silver	210.00	297.00	1
215.90 mm Label Width						
LAT-28-409-25SH	25 sheets	Polyolefin	White	215.90	279.40	1
LAT-28-722-25SH	25 sheets	Polyester	Clear	215.90	279.40	1
LAT-28-747-25SH	25 sheets	Polyester	White	215.90	279.40	1
LAT-28-747Y-25SH	25 sheets	Polyester	Yellow	215.90	279.40	1
LAT-28-773-25SH	25 sheets	Metallised Polyester	Silver	215.90	279.40	1

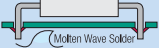
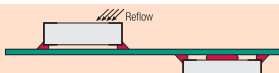
Note: Labels are sorted by width, height, 3 digit material number (within reference).

Circuit Board and Component Identification



Brady label materials are specially engineered to resist the harsh environments associated with the processing of printed circuit boards.


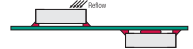
Laser Printable Products Circuit Board Process Chart

	 Through Hole Technology Top Bottom		 Surface Mount Technology (SMT) Top or Bottom	After Process
B-652	● Yes	● Yes	● Yes	● Yes
B-409, B-709, B-747, B-773, B-799	▲ Yes*	✗ No	✗ No	● Yes

* In extreme high temperatures, testing of these materials is recommended.

Polyimides

High-Temperature Amber Polyimide Film (B-652)

Order Reference	Size (mm)	Specifications on Page	 Through Hole Technology Top / Bottom	 SMT Top / Bottom	After Process
LAT-2-652	9.53 x 9.53	130	●	●	●
LAT-3-652	16.51 x 6.35	130	●	●	●
LAT-4-652	20.32 x 6.35	130	●	●	●
LAT-5-652	20.32 x 12.70	130	●	●	●
LAT-6-652	25.40 x 6.35	131	●	●	●
LAT-7-652	25.40 x 12.70	131	●	●	●
LAT-8-652	25.40 x 9.53	131	●	●	●
LAT-9-652	38.10 x 6.35	131	●	●	●
LAT-10-652	47.63 x 6.35	132	●	●	●
LAT-12-652	76.20 x 9.53	132	●	●	●
LAT-25-652	12.70 x 11.10	130	●	●	●
LAT-26-652	6.35 x 6.35	130	●	●	●
LAT-29-652	16.51 x 5.08	130	●	●	●

- Yes, this material will work with this application.
- ✗ No, this material does not work with this application.
- ▲ In extreme high temperatures, testing of these materials is recommended.

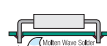
Circuit Board and Component Identification



Brady laser printable polyester labels are ideal for small volume production runs.

Polyester

**Removable White Polyester (B-709),
Permanent White or Yellow Polyester (B-747)**



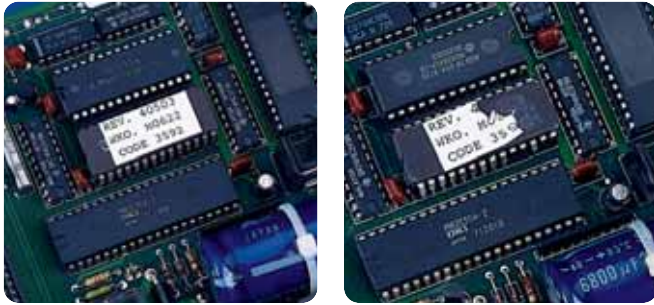
Order Reference	Size (mm)	Specifications on Page	Through Hole Technology		SMT Top / Bottom	After Process
			Top	Bottom		
LAT-1-747	7.62 x 6.35	130	▲	×	×	●
LAT-2-747	9.53 x 9.53	130	▲	×	×	●
LAT-3-747	16.51 x 6.35	130	▲	×	×	●
ELAT-3-747W	16.00 x 6.00	130	▲	×	×	●
LAT-4-747	20.32 x 6.35	130	▲	×	×	●
LAT-4-747-YL	20.32 x 6.35	130	▲	×	×	●
ELAT-4-747W	20.00 x 6.00	130	▲	×	×	●
ELAT-4-747YL	20.00 x 6.00	130	▲	×	×	●
LAT-5-747	20.32 x 12.70	130	▲	×	×	●
LAT-5-747-YL	20.32 x 12.70	130	▲	×	×	●
LAT-6-747	25.40 x 6.35	131	▲	×	×	●
LAT-7-709	25.40 x 12.70	131	▲	×	×	●
LAT-7-747	25.40 x 12.70	131	▲	×	×	●
LAT-7-747-YL	25.40 x 12.70	131	▲	×	×	●
ELAT-7-747W	25.00 x 13.00	131	▲	×	×	●
LAT-8-747	25.40 x 9.53	131	▲	×	×	●
LAT-8-747-YL	25.40 x 9.53	131	▲	×	×	●
ELAT-8-747W	25.00 x 9.00	131	▲	×	×	●
LAT-9-709	38.10 x 6.35	131	▲	×	×	●
LAT-9-747	38.10 x 6.35	131	▲	×	×	●
LAT-9-747-YL	38.10 x 6.35	131	▲	×	×	●
ELAT-9-747W	38.00 x 6.00	131	▲	×	×	●
LAT-10-747	47.63 x 6.35	132	▲	×	×	●
LAT-11-747	47.63 x 9.53	132	▲	×	×	●
LAT-11-747-YL	47.63 x 9.53	132	▲	×	×	●
ELAT-11-747W	47.00 x 9.00	132	▲	×	×	●
LAT-12-709	76.20 x 9.53	132	▲	×	×	●
LAT-12-747	76.20 x 9.53	132	▲	×	×	●
LAT-12-747-YL	76.20 x 9.53	132	▲	×	×	●
LAT-25-709	12.70 x 11.10	130	▲	×	×	●
LAT-25-747	12.70 x 11.10	130	▲	×	×	●
LAT-26-747	6.35 x 6.35	130	▲	×	×	●
LAT-29-747	16.51 x 5.08	130	▲	×	×	●
LAT-29-747-YL	16.51 x 5.08	130	▲	×	×	●
ELAT-31-747W	20.00 x 8.00	130	▲	×	×	●
ELAT-31-747YL	20.00 x 8.00	130	▲	×	×	●
ELAT-32-747W	15.00 x 9.00	130	▲	×	×	●
ELAT-32-747YL	15.00 x 9.00	130	▲	×	×	●
ELAT-39-747W	18.00 x 6.00	130	▲	×	×	●
ELAT-40-747W	18.00 x 8.00	130	▲	×	×	●
ELAT-40-747YL	18.00 x 8.00	130	▲	×	×	●

● Yes, this material will work with this application.

× No, this material does not work with this application.

▲ In extreme high temperatures, testing of these materials is recommended.

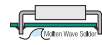
Circuit Board and Component Identification



Tamper-evident polyolefin (B-410) irreversibly stretches and fractures upon removal.

Metallised Polyester

Metallised Polyester (B-773)



Order Reference	Size (mm)	Specifications on Page	Through Hole Technology		SMT Top / Bottom	After Process
			Top	Bottom		
LAT-7-773	25.40 x 12.70	131	▲	✘	✘	●
ELAT-7-773	25.00 x 13.00	131	▲	✘	✘	●
LAT-36-773	40.64 x 9.26	131	▲	✘	✘	●
ELAT-36-773	27.00 x 8.00	131	▲	✘	✘	●

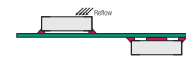
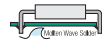
Miscellaneous Materials

Abrasion-Resistant White Polyolefin Film (B-409)

Tamper-Evident White Polyolefin (B-410)

Flame-Retardant White or Yellow Tedlar® Film (B-737)

Permanent White Nylon Cloth (B-799)



Order Reference	Size (mm)	Specifications on Page	Through Hole Technology		SMT Top / Bottom	After Process
			Top	Bottom		
LAT-3-410	16.51 x 6.35	130	▲	✘	✘	●
LAT-4-410	20.32 x 6.35	130	▲	✘	✘	●
LAT-4-737	20.32 x 6.35	130	▲	✘	✘	●
LAT-7-410	25.40 x 12.70	131	▲	✘	✘	●
LAT-7-799	25.40 x 12.70	131	▲	✘	✘	●
LAT-8-409	25.40 x 9.53	131	▲	✘	✘	●
LAT-8-799	25.40 x 38.10	131	▲	✘	✘	●
LAT-9-409	38.10 x 6.35	131	▲	✘	✘	●
LAT-9-799	38.10 x 6.35	131	▲	✘	✘	●
LAT-11-409	47.63 x 9.53	132	▲	✘	✘	●
LAT-29-799	15.51 x 5.08	130	▲	✘	✘	●

Tedlar® is a registered trademark of DuPont.

- Yes, this material will work with this application.
- ✘ No, this material does not work with this application.
- ▲ In extreme high temperatures, testing of these materials is recommended.

Wire and Cable Marking

Nylon Cloth (B-799), Self-Laminating Polyester (B-361), Flame-Retardant White or Yellow Tedlar® Film (B-737)

Order Reference	Size (mm)	Specifications on Page
LAT-7-737	25.40 x 12.70	131
LAT-7-737-YL	25.40 x 12.70	131
LAT-15-361	12.70 x 19.05	133
ELAT-15-361	12.00 x 19.00	133
LAT-16-361	25.40 x 19.05	131
LAT-17-361	25.40 x 25.40	131
LAT-18-361	25.40 x 33.78	131
ELAT-18-361	25.00 x 33.00	133
LAT-19-361	25.40 x 80.44	133
ELAT-19-361	25.00 x 80.00	133
LAT-22-361	12.70 x 38.10	133
LAT-27-361	47.63 x 80.44	133
ELAT-27-361	47.00 x 80.00	133
LAT-29-737	16.51 x 5.08	130
LAT-30-737	31.75 x 9.53	131
LAT-30-737-YL	31.75 x 9.53	131
LAT-35-361	30.48 x 38.10	131
LAT-37-799	20.32 x 36.50	131
LAT-38-799	12.70 x 36.50	130
LAT-39-799	25.40 x 36.50	131
LAT-40-799	12.70 x 19.05	130



LaserTab® markers adhere to ribbon cables without peeling when cables are flexed. Images remain clean and crisp, even after repeated handling.

Data Communications Equipment and Cabling Labels

Voice and Data Cabling Labels

Order Reference	Application	Size (mm)	Specifications on Page
LAT-17-361	2-pair Fibre	25.40 x 25.40	133
LAT-18-361	Cat-5 4 Pair Copper UTP	25.40 x 33.78	133
ELAT-18-361	Cat-5 4 Pair Copper UTP	25.00 x 33.00	133
LAT-19-361	25 Pair Copper	25.40 x 80.44	133
ELAT-19-361	25 Pair Copper	25.00 x 80.00	133



Brady cable labels have a proprietary adhesive that helps them stay attached.

Workstation Labels

Order Reference	Application	Size (mm)	Specifications on Page
LAT-7-707	White for 1-2 Outlet Faceplates	25.40 x 12.70	131
LAT-7-712	Clear for 1-2 Outlet Faceplates	25.40 x 12.70	134
LAT-8-707	White for 1-2 Outlet Faceplates	25.40 x 9.53	134
LAT-8-712	Clear for 1-2 Outlet Faceplates	25.40 x 9.53	134
LAT-41-707	White for 1-2 Outlet Faceplates	9.53 x 38.10	134
LAT-41-712	Clear for 1-2 Outlet Faceplates	9.53 x 38.10	134
LAT-45-707	White for 1-6 Outlet Faceplates	12.70 x 9.53	134
LAT-45-712	Clear for 1-6 Outlet Faceplates	12.70 x 9.53	134
LAT-46-707	White for 1-6 Outlet Faceplates	12.70 x 12.70	134
LAT-46-712	Clear for 1-6 Outlet Faceplates	12.70 x 12.70	134
LAT-47-707	Clear for 1-2 Outlet Faceplates	38.10 x 12.70	134
LAT-47-712	White for 1-2 Outlet Faceplates	38.10 x 12.70	134
LAT-176-124	Faceplate Desi-Strip Insert	50.17 x 9.53	134



Brady LAT-176-124 is pre-cut for desi-strip inserts in faceplates.

Faceplate Identification

Order Reference	Size (mm)	Specifications on Page
LAT-176-124	50.17 x 9.53	134

Data Communications Equipment and Cabling Labels



LAT-43-707 and LAT-44-707 are designed for patch panel identification.



Brady's LabelMark™ software program includes LAT-177 labels preloaded with 3 pair, 4 pair, and 5 pair numbering schemes for identifying 110 terminal blocks.

Patch Panel and 110 Block Identification

Order Reference	Colour	Applications	Label Size (mm)	Specifications on Page
LAT-43-707	White	Patch Panel - 4 Port	73.02 x 9.525	132
ELAT-43-124	White	KRONE Patch Panel	101.00 x 7.00	135
LAT-44-707	White	Patch Panel - 6 Port	94.44 x 9.525	132
LAT-46-707	White	Patch Panel - Label Each Port	14.20 x 14.20	134
LAT-175-124-BL	Blue	Patch Panel Inserts	77.77 x 12.07	134
LAT-175-124-BR	Brown	Patch Panel Inserts	77.77 x 12.07	134
LAT-175-124-GR	Green	Patch Panel Inserts	77.77 x 12.07	134
LAT-175-124-GY	Gray	Patch Panel Inserts	77.77 x 12.07	134
LAT-175-124-OR	Orange	Patch Panel Inserts	77.77 x 12.07	134
LAT-175-124-PL	Purple	Patch Panel Inserts	77.77 x 12.07	134
LAT-175-124-RD	Red	Patch Panel Inserts	77.77 x 12.07	134
LAT-175-124-WT	White	Patch Panel Inserts	77.77 x 12.07	134
LAT-175-124-YL	Yellow	Patch Panel Inserts	77.77 x 12.07	134
LAT-177-124-BL	Blue	110 Blocks	200.66 x 12.07	135
LAT-177-124-BR	Brown	110 Blocks	200.66 x 12.07	135
LAT-177-124-GR	Green	110 Blocks	200.66 x 12.07	135
LAT-177-124-GY	Gray	110 Blocks	200.66 x 12.07	135
LAT-177-124-OR	Orange	110 Blocks	200.66 x 12.07	135
LAT-177-124-PL	Purple	110 Blocks	200.66 x 12.07	135
LAT-177-124-RD	Red	110 Blocks	200.66 x 12.07	135
LAT-177-124-WT	White	110 Blocks	200.66 x 12.07	135
LAT-177-124-YL	Yellow	110 Blocks	200.66 x 12.07	135
LAT-178-759-BL	Blue	Bix Blocks	168.28 x 15.88	135
LAT-178-759-BR	Brown	Bix Blocks	168.28 x 15.88	135
LAT-178-759-GR	Green	Bix Blocks	168.28 x 15.88	135
LAT-178-759-GY	Gray	Bix Blocks	168.28 x 15.88	135
LAT-178-759-OR	Orange	Bix Blocks	168.28 x 15.88	135
LAT-178-759-PL	Purple	Bix Blocks	168.28 x 15.88	135
LAT-178-759-RD	Red	Bix Blocks	168.28 x 15.88	135
LAT-178-759-WT	White	Bix Blocks	168.28 x 15.88	135
LAT-178-759-YL	Yellow	Bix Blocks	168.28 x 15.88	135

General Communication Identification

Order Reference	Application	Size (mm)	Specifications on Page
LAT-13-747	Grounding, Splices, Pathway and General Identification in a cabinet	47.63 x 21.16	132
ELAT-13-747W	Grounding, Splices, Pathway and General Identification in a cabinet	47.00 x 21.00	132
ELAT-13-747YL	Grounding, Splices, Pathway and General Identification in a cabinet	47.00 x 21.00	132
LAT-14-747	Grounding, Splices, Pathway and General Identification in a cabinet	47.63 x 21.16	132
LAT-14-747-YL	Grounding, Splices, Pathway and General Identification in a cabinet	47.63 x 21.16	132
LAT-24-747	Grounding, Splices, Pathway and General Identification in a cabinet	44.45 x 25.40	133
LAT-24-773	Grounding, Splices, Pathway and General Identification in a cabinet	44.45 x 25.40	133

General Identification Labels

Rating Plates and Asset Identification

Rough Surface White Polyester (B-707)

Removable White Polyester (B-709)

Rough Surface Translucent Polyester (B-712)

Permanent White or Yellow Polyester (B-747)

General Purpose Paper (B-759)

Order Reference	Size (mm)	Specifications on Page
LAT-5-759	20.32 x 12.70	131
LAT-7-707	25.40 x 12.70	131
LAT-7-709	25.40 x 12.70	131
LAT-7-712	25.40 x 12.70	134
LAT-7-747	25.40 x 12.70	131
LAT-7-747-YL	25.40 x 12.70	131
ELAT-7-747W	25.00 x 13.00	131
LAT-8-707	25.40 x 9.53	134
LAT-8-712	25.40 x 9.53	134
ELAT-8-747W	25.00 x 9.00	131
LAT-13-707	47.63 x 21.16	132
LAT-13-747	47.63 x 21.16	132
LAT-13-747-YL	47.63 x 21.16	132
LAT-13-759	47.63 x 21.16	132
ELAT-13-747W	25.00 x 9.00	132
ELAT-13-747YL	25.00 x 9.00	132
LAT-14-747	47.63 x 33.78	132
LAT-21-707	63.50 x 25.40	132
LAT-21-747	63.50 x 25.40	132
LAT-21-747-YL	63.50 x 25.40	132
LAT-31-707	50.80 x 22.86	132
LAT-31-747	50.80 x 22.86	132
LAT-31-759	50.80 x 22.86	132
LAT-32-747	76.20 x 22.86	132
LAT-32-759	76.20 x 22.86	132
LAT-33-707	50.80 x 36.50	132
LAT-33-747	50.80 x 36.50	132
LAT-33-759	50.80 x 36.50	132
ELAT-33-747W	50.00 x 12.00	132
LAT-34-707	76.20 x 36.50	132
LAT-34-747	76.20 x 36.50	132
LAT-34-759	76.20 x 36.50	132
ELAT-34-747W	64.00 x 34.00	132
LAT-41-707	38.10 x 9.53	134
LAT-42-707	14.22 x 14.22	130
LAT-43-707	73.02 x 9.53	132
LAT-44-707	91.44 x 9.53	132
LAT-45-707	12.70 x 9.53	134
LAT-45-712	12.70 x 9.53	134
LAT-46-707	12.70 x 12.70	134
LAT-46-712	12.70 x 12.70	134
LAT-47-707	38.10 x 12.70	134
LAT-47-712	38.10 x 12.70	134



Brady's polyester materials, B-747 and B-773, are perfect for on-demand printing of rating plates. They eliminate the hassle of purchasing pre-printed labels, and permit better control of labeling design and cost.



Abrasion-Resistant White Polyolefin (B-409)

Tamper-Evident White Polyolefin (B-410)

Order Reference	Size (mm)	Specifications on Page
LAT-7-410	25.40 x 12.70	131
LAT-13-409	47.63 x 21.16	132
LAT-13-410	47.63 x 21.16	132

General Identification Labels

Rating Plates and Asset Identification

Rough Surface Translucent Polyester (B-712) Translucent Polyester (B-722)

Order Reference	Size (mm)	Specifications on Page
LAT-7-722	25.40 x 12.70	131
ELAT-7-722	25.00 x 13.00	131
LAT-13-712	47.63 x 21.16	132
LAT-13-722	47.63 x 21.16	132
ELAT-13-722	47.00 x 21.00	132
LAT-21-712	63.50 x 25.40	132
ELAT-21-722	63.00 x 25.00	132
LAT-41-712	38.10 x 9.525	134
LAT-42-712	14.22 x 14.22	130

Permanent Metallised Polyester (B-773)

Order Reference	Size (mm)	Specifications on Page
LAT-7-773	25.40 x 12.70	131
ELAT-7-773	25.00 x 13.00	131
LAT-20-773	38.10 x 19.05	131
LAT-21-773	63.50 x 25.40	132
ELAT-21-773	63.00 x 25.00	132
ELAT-35-773	27.00 x 27.00	131
ELAT-36-773	27.00 x 8.00	131
ELAT-37-773	27.00 x 12.50	131
ELAT-38-773	27.00 x 18.00	131

PermaShield™ Labels

White Polyester (B-747) with Clear Polyester Overlamine (B-966) Metallised Polyester (B-773) with Clear Polyester Overlamine (B-966)

Order Reference	Size (mm)	Specifications on Page
LAT-23-747	25.40 x 12.70	133
LAT-23-773	25.40 x 12.70	133
LAT-24-747	44.45 x 25.40	133
LAT-24-773	44.45 x 25.40	133

Sheet Labels for Prototyping

Abrasion-Resistant White Polyolefin Film (B-409) Translucent Polyester (B-722) Permanent White or Yellow Polyester (B-747) Permanent Metallised Polyester (B-773)

Order Reference	Size (mm)	Specifications on Page
LAT-28-409-25-SH	215.90 x 279.40	135
LAT-28-722-25-SH	215.90 x 279.40	135
ELAT-28-722	210.00 x 297.00	135
LAT-28-747-25-SH	215.90 x 279.40	135
LAT-28-747Y-25-SH	215.90 x 279.40	135
LAT-28-773-25-SH	215.90 x 279.40	135
ELAT-28-747W	210.00 x 297.00	135
ELAT-28-747YL	210.00 x 297.00	135
ELAT-28-773	210.00 x 297.00	135



Brady's durable PermaShield™ labels are protected by a clear overlamine film, so they remain clear and easy-to-read, even in harsh environments.

LASER LABELS



Available in 210.00 x 297.00 sheets for prototyping labels when you wish to cut your own sizes.

Notes

X-ON Electronics

Largest Supplier of Electrical and Electronic Components

Click to view similar products for [Wire Identification](#) category:

Click to view products by [Brady](#) manufacturer:

Other Similar products are found below :

[CU6337-000](#) [CU6342-000](#) [FCA-410-12](#) [11631010](#) [1-1768037-1](#) [1-1768037-2](#) [1-1768050-0](#) [PXLK-VI](#) [Q62184-1](#) [A64304-000](#) [QMT221](#)
[HK032WE1NF038B](#) [1330-0519-10](#) [1395199-1](#) [1395200-1](#) [1395202-1](#) [DMVF050WE-300S6](#) [D-SCE-1K-2.4-50-4-CS7834](#) [1538738-1](#)
[E90935-000](#) [EC1238-000](#) [EC1465-000](#) [EC1855-000](#) [EC1859-000](#) [EC1863-000](#) [EC5415-000](#) [EC7277-000](#) [EC7352-000](#) [EC7603-000](#)
[EC7707-000](#) [EC7735-000](#) [EC7768-000](#) [EC7828-000](#) [EC7854-000](#) [EC7952-000](#) [EC8128-000](#) [1768037-8](#) [1768041-7](#) [NC-127191-10-9](#)
[HS048WE2NF038B](#) [C03232-000](#) [HTCM-SCE-14-4H-9](#) [HTMS-3/16-9](#) [HT-SCE-1/4-2.0-4](#) [HT-SCE-3/16-2.0-4](#) [HTTMS-1/2-1.50-9](#) [HTTMS-](#)
[CM-1/2-4H-9](#) [HX-SCE-19.0-50-9](#) [HX-SCE-6.4-50-4](#) [C25254-000](#)