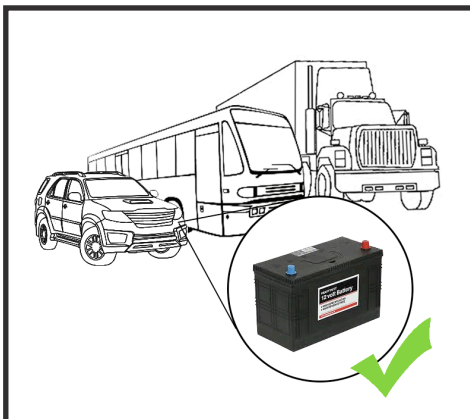
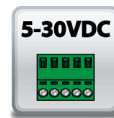
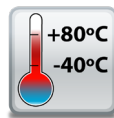


SW-514

COMPACT INDUSTRIAL 4 PORT GIGABIT ETHERNET SWITCH

- 4 Gigabit Ethernet ports
- Wide voltage input range: +5V to +30V DC - can be powered by a variety of sources
- Industrial temperature range: -40°C to +80°C/-40°F to +176°F - works in extreme conditions
- Redundant dual power inputs - reduces risk of power outage
- Jumbo Frame support upto 9K frames
- Integral DIN mount



+5 to +30 Volt power input enables the device to be run from a standard car battery - ideal for in vehicle applications



Non conducting polyamide casing with removable numbered power terminal for easy wiring



Integral DIN mount and slim design takes up minimal cabinet space

SW-514 COMPACT INDUSTRIAL 4 PORT GIGABIT ETHERNET SWITCH

Jumbo Frame support up to 9K frames

All Ethernet ports are Auto MDI/MDIX supporting straight through or crossover Ethernet cables

Integral DIN mount with ground

Automatic detection of data transmission speed: 10 or 100 or 1000 Mbps



-40°C to +80°C/-40°F to +176°F temperature range

Non-conducting polyamide case

Compact case - all round small profile

Power consumption is optimised based on the status of the link device

Dual redundant power input: +5VDC to +30VDC

Easy Wire Removable screw terminal block

Connectors

Screw Terminals	3.5mm pitch, #22 - #14, 0.5mm ² -2.5mm ² pin power supply
Wire Thickness	0.150 inch, 3.81mm, 20 pins, 12+8 screw terminals, #26 - #16 AWG, 0.14mm ² -1.3mm ²

Power Supply

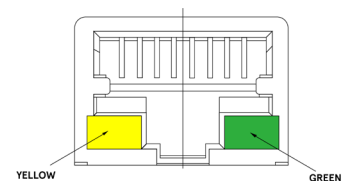
Power Consumption	3.6W Max: 550mA@+5VDC/90mA@+30VDC
Power Supply input	Unregulated +5V to +30Volts DC, reverse polarity protection
Isolation	1500VRMS Magnetic isolation from Ethernet

Environmental

Operating Temperature	-40°C to +80°C/-40°F to +176°F
Storage Temperature	-40°C to +80°C/-40°F to +176°F
Ambient Relative Humidity	5 to 95% (non-condensing)

Magjack LED Information

Link/Activity	Solid	Connection established
	Flashing	Data communication
Speed	Yellow	1000Mbps
	Green	100Mbps

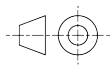
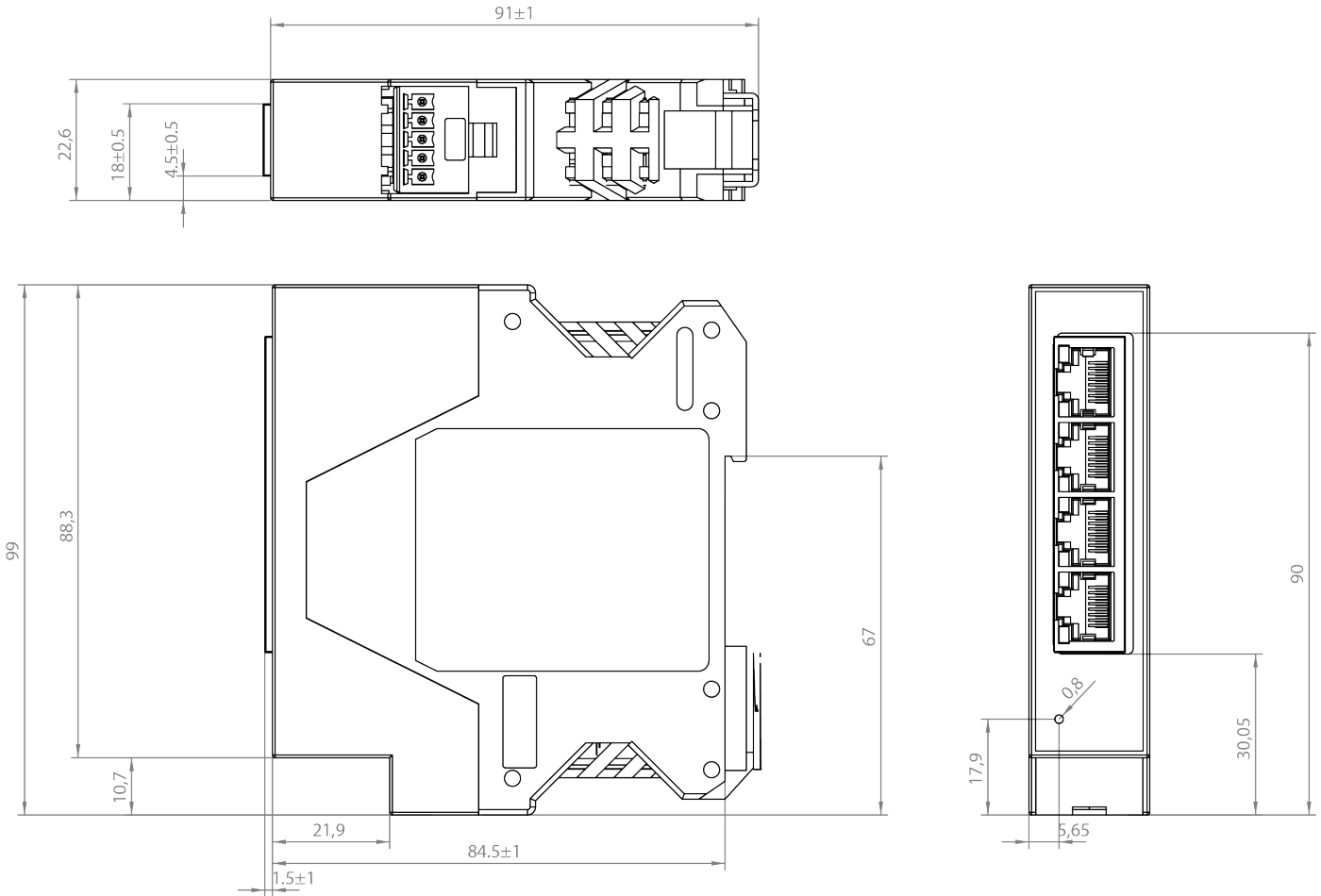


Ethernet

Ethernet Port	4 x RJ45 jack, 10/100/1000Mbps autosensing, crossover auto sensing (Auto MDIX)
Protection	1,500 Volts magnetic isolation between ports
Housing	IP-20 rated non-conducting polyamide case

SW-514

COMPACT INDUSTRIAL 4 PORT GIGABIT ETHERNET SWITCH



All measurements in mm & ±0.1mm unless otherwise indicated

Power Terminal Pin Outs

PIN	FUNCTION
1	-V
2	+VA
3	+VB
4	-V
5	Functional Earth

Ethernet Ports x4 Pin Outs

PIN	FUNCTION
1	TxRxA+
2	TxRxA-
3	TxRxB+
4	TxRxC+
5	TxRxC-
6	TxRxB-
7	TxRxD+
8	TxRxD-

Lifetime Warranty and Support:

We can help with every aspect of your project, from getting you up and running to custom application.

SW-514

COMPACT INDUSTRIAL 4 PORT GIGABIT ETHERNET SWITCH

Packaging Information

Packaging	Quick Start Guide
Device	Ethernet Switch 4 port
Packaged Weight	0.19 kg, 5.64 ounces
Packaged Dims	160x135x49 mm, 6.3x5.3x1.9 inches
GTIN Universal Code	837324004854

Approvals

Industry Approvals	Microsoft Certified Gold Partner, WEEE, RoHS, AEO (C-TPAT), CE, UKCA, METL Complies with UL62368-1
--------------------	--

Product Support

Warranty	Lifetime - online registration required
Support	Lifetime web, email and phone support from fully qualified, friendly staff who work in and alongside the Product Development Team

Additional Information

OEM option	Available for bulk buy OEM
Made In	Manufactured in Great Britain (GB) by Brainboxes - Winner 2005 European Electronics Industry Awards 'Manufacturer of the Year'
Customisable	Brainboxes operate a 'Perfect Fit Custom Design' policy for volume users. More info:sales@brainboxes.com



PW-600

Power supply with connectors for UK, USA, EU and AUS mains socket. 'Tails' are suitable for connecting to screw terminal blocks.



PW-650

Power supply with USB connector and prewired screw terminal block. Suitable for use with 5V USB ports.



SW Range

Switch products available in a range of formats and specifications.

www.brainboxes.com

X-ON Electronics

Largest Supplier of Electrical and Electronic Components

Click to view similar products for [Unmanaged Ethernet Switches](#) category:

Click to view products by [Brainboxes](#) manufacturer:

Other Similar products are found below :

[PE-505](#) [TM4ES4](#) [SW-514](#) [SW-114](#) [SW-084](#) [BB-ESW105-A](#) [FL SWITCH SFN 5GT](#) [1240880000](#) [1240930000](#) [1241380000](#)