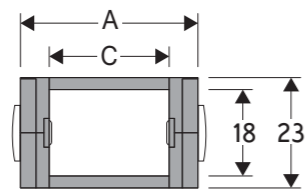


# Serie Medium

## 300 Nylon Cable Chain

Inner height (D) 17 mm  
Single link construction with anti-friction single-pin. Non-opening. The chain is an extremely strong 18 mm chain, particularly suitable for high frequency/acceleration operations, like on laser cutting heads, in which the chain is highly stressed, due to high acceleration in all 3 directions.



| Pin           |
|---------------|
| Part.no PG300 |

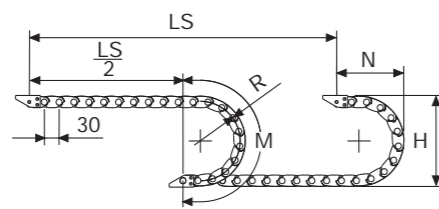
### Technical characteristics when self-supported

|              |                     |
|--------------|---------------------|
| Speed        | 10 m/s              |
| Acceleration | 50 m/s <sup>2</sup> |

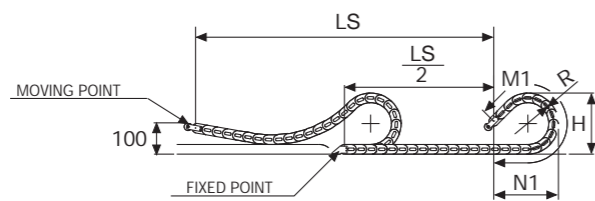
For higher requirements please consult our technical dept.

| A  | B  | C  | D  | R               | Weight/m | Chain        |
|----|----|----|----|-----------------|----------|--------------|
| mm | mm | mm | mm | mm              | kg       | Part Number  |
| 30 | 23 | 14 | 18 | 040-060-080-120 | 0,38     | 300015 □□□ * |
| 41 | 23 | 25 | 18 | 040-060-080-120 | 0,43     | 300025 □□□ * |
| 52 | 23 | 36 | 18 | 040-060-080-120 | 0,48     | 300035 □□□ * |

\*Complete the code by inserting the value of the radius (R): Ex. 300015 □□□ □



| R   | H   | N   | M   | N1  | M1   |
|-----|-----|-----|-----|-----|------|
| mm  | mm  | mm  | mm  | mm  | mm   |
| 40  | 103 | 85  | 185 | 185 | 385  |
| 60  | 143 | 105 | 248 | 410 | 865  |
| 80  | 183 | 125 | 315 | 545 | 1165 |
| 120 | 263 | 165 | 440 | 750 | 1640 |



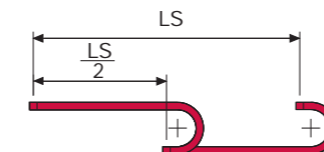
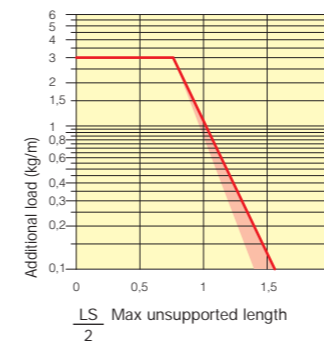
For sliding applications, technical data can slightly change according to frequency, added weight and environment.

Length of chain (L)  
Half travel distance ( $\frac{LS}{2}$ )  
plus length of curve (M) or (M1)

$$L = \frac{LS}{2} + M \text{ or } M1$$

### Self-Supporting Capacity Diagram

The maximum length of the self-supporting capacity ( $\frac{LS}{2}$ ) in relationship to the weight of the cables and hoses contained per linear metre.



The red marking in the diagram area considers the difference of weight between various widths of chain.

For applications with  $\frac{LS}{2}$  and weights not included in the area of the diagram showing self-supporting capacity, verify the possible use of support rollers (see page 30).

### Bright Zinc Plated Steel End Brackets\*\*\*

The end brackets set allows the two ends of the chain to be attached to the equipment.

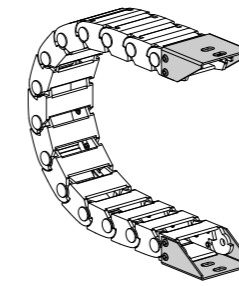
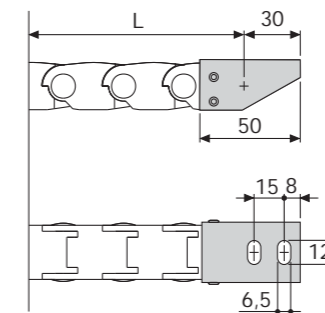


Fig. A  
Chain fixed outside the radius. (Fig A)  
See end brackets mounting variations page 31.



### Bright Zinc Plated Steel Type Part Numbers

| Complete Set Assembled | End Brackets  |
|------------------------|---------------|
| Chain                  | Set           |
| 300015...              | AP300KM □**   |
| 300025...              | AG300KM □**   |
| 300035...              | A300035KM □** |

| Complete Set Unassembled | End Brackets |
|--------------------------|--------------|
| Chain                    | Set          |
| 300015...                | AP300K □**   |
| 300025...                | AG300K □**   |
| 300035...                | A300035K □** |

\*\* 1=Pos.1; 2=Pos.2; 3=Pos.3  
\*\*\* Available on request in stainless steel

# Serie Medium

## 300 Nylon Cable Chain

3



Suitable to long travel distance.  
To choose the guide channel see page 54

Special tool to remove the connecting pivots:  
Part Number PZ010.



For further information please consult Brevetti Stendalto's Technical Office



## X-ON Electronics

Largest Supplier of Electrical and Electronic Components

*Click to view similar products for [Cable Mounting & Accessories](#) category:*

*Click to view products by [Brevetti](#) manufacturer:*

Other Similar products are found below :

[HP-4N](#) [582603-1](#) [009333-000](#) [727844N003](#) [809090N001](#) [8109](#) [843188-000](#) [843459N001](#) [843460N003](#) [8666](#) [967279N002](#) [GPQC1/0](#) [DB-11](#) [1300830208](#) [1300840039](#) [1300900026](#) [1300990052](#) [1301740005](#) [1301800121](#) [1301800416](#) [1300830184](#) [1300990149](#) [1301580036](#) [1301720103](#) [1301720135](#) [1301720152](#) [1301720157](#) [1301740009](#) [1301770011](#) [1301850553](#) [1301860939](#) [1302000074](#) [1302264431](#) [1337706-2](#) [APA18-AK](#) [MTX6UTPSRC-C](#) [1-787307-1](#) [185491N001](#) [HP-6N](#) [C-202-C](#) [202C221-13-0](#) [OMTM-S10-C0](#) [205339-4](#) [CA7308-000](#) [8S23-75FR-CS8184](#) [2684](#) [9648](#) [3089](#) [988382-000](#) [A0270164](#)