

Stand-Alone Hi-Lo Logging Feature At Sampling Speed Of <math><50\text{ms}</math>

Plus On-Screen Logged-Data Recall &
PC Communication Features

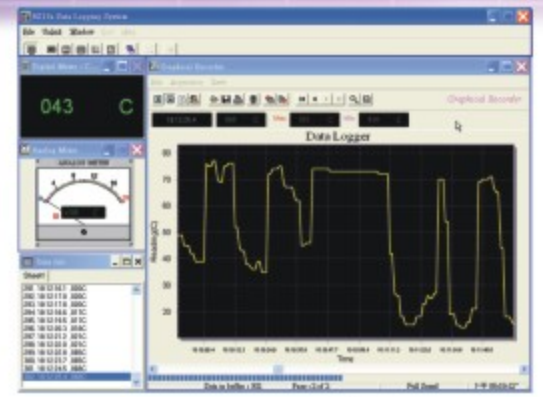


CE

BM130
LoggerClamp™ Series

BRYMEN®

BRIGHT PEOPLE'S CHOICE
<http://www.brymen.com>



**BR13XPC Interface Kit
(Optional Purchase)**

| 135 | 132 | 131 | FUNCTIONS & FEATURES |
|-----|-----|-----|---|
| ● | ● | ● | Stylish & Versatile |
| ● | ● | ● | 45mm Large jaws opening; 1000A AC Clamp-on + Multimeter ranges |
| ● | ● | ● | 600VAC/DC input protection on all functions |
| ● | ● | | AC True RMS voltage and current functions |
| ● | ● | | Back lighted LCD display |
| ● | | | Total Harmonic Distortion THD%-R (% of Total Harmonics / Total RMS) |
| ● | ● | ● | Data HOLD |
| ● | ● | ● | Auto HOLD (Automatic capture and display stable values) |
| ● | ● | ● | PC-Comm (Optical isolated PC interface capability) |
| ● | ● | ● | Software for Win 95/98/ME/2000/XP (Optional purchase) |
| ● | ● | ● | 5400 points Hi-Lo logging (captures surges & sags of every minute) |
| ● | ● | ● | On screen Hi-Lo logging data review capability |
| ● | ● | ● | K-Type Temperature -50°C to 300°C (-58°F to 572°F) |
| ● | ● | ● | 5.00Hz ~ 500.0Hz line Frequency measurements |
| ● | ● | ● | Overload-Alert, On > 600V AC or DC (OL Indication) |
| ● | ● | ● | DCV & ACV 0.1V to 600.0V |
| ● | ● | ● | ACA 0.01A to 1000A non-invasive current measurements |
| ● | ● | ● | Ohm 0.1Ω to 999.9Ω |
| ● | ● | ● | Fast Audible Continuity |
| ● | ● | ● | Battery cover with Probe holders |
| ● | ● | ● | Rugged Fire retarded casing; Soft carrying pouch |
| ● | ● | ● | Transient protection 6.5kV 1.2/50μs lightning surge |
| ● | ● | ● | LVD EN61010-2-032 CAT III 600V |
| ● | ● | ● | EMC EN61326(97/98A1)/EN61000-4-2(95)/EN61000-4-3(96) |

A Handy & Cost-Effective Solution For Surges & Sags Monitoring !

Long Term Monitoring Up To 5400 Minutes Without The Need Of A Computer !

LARGE U-SHAPE CLAMP JAWS

MEASURE ACA OF LARGE SINGLE CONDUCTOR
OR DIFFERENTIAL ACA OF MULTIPLE CONDUCTORS

RUGGED & DURABLE

HIGH-IMPACT FIRE-RETARDED ENCLOSURE
FOR REINFORCED SAFETY & RELIABILITY

LVD CAT III 600V SAFETY

MEETS EN61010-2-032 CAT III 600V

LOGGED DATA RECALL

UP/DOWN QUICK VIEW OF HI-Lo DATA
ON LCD. NO COMPUTER IS REQUIRED

PC-COMM INTERFACE CABILITIES

BUILT-IN OPTICAL ISOLATED DATA
OUTPUT PORT. OPTIONAL PURCHASE
INTERFACE KIT FOR PC CONNECTION

TRUE RMS MEASUREMENTS (BM132 & BM135)

FOR NON-SINUSOIDAL WAVEFORMS
OF AC VOLTAGES & AC CURRENTS

WIDE ACV & ACA BAND-WIDTH (BM132 & BM135)

UP TO 3.1KHz AC BAND-WIDTH
TO MEASURE MORE TRUE RMS DETAILS

DISPLAY BACKLIGHT (BM132 & BM135)

FOR EASY VIEWING IN THE DARK

0.5% DCV BASIC ACCURACY

UP TO 600 VOLTS, 0.1V RESOLUTION

TEMPERATURE

TYPE-K MEASUREMENT;
SELECTABLE °C OR °F READINGS;
COMES WITH BKP60 BEAD PROBE

UP TO AC 1000 AMPS MEASUREMENTS

3 NON-INVASIVE AC CURRENT RANGES
VIA CLAMP JAWS; BEST RESOLUTION 0.01A

EMC

MEETS EN61326(1997, 1998/A1),
EN61000-4-2(1995), & EN61000-4-3(1996)

TRANSIENT PROTECTION

UP TO 6.5kV 1.2/50µs LIGHTNING SURGE;
MORE CONFIDENCE FOR SERIOUS USERS

STYLISH & HANDY

ALSO COMES WITH A SOFT POUCH
FOR EASY CARRYING & PROTECTION

AUTO-HOLD

AUTOMATICALLY CAPTURES & DISPLAYS
SIGNIFICANT STABLE READINGS

DATA HOLD

FREEZES THE DISPLAYING
READING FOR LATER VIEW

BATTERY COMPARTMENT

WITH ACCESS DOOR FOR
EASY BATTERY REPLACEMENT

PROBE HOLDERS

BUILT-IN PROBE STORAGE HOLDERS

5400 MINUTES HI-Lo LOGGING

LOGS V OR A SURGE (Hi) & SAG (Lo)
OF EVERY 1 MINUTE INTERVAL
AT SAMPLING SPEED < 50ms

HIGH CURRENT Hz

MEASURES NON-INVASIVE
ACA FREQUENCY VIA CLAMP JAWS

HIGH VOLTAGE Hz

MEASURES NOISY HIGH VOLTAGE
ACV FREQUENCIES VIA TEST LEADS

THD%-R (BM135 ONLY)

INDICATES TOTAL HARMONIC DISTORTION-RMS
ON CURRENT OR VOLTAGE MEASUREMENTS

250µs FAST AUDIBLE CONTINUITY

FOR QUICK OPEN-SHORT TESTS
ON SWITCHES, FUSES, AND WIRES

RESISTANCE

UP TO 999.9 OHMS, 0.1 OHM
RESOLUTION WITH 600V PROTECTION



BM131, BM132 & BM135 GENERAL SPECIFICATION

Display:
Voltage function: 6000 counts
Ohm & Hz functions: 9999 counts
ACA clamp-on function: 4000 counts
Update Rate:
Voltage, ACA clamp-on, Ohms & Temperature functions: 4 per second nominal
Hz function: 2 per second nominal
Polarity: Automatic
Operating Temperature: 0°C ~ 40°C
Relative Humidity:
Maximum relative humidity 80% for temperature up to 31°C decreasing linearly to 50% relative humidity at 40°C
Altitude: Operating below 2000m
Storage Temperature: -20°C ~ 60°C, < 80% R.H. (with battery removed)
Temperature Coefficient:
Nominal 0.15 x (specified accuracy)/°C @ (0°C ~ 18°C or 28°C ~ 40°C) or otherwise specified
Sensing: Average sensing for BM131; True RMS sensing for BM132 & BM135

Pollution Degree: 2
Safety: Meets IEC61010-2-032 (1994), EN61010-2 (1995), UL3111-2-032 (1999)
Measurement Category: CAT III 600V AC & DC
Transient Protection:
6.5kV for all models (1.2/50µs surge)
E.M.C.:
Meets EN61326 (1997, 1998/A1), EN61000-4 -2 (1995), & EN61000-4-3 (1996)
In an RF Field of 3V/m:
Total accuracy = Specified accuracy + 45 digits;
Performance above 3V/m is not specified
Overload Protection:
ACA Clamp-on jaws: AC 1000A rms continuous + & COM terminals (all functions): 600VDC/VAC rms
Power Supply: standard 1.5V AAA Size (NEDA 24A or IEC LR03) battery x 2
Power Consumption (typical):
Voltage & ACA functions: 3.5mA typical
Ohm & Temperature functions: 4mA typical
Low Battery: Below approx. 2.4V

APO Consumption: 10µA typical
APO Timing: Idle for 16 minutes
Dimension: L224mm x W78mm x H40mm
Weight: approx. 224 gm
Jaws Opening & Conductor Diameter:
45mm max
Special Features: Auto-Hold; Display Hold; Display Backlight (BM132 & BM135 only); THD%-R Total harmonic distortion-RMS (BM135 only); On screen stand-alone Hi-Lo Logging (5400 minutes) at sampling speed of faster than:
20 per second for Voltage & ACA functions
4 per second for Temperature & Ohms functions
2 per second for Hz function
Accessories: Test lead pair, user's manual, batteries installed, BKP60 banana plug type-K thermocouple & soft carrying pouch
Optional Accessories: BR13X PC interface kit (including BA-1XX optical adaptor back, BC-100R cable & Bs13x software CD), BKB32 banana plug to type-K socket plug adaptor

BM131, BM132 & BM135 Electrical Specification

Accuracy is ± (% of reading digits + number of digits) or otherwise specified, at 23°C ± 5°C and less than 75% R.H.
True RMS models BM132 & BM135 ACV & ACA clamp-on accuracies are specified from 5% to 100% of range or otherwise specified. Maximum Crest Factor are as specified below, and with frequency spectrums, besides fundamentals, fall within the meter specified AC bandwidth for non-sinusoidal waveforms. Fundamentals are specified at 50Hz or 60Hz.

DC Voltage

| RANGE | Accuracy |
|--------|----------|
| 600.0V | 0.5%+5d |

NMR: > 50dB @ 50Hz/60Hz
CMRR: > 120dB @ DC, 50Hz/60Hz, Rs=1kΩ
Input Impedance: 2MΩ, 30pF nominal

AC Voltage

| RANGE | Accuracy |
|-------------------------------------|----------|
| 50Hz / 60Hz | |
| 600.0V | 1.0%+5d |
| 45Hz ~ 500Hz | |
| 600.0V | 1.5%+5d |
| 500Hz ~ 3.1kHz (BM132 & BM135 only) | |
| 600.0V | 2.5%+5d |

CMRR: > 60dB @ DC to 60Hz, Rs=1kΩ
Input Impedance: 2MΩ, 30pF nominal
True RMS models Crest Factor:
< 2.3 : 1 at full scale & < 4.6 : 1 at half scale

AC Current (Clamp-On)

| RANGE | Accuracy ^{1) 2) 3)} |
|-------------------------------------|------------------------------|
| 50Hz / 60Hz | |
| 40.00A, 400.0A, 1000A | 1.0%+5d |
| 45Hz ~ 500Hz | |
| 40.00A, 400.0A | 2.0%+5d |
| 1000A | 2.5%+5d |
| 500Hz ~ 3.1kHz (BM132 & BM135 only) | |
| 40.00A, 400.0A | 2.5%+5d |
| 1000A | 3.0%+5d |

True RMS models Crest Factor:
< 2.5 : 1 at full scale & < 5.0 : 1 at half scale for 40.00A & 400.0A ranges
< 1.4 : 1 at full scale & < 2.8 : 1 at half scale for 1000A range

- ¹⁾Add 8d to specified accuracy while reading is below 10% of range
²⁾Induced error from adjacent current-carrying conductor: < 0.06A/A
³⁾Specified accuracy is for measurements made at the jaw center. When the conductor is not positioned at the jaw center, position errors introduced are:
Add 1% to specified accuracy for measurements made WITHIN jaws marking lines (away from jaws opening)
Add 4% to specified accuracy for measurements made BEYOND jaws marking lines (toward jaws opening)

Ohms

| RANGE | Accuracy |
|--------|----------|
| 999.9Ω | 1.0%+6d |

Open Circuit Voltage: 0.4VDC typical

Audible Continuity Tester

Audible threshold: between 10Ω and 300Ω
Response time: 250µs typical

Frequency

| RANGE | Accuracy |
|------------------|----------|
| 5.00Hz ~ 500.0Hz | 0.5%+4d |

Sensitivity (Sine RMS):
40A range: > 4A
400A range: > 40A
1000A range: > 400A
600V range: > 30V

Temperature

| RANGE | Accuracy ^{1) 2)} |
|---------------|---------------------------|
| -50°C ~ 300°C | 2%+3°C |
| -58°F ~ 572°F | 2%+6°F |

- ¹⁾Type-K thermocouple range & accuracy not included
²⁾Add 3°C (or 6°F) to specified accuracy @ -20°C ~ -50°C (@ -4°F ~ -58°F)

THD%-R ¹⁾ (BM135 only)

| RANGE | Harmonic order | Accuracy ²⁾ |
|------------|----------------|------------------------|
| 0.0%~99.9% | Fundamental | 1.5% of Reading + 6d |
| | 2nd ~ 3rd | 5.0% of Reading + 6d |
| | 4th ~ 10th | 2.5% of Reading + 6d |
| | 11th ~ 51st | 2.0% of Reading + 6d |

- ¹⁾THD%-R is defined as:
(Total Harmonic RMS / Total RMS) x 100%
²⁾Specified accuracy @ ACA Fundamental > 5A; ACV Fundamental > 50V



BRYMEN TECHNOLOGY CORPORATION

http://www.brymen.com
TEL: +886 2 2226 3396 (rep)
FAX: +886 2 2225 0025
Copyright © MMV B.T.C. All rights reserved
Specifications subject to change without notice
Patented & Patents Pending. Printed in Taiwan

Distributor:

X-ON Electronics

Largest Supplier of Electrical and Electronic Components

Click to view similar products for [Clamp Multimeters & Accessories](#) category:

Click to view products by [Brymen](#) manufacturer:

Other Similar products are found below :

[I800](#) [BK313C](#) [BM035](#) [BM198PV](#) [BK312C](#) [BM031](#) [BM037](#) [BM078](#) [BM088](#) [P 4250](#) [P 4350](#) [WMGBCMP401](#) [KEW105816](#)
[WMGBCMP200](#) [WMGBCMP2000](#) [WMGBCMP3000](#) [WMGBCMP400](#) [FLUKE 377 FC](#) [FLUKE 378 FC](#) [FLUKE 393 FC](#) [MW3035](#) [NC11-](#)
[200M1](#) [NC12-200M1](#) [NC14-100M1](#) [P 1610](#) [P 1615](#) [P 1625](#) [P 1640](#) [P 1650](#) [P 1655](#) [P 1660](#) [P 1665](#) [P 1700](#) [UT202F](#) [UT202R](#) [UT219E](#)
[UT281A](#) [UT281C](#) [DCM140](#) [1000-304](#) [TESTO 770-3 0590 7703](#) [AX-3550](#) [AX-M266C](#) [BM079](#) [BM089](#) [BM197](#) [UT204](#) [KEW2210R](#)
[FLUKE 80I-110S](#) [FLUKE A3002FC](#)