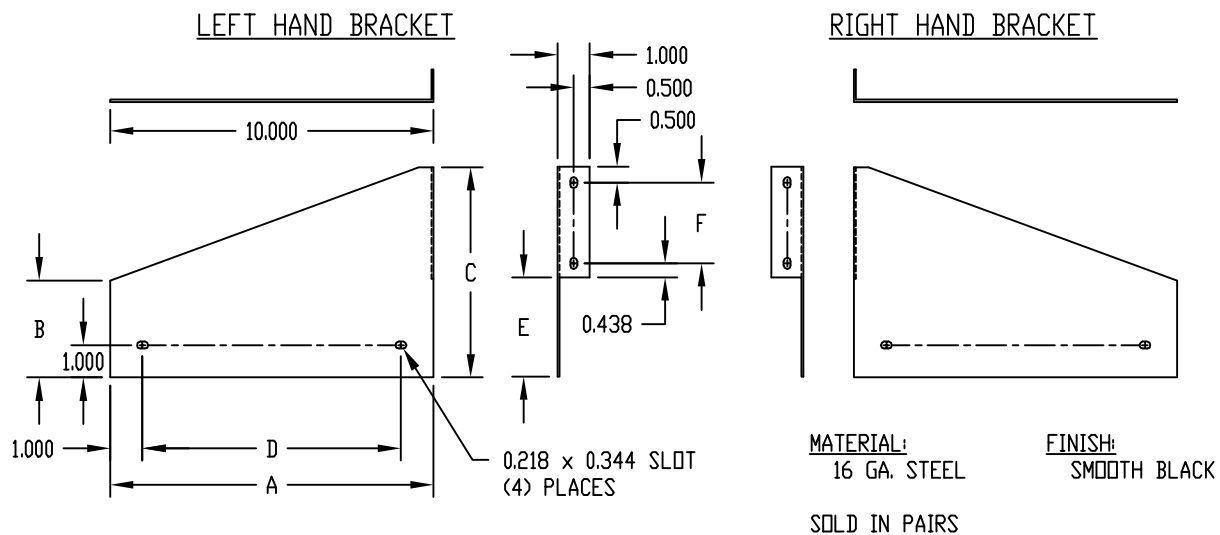


PART NAME	CHASSIS MOUNTING BRACKET	PART No.	MB-448 TO MB-460
-----------	--------------------------	----------	------------------



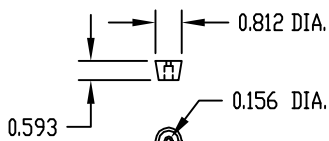
PART No.	A	B	C	D	E	F
MB-448	10.000	3.000	6.500	8.000	3.062	2.500
MB-449	12.000	3.000	6.500	10.000	3.062	2.500
MB-450	10.000	4.000	8.500	8.000	4.062	3.500
MB-451	13.000	4.000	8.500	11.000	4.062	3.500
MB-458	8.000	3.000	6.500	6.000	3.062	2.500
MB-459	11.000	3.000	6.500	9.000	3.062	2.500
MB-460	13.000	3.000	6.500	11.000	3.062	2.500

PART NAME	BAIL	PART No.	BC-14210
-----------	------	----------	----------

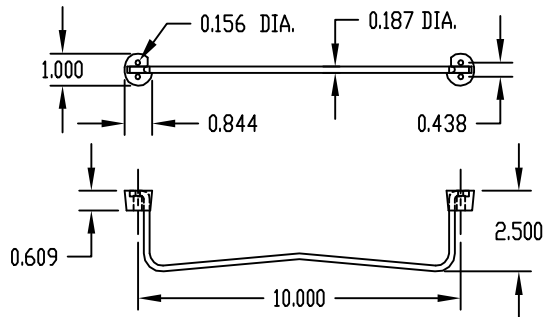
MATERIAL: BAIL _____ 3/16 DIA. STEEL
FEET _____ NYLON

ASSEMBLED WITH QTY. (6) SHEET METAL SCREWS #6 x 1/2 LG. (SUPPLIED)

FINISH: BAIL _____ CHROME PLATED
FEET _____ BLACK



REAR FEET
QTY. (2) SUPPLIED



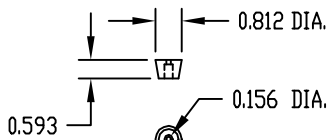
BAIL & FRONT FEET

PART NAME	BAIL	PART No.	BC-14215
-----------	------	----------	----------

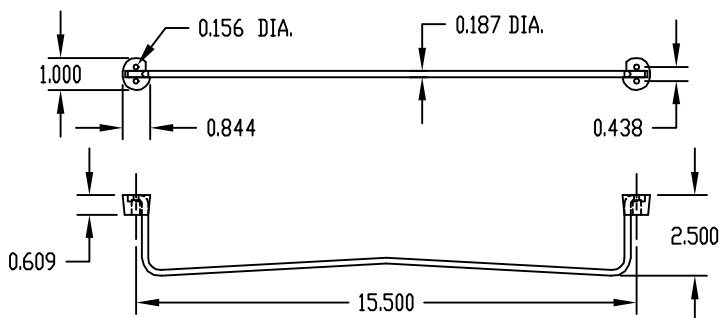
MATERIAL: BAIL _____ 3/16 DIA. STEEL
FEET _____ NYLON

ASSEMBLED WITH QTY. (6) SHEET METAL SCREWS #6 x 1/2 LG. (SUPPLIED)

FINISH: BAIL _____ CHROME PLATED
FEET _____ BLACK



REAR FEET
QTY. (2) SUPPLIED



BAIL & FRONT FEET

X-ON Electronics

Largest Supplier of Electrical and Electronic Components

Click to view similar products for [Racks & Rack Cabinet Accessories](#) category:

Click to view products by [Bud Industries](#) manufacturer:

Other Similar products are found below :

[M00-PLN](#) [F2424](#) [8351-832-A-24](#) [9104](#) [9105](#) [PLFF2000](#) [H-9163-B](#) [1427C3](#) [HTS10](#) [PC-79](#) [SC10-3A](#) [SC4-28](#) [CG3-340S/12](#) [CP-001BK](#)
[M6123-4007-SS](#) [TS170](#) [LP40](#) [5261304-07](#) [CG3-160G](#) [7112C-PLN](#) [ALUM](#) [CM10](#) [8610-3124-S-26](#) [TS81](#) [7142](#) [GP134](#) [M6125-4007-A-24](#)
[M6127-4007-SS](#) [PBCOVER](#) [512](#) [AEG-4000G](#) [AEG-3000G](#) [HD99](#) [SR2-66A2](#) [FP10B4HP-1](#) [SR16-66A2](#) [FP52-2](#) [1406-1006-01](#) [29478](#)
[TS2535](#) [TS169-6](#) [CAC2](#) [HA19-3U](#) [BR-19-10-1](#) [TS180](#) [CG3-ESD](#) [SC11-1](#) [CFS-1.00/2.20](#) [HEC0800PB](#) [ZC633R](#) [140PLN](#)