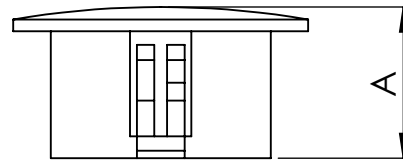
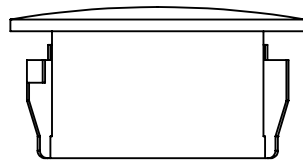
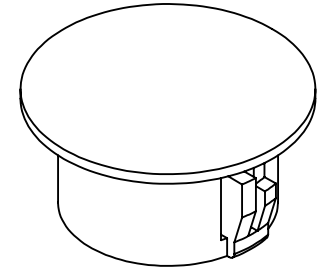
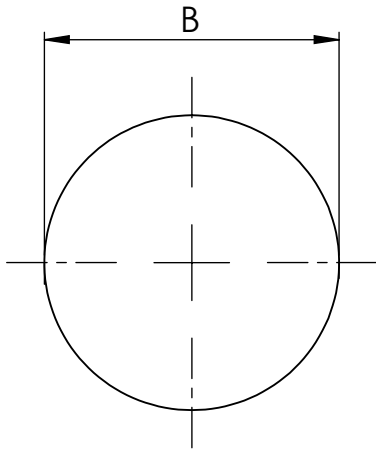


PART
NAME

HPG SERIES - PA66 NYLON HOLE PLUG

PART
No.HPG-14228 THROUGH
HPG-142230REV.
DATE

3/24/15



NOTES:

- 1- PA66 NYLON HOLE PLUG
- 2- MAX WALL THICKNESS:
14 Ga. STEEL & .125"[3.2] THICK PLASTIC
- 3- COLOR: BLACK
- 4- DIMENSIONS ARE INCH[MM]
- 5- TOLERANCE ALL DIMENSIONS = +/- 0.01[.25]

PART NUMBER	HOLE DIAMETER	DIM A	DIM B
HPG-14228	FITS 0.31 [7.87]	0.32 [8.1]	0.4 [10.2]
HPG-142210	FITS 0.39 [9.9]	0.41 [10.4]	0.51 [12.9]
HPG-142213	FITS 0.51 [12.9]	0.43 [10.9]	0.65 [16.5]
HPG-142216	FITS 0.63 [16]	0.4 [10.2]	0.76 [19.3]
HPG-142219	FITS 0.75 [19]	0.4 [10.2]	0.91 [23.1]
HPG-142222	FITS 0.87 [22.1]	0.45 [11.4]	1.02 [25.9]
HPG-142226	FITS 1.02 [25.9]	0.48 [12.2]	1.14 [28.9]
HPG-142230	FITS 1.18 [30]	0.47 [11.9]	1.36 [34.5]

X-ON Electronics

Largest Supplier of Electrical and Electronic Components

Click to view similar products for [Conduit Fittings & Accessories](#) *category:*

Click to view products by [Bud Industries](#) *manufacturer:*

Other Similar products are found below :

[M3231GAB](#) [M3231GAC](#) [M3231GAE](#) [M3231GL](#) [M3231GN](#) [M3231GT](#) [VC-937-16/RED](#) [VC-562-16/RED](#) [VC-1125-16/RED](#) [DM0240-1/2A](#) [3408B](#) [G6002](#) [M4340GAE](#) [C2016-P](#) [C2012-P](#) [3407B](#) [561-87BG11BLK](#) [561-75BG11B](#) [1.533.1201.50](#) [1.533.1601.51](#) [1.533.2001.51](#) [1.533.4001.50](#) [1.533.5001.50](#) [BVNV-P428](#) [BVBV-P366](#) [VC-687-16/RED](#) [2276](#) [2663-P](#) [3405B](#) [C2070-P](#) [3582V](#) [2643-P](#) [4975](#) [2644-P](#) [2955](#) [M50](#) [2404-P](#) [C2008-P](#) [2723-P](#) [2291](#) [2133-P](#) [3048F](#) [VC12516](#) [RC156-0500](#) [DM0523-1/2A](#) [1035A](#) [DMS0250-1A](#) [DMS0313-1A](#) [1040A](#) [1050A](#) [R1/8A](#)