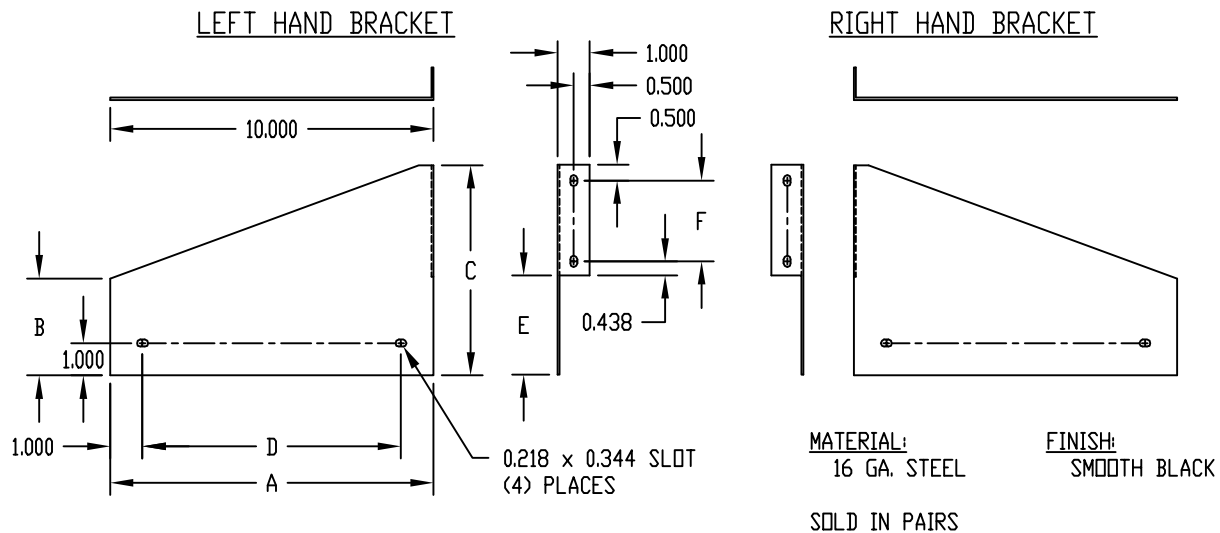


PART NAME	CHASSIS MOUNTING BRACKET	PART No.	MB-448 TO MB-460
-----------	--------------------------	----------	------------------



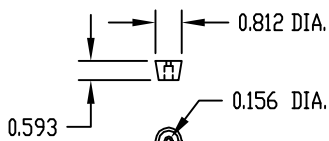
PART No.	A	B	C	D	E	F
MB-448	10.000	3.000	6.500	8.000	3.062	2.500
MB-449	12.000	3.000	6.500	10.000	3.062	2.500
MB-450	10.000	4.000	8.500	8.000	4.062	3.500
MB-451	13.000	4.000	8.500	11.000	4.062	3.500
MB-458	8.000	3.000	6.500	6.000	3.062	2.500
MB-459	11.000	3.000	6.500	9.000	3.062	2.500
MB-460	13.000	3.000	6.500	11.000	3.062	2.500

PART NAME	BAIL	PART No.	BC-14210
-----------	------	----------	----------

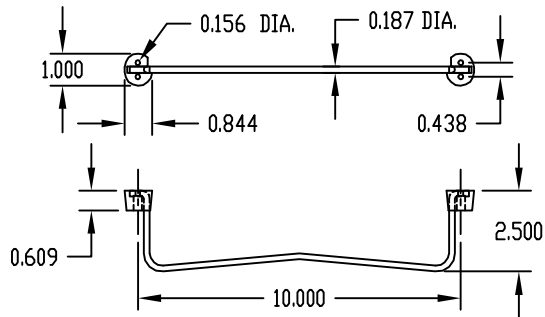
MATERIAL: BAIL _____ 3/16 DIA. STEEL
FEET _____ NYLON

ASSEMBLED WITH QTY. (6) SHEET METAL SCREWS #6 x 1/2 LG. (SUPPLIED)

FINISH: BAIL _____ CHROME PLATED
FEET _____ BLACK



REAR FEET
QTY. (2) SUPPLIED



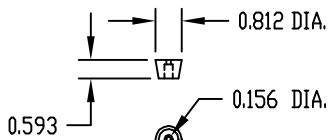
BAIL & FRONT FEET

PART NAME	BAIL	PART No.	BC-14215
-----------	------	----------	----------

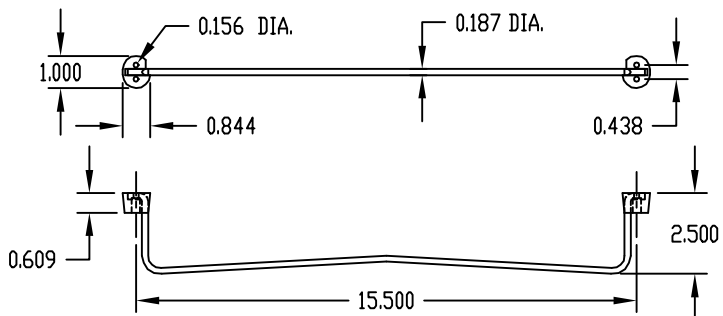
MATERIAL: BAIL _____ 3/16 DIA. STEEL
FEET _____ NYLON

ASSEMBLED WITH QTY. (6) SHEET METAL SCREWS #6 x 1/2 LG. (SUPPLIED)

FINISH: BAIL _____ CHROME PLATED
FEET _____ BLACK



REAR FEET
QTY. (2) SUPPLIED



BAIL & FRONT FEET

X-ON Electronics

Largest Supplier of Electrical and Electronic Components

Click to view similar products for [Bud Industries](#) manufacturer:

Other Similar products are found below :

[CR-1727](#) [LW-3213](#) [CSA-11264](#) [CU-247 MODIFIED](#) [CU-382-MB](#) [CU-4234](#) [CU-4247-B](#) [CU-5123](#) [CU-5475](#) [CU-622-A](#) [CU-7127-GT](#) [FN-1280](#) [FT-1979](#) [PMR-9449-NF](#) [PS-11296-G](#) [PS-1250-MG](#) [PS-1258](#) [H-9164-B](#) [AC-1610](#) [RFV-20203](#) [RL-7765](#) [RM-14212](#) [RM-14213](#) [AN-1301-G](#) [AN-1305-A](#) [AN-2813-A](#) [AN-2816-A](#) [AS-5061](#) [BAS-5101](#) [BAS-5104](#) [BAS-5108](#) [BB-1801-BT](#) [BB-1803-BT](#) [BBC-1824](#) [BP-681](#) [BP-705](#) [NBD-10462](#) [NBF-32228](#) [NBF-32234](#) [NBF-32320](#) [NHC-14156](#) [C-1588](#) [PA-1101-LG](#) [PA-1105-BR](#) [PA-1109-WH](#) [PA-1138-WH](#) [JB-1654](#) [PA-2402-MG](#) [PA-3105-HG](#) [PC-11406](#)