

PART NAME NON-METALLIC ENCLOSURE (STYLE D)

PART No. NBD-10442 & NBD-10462 & NBD-15442

MATERIAL:

INDOOR VERSION

SOLID BODY & COVER _____ ABS/PC BLENDED PLASTIC
UL94-5VB FLAMMABILITY RATING

CLEAR COVER _____ POLYCARBONATE PLASTIC
UL94V-0 FLAMMABILITY RATING
UV STABILIZED

OUTDOOR VERSION

SOLID BODY & COVER _____ PBT/PC BLENDED PLASTIC
UL94-5VA FLAMMABILITY RATING
UV STABILIZED

FINISH:

BODY _____ LIGHT GRAY
COVER _____ LIGHT GRAY OR CLEAR

COVER INCLUDES GRAY POLYURETHANE GASKET.

NOTE: COVER ATTACHES WITH PHILLIPS DRIVE
NON-METALLIC SCREWS. (NOT SHOWN)

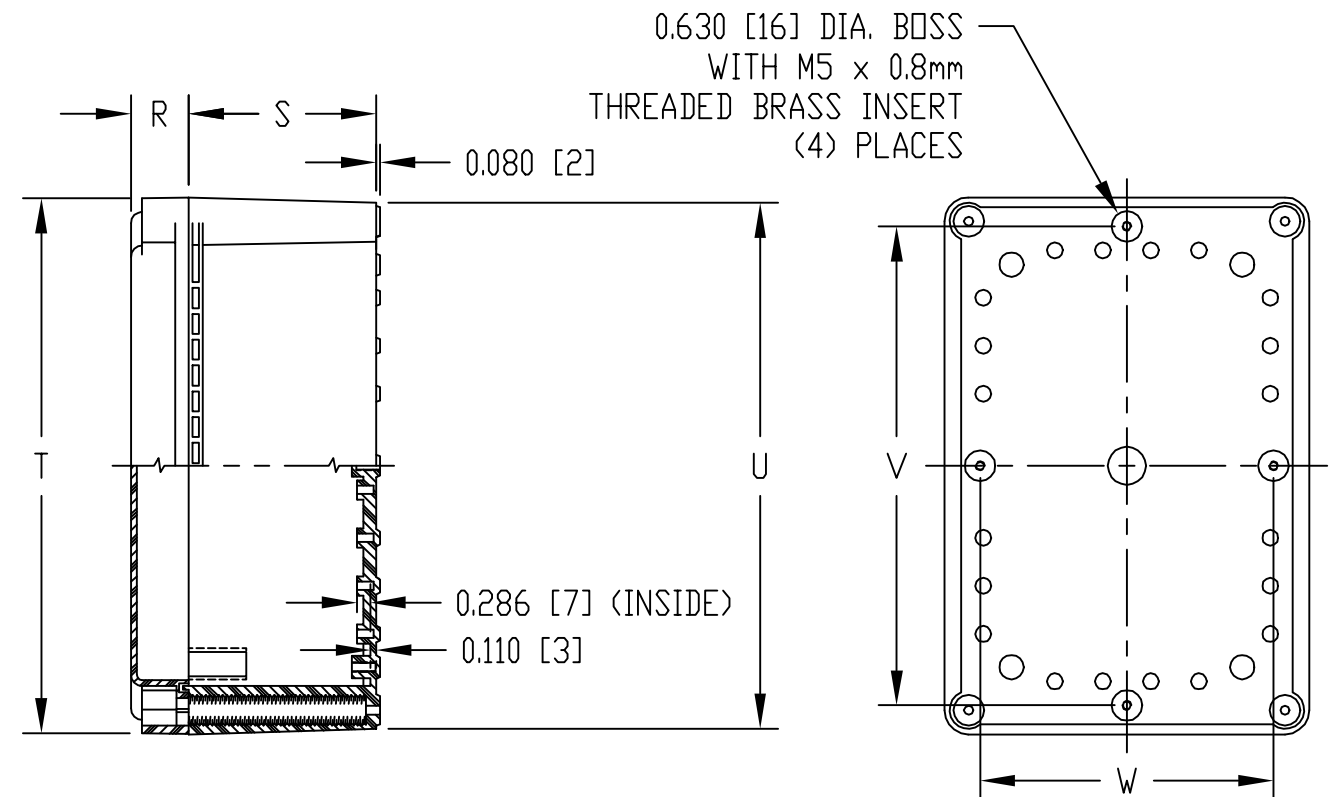
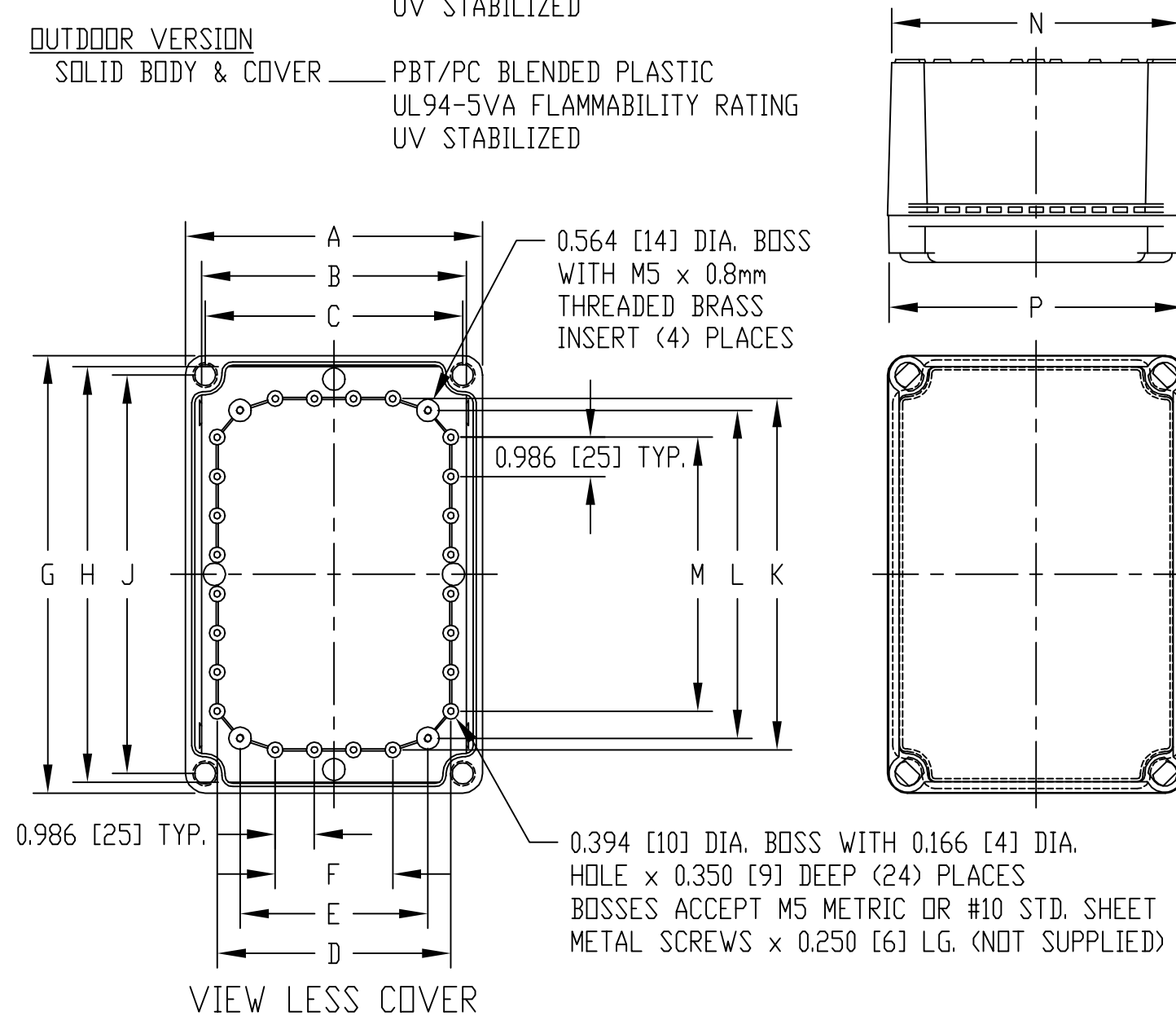
INDUSTRY STANDARDS:

INDOOR VERSION

UL508 TYPE 1, 2, 4, 4X INDOOR, 12 & 13
NEMA TYPE 1, 2, 4, 4X, 12 & 13
IEC529-IP65

OUTDOOR VERSION

UL508 TYPE 1, 2, 4, 4X, 12 & 13
NEMA TYPE 1, 2, 4, 4X, 12 & 13
IEC529-IP65



AIR AND MOISTURE VENTS, STAINLESS
STEEL LOCKING HASP, PANEL MOUNTING
RAILS, GALVANIZED STEEL INNER PANEL
AND STAINLESS STEEL WALL MOUNTING
BRACKETS ARE NOT INCLUDED, BUT CAN
BE PURCHASED SEPARATELY.

DIMENSIONS = INCHES
[MILLIMETERS]

NOTE: ALL DIMENSIONS HAVE ±0.039 [±1] TOLERANCE
UNLESS OTHERWISE SPECIFIED

INDOOR VERSION		OUTDOOR VERSION	DIMENSIONS																			
PART NO.		PART NO.	A	B	C	D	E	F	G	H	J	K	L	M	N	P	R	S	T	U	V	W
SOLID COVER	CLEAR COVER	SOLID COVER																				
NBD-10442	NBD-10462	NBD-15442	7.485 [190]	6.663 [169]	6.496 [165]	5.890 [150]	4.736 [120]	2.958 [75]	11.024 [280]	10.474 [266]	10.039 [255]	8.850 [225]	8.263 [210]	6.902 [175]	7.280 [185]	7.420 [188]	1.181 [30]	3.850 [98]	10.984 [279]	10.805 [274]	9.838 [250]	6.027 [153]

X-ON Electronics

Largest Supplier of Electrical and Electronic Components

Click to view similar products for [Electrical Enclosures](#) category:

Click to view products by [Bud Industries](#) manufacturer:

Other Similar products are found below :

[120-401](#) [120-905](#) [120-909](#) [120-403](#) [130-004](#) [MR-25L+](#) [30-8739](#) [PIP-11774SCREW](#) [30-9715](#) [30-9777-BU](#) [105-905](#) [110-902](#) [110-901](#)
[A16N12BLP](#) [110-406](#) [110-401](#) [110-404](#) [120-405](#) [34861601](#) [106-009](#) [106-505](#) [105-405](#) [111-005](#) [127-909](#) [106-502](#) [130-503](#) [127-455](#)
[9511150](#) [9511017](#) [9820011](#) [NSYTDB5PL](#) [137-455](#) [130-001](#) [105-904](#) [120-404](#) [137-005](#) [130-505](#) [127-406](#) [AB 1,5.0](#) [AB2.0](#) [ABM.0](#)
[73345601](#) [F-MP](#) [H-MP](#) [M-MP](#) [PAT 12040](#) [2461000](#) [9121230](#) [79541301](#) [19001001](#)