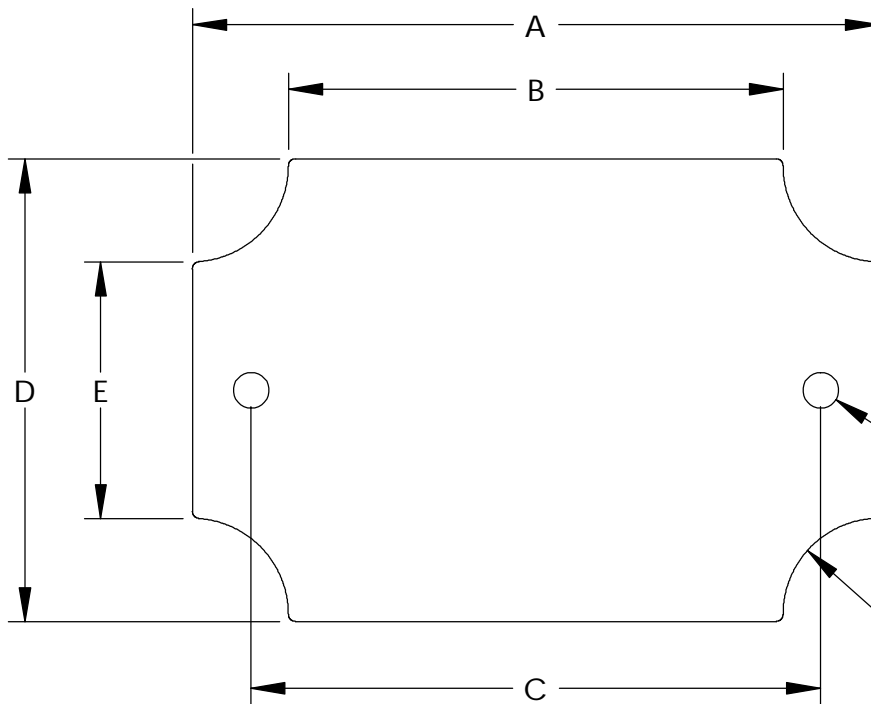


PART
NAME

INTERNAL PANEL

PART
No.

NBX-10975 THRU NBX-10979 AND NBX-10984



MATERIAL:
16 GAUGE GALVANIZED STEEL (.062 [1.5 mm] THK.)

ALL DIMENSIONS HAVE A $\pm .015$ [.4 mm] TOLERANCE
UNLESS OTHERWISE SPECIFIED

ALL PANELS ARE SUPPLIED WITH QTY. (2) M4 x 8mm LG.
TRUSS HD. PHILLIPS DRIVE STAINLESS STEEL MACHINE
SCREWS

$\phi .197$
[5 mm]
(2) PLCS.

F RADIUS (4) PLCS.

PART No.	A	B	C	D	E	F
NBX-10975	3.805 [96.5 mm]	2.739 [69.5 mm]	3.170 [80 mm]	2.560 [65 mm]	1.415 [36 mm]	.551 [14 mm]
NBX-10976	4.556 [115.5 mm]	3.492 [88.5 mm]	3.930 [99.5 mm]	2.560 [65 mm]	1.415 [36 mm]	.551 [14 mm]
NBX-10977	6.516 [165.5 mm]	5.450 [138 mm]	5.866 [149.5 mm]	2.560 [65 mm]	1.415 [36 mm]	.551 [14 mm]
NBX-10978	9.233 [234.5 mm]	8.167 [207 mm]	8.622 [219 mm]	2.560 [65 mm]	1.415 [36 mm]	.551 [14 mm]
NBX-10979	9.262 [235 mm]	8.283 [210 mm]	8.283 [210 mm]	5.384 [137 mm]	4.409 [112 mm]	.437 [11 mm]
NBX-10984	4.882 [124 mm]	4.194 [106.5 mm]	4.330 [110 mm]	4.882 [124 mm]	4.194 [106.5 mm]	.344 [8.7 mm]

X-ON Electronics

Largest Supplier of Electrical and Electronic Components

Click to view similar products for [Electrical Enclosure Accessories](#) *category:*

Click to view products by [Bud Industries](#) *manufacturer:*

Other Similar products are found below :

[60121-06-028 C-325 Black](#) [71884-04-028 CM3-100 Black](#) [71884-18-028 LH43-200 Black](#) [71884-24-028 LH75-200 Black](#) [71885-01-028 CM6-150 Black](#) [72459-02-028 DM-3 BLACK](#) [81501-01-000 XPL, 9VB Black](#) [82402-01 PT-8 ALUM](#) [1335GSKT3](#) [14101FP-PK](#) [CB-1263-BT](#) [1611512-4](#) [HB-11498](#) [RC-7775](#) [HM BLACK PANEL](#) [61033-01-000](#) [115123-01-508 CN-RL RS](#) [115124-01-508 CN-XRL XRS](#) [115119-01-000 CN-RL RS](#) [115123-01-000 CN-RL RS](#) [60121-04-028 C-275 Black](#) [60128-01-072](#) [60222-01-028 CM6-225 Black](#) [60272-01-028 CM3-150 Black](#) [60851-01-028 CM69-120 Black](#) [62291-502-000-KEU-10-BLK](#) [62452-01-000 HML-9VB, EB Black](#) [71884-25-028 LH89-130 Black](#) [AXX2POSTBRCKT](#) [FUPMESK](#) [71884-23-028 LH75-130 Black](#) [1317GSKTSC](#) [8G813V40389](#) [DVA.1-10-15-M4-10-70](#) [DVC.1-60-49-60-M10-28-55](#) [DVC.1-15-8,5-15-M4-10-40](#) [DVC.1-20-12-30-M6-18-40](#) [DVC.1-30-18-25-M8-20-40](#) [DVC.1-35-31-15-M8-20-40](#) [DVC.1-35-31-15-M8-20-70](#) [DVC.1-75-60-40-M12-37-70](#) [DVC.2-30-22-20-M8-20-55](#) [DVC.2-40-30-25-M8-23-55](#) [DVC.2-75-60-40-M12-37-55](#) [DVC.2-21-16-22-M6-18-40](#) [DVC.2-40-20-48-M8-23-40](#) [DVC.2-40-32-50-M8-23-40](#) [DVC.2-20-14-19-M6-18-70](#) [DVC.2-25-18-20-M6-18-70](#) [DVC.3-20-14-20-M6-40](#) [DVC.3-20-14-30-M6-40](#)