

PART
NAME

NEMA 4X CABLE GLAND

PART
No.

NG-9511 TO NG-9517

REV.
DATE

12-14-15

PART NO.	MOUNT THREAD	CABLE RANGE (DIAMETER)	MOUNTING HOLE SIZE (DIAMETER)	RECOMMENDED TORQUE FOR ASSEMBLING
NG-9511	PG-7	0.118 [3] - 0.169 [4.3]	0.492 [12.5] - 0.504 [12.8]	18 IN./LB. [2 N-m]
NG-9512	PG-9	0.157 [4] - 0.252 [6.4]	0.598 [15.2] - 0.610 [15.5]	27 IN./LB. [3 N-m]
NG-9513	PG-11	0.197 [5] - 0.295 [7.5]	0.732 [18.6] - 0.744 [18.9]	35 IN./LB. [4 N-m]
NG-9514	PG-13.5	0.236 [6] - 0.433 [11]	0.803 [20.4] - 0.815 [20.7]	40 IN./LB. [4.5 N-m]
NG-9515	PG-16	0.394 [10] - 0.512 [13]	0.886 [22.5] - 0.898 [22.8]	44 IN./LB. [5 N-m]
NG-9516	PG-21	0.512 [13] - 0.669 [17]	1.114 [28.3] - 1.130 [28.7]	44-46 IN./LB. [5-7.5 N-m]
NG-9517	PG-29	0.709 [18] - 0.945 [24]	1.457 [37] - 1.472 [37.4]	44-66 IN./LB. [5-7.5 N-m]

MATERIAL:

CABLE NUT, BODY & NUT - NYLON -66, UL94V-2, IP-68
CABLE SEAL & WASHER GASKET - NBR (N) RUBBER

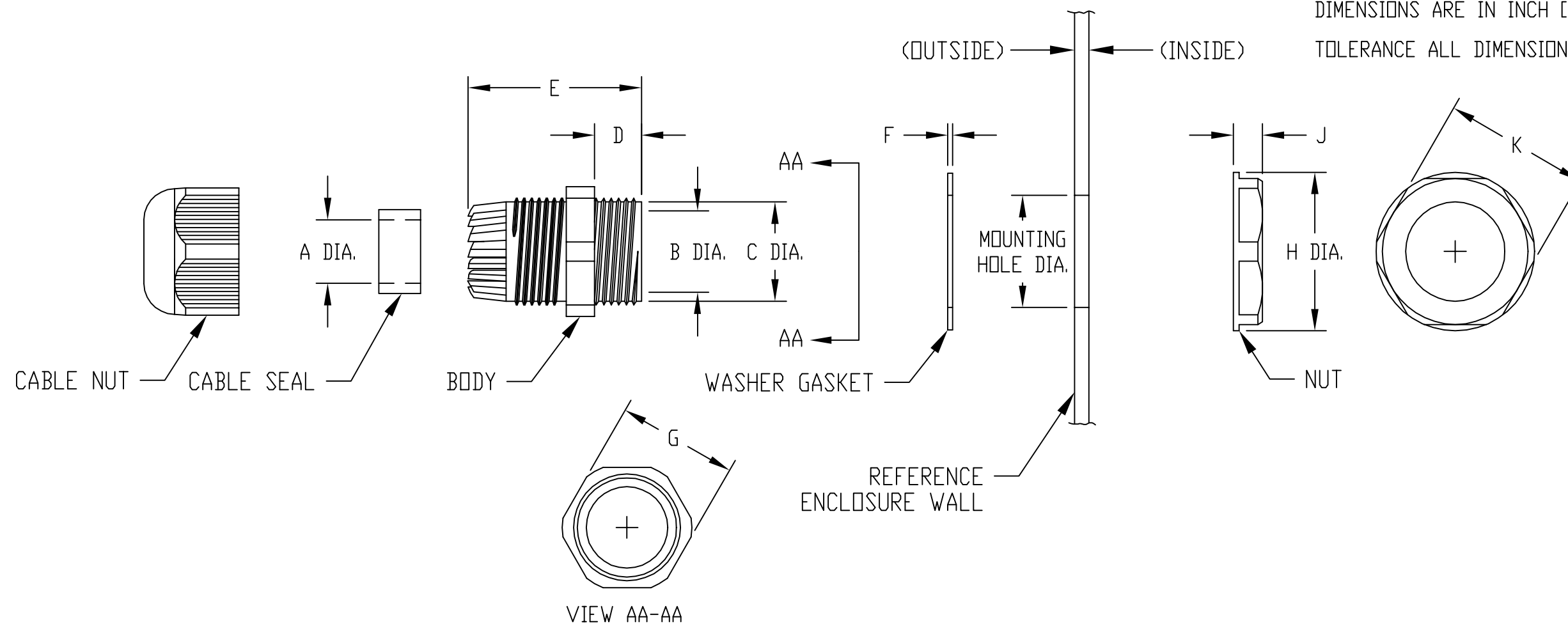
COLOR:

CABLE NUT, BODY & NUT - BLACK
CABLE SEAL & WASHER GASKET - BLACK

OPERATING TEMPERATURE: -40°F. TO 221°F. [-40°C. TO 105°C.]

DIMENSIONS ARE IN INCH [MILLIMETER]

TOLERANCE ALL DIMENSIONS: ±0.008 [±0.2]



PART NO.	DIMENSIONS									
	A	B	C	D	E	F	G	H	J	K
NG-9511	0.150 [3.8]	0.315 [8]	0.488 [12.4]	0.315 [8]	1.102 [28]	0.039 [1]	0.591 [15]	0.827 [21]	0.209 [5.3]	0.748 [19]
NG-9512	0.230 [5.8]	0.374 [9.5]	0.563 [14.3]	0.323 [8.2]	1.169 [29.7]	0.056 [1.4]	0.709 [18]	0.921 [23.4]	0.201 [5.1]	0.826 [21]
NG-9513	0.285 [7.2]	0.512 [13]	0.717 [18.2]	0.323 [8.2]	1.236 [31.4]	0.058 [1.5]	0.866 [22]	1.047 [26.6]	0.205 [5.2]	0.945 [24]
NG-9514	0.380 [9.6]	0.591 [15]	0.787 [20]	0.371 [9.4]	1.315 [33.4]	0.062 [1.6]	0.945 [24]	1.161 [29.5]	0.244 [6.2]	1.063 [27]
NG-9515	0.500 [12.7]	0.669 [17]	0.878 [22.3]	0.382 [9.7]	1.425 [36.2]	0.062 [1.6]	1.063 [27]	1.303 [33.1]	0.250 [6.4]	1.181 [30]
NG-9516	0.640 [16.2]	0.866 [22]	1.102 [28]	0.425 [10.8]	1.583 [40.2]	0.062 [1.6]	1.260 [32]	1.551 [39.4]	0.287 [7.3]	1.417 [36]
NG-9517	0.890 [22.6]	1.181 [30]	1.449 [36.8]	0.433 [11]	1.772 [45]	0.062 [1.6]	1.614 [41]	1.972 [50]	0.315 [8]	1.811 [46]

X-ON Electronics

Largest Supplier of Electrical and Electronic Components

Click to view similar products for [Screws & Fasteners](#) category:

Click to view products by [Bud Industries](#) manufacturer:

Other Similar products are found below :

[5721-1440-1/4-SS](#) [593503FX](#) [0098.0094](#) [0098.9206](#) [0098.9219](#) [0098.9262](#) [596-2114-013](#) [59781-6](#) [0098.0026](#) [0098.9210](#) [0098.9212](#) [60227-01](#) [60227-04](#) [60227-08](#) [60687-01](#) [LOCK WASHER Black](#) [618-00001](#) [62153-03](#) [62153-11](#) [M316-KSSTMCZ100](#) [M3440-SS](#) [M3442-SS](#) [M3448-SS](#) [6292-1](#) [6-306105-9](#) [6-306131-4](#) [690432-1](#) [699161-000](#) [7230-3](#) [7244](#) [7248-1](#) [7248-2](#) [73542-02](#) [CAPTIVE SHORT THUMBSCREW](#) [745564-1](#) [F1209](#) [751-00001](#) [7680](#) [809704-1](#) [8700](#) [8860220](#) [9047](#) [9521](#) [992326-6](#) [992763-3](#) [1-18024-0](#) [1-18028-2](#) [A168P1](#) [A495P1](#) [1-24921-1](#) [125416-1](#) [1260](#)