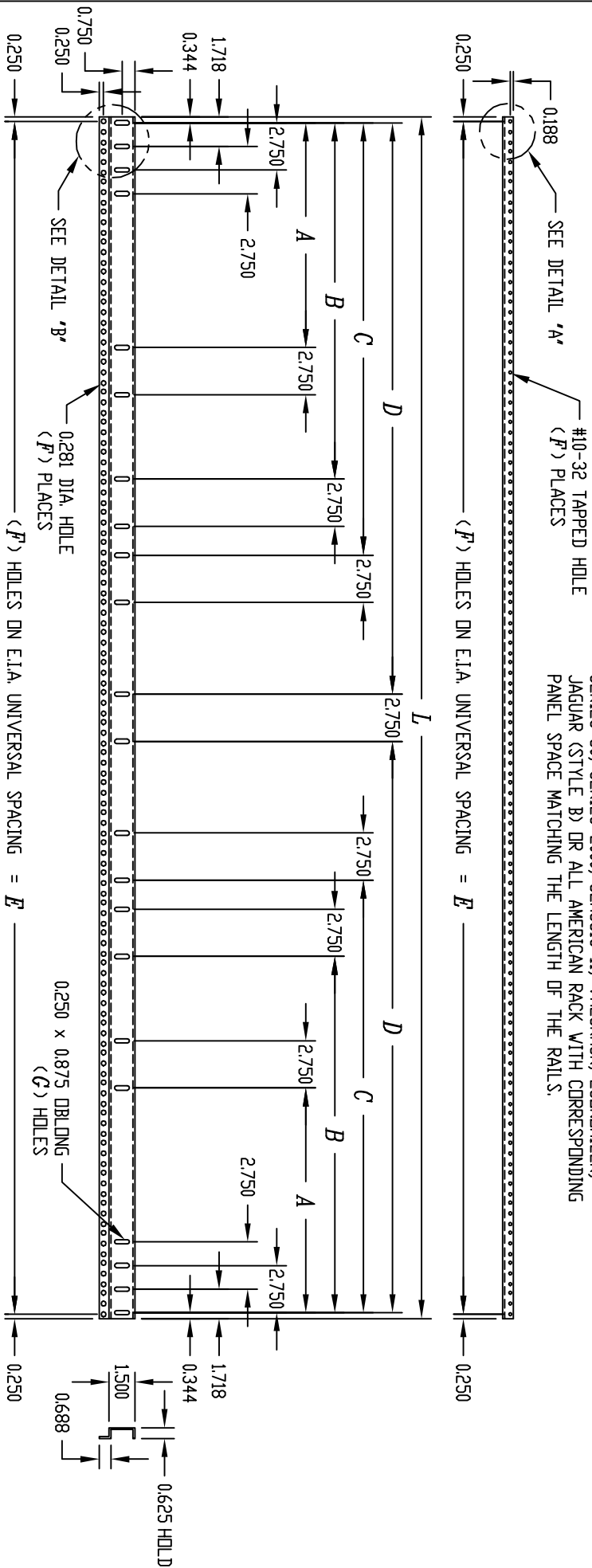


PART NAME: PANEL MOUNTING RAIL PART No.: PMR-9448 TD PMR-9454 / PMR-2002 / PMR-2331 / PMR-9306 / PMR-14315

MATERIAL: 12 GA. STEEL
FINISH: SMOOTH BLACK

NOTE: PANEL MOUNTING RAIL LISTED MAY BE USED ON EITHER
SERIES 60, SERIES 2000, CLASSIC II, VALURACK, ECONDMIZER,
JAGUAR (STYLE B) OR ALL AMERICAN RACK WITH CORRESPONDING
PANEL SPACE MATCHING THE LENGTH OF THE RAILS.



| CATALOG No. | L | A | B | C | D | E | F | G |
|-------------|--------|--------|--------|--------|--------|--------|-----|----|
| PMR-9448 | 21.000 | --- | --- | --- | --- | 20.500 | 36 | 8 |
| PMR-2331 | 24.500 | --- | --- | --- | --- | 24.000 | 42 | 8 |
| PMR-14315 | 28.000 | --- | --- | --- | --- | 27.500 | 48 | 8 |
| PMR-9449 | 31.500 | --- | --- | --- | --- | 31.000 | 54 | 8 |
| PMR-2002 | 35.000 | --- | --- | --- | --- | 34.500 | 60 | 8 |
| PMR-9450 | 42.000 | 10.188 | --- | --- | 19.281 | 41.500 | 72 | 14 |
| PMR-9451 | 52.500 | 15.438 | --- | --- | 24.531 | 52.000 | 90 | 14 |
| PMR-9452 | 61.250 | 13.094 | --- | --- | 28.906 | 60.750 | 105 | 14 |
| PMR-9453 | 70.000 | 15.281 | --- | --- | 33.281 | 69.500 | 120 | 14 |
| PMR-9306 | 77.000 | 17.016 | --- | --- | --- | 76.500 | 132 | 14 |
| PMR-9454 | 78.750 | 13.375 | 25.125 | 29.563 | 37.656 | 78.250 | 135 | 22 |

X-ON Electronics

Largest Supplier of Electrical and Electronic Components

Click to view similar products for [Racks & Rack Cabinet Accessories](#) category:

Click to view products by [Bud Industries](#) manufacturer:

Other Similar products are found below :

[CR-1727](#) [M00-PLN](#) [F2420](#) [F2424](#) [8310-1032-SS](#) [9104](#) [PLFF2000](#) [PLFF6000](#) [GP216](#) [PTFA60000LG](#) [H-9163-B](#) [HEH050BA](#) [1427C3](#)
[BAS-5104](#) [N-700-2](#) [190-002](#) [HTL10](#) [HTS10](#) [PC-118](#) [PC-780L](#) [PC-79](#) [PC-800](#) [SC4-28](#) [F3024](#) [AKWAMT](#) [PLFF1000](#) [GRPB12PG](#) [CG3-](#)
[340S/12](#) [2CWDP36](#) [2CWDP48](#) [2SSHINGE](#) [CP-001BK](#) [CPL19431LG1](#) [R570-004-107](#) [M6123-4007-SS](#) [TS170](#) [531300535](#) [BRX-12290](#)
[C4BD3077SBK1](#) [UPS 7-17-14 PLAIN](#) [LP40](#) [5261304-07](#) [CCA26-44-01](#) [706-102](#) [CG3-160G](#) [7112C-PLN ALUM](#) [CM10](#) [TS81](#) [7142](#)
[GP134](#)