

PART NAME

NEMA 4X ENCLOSURE

PART No.

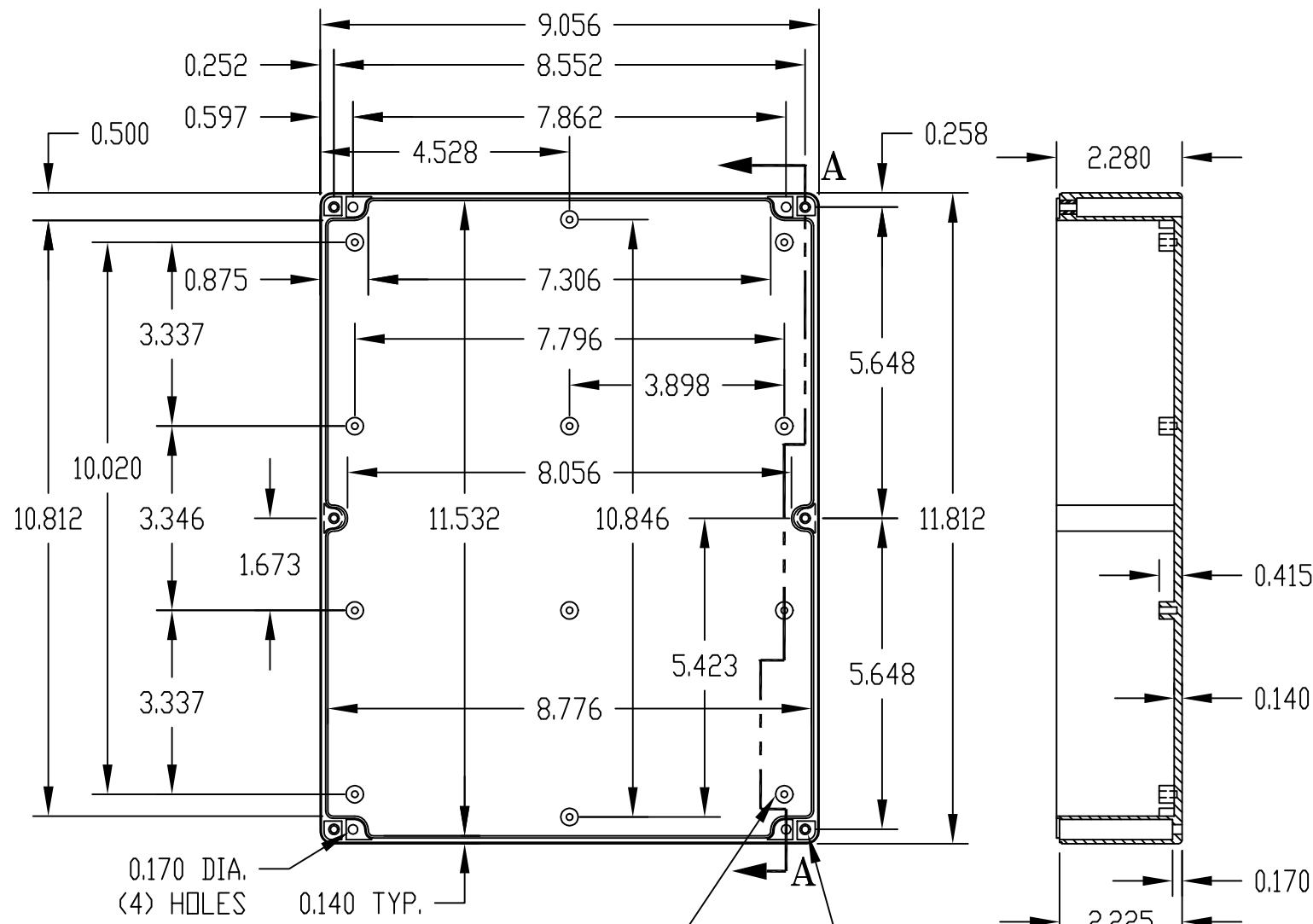
PN-1343, PN-1343-C AND PN-1343-DG

REV. DATE

11-17-08

INDUSTRY STANDARDS:

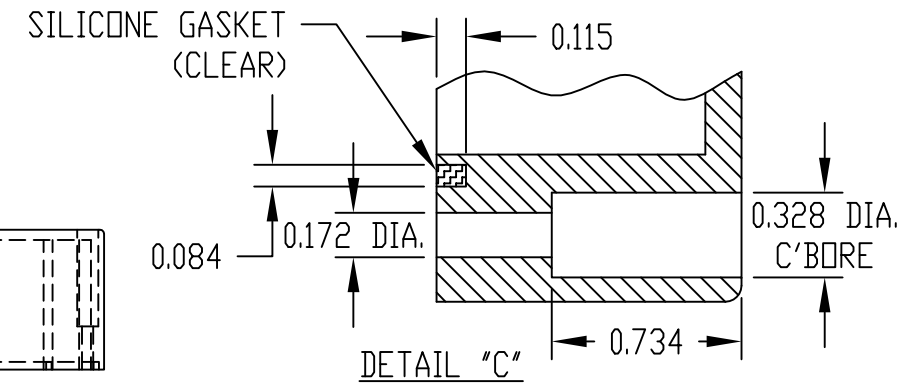
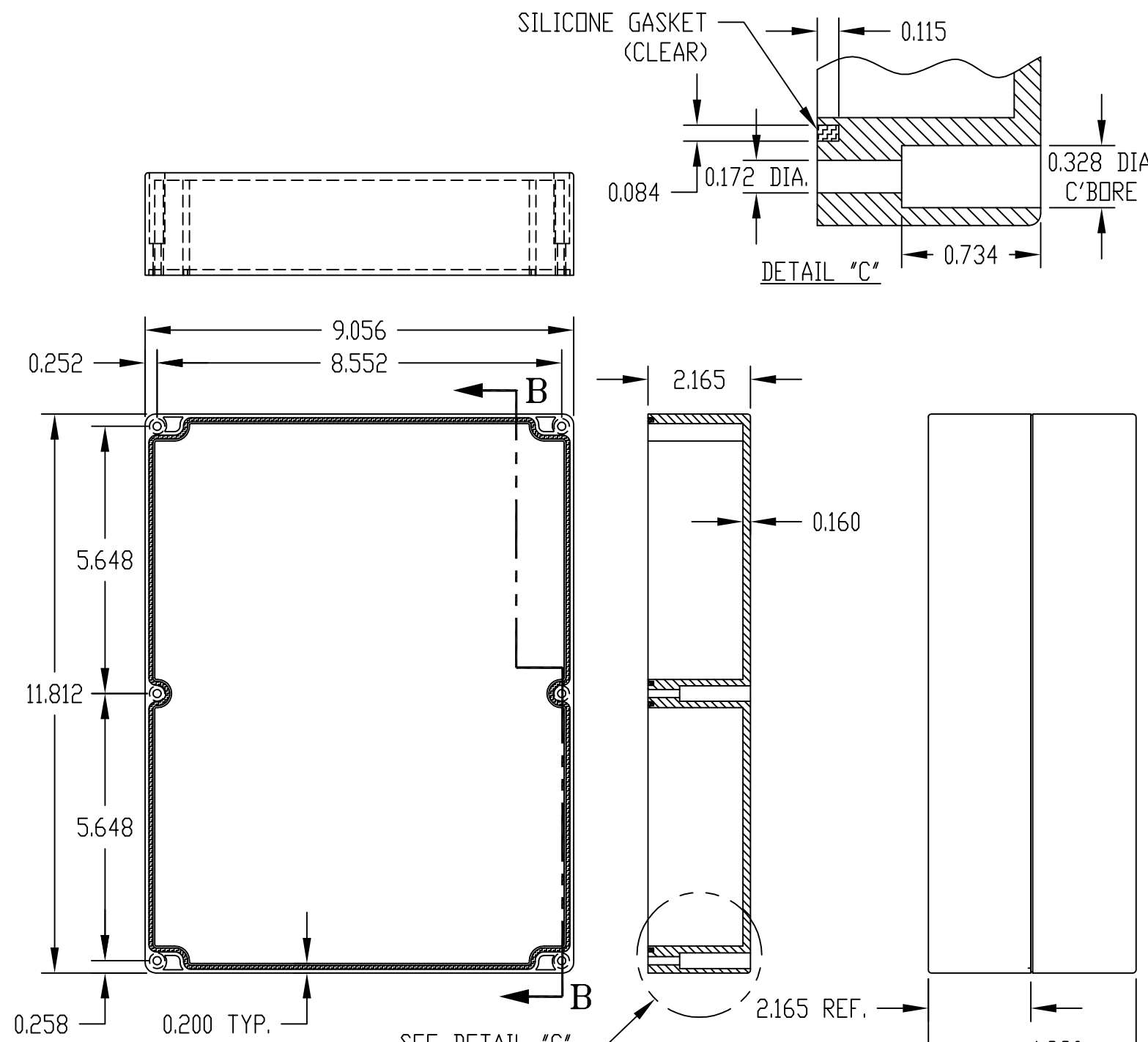
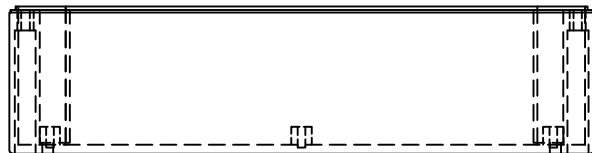
POLYCARBONATE (LIGHT GRAY AND CLEAR)
 UL94-HB FLAMMABILITY RATING (UL FILE #E41613)
 UV STABILIZED
 SERVICE TEMPERATURE RANGE: -40°C TO +120°C
 ABS (DARK GRAY)
 UL94-HB FLAMMABILITY RATING (ULFILE #E560700)
 SERVICE TEMPERATURE RANGE: -40°C TO +80°C



0.315 DIA. BOSS WITH
 0.120 DIA. HOLE x 0.320 DEEP
 (12) PLACES
 MOUNTING BOSSES USE EITHER
 M3 METRIC OR #6 STD. SHEET
 METAL SCREWS x 0.312 LG.
 (NOT SUPPLIED)

M4 x 0.315 LG.
 THREADED INSERT
 (6) PLACES

BODY



COVER

SECTION "B-B"

NOTE: ALL DIMENSIONS HAVE ±0.015 TOLERANCE UNLESS OTHERWISE SPECIFIED.

| PART NUMBER | MATERIAL | | FINISH | | HARDWARE KIT |
|-------------|-----------------|-------|------------|-------|---|
| | BODY | COVER | BODY | COVER | |
| PN-1343 | POLYCARBONATE | | LIGHT GRAY | | KIT CONTAINS (6) M4 x 25mm (1.000") LG. SCREWS FOR ASSEMBLY |
| PN-1343-C | POLYCARBONATE | | LIGHT GRAY | CLEAR | |
| PN-1343-DG | HIGH-IMPACT ABS | | DARK GRAY | | |

X-ON Electronics

Largest Supplier of Electrical and Electronic Components

Click to view similar products for [Electrical Enclosures](#) category:

Click to view products by [Bud Industries](#) manufacturer:

Other Similar products are found below :

[120-401](#) [120-905](#) [120-909](#) [120-403](#) [130-004](#) [MR-25L+](#) [30-8739](#) [PIP-11774SCREW](#) [30-9715](#) [30-9777-BU](#) [105-905](#) [110-902](#) [110-901](#)
[A16N12BLP](#) [110-406](#) [110-401](#) [110-404](#) [120-405](#) [34861601](#) [106-009](#) [106-505](#) [105-405](#) [111-005](#) [127-909](#) [106-502](#) [130-503](#) [127-455](#)
[9511150](#) [9511017](#) [9820011](#) [NSYTDB5PL](#) [137-455](#) [130-001](#) [105-904](#) [120-404](#) [137-005](#) [130-505](#) [127-406](#) [AB 1,5.0](#) [AB2.0](#) [ABM.0](#)
[73345601](#) [F-MP](#) [H-MP](#) [M-MP](#) [PAT 12040](#) [2461000](#) [9121230](#) [79541301](#) [19001001](#)