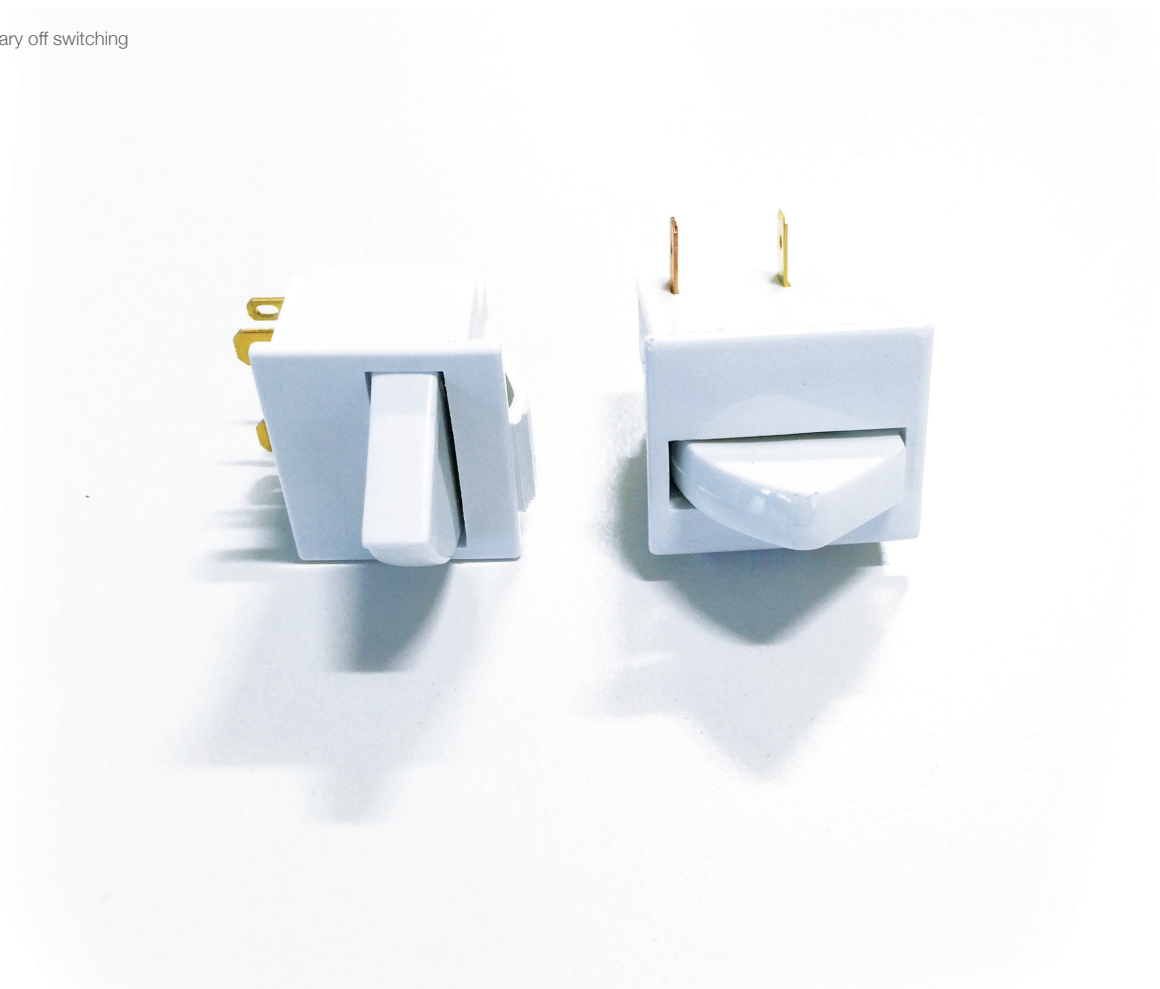


Long recognised as a leader in refrigerator door switches, Bulgin's wide range of types and configurations will suit almost any need. With both double pole and single pole options, our switches are not only ideal for traditional refrigerator and freezer applications but can and have been used in a variety of door applications as well.

- Door switches
- Switch rating from 0.2A, 250V ac up to 5A, 250Vac
- Splash resistant variants
- Choice of actuators
- Momentary on and momentary off switching



# 0055 Door Switches



## Key Features

- Ratings up to 0.2A, 250V ac
- High temperature rating up to 125°C
- Long overtravel
- Choice of terminal orientation

## Approvals and specifications

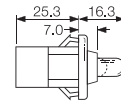
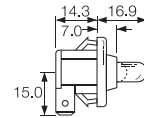
☑ 0055 & 0056  
0.2(0.2)A 250Vac 25T125 5E4  
(50,000 operations)

μ contact gap

## Dimensions and Properties

C0055RB

C0056RB



| Terminal                       | Function  | Actuator        | Body  | Options |           |      |           |   |
|--------------------------------|---|-----------------|---|---------|-----------|------|-----------|---|
| <p><b>C</b></p> <p>6.3x0.8</p> | <p><b>0055</b></p> <p>ON - OFF<br/>(momentary OFF)<br/>90° terminals</p>      | <p><b>R</b></p> | <p><b>B</b></p> <p>Panel cut - out</p> <p>Panel thickness</p> <table border="1"> <tr> <td>0055</td> <td>1.0 - 1.6</td> </tr> <tr> <td>0056</td> <td>1.0 - 2.6</td> </tr> </table> <p>Flange</p> | 0055    | 1.0 - 1.6 | 0056 | 1.0 - 2.6 | <p><b>Finish</b><br/>Gloss finish only</p> <p><b>Colour</b><br/>White or black<br/>Call sales for custom colours.</p> |
| 0055                           | 1.0 - 1.6   |                 |   |         |           |      |           |   |
| 0056                           | 1.0 - 2.6   |                 |   |         |           |      |           |   |
| <p><b>H</b></p> <p>4.8x0.8</p> | <p><b>0056</b></p> <p>ON - OFF<br/>(momentary OFF)<br/>straight terminals</p> |                 |   |         |           |      |           |   |

# 3005 Refrigerator Door Switches

Splash Resistant



C3005BL ---

C3005CB ---

## Key Features

- Door switches
- Momentary on and momentary off switching
- Splash resistant
- Choice of terminal orientation
- Choice of actuators

## Approvals and specifications

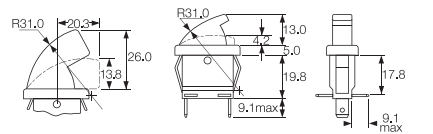
3005 25W 25T85 5E4 (50,000 Operations) 250Vac  
 3006 65W 25T85 5E4 (50,000 Operations) 250Vac

UL 0.3A 250Vac (Black Versions Only)  
 UL 0.2A 125Vac (Black Versions Only)

μ contact gap

## Dimensions and Properties

3005



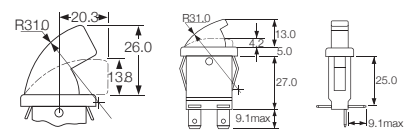
Panel thickness 1.0 - 2.5mm

B Actuator

C Actuator

R, L & B terminals

3006



Panel thickness 1.0 - 2.5mm

B Actuator

C Actuator

R, L & B terminals

| Terminal                       | Function  | Actuator                    | Body   | Options   |
|--------------------------------|---|-----------------------------|--|---|
| <p><b>C</b></p> <p>6.3x0.8</p> | <p><b>3005</b></p> <p>ON - OFF<br/>(momentary OFF)<br/>1mm max travel<br/>to OFF position</p> | <p><b>B</b></p> <p>26.0</p> | <p><b>R L B</b></p> <p>Terminal direction<br/>(viewed from hinge end)</p> <p>Panel cut - out    Bezel    Bezel Profile</p> | <p><b>Finish</b><br/>Gloss finish only</p> <p><b>Colour</b><br/>White or black<br/>Call sales for custom colours.<br/>A full range is available for large orders.</p> |
| <p><b>H</b></p> <p>4.8x0.8</p> | <p><b>3006</b></p> <p>ON - OFF<br/>(momentary ON)<br/>3mm min travel<br/>to ON position</p>   | <p><b>C</b></p> <p>13.0</p> | <p><b>R L B</b></p> <p>Terminal direction<br/>(viewed from hinge end)</p> <p>Panel cut - out    Bezel    Bezel Profile</p> | <p><b>Finish</b><br/>Gloss finish only</p> <p><b>Colour</b><br/>White or black<br/>Call sales for custom colours.<br/>A full range is available for large orders.</p> |

# 3100 Refrigerator Door Switches

Splash resistant



E3111BA ---



E3102AA ---

## Key Features

- Door switches
- Ratings up to 5A, 250V ac
- Splash resistant
- Changeover, momentary ON and momentary OFF
- Choice of actuators

## Approvals and specifications

5A 250Vac 25T85 5E4 (50,000 Operations)

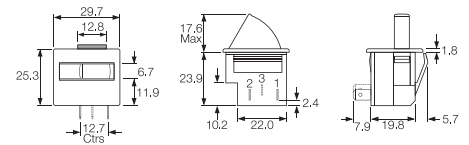
UL CSA 5A 250Vac  
UL 85°C, file E45221, CSA file LR10990

μ contact gap.  
Sealed terminals option available.

## Dimensions and Properties

3101 uses terminals 1,2  
3102 uses terminals 1,2  
3111 uses terminals 1,2,3

For details of actuator travel and switching angles call sales.



| Terminal                          | Function   | Actuator                 | Body         | Colour            | Options  |
|-----------------------------------|--|--------------------------|--------------|-------------------|--|
| <b>E</b><br><br>4.8x0.5 QC<br>7.9 | <br><b>3101</b><br><br>ON - OFF<br>(momentary OFF) | <b>A</b><br><br>17.6 max | <b>A</b><br> | <b>W</b><br>White | <b>Options</b><br>Finish<br>Gloss finish only<br><br>Colour<br>White or black<br>Call sales for custom colours.<br>A full range is available for large orders. |
|                                   | <b>3102</b><br><br>ON - OFF<br>(momentary OFF)     | <b>B</b><br><br>15.6 max |              |                   |  |
|                                   | <b>3102</b><br><br>ON - OFF<br>(momentary OFF)     | <b>C</b><br><br>23.0 max |              |                   |  |
|                                   | <b>3111</b><br><br>ON - ON<br>(momentary 1 side)   | <b>D</b><br><br>17.1 max |              |                   |  |

# 3140 Refrigerator Door Switches

Splash resistant



HK3141AA ---



H3145AA ---

## Key Features

- Door switches
- Ratings up to 5A, 250V ac
- Splash resistant
- Momentary action
- Choice of actuators
- 2 circuit switch

## Approvals and specifications

5A 250Vac 25T85 5E4 (50,000 Operations)

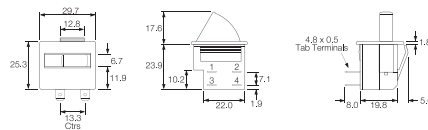
UL CSA 5A 250Vac  
UL 85°C, file E45221, CSA file LR10990

3141,  $\mu$  contact gap.  
3145 and 3146, 3mm contact gap.

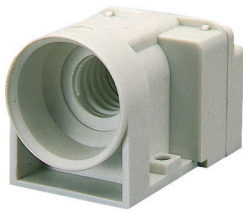
Sealed terminals option available.

## Dimensions and Properties

3141 uses terminals  
1,2,3,4  
3145 uses terminals 3,4  
3146 uses terminals 1,2



| Terminal  | Function   | Actuator  | Body  | Colour  | Options  |
|---|--|---|---|---|--|
| <p><b>H</b></p> <p>4.8x0.8</p>  | <p><b>3141</b></p> <p>ON - OFF<br/>(momentary)</p>     | <p><b>A</b></p> <p><b>B</b></p> <p><b>C</b></p> <p><b>D</b></p> | <p><b>A</b></p> <p>Optional cut-out for orientation</p> | <p><b>W</b></p> <p>White</p> <p><b>B</b></p> <p>Black</p> <p><b>PW</b></p> <p>Polar White</p> | <p><b>Finish</b><br/>Gloss finish only</p> <p><b>Colour</b><br/>White or black<br/>Call sales for custom colours.<br/>A full range is available for large orders.</p> <p><b>Order as:</b><br/>3151 (3141 type)<br/>3155 (3145 type)<br/>3156 (3146 type)</p> |
| <p><b>K</b></p> <p>2.8x0.8</p>  | <p><b>3145</b></p> <p>ON - OFF<br/>(momentary OFF)</p> |   |   |   |  |
| <p>Standard format is H terminals in positions 1 &amp; 2 and K terminals in positions 3 &amp; 4<br/>For sealed terminals call sales</p> | <p><b>3146</b></p> <p>ON - ON<br/>(momentary ON)</p>   |   |   |   |  |



C0305RT ---  
C0305LT ---

## Key Features

- E12 and E14 lamps
- Switch rating up to 0.06A, 250V ac
- Auto switching
- Mercury free
- Available with right or left hand orientation
- Available as lampholder only

## Approvals and specifications

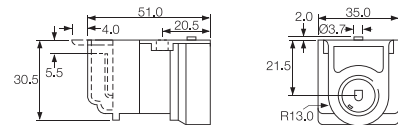
0.06A 250Vac 25 T 85 (0305 only)

UL 15W 125/250Vac (0305 only)  
UL 65°C, file E116391 (0305 only)

Switched units have  $\mu$  contact gap.

## Dimensions and Properties

The mechanism of this switch/lampholder does not contain mercury and may be safely used in food storage equipment. When fitted to the lid of a freezer storage cabinet, the switch will operate the lamp when the lid is opened to the angle of tilt shown in the drawing.



| Terminal                       | Function   | Mounting  | Body  | Options   |
|--------------------------------|--|---|---|---|
| <p><b>C</b></p> <p>6.3x0.8</p> | <p><b>0305 (E14)</b></p> <p>ON - OFF Switch and Lampholder</p> | <p><b>L</b></p> <p>(View from the bulb end)</p> <p>For Left hinged lid for 0305/0306 switches, not for 0307 lampholder</p> <p>25° min</p> | <p><b>T</b></p> <p>Body without flange for 0305/0306 switches</p>                           | <p><b>Colour</b></p> <p>Call sales for colours. A full range is available for large orders.</p> |
| <p><b>H</b></p> <p>4.8x0.8</p> | <p><b>0306 (E12)</b></p> <p>Lampholder only (No Switch)</p>    | <p><b>R</b></p> <p>(View from the bulb end)</p> <p>For Right hinged lid for 0307 lampholder or 0305/0306 switches</p> <p>25° min</p>      | <p><b>S</b></p> <p>Body with rear flange for 0307 lampholder and for 0305/0306 switches</p> |   |

## X-ON Electronics

Largest Supplier of Electrical and Electronic Components

*Click to view similar products for [Limit Switches](#) category:*

*Click to view products by [Bulgin](#) manufacturer:*

Other Similar products are found below :

[LZG1](#) [LZL1-6C](#) [622EN114-R](#) [622EN18-6](#) [622EN224-6B](#) [622EN230](#) [622EN237-R](#) [622EN69-3](#) [622EN85-RB](#) [MA-10019](#) [6PA109](#) [7LS51](#)  
[83547001](#) [83725002](#) [83840001](#) [83840701](#) [83881130](#) [8AS42](#) [8LS125-4PG](#) [8LS152-4PGN20](#) [914CE3-3L1](#) [915PA10](#) [91MCE16-P2O](#)  
[924CE1-T25A](#) [924CE1-T3](#) [924CE1-T9A](#) [924CE31-Y20-X5](#) [924CE31-Y3L1](#) [GL-10054](#) [GL-85714](#) [GLDB03C-6](#) [GLZ324](#) [PS21R-NT11N7-](#)  
[YK0](#) [H3141CAKAA](#) [D4GS-N1T-3](#) [RDI-G-L5B](#) [14CE16-3N28](#) [E3102BAAAA](#) [BFL1-AW1-S](#) [1LS-J50](#) [1LS-J51](#) [201SN1A1](#) [21EN275-R2](#)  
[21EN314-6](#) [21EN90-R1](#) [221CH54-RB](#) [221EN5-R](#) [8PA2](#) [914CE16-6AN14](#) [914CE2-9L1](#)