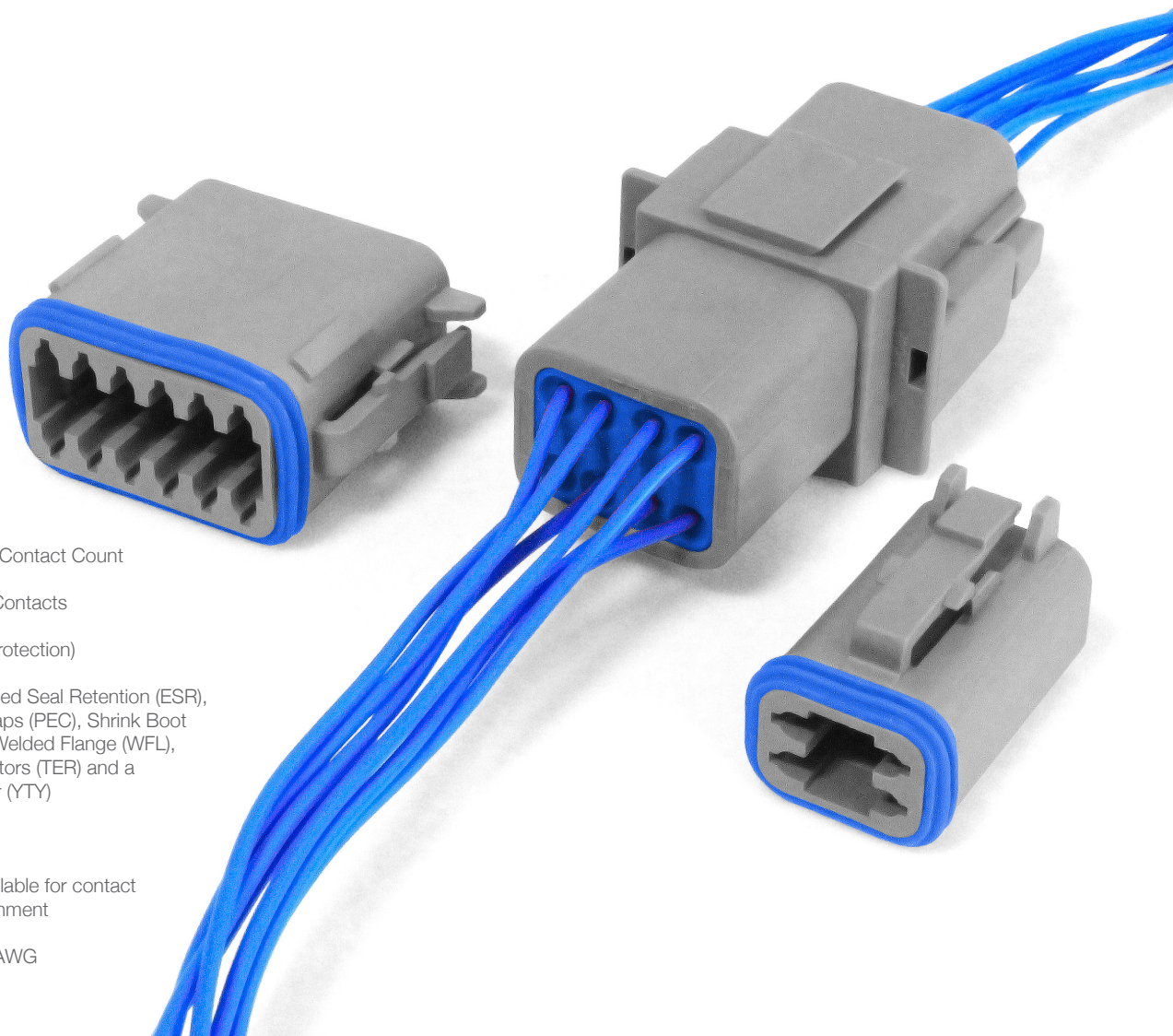


The Bulgin Rectangular Power Connector range offers a reliable, rugged solution for cable to cable applications in harsh environments with its environmentally sealed range of products.

The series has a male and female option, as well as modifications such as enhanced seal retention, protective end caps, shrink boot adapters, welded flange, terminating resistors and a Y-Type connector for the automotive industry.

Key Features:

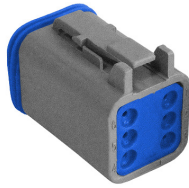
- 2, 3, 4, 6, 8 & 12 Contact Count
- Accepts size 16 Contacts
- IP68 (with Rear Protection)
- Choice of Enhanced Seal Retention (ESR), Protective End Caps (PEC), Shrink Boot Adapters (SBA), Welded Flange (WFL), Terminating Resistors (TER) and a Y-Type Connector (YTY)
- Rated to 13A
- Wedge-locks available for contact retention and alignment
- Accepts 14 - 20 AWG



RECTANGULAR Standard Rectangular Connectors

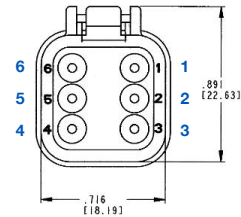


Standard Rectangular Connectors
Male



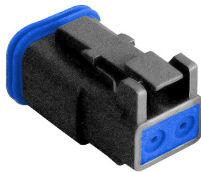
PX0100

- 2, 3, 4, 6, 8 & 12 Contacts
- Male housing
- Socket contacts
- Available in Grey and Black
- Additional options available



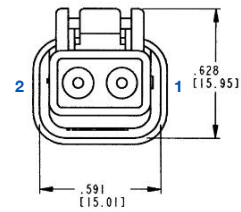
Part Number	Contacts	Key	Termination	Colour	Additional
PX0100S02BK	2	-	Crimp	Black	-
PX0100S02GY	2	-	Crimp	Grey	-
PX0100S03BK	3	-	Crimp	Black	-
PX0100S03GY	3	-	Crimp	Grey	-
PX0100S04BK	4	-	Crimp	Black	-
PX0100S04GY	4	-	Crimp	Grey	-
PX0100S06BK	6	-	Crimp	Black	-
PX0100S06GY	6	-	Crimp	Grey	-
PX0100S08AGY	8	A	Crimp	Grey	-
PX0100S12AGY	12	A	Crimp	Grey	-

Standard Rectangular Connectors
Male - ESR



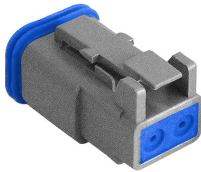
PX0102

- 2 Contacts
- Male housing
- Enhanced seal retention
- Socket contacts
- Available in Black
- Additional options available



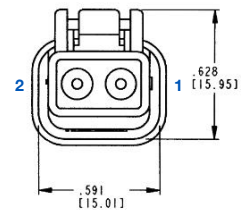
Part Number	Contacts	Key	Termination	Colour	Additional
PX0102S02BK	2	-	Crimp	Black	ESR

Standard Rectangular Connectors
Male - ESR & PEC



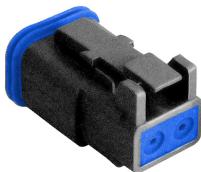
PX0103

- 2 Contacts
- Male housing
- Enhanced seal retention & protective end cap
- Socket contacts
- Available in Grey
- Additional options available



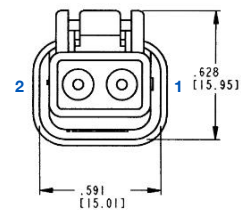
Part Number	Contacts	Key	Termination	Colour	Additional
PX0103S02GY	2	-	Crimp	Grey	ESR & PEC

Standard Rectangular Connectors
Male - ESR & SBA



PX0104

- 2 Contacts
- Male housing
- Enhanced seal retention & shrink boot adapter
- Socket contacts
- Available in Black
- Additional options available



Part Number	Contacts	Key	Termination	Colour	Additional
PX0104S02BK	2	-	Crimp	Black	ESR & SBA

RECTANGULAR Standard Rectangular Connectors

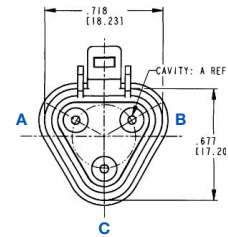


Standard Rectangular Connectors
Male - PEC



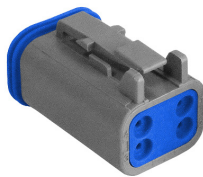
PX0105

- 2, 3, 4, 6, 8 & 12 Contacts
- Male housing
- Protective end cap
- Socket contacts
- Available in Grey and Black
- Additional options available



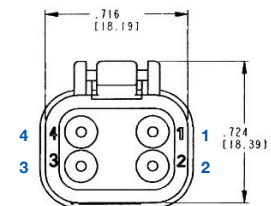
Part Number	Contacts	Key	Termination	Colour	Additional
PX0105S02BK	2	-	Crimp	Black	PEC
PX0105S02GY	2	-	Crimp	Grey	PEC
PX0105S03BK	3	-	Crimp	Black	PEC
PX0105S03GY	3	-	Crimp	Grey	PEC
PX0105S04BK	4	-	Crimp	Black	PEC
PX0105S04GY	4	-	Crimp	Grey	PEC
PX0105S06BK	6	-	Crimp	Black	PEC
PX0105S06GY	6	-	Crimp	Grey	PEC
PX0105S08ABK	8	A	Crimp	Black	PEC
PX0105S08AGY	8	A	Crimp	Grey	PEC
PX0105S12AGY	12	A	Crimp	Grey	PEC
PX0105S12ABK	12	A	Crimp	Black	PEC

Standard Rectangular Connectors
Male - SBA



PX0108

- 2, 3 & 4 Contacts
- Male housing
- Shrink boot adapter
- Socket contacts
- Available in Grey
- Additional options available



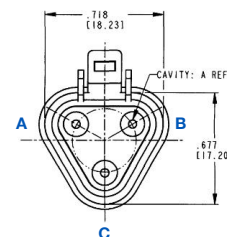
Part Number	Contacts	Key	Termination	Colour	Additional
PX0108S02GY	2	-	Crimp	Grey	SBA
PX0108S03GY	3	-	Crimp	Grey	SBA
PX0108S04GY	4	-	Crimp	Grey	SBA

Standard Rectangular Connectors
Male - TER



PX0110

- 3 Contacts
- Male housing
- Terminating resistor
- Socket contacts
- Available in Grey
- Additional options available



Part Number	Contacts	Key	Termination	Colour	Additional
PX0110S03GY	3	-	Crimp	Grey	TER

RECTANGULAR Standard Rectangular Connectors

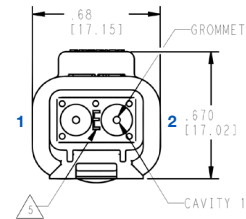


Standard Rectangular Connectors
Female



PX0101

- 2, 3, 4, 6, 8 & 12 Contacts
- Female Housing
- Plug contacts
- Available in Grey and Black
- Additional options available



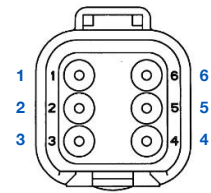
Part Number	Contacts	Key	Termination	Colour	Additional
PX0101P02BK	2	-	Crimp	Black	-
PX0101P02GY	2	-	Crimp	Grey	-
PX0101P03BK	3	-	Crimp	Black	-
PX0101P03GY	3	-	Crimp	Grey	-
PX0101P04BK	4	-	Crimp	Black	-
PX0101P04GY	4	-	Crimp	Grey	-
PX0101P06BK	6	-	Crimp	Black	-
PX0101P06GY	6	-	Crimp	Grey	-
PX0101P08ABK	8	A	Crimp	Black	-
PX0101P08AGY	8	A	Crimp	Grey	-
PX0101P12ABK	12	A	Crimp	Black	-
PX0101P12AGY	12	A	Crimp	Grey	-

Standard Rectangular Connectors
Female - PEC



PX0106

- 2, 3, 4, 6, 8 & 12 Contacts
- Female Housing
- Protective end cap
- Plug contacts
- Available in Grey and Black
- Additional options available



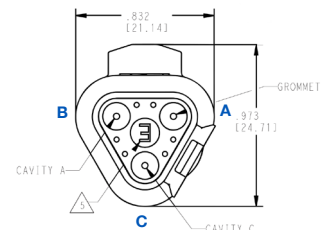
Part Number	Contacts	Key	Termination	Colour	Additional
PX0106P02BK	2	-	Crimp	Black	PEC
PX0106P02GY	2	-	Crimp	Grey	PEC
PX0106P03BK	3	-	Crimp	Black	PEC
PX0106P03GY	3	-	Crimp	Grey	PEC
PX0106P04BK	4	-	Crimp	Black	PEC
PX0106P04GY	4	-	Crimp	Grey	PEC
PX0106P06BK	6	-	Crimp	Black	PEC
PX0106P06GY	6	-	Crimp	Grey	PEC
PX0106P08ABK	8	A	Crimp	Black	PEC
PX0106P08AGY	8	A	Crimp	Grey	PEC
PX0106P12ABK	12	A	Crimp	Black	PEC
PX0106P12AGY	12	A	Crimp	Grey	PEC

Standard Rectangular Connectors
Female - PEC & SBA



PX0107

- 3 Contacts
- Female Housing
- Protective end cap & shrink boot adapter
- Plug contacts
- Available in Grey
- Additional options available



Part Number	Contacts	Key	Termination	Colour	Additional
PX0107P03GY	3	-	Crimp	Grey	PEC & SBA

RECTANGULAR Standard Rectangular Connectors

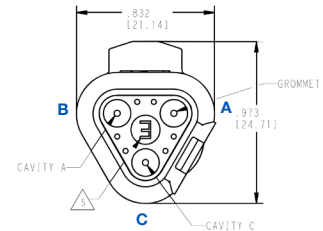


Standard Rectangular Connectors
Female - SBA



PX0109

- 2, 3 & 4 Contacts
- Female Housing
- Shrink boot adapter
- Plug contacts
- Available in Grey and Black
- Additional options available



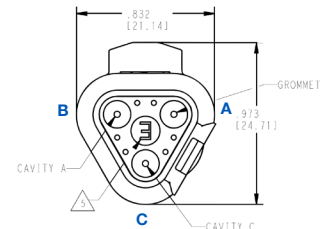
Part Number	Contacts	Key	Termination	Colour	Additional
PX0109P02BK	2	-	Crimp	Black	SBA
PX0109P02GY	2	-	Crimp	Grey	SBA
PX0109P03BK	3	-	Crimp	Black	SBA
PX0109P04GY	4	-	Crimp	Grey	SBA

Standard Rectangular Connectors
Female - TER



PX0111

- 3 Contacts
- Female Housing
- Terminating resistor
- Plug contacts
- Available in Grey
- Additional options available



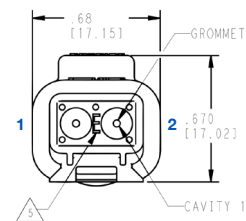
Part Number	Contacts	Key	Termination	Colour	Additional
PX0111P03GY	3	-	Crimp	Grey	TER

Standard Rectangular Connectors
Female - WFL



PX0112

- 2, 3, 4, 8 & 12 Contacts
- Female Housing
- Welded flange
- Plug contacts
- Available in Grey
- Additional options available



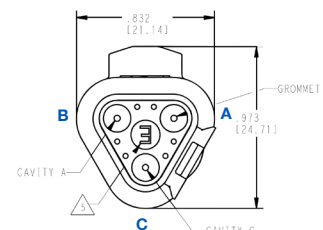
Part Number	Contacts	Key	Termination	Colour	Additional
PX0112P02GY	2	-	Crimp	Grey	WFL
PX0112P03GY	3	-	Crimp	Grey	WFL
PX0112P04GY	4	-	Crimp	Grey	WFL
PX0112P08AGY	8	A	Crimp	Grey	WFL
PX0112P12AGY	12	A	Crimp	Grey	WFL

Standard Rectangular Connectors
Female - YTY



PX0113

- 3 Contacts
- Female Housing
- Y-type connector
- Plug contacts
- Available in Grey
- Additional options available



Part Number	Contacts	Key	Termination	Colour	Additional
PX0113P03GY	3	-	Crimp	Grey	YTY

Contacts

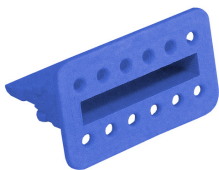


SA1000

- Crimp Plug & Sockets
- Choice of Gold and Nickel Plated
- Green Stripe available

Part Number	Plating	AWG	Type	Plug / Socket	Additional
SA1000/G	Nickel Plating	14	Solid	Plug	Green Stripe
SA1001/G	Nickel Plating	14	Solid	Socket	Green Stripe
SA1002/G	Nickel Plating	16 - 20	Solid	Plug	Green Stripe
SA1003/G	Nickel Plating	16 - 20	Solid	Socket	Green Stripe
SA1000	Nickel Plating	14	Solid	Plug	-
SA1001	Nickel Plating	14	Solid	Socket	-
SA1002	Nickel Plating	16 - 20	Solid	Plug	-
SA1003	Nickel Plating	16 - 20	Solid	Socket	-
SA1004	Nickel Plating	16 - 20	Stamped	Plug	Bandolier
SA1005	Nickel Plating	16 - 20	Stamped	Socket	Bandolier
SA1006	Nickel Plating	14, 16, 18	Stamped	Plug	Bandolier
SA1007	Nickel Plating	14, 16, 18	Stamped	Socket	Bandolier
SA1008	Gold Plating	14, 16, 18	Stamped	Plug	Bandolier
SA1009	Gold Plating	14, 16, 18	Stamped	Socket	Bandolier

Wedgelocks



WLP12

- Plug & Sockets available
- 2, 3, 4, 6, 8 & 12 Contact

* Wedgelocks are sold separately and are required for confirmation of alignment of contact. Please refer to the chart above to determine part required: e.g. WLP02 is required for 2 Contact female housings

Part Number	Contacts	Plug / Socket	Additional
WLP02	02	Plug	-
WLS02	02	Socket	-
WLS02ENS	02	Socket	Enhanced Seal
WLP03	03	Plug	-
WLS03	03	Socket	-
WLP04	04	Plug	-
WLS04	04	Socket	-
WLP06	06	Plug	-
WLS06	06	Socket	-
WLP08	08	Plug	-
WLS08	08	Socket	-
WLP12	12	Plug	-
WLS12	12	Socket	-

Tooling



- Crimp tooling available
- Probe extraction tool

Part Number	Additional
10000	Crimping tool for heavy duty Rectangular Connectors (series coming soon)
10001	Probe extraction tool
10002	Crimping tool for Rectangular Connectors

Electrical:

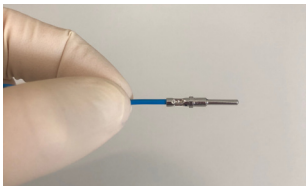
No Contacts: 2, 3, 4, 6, 8 & 12
 Current Rating: 13A
 Voltage Rating: 250V DC
 Insulation Resistance: >1000MΩ (@ 500V DC)
 Dielectric Strength: <2mA @ 15V AC
 Operating Temperature Range: -20°C to +150°C

Material

Body Mouldings: Polybutylene Terephthalate, Polyamide
 Glass Fiber
 Contacts: Copper Alloy Nickel Plated, Copper Alloy
 Gold Plated
 Rubber Seal: Silicone Rubber
 RoHS Compliant

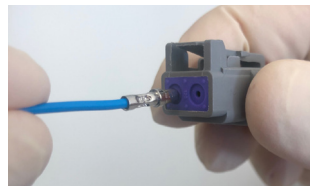
Contact Insertion Instructions

Step One:



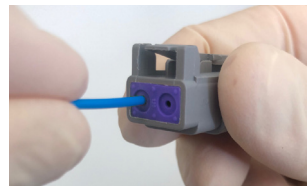
Use a previously crimped contact and wire and hold just behind the contact barrel.

Step Two:



Line the contact up with the grommet.

Step Three:



Push the contact until a click is felt. Check the contact is in place by gently tugging and confirming alignment. Repeat for number of contacts desired

Step Four:

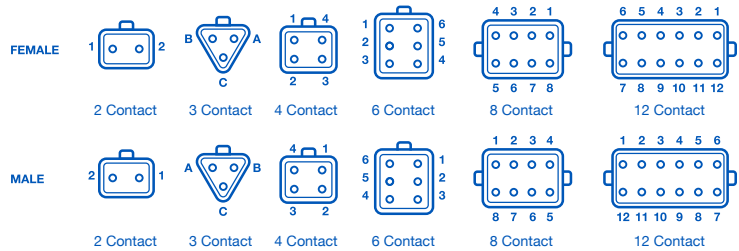


When contacts are in place, insert the appropriate wedgelock until a click is heard. Once male and female housings are prepared the parts can be mated

Mechanical:

Sealing: IP68 (with Rear Protection)
 Contact Accommodation: 14 - 20 AWG 2.5-0.35 mm²
 Termination: Crimp terminals
 Contact Retention: Size 16: 111N (25 lbs)
 Cycles: 100

Contact Layout (Rear View)



PX0	XXX	X	XX	X	XX
Range	Body Type	Contact Type	Contacts	Key	Colour
PX0	100 = Male 101 = Female 102 = Male Enhanced Seal Retention 103 = Male Enhanced Seal Retention & Protective End Cap 104 = Male Enhanced Seal Retention & Shrink Boot Adapter 105 = Male Protective End Cap 106 = Female Protective End Cap 107 = Female Protective End Cap & Shrink Boot Adapter 108 = Male Shrink Boot Adapter 109 = Female Shrink Boot Adapter 110 = Male Terminating Resistor 111 = Terminating Resistor 112 = Female Welded Flange 113 = Female Y Type	S = Socket P = Plug	02 03 04 06 08 12	A = A Key	GY = Grey BK = Black

X-ON Electronics

Largest Supplier of Electrical and Electronic Components

Click to view similar products for [Rectangular MIL Spec Connectors](#) category:

Click to view products by [Bulgin](#) manufacturer:

Other Similar products are found below :

[891-011-15SA2-BSST](#) [CTS-S16/16](#) [65002-062](#) [CY4602-000](#) [732-8020-01](#) [77058-22-55PN](#) [81542-20](#) [86.030.0053.0](#) [1241346-1](#) [RM252-020-311-2900](#) [DMC-M 08-16 SA](#) [1589051-4](#) [MSO34MPK1E1](#) [BACC65CAMA](#) [BACC65CP1PN](#) [BACI10BC0816PNBA](#) [HSB-D4S03DM222X](#) [2217548-1](#) [891-006-9PS-BST1T](#) [891-009-15SA2-BRT1T](#) [27963-20T12](#) [SIM2N40NC3](#) [SIM2S100A](#) [1604996-2](#) [SMD25PN90L-4055](#) [1900ND08S1B00A](#) [22628-10-6P-791](#) [RE04-212S](#) [M32139/03-G05SN](#) [CTD160E01F-6148](#) [CTJ112E03B](#) [CTJ122E02D-8000](#) [CTJ-3D-12](#) [CTJ920E06N-513](#) [CTJ920E12N-513](#) [CTL-16-090](#) [RM300-000-581-0000](#) [CY4600-000](#) [CY4601-000](#) [38111-14-15SN](#) [38112-14-15PN](#) [MMA23-0111R1](#) [MMD25-0071P1](#) [33516062020](#) [33526M11-08PE](#) [DMC-M99-01AN](#) [Y59113WE20PNV00300](#) [ZPF000000000106310](#) [105979-31](#) [EN4165M01AD0G0](#)