

Prototype circuit board with common connector footprints.

Features

- *BusBoard-3U-CONN* speeds assembly by providing footprints for common connectors plus a switch.
 - DB-9 - modular phone jack (2)
 - DB-25 - 1/8" sub-mini (2) or
 - SPDT switch mod. handset jack (2)
 - coaxial power connector
 - BNC connector (2)
- The *BusBoard* zig-zag circuit pattern keeps opposite sides of an integrated circuit or connector on separate tracks to simplify wiring.
- Narrow and wide tracks identify connected pads. Indicator holes show wide tracks.
- DIP ICs and headers can be connected pin-to-pin without cutting traces or adding wires. It's ideal for memory buses and it provides easy power and grounds for other ICs.

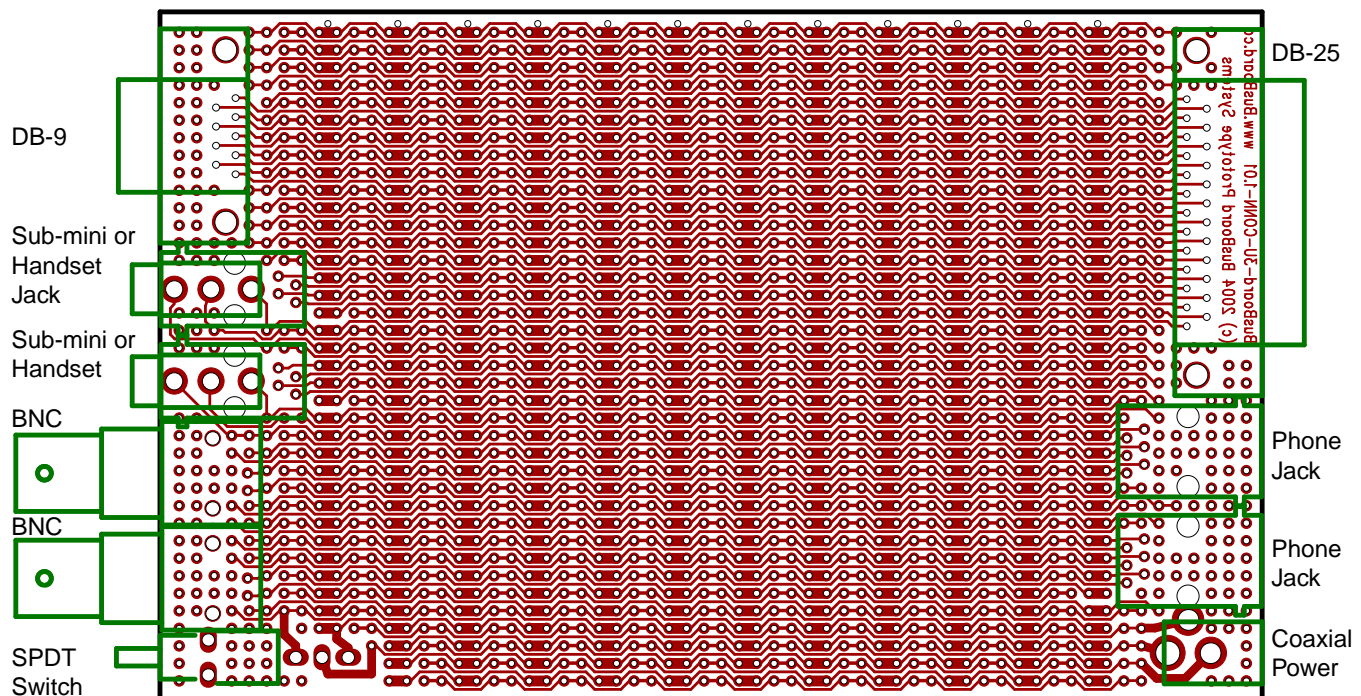
- Opposite pins of a dual header can be on the same bus or different busses.
- Soldermask simplifies soldering and prevents solder bridges on tracks.
- Standard single height (3U) Eurocard/VME size. Many off the shelf enclosures and card cages are available.

Specifications

- **Lead Free PCB** with an anti-tarnish coating for easy soldering. RoHS compatible.
- Etched FR4 glass-epoxy circuit board.
- Solder mask to prevent solder bridges.
- Single sided PCB, 1oz/ft² copper.
- Holes are drilled on 0.1" (2.54mm) centers.
- 0.037" (0.94mm) holes sized for ICs or square post headers.
- 76 separate BusBoard traces.
- 3.9" wide, 6.3" long, 1/16" thick (100 x 160 x 1.6mm).

Order Part# **BB3UC**

Board Layout With Connectors



Compatible Connectors

The following list provides suggestions for parts which can be used with BusBoard-3U-CONN. It is not an exhaustive list. In most cases, parts from many different manufacturers may be used.

Telephone Connectors

- Amp 520249-2 Modular Phone Handset Jack, Right Angle, 4 Positions, 4 Contacts.
- Amp 520257-2 Modular Phone Handset Jack, Vertical, 4 Positions, 4 Contacts.
- Amp 520250-3 Modular Phone Jack, Right Angle, 6 Positions, 6 Contacts.
- Amp 520258-3 Modular Phone Jack, Vertical, 6 Positions, 6 Contacts.

Barrel Coaxial Power Connectors

- Switchcraft RAPC722 Coaxial Barrel Power Connector, 2mm Center Pin.
- Switchcraft RAPC712 Coaxial Barrel Power Connector, 2.5mm Center Pin.

Sub-mini Connectors

- Switchcraft 35RAPC2AV 1/8" Sub-Mini Jack, Right Angle.

BNC Connectors

- Amp 227161-2 BNC Connector, Right Angle, Black Housing.
- Amp 227161-1 BNC Connector, Right Angle, White Housing.
- Molex 73137-5005 BNC Connector, Right Angle, Black Housing.
- Molex 73137-5015 BNC Connector, Right Angle, White Housing.

Right Angle DB Connectors

- Amp 748879-1 DB-9 Male Connector, Right Angle, PCB mount, 0.318 Style, Boardlocks, 4-40 Threaded Inserts.
- Amp 748875-1 DB-9 Female Connector, Right Angle, PCB mount, 0.318 Style, Boardlocks, 4-40 Threaded Inserts.
- Amp 748881-1 DB-25 Male Connector, Right Angle, PCB mount, 0.318 Style, Boardlocks, 4-40 Threaded Inserts.
- Amp 748877-1 DB-25 Female Connector, Right Angle, PCB mount, 0.318 Style, Boardlocks, 4-40 Threaded Inserts.

Vertical DB Connectors

- Amp 745051-2 DB-9 Male Connector, Vertical, PCB mount, 0.318 Style, 4-40 Threaded Inserts.
- Amp 207841-4 DB-9 Female Connector, Vertical, PCB mount, 0.318 Style, 4-40 Threaded Inserts.
- Amp 745053-2 DB-25 Male Connector, Vertical, PCB mount, 0.318 Style, 4-40 Threaded Inserts.
- Amp 745058-4 DB-25 Female Connector, Vert, PCB mount, 0.318 Style, 4-40 Threaded Inserts.

SPDT Switches

- E-Switch 100-SP-1-T1-B1-M7-Q-E SPDT Switch, Right Angle, PCB Mount.
- NKK M2012SS2W30 SPDT Switch, Right Angle, PCB Mount.

Note: The ProtoBoard-3U-CONN provides the same connector footprints as the BusBoard-3U-CONN board (plus a RJ45 ethernet jack) with a ProtoBoard 6-hole strips instead of the BusBoard pattern. The BusBoard-3U-CONN board does not have a RJ11 ethernet connector footprint.

X-ON Electronics

Largest Supplier of Electrical and Electronic Components

Click to view similar products for PCBs & Breadboards category:

Click to view products by [BusBoard Prototype manufacturer](#):

Other Similar products are found below :

[8004](#) [8007](#) [8016](#) [8017](#) [8028](#) [8029](#) [1268-12](#) [1268-10](#) [1320833-1](#) [923252-R](#) [3410](#) [3396](#) [15107](#) [8006](#) [8015](#) [8018](#) [8019](#) [8020](#) [1268-19](#) [1268-20](#) [8026](#) [1239-19](#) [SBBTH1520-1](#) [SBBTH1506-1](#) [SBBTH4080-1](#) [SBBTH3030-1](#) [SBBTH1512-1](#) [SBBTH1508-1](#) [SBBSM2120-1](#) [SBB2808-1](#) [SBB2805-1](#) [SBB1605-1](#) [SBB1602-1](#) [SBB1005-1](#) [SBB1002-1](#) [3426](#) [32P15WE](#) [ZAS1X206203XRPU160](#) [SBBTH3040-1](#) [SBB0004-1](#) [SBB830-QTY10](#) [7115](#) [923749-I](#) [RE013-LF](#) [RE014-LF](#) [RE015-LF](#) [RE1210-LF](#) [RE200-C3](#) [RE210-S1](#) [RE317-HP](#)