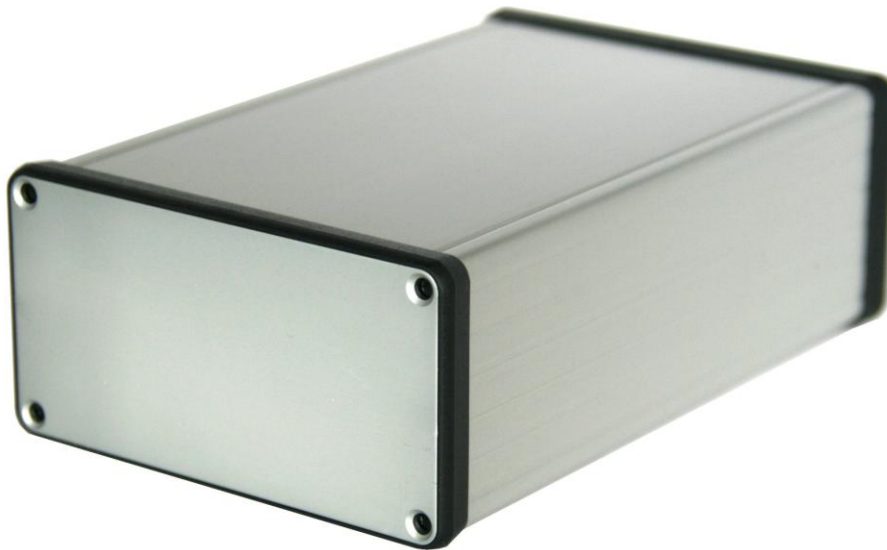


BOX3-1455N

An extruded aluminum enclosure with 11 slots for Size 3 prototyping boards.



AVAILABLE STYLES:

SILVER BOX

PART#: BOX3-1455N-SV

BLACK BOX

PART#: BOX3-1455N-BK

RED BOX

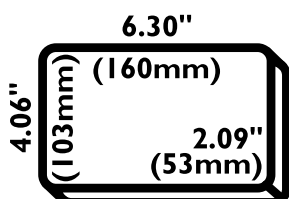
PART#: BOX3-1455N-RD

BLUE BOX

PART#: BOX3-1455N-BL

Enclosure Features:

- Box is anodized extruded aluminum with end plates anodized to match, and polycarbonate plastic bezels.
- Box Size 6.30 x 4.06 x 2.09 inches (160 x 103 x 53 mm).
- 11 built-in card guides for Size 3 PCBs (160 x 100mm).
- Screws and self adhesive rubber feet included.
- Slide out top panel plate.
- Rugged body constructed from extruded aluminum with a minimum thickness of .06" (1.5 mm).
- Available in four colors (Silver, Black, Red, Blue).



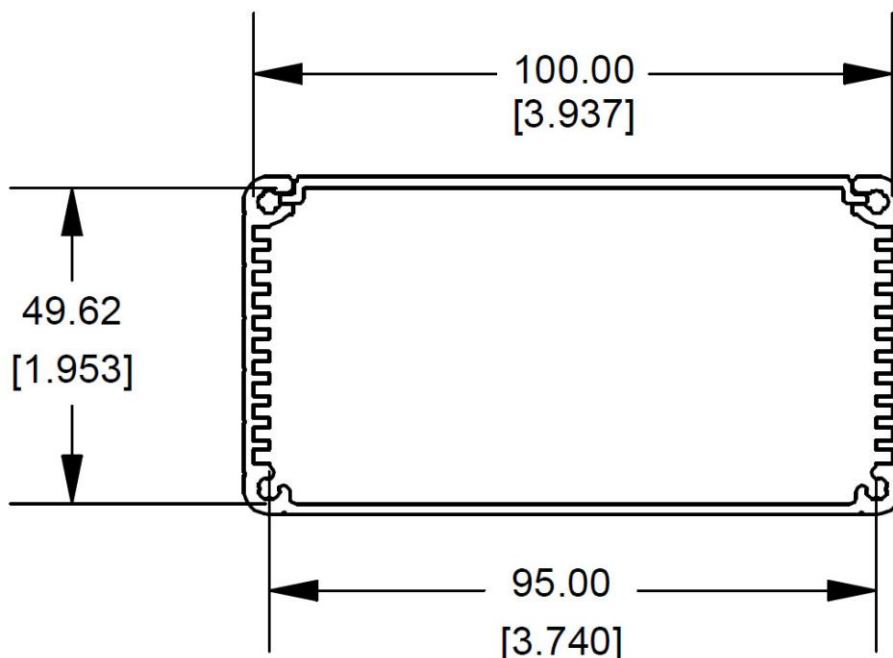
SIZE 3



Enclosure Details:

The BOX3-1455L is an extruded aluminum enclosure for electronic projects. The enclosure is designed for BusBoard Prototype Systems Size 3 prototype PCBs (160x100mm boards) which are standard Eurocard/VME 3U size.

PC boards mount horizontally by sliding into 11 built-in card guide slots. Two aluminum end panels are provided with attractive plastic bezels to hide the seams. The screws are recessed flathead type to provide a flat surface. The aluminum is anodized for protection from the elements. The end panels and the top plate can be removed for easy drilling or cutting of holes. Screws and adhesive rubber feet are included.



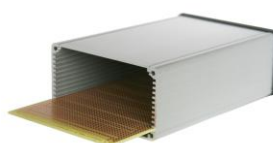
Related Products:



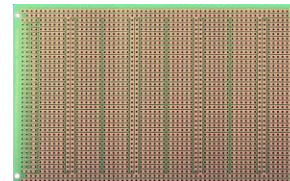
BOX2-1455L
Enclosure



BOX3-1455N
Enclosure



KBOX3-AN-POW
Enclosure Kit



POW3U PowerBoard

X-ON Electronics

Largest Supplier of Electrical and Electronic Components

Click to view similar products for [Enclosures, Boxes & Cases](#) *category:*

Click to view products by [BusBoard Prototype](#) *manufacturer:*

Other Similar products are found below :

[585-R-WH-PK](#) [M-10-PLATED](#) [60221-01](#) [60566-01-000](#) [HPL-9VB BATT DOOR](#) [M18-PLTD](#) [M-21-PLATED](#) [63310-01-000](#) [6711GSKT](#)
[71884-29-028](#) [LH45-100 Black](#) [72868-510-000](#) [CNS-0000 Black](#) [72883-510-000](#) [CNS-0101 Black](#) [72906-510-000](#) [CNS-0407 Black](#) [73092-](#)
[510-000](#) [CNM-0101 Black](#) [73105-510-000](#) [CNL-0101 Black](#) [73108-510-000](#) [CNL-0303 Black](#) [73395-510-039](#) [CNS-0006 Bone](#) [74016-510-000](#)
[CNL-0006 Black](#) [74257-510-000](#) [CNL-0004](#) [MDC-1183-PLAIN-ALUM](#) [MDC-1183-PTD](#) [MDC-13104-PTD](#) [MDC-973-PTD](#) [76](#)
[77153-01-028](#) [FLX6030](#) [83535-01-508](#) [90026-501-000](#) [PS36-200](#) [116-508](#) [120-407](#) [120-910](#) [127-908](#) [130-008](#) [1301170079](#) [1322GSKTEP](#)
[1325GSKT3](#) [138-PLAIN](#) [1434-1210](#) [EAS-500 \(BLACK ANO\)](#) [1804RP-RB-PK](#) [190-005](#) [2202307](#) [KAB3321 BLACK](#) [KAB3421](#) [2697466](#)
[S52213](#) [2901123](#) [2901699](#) [A0645271](#) [A20P20](#) [2106-IR](#)