

Features

ProtoBoard saves time! The PCB is designed specifically for the Hammond 1553B box. No cutting is required. The mounting holes are present in the right spots.

The convenient 2-hole ProtoBoard pattern provides an easy way to connect parts while maximizing usable board area.

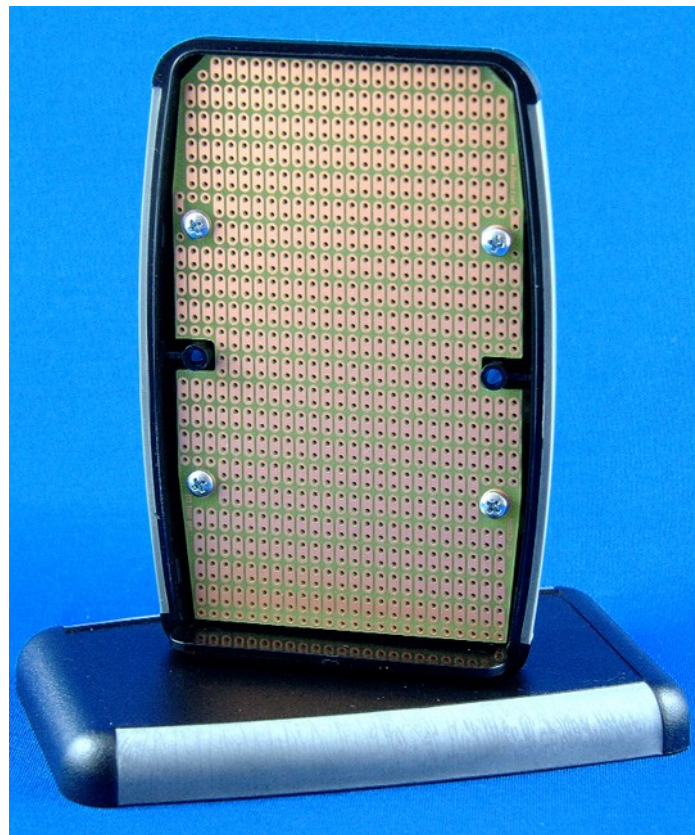
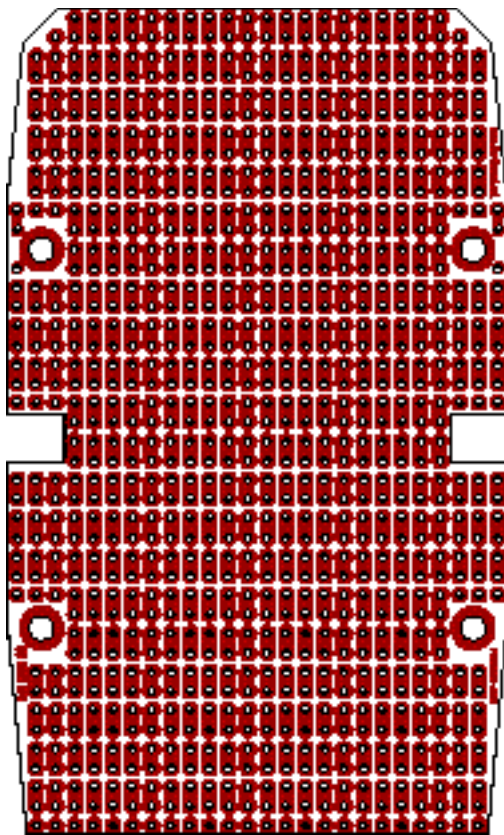
Lead free etched copper PCB with an anti-tarnish coating for easy soldering.

PCB Specifications

- High-quality FR4 glass epoxy board.
- Four 0.125" (1/8") mounting holes.
- Four 4-40 PCB mounting screws provided.
- Single sided, 1oz/ft² copper PCB
- 0.042" holes drilled on 0.1" centers
- PCB Size 4.3 x 2.6 in. (109.2 x 66 mm)

Order Part# PR1553B (for PCB only)

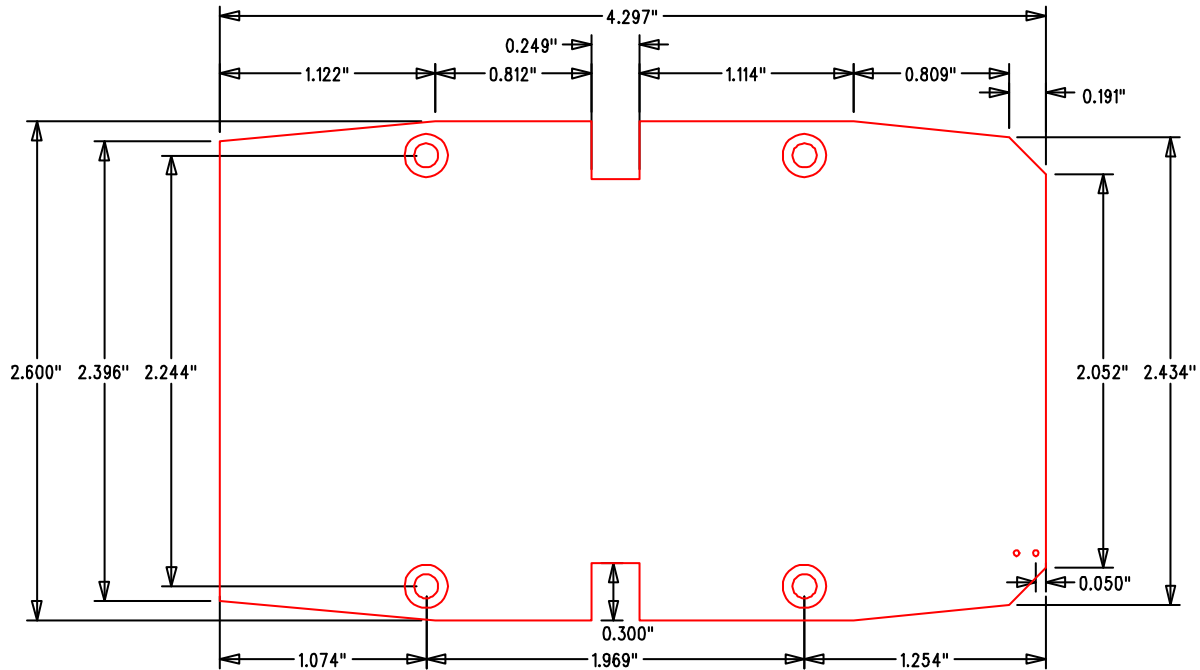
Board Layout (actual size)



PR1553B Prototyping Board shown with the Hammond 1553BBK box (box not included).

To purchase the PCB + Box together, order BPS part# KIT-1553B-BK

PCB Mechanical Dimensions



Hammond 1553B Hand Held Case Features

Note: The box is **NOT** included with BPS part# PR1553B.

The box is included with part# KIT-1553B-BK.

Soft-sided ergonomic hand held electronic case.

Box Size 4.6 x 3.1 x 1.0 inches (117 x 79 x 24mm)

1 removable end panel (included).

Built-in PCB standoffs.

Box closed with self tapping screws (included).

Recessed top for membrane display or keypad.

Lap joint construction provides protection against dust accumulation and splashing water.

Gray/Gray, Black/Gray, Black/Black, Yellow, Red, and Translucent Blue colors available.

To order the box by itself, use Hammond part #'s 1553BGY, 1553BBK, 1553BBKBK, 1553BTBUBK, 1553BRDBK, 1553BYLBK

See <http://www.hammondmfg.com/1553.htm>
<http://www.hammondmfg.com/1553colors.htm>

© 2013 BusBoard Prototype Systems Ltd.



BusBoard Prototype Systems - Built for designers

www.BusBoard.com sales@busboard.com

BPS-MAR-PR1553B-001 Rev 4.10



1553BBKBK



1553BTBUBK



1553BRDBK



1553BYLBK

1553BGY



X-ON Electronics

Largest Supplier of Electrical and Electronic Components

Click to view similar products for PCBs & Breadboards category:

Click to view products by [BusBoard Prototype manufacturer](#):

Other Similar products are found below :

[8004](#) [8007](#) [8016](#) [8017](#) [8028](#) [8029](#) [1268-12](#) [1268-10](#) [1320833-1](#) [923252-R](#) [3410](#) [3396](#) [15107](#) [8006](#) [8015](#) [8018](#) [8019](#) [8020](#) [1268-19](#) [1268-20](#) [8026](#) [1239-19](#) [SBBTH1520-1](#) [SBBTH1506-1](#) [SBBTH4080-1](#) [SBBTH3030-1](#) [SBBTH1512-1](#) [SBBTH1508-1](#) [SBBSM2120-1](#) [SBB2808-1](#) [SBB2805-1](#) [SBB1605-1](#) [SBB1602-1](#) [SBB1005-1](#) [SBB1002-1](#) [3426](#) [32P15WE](#) [ZAS1X206203XRPU160](#) [SBBTH3040-1](#) [SBB0004-1](#) [SBB830-QTY10](#) [7115](#) [923749-I](#) [RE013-LF](#) [RE014-LF](#) [RE015-LF](#) [RE1210-LF](#) [RE200-C3](#) [RE210-S1](#) [RE317-HP](#)