

*Prototype circuit board for general purpose analog and digital use.*

## Features

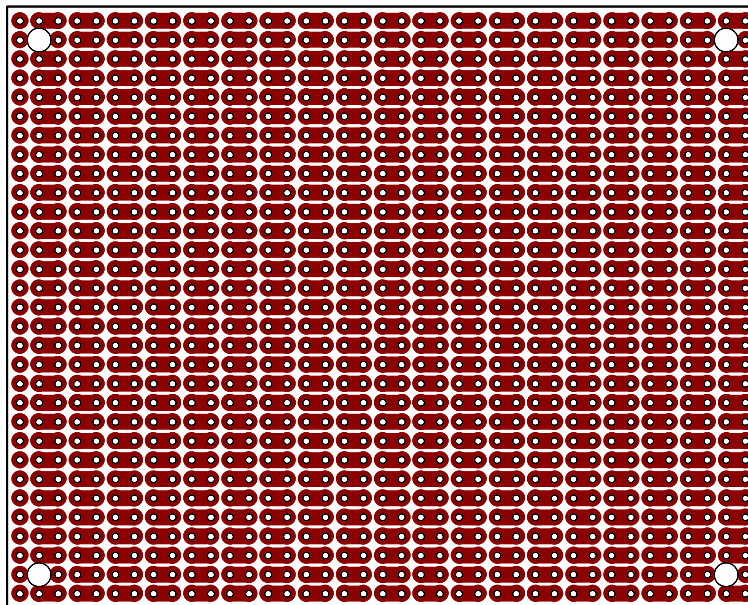
- *ProtoBoard* saves time! ProtoBoard-2H has a general purpose stripboard circuit pattern that is pre-cut with 2 holes per segment.
- 0.1" hole spacing for DIP integrated circuits and headers.
- BusBoard Size2 is ½ the size of a standard 3U size VME board.
- Four mounting holes provided.

## Specifications

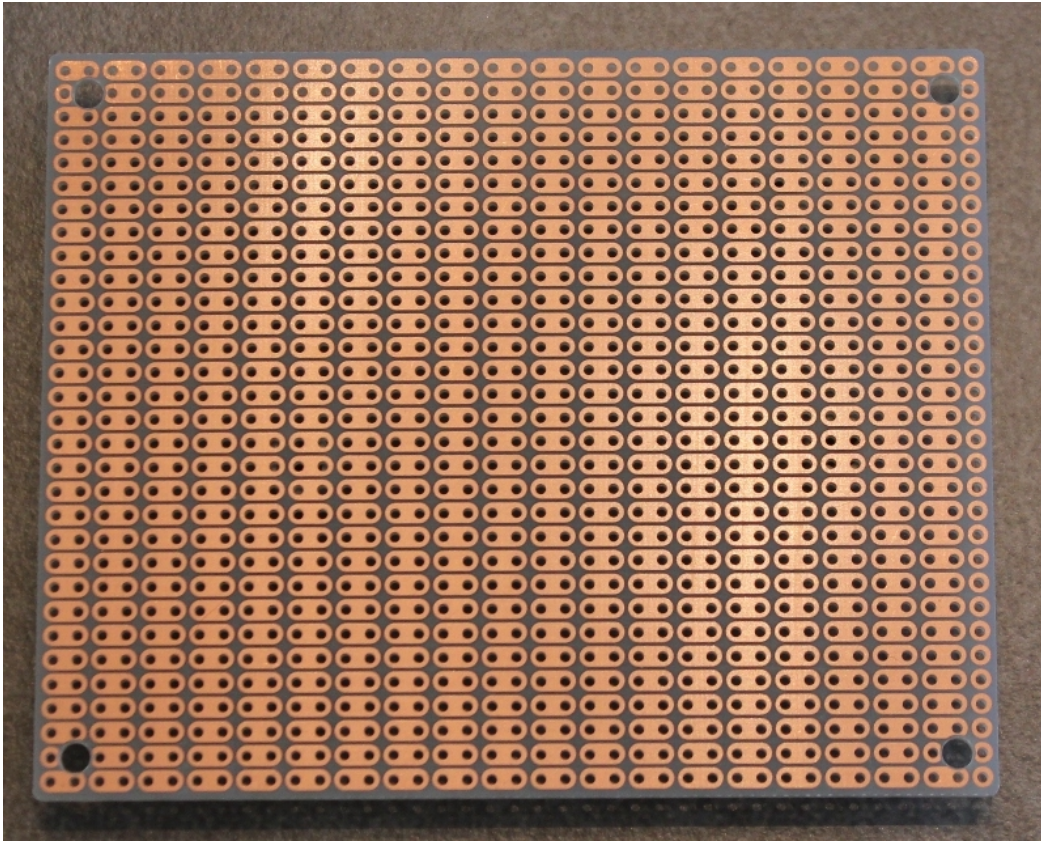
- Etched FR4 glass-epoxy circuit board.
- Single sided, 1oz/ft<sup>2</sup> copper with an anti-tarnish coating for easy soldering. Lead free and RoHS compatible.
- Holes are drilled on 0.1" (2.54mm) centers.
- 0.037" (0.94mm) holes sized for ICs or square post headers.
- 31 x 39 holes. Four 0.125" mounting holes.
- Size 2 = 100 x 80mm (3.94 x 3.15in), 1/16" thick (1.6mm)

**Order Part# PR2H2**

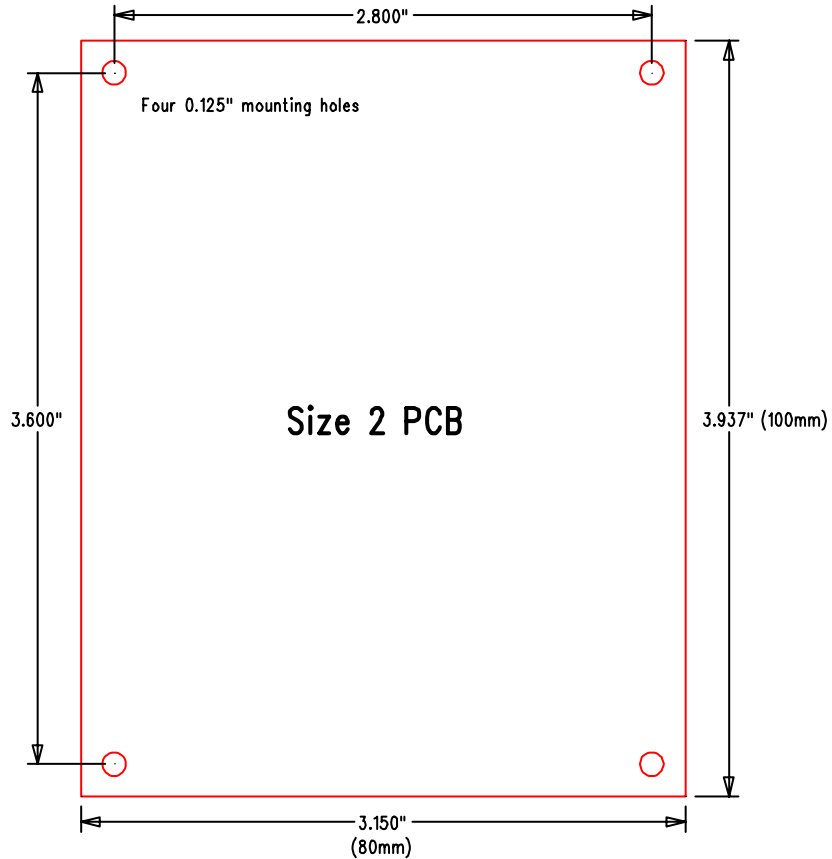
## PR2H2 Board Layout (actual size)



## PR2H2 Board Photo



## Board Dimensions



## X-ON Electronics

Largest Supplier of Electrical and Electronic Components

*Click to view similar products for PCBs & Breadboards category:*

*Click to view products by [BusBoard Prototype manufacturer](#):*

Other Similar products are found below :

[8004](#) [8007](#) [8016](#) [8017](#) [8028](#) [8029](#) [1268-12](#) [1268-10](#) [1320833-1](#) [923252-R](#) [3410](#) [3396](#) [15107](#) [8006](#) [8015](#) [8018](#) [8019](#) [8020](#) [1268-19](#) [1268-20](#) [8026](#) [1239-19](#) [SBBTH1520-1](#) [SBBTH1506-1](#) [SBBTH4080-1](#) [SBBTH3030-1](#) [SBBTH1512-1](#) [SBBTH1508-1](#) [SBBSM2120-1](#) [SBB2808-1](#) [SBB2805-1](#) [SBB1605-1](#) [SBB1602-1](#) [SBB1005-1](#) [SBB1002-1](#) [3426](#) [32P15WE](#) [ZAS1X206203XRPU160](#) [SBBTH3040-1](#) [SBB0004-1](#) [SBB830-QTY10](#) [7115](#) [923749-I](#) [RE013-LF](#) [RE014-LF](#) [RE015-LF](#) [RE1210-LF](#) [RE200-C3](#) [RE210-S1](#) [RE317-HP](#)