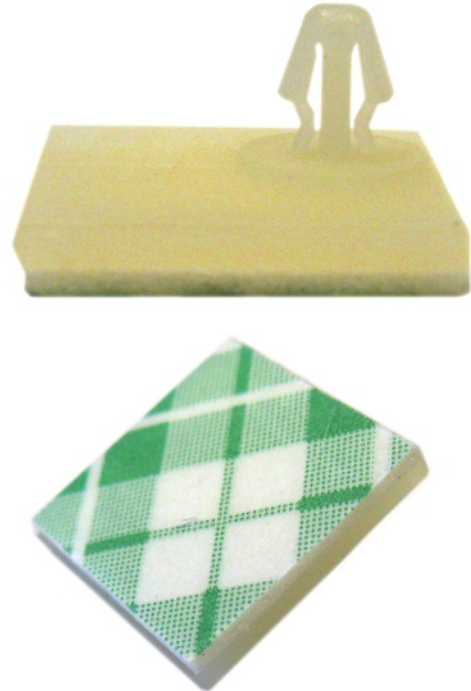


Adhesive Standoffs (SA)

Adhesive standoffs to securely attach PCBs to flat surfaces.



0.12" HEIGHT - AVAILABLE QUANTITIES:

8 Pack

PART#:
SA120x8

24 Pack

PART#:
SA120x24

100 Pack

PART#:
SA120x100

500 Pack

PART#:
SA120x500

1,000 Pack

PART#:
SA120x1000

0.18" HEIGHT - AVAILABLE QUANTITIES:

8 Pack

PART#:
SA180x8

24 Pack

PART#:
SA180x24

100 Pack

PART#:
SA180x100

500 Pack

PART#:
SA180x500

1,000 Pack

PART#:
SA180x1000

Adhesive Standoff Features:

- Low profile 0.12 or 0.18" standoff height.
- 0.6x0.6" square offset base allows use when holes are close to the PCB edge.
- Integrated clip locks PCBs with 0.125" diameter holes in place.
- Material: Nylon 66(UI), Flame Class: 94V-2.
- 3M Adhesive Tape Backing.

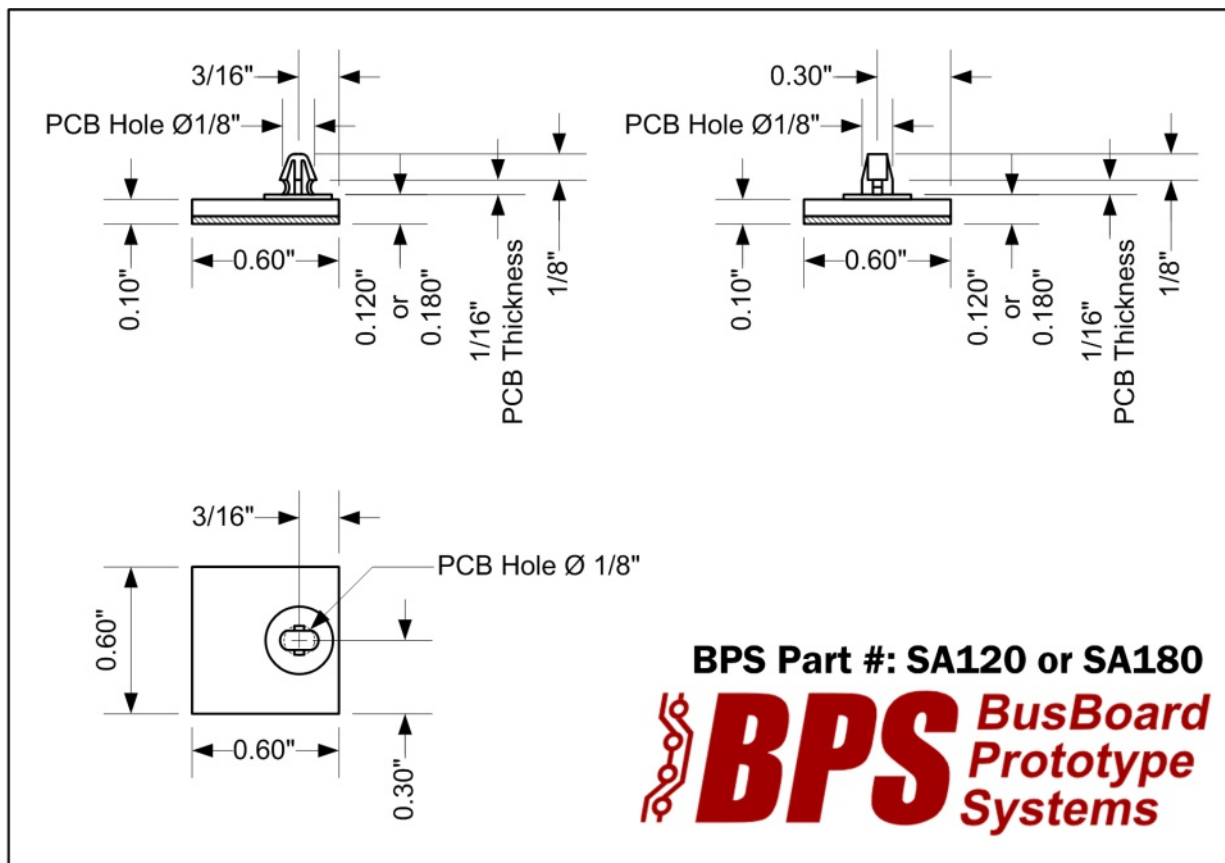


Adhesive Standoff Details:

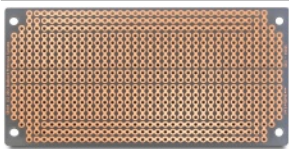
The SA120 and SA180 are low-profile adhesive standoffs with 0.120" and 0.180" standoff heights, respectively. It securely attaches your PCB to a flat surface. The post inserts into a 0.125" mounting hole. The post includes a locking tab that secures the PCB when inserted. It can be used with 1/16" or 1/32" thick PCBs.

The 0.6 x 0.6" square base is offset to allow the base to be underneath the board when the mounting hole is close to the PCB edge. The offset base provides a large sticking surface while permitting the PCB to be mounted in tight spaces or close to walls. This can be useful when working with small enclosures.

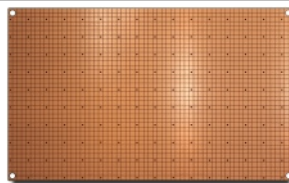
High-quality 3M brand double-sided tape secures the standoff to a flat surface.



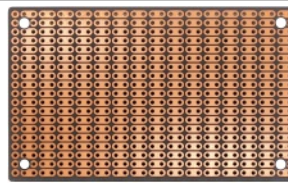
Related Products:



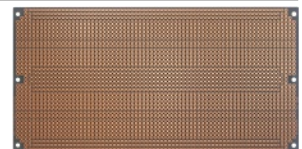
SB404 Solderable
PC BreadBoard



SP3-100x100-G
Size 3 SMTpads



PR2H1 ProtoBoard



SB1660 Solderable
PC BreadBoard

X-ON Electronics

Largest Supplier of Electrical and Electronic Components

Click to view similar products for [Standoffs & Spacers](#) category:

Click to view products by [BusBoard Prototype](#) manufacturer:

Other Similar products are found below :

[M0513-3-N](#) [M0516-3-N](#) [M0517-3-N](#) [M0518-3-N](#) [M0521-3-N](#) [M0524-3-N](#) [M0532-35-AL](#) [M0532-35-N](#) [M0543-4-AL](#) [M0544-35-N](#) [M0544-3-N](#) [M0545-3-AL](#) [M0553-3-N](#) [M0564-4-N](#) [M0608-5-SS](#) [M0609-5-SS](#) [M0610-35-AL](#) [M0613-3-N](#) [M0651-5-SS](#) [M0653-35-N](#) [M0654-4-SS](#) [M0655-5-AL](#) [M0655-5-N](#) [M0660-4-AL](#) [M0660-4-N](#) [M0670-35-N](#) [M0671-5-N](#) [M0671-5-SS](#) [M0722-5-N](#) [M0725-6-N](#) [M0731-4-N](#) [M0904-B-25-AL](#) [M1273-2545-AL](#) [M1273-3005-AL](#) [M1303-3506-AL](#) [M1307-3506-AL](#) [M1313-3005-N](#) [M1313-4007-AL](#) [M1314-3005-AL](#) [M1314-3005-SS](#) [M1315-3005-SS](#) [M1315-4007-N](#) [M1317-3506-AL](#) [M1317-4007-SS](#) [M1318-3005-SS](#) [M1320-3005-AL](#) [M1320-3005-N](#) [M1321-3005-SS](#) [M1321-4007-AL](#) [M1322-4007-N](#)