

Prototyping circuit board for 0805, 1206, SOIC, SOT and other SMT parts.

Features

- SMT rectangle pads are spaced for 0805 and 1206 components.
 - **SMTboard** has three SOIC-32 footprints each routed to 32 pads.
 - Solid ground plane on back side for low noise in RF and high speed logic circuits.
 - Every second SMT rectangle pad has an unplated hole for easy connection to the ground plane on the back side. Just insert a wire and solder. A plated hole option is available.
 - Two power rails. Four mounting holes.
- Standard single height (3U) Eurocard/VME size.
 - Twelve SOT23 footprints. SOT223 and additional SOT23 parts can fit on the SMT rectangle pads.
 - SMT rectangle pads have 0.1" spacing to allow DIP ICs and headers to be attached.
 - Through hole prototyping area for headers, power connections, and DIP ICs.
 - The **BusBoard** zig-zag circuit pattern on the through hole area allows easy access to both sides of headers and DIP ICs.

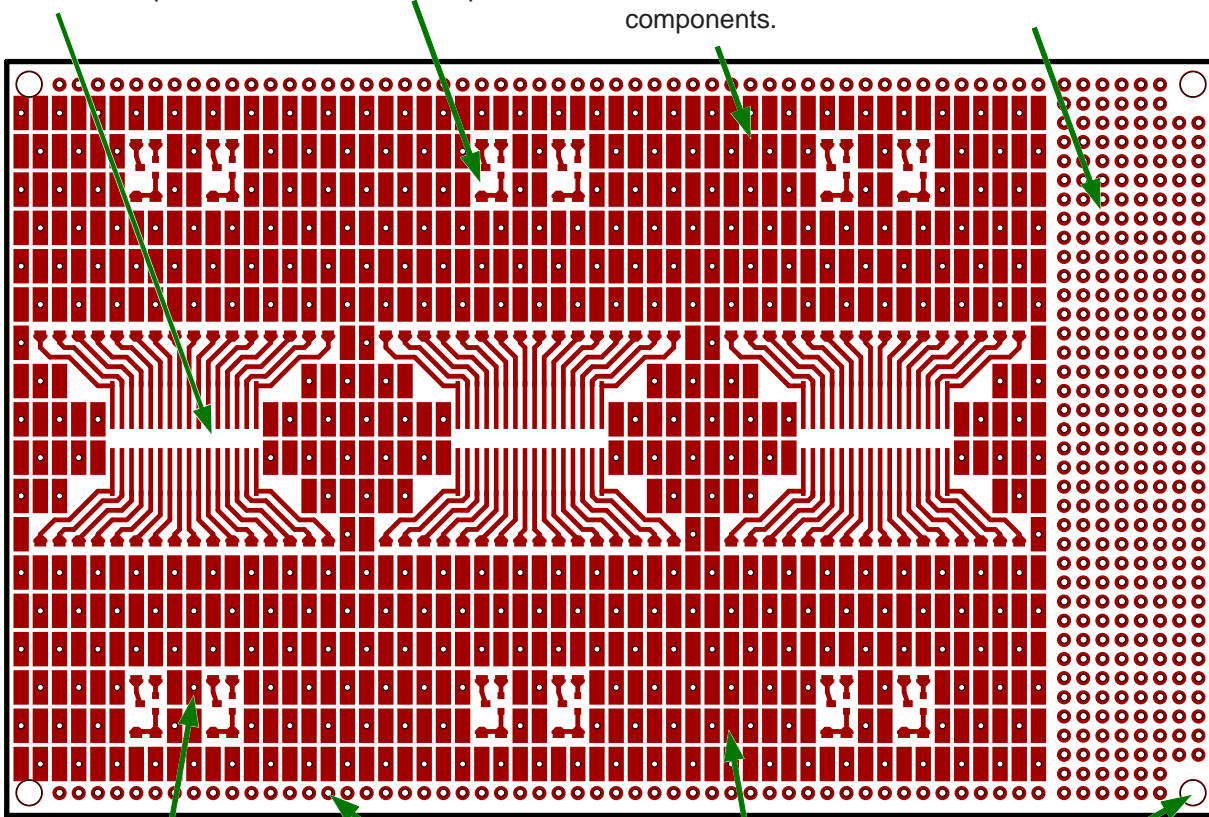
Board Layout (component side)

SOIC-32 footprints routed to 32 pads.

SOT-23 footprints routed to four pads.

SMT pads are spaced for 0805 and 1206 SMT components.

Through-hole area for DIP ICs and headers.



Every second SMT pad has an unplated hole for easy connection to the ground plane. Just insert a wire and solder.

Two power rails.

SMT pads have 0.1" spacing. DIP ICs can be soldered to pads.

Four mounting holes.

SMTboard-3U Data Sheet, Continued

Specifications

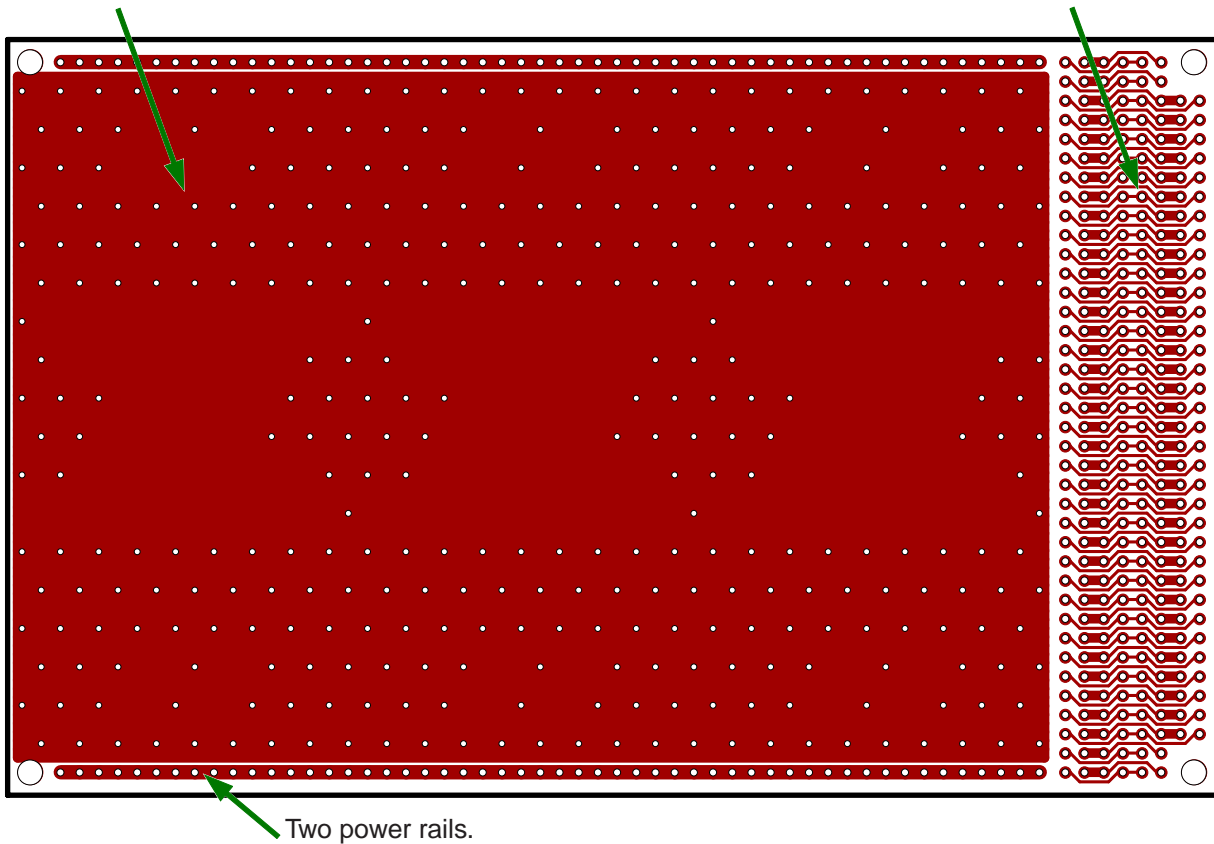
- Etched FR4 glass-epoxy circuit board.
- 1oz/ft² copper, with an anti-tarnish coating for for easy soldering. Lead free.
- SMTboard-3U 3.9" wide, 6.3" long, 1/16" thick (100 x 160 x 1.6mm).
- SMTboard-3U-PTH 3.9" wide, 6.3" long, 1/16" thick (100 x 160 x 1.6mm), plated holes.
- SMTboard-3U-THIN 3.9" wide, 6.3" long, 1/32" thick (100 x 160 x 0.8mm).
- Holes are drilled on 0.1" (2.54mm) centers in through hole area. All holes are unplated.
- 0.037" (0.94mm) holes for ICs or square post headers in through hole area.
- 0.031" (0.79mm) holes for connections to ground plane in SMT area.

**Order Part# SMT3U (1/16" thick, unplated holes)
or SMT3UT (thin version, 1/32" thick, unplated holes)
or SMT3-PTH (plated holes version, 1/16" thick)**

Board Layout (ground plane side)

Solid ground plane for high-speed logic and RF circuits.

Zig-zag pattern allows easy access to both sides of DIP ICs and headers.



X-ON Electronics

Largest Supplier of Electrical and Electronic Components

Click to view similar products for PCBs & Breadboards category:

Click to view products by [BusBoard Prototype manufacturer](#):

Other Similar products are found below :

[8004](#) [8007](#) [8016](#) [8017](#) [8028](#) [8029](#) [1268-12](#) [1268-10](#) [1320833-1](#) [923252-R](#) [3410](#) [3396](#) [15107](#) [8006](#) [8015](#) [8018](#) [8019](#) [8020](#) [1268-19](#) [1268-20](#) [8026](#) [1239-19](#) [SBBTH1520-1](#) [SBBTH1506-1](#) [SBBTH4080-1](#) [SBBTH3030-1](#) [SBBTH1512-1](#) [SBBTH1508-1](#) [SBBSM2120-1](#) [SBB2808-1](#) [SBB2805-1](#) [SBB1605-1](#) [SBB1602-1](#) [SBB1005-1](#) [SBB1002-1](#) [3426](#) [32P15WE](#) [ZAS1X206203XRPU160](#) [SBBTH3040-1](#) [SBB0004-1](#) [SBB830-QTY10](#) [7115](#) [923749-I](#) [RE013-LF](#) [RE014-LF](#) [RE015-LF](#) [RE1210-LF](#) [RE200-C3](#) [RE210-S1](#) [RE317-HP](#)