

General purpose prototyping circuit board for analog and digital use.

Features

- ST6U has the traditional stripboard pattern. Tracks run the length of the board.
- ST6U is a standard double height (6U) Eurocard/VME size. Many off the shelf enclosures and card cages are available.
- ST6U accepts two standard 64 pin or 96 pin DIN-41612 connector for backplane applications or expansion. The connector footprint gives easy access to connector rows 1 and 3. Row 2 has unconnected pads. The pads are on the 0.1" grid and can be used for general use if DIN connectors are not needed. The DINs can be used to connect multiple boards for large projects.
- 0.1" hole spacing for DIP integrated circuits and headers.

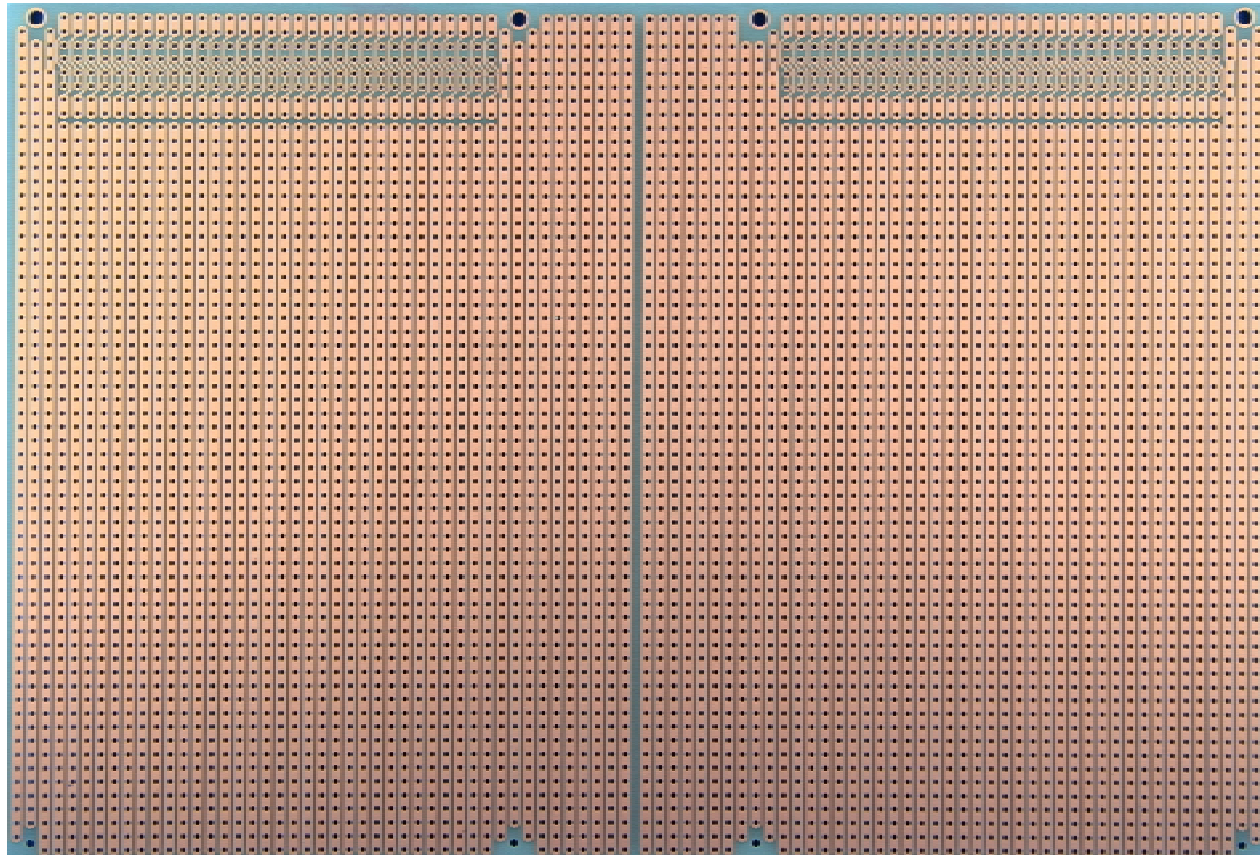
- StripBoard-6U uses a high-quality FR4 glass epoxy board. It has better stability and moisture resistance than other stripboards using phenolic or SRBP (synthetic resin bonded paper) to avoid warping.

Specifications

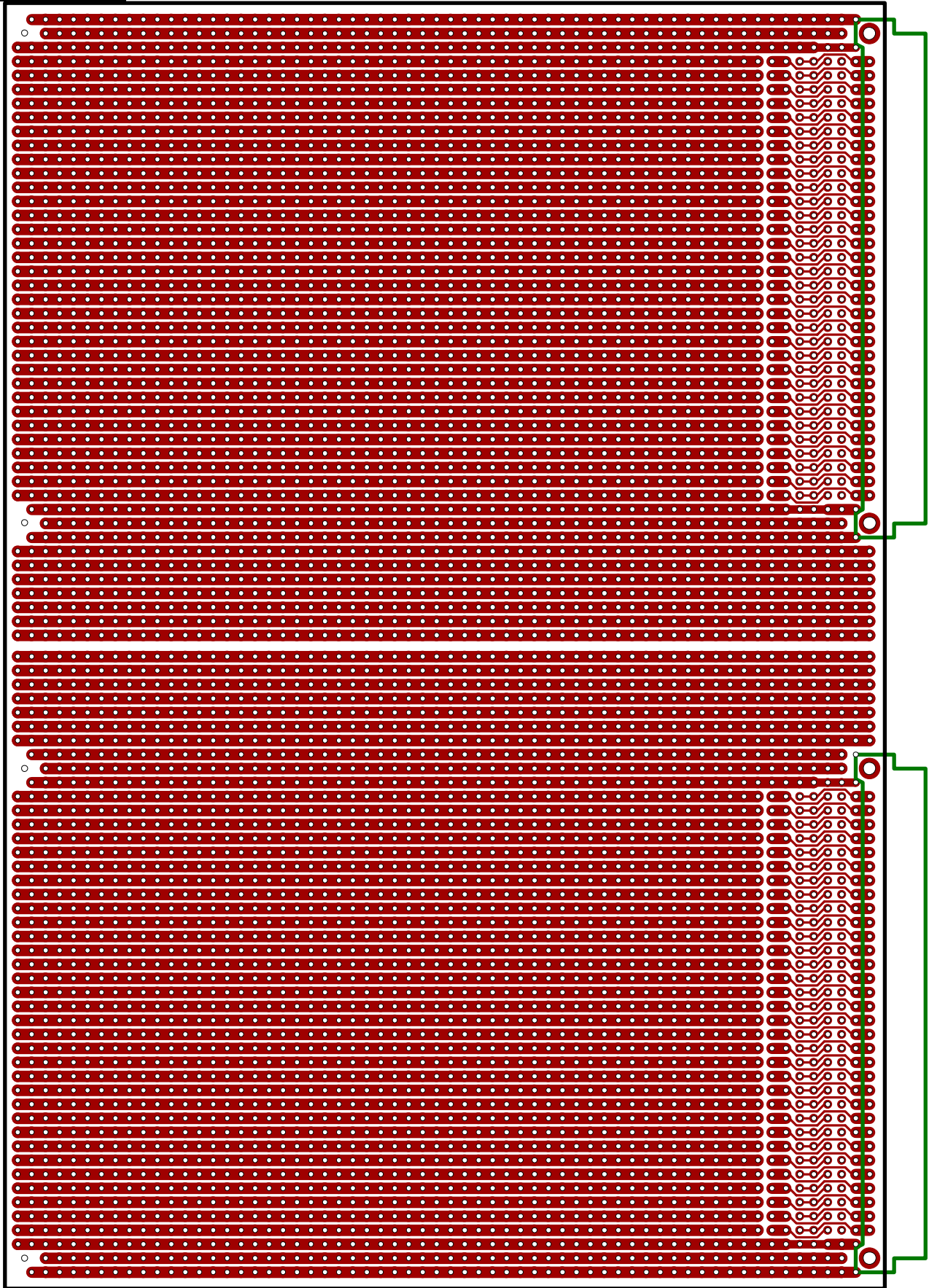
- Etched FR4 glass-epoxy circuit board.
- 1oz/ft² copper with an anti-tarnish coating for easy soldering. Lead free and RoHS compatible.
- Holes are drilled on 0.1" (2.54mm) centers.
- 0.037" (0.94mm) holes sized for ICs or square post headers.
- 90 x 62 holes (180 separate traces)
- 9.2" wide, 6.3" long, 1/16" thick (233.4 x 160 x 1.6mm).

Order Part# ST6U

Board Photo



Board Layout



X-ON Electronics

Largest Supplier of Electrical and Electronic Components

Click to view similar products for PCBs & Breadboards category:

Click to view products by [BusBoard Prototype manufacturer](#):

Other Similar products are found below :

[8004](#) [8007](#) [8016](#) [8017](#) [8028](#) [8029](#) [1268-12](#) [1268-10](#) [1320833-1](#) [923252-R](#) [3410](#) [3396](#) [15107](#) [8006](#) [8015](#) [8018](#) [8019](#) [8020](#) [1268-19](#) [1268-20](#) [8026](#) [1239-19](#) [SBBTH1520-1](#) [SBBTH1506-1](#) [SBBTH4080-1](#) [SBBTH3030-1](#) [SBBTH1512-1](#) [SBBTH1508-1](#) [SBBSM2120-1](#) [SBB2808-1](#) [SBB2805-1](#) [SBB1605-1](#) [SBB1602-1](#) [SBB1005-1](#) [SBB1002-1](#) [3426](#) [32P15WE](#) [ZAS1X206203XRPU160](#) [SBBTH3040-1](#) [SBB0004-1](#) [SBB830-QTY10](#) [7115](#) [923749-I](#) [RE013-LF](#) [RE014-LF](#) [RE015-LF](#) [RE1210-LF](#) [RE200-C3](#) [RE210-S1](#) [RE317-HP](#)