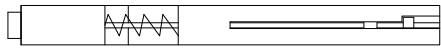
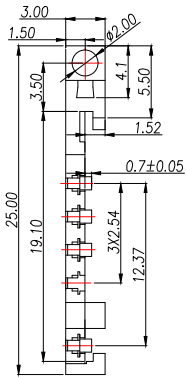
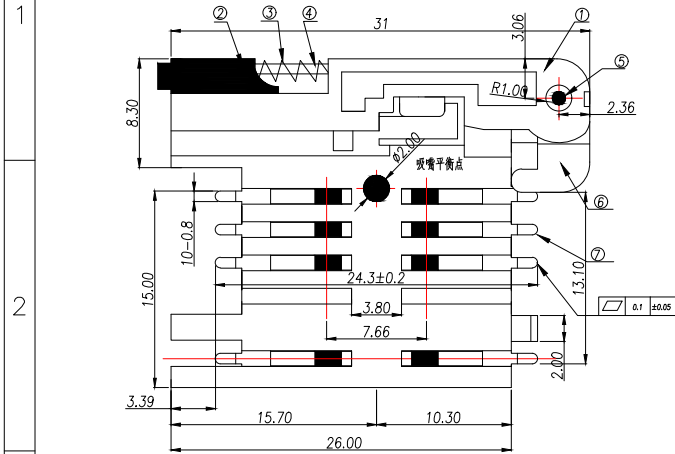
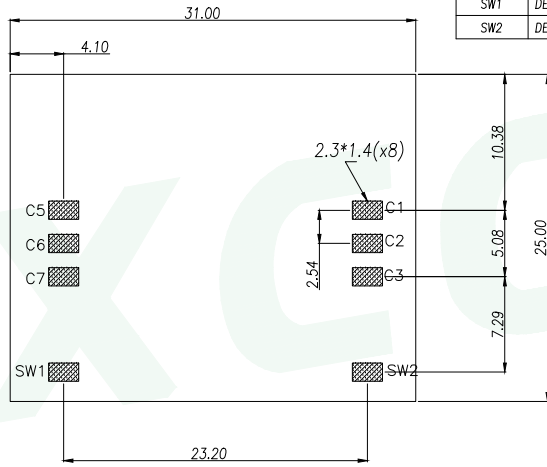
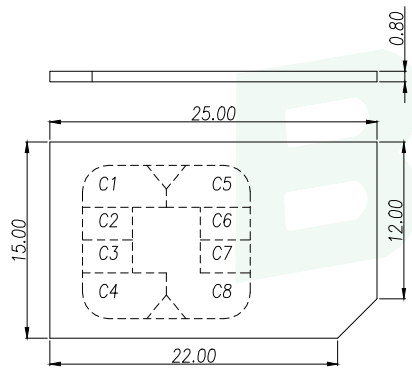


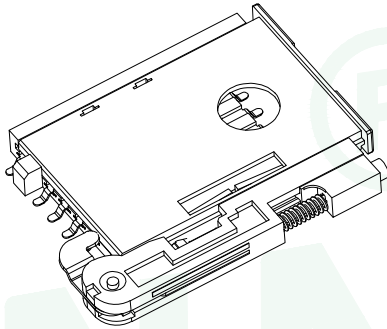
REV.	DESCRIPTION	ECN NO.	NAME	DATE



插卡方向  
焊脚朝下



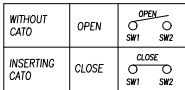
Pin No.	NAME
C1	VCC OF SIM
C2	RST OF SIM
C3	CLK OF SIM
C5	GND OF SIM
C6	VPP OF SIM
C7	I/O OF SIM
C4/C8	N/A
SW1	DETECTION SWITCH1
SW2	DETECTION SWITCH2



RECOMMENDED PCB LAYOUT  
GENERAL TOLERANCE ±0.05

7	簧片	磷铜	8	底层镀N三;表面局部镀A—
6	Z形片	不锈钢	1	
5	小轴	黄铜	1	
4	推杆	锰钢	1	
3	弹簧	不锈钢	1	
2	按钮	LCP	1	
1	支架	LCP/PPS	1	手工焊;材料为PPS 波峰焊;材料为LCP
序号	名称	材料	数量	备注

Circuit Diagram for Detect Switch



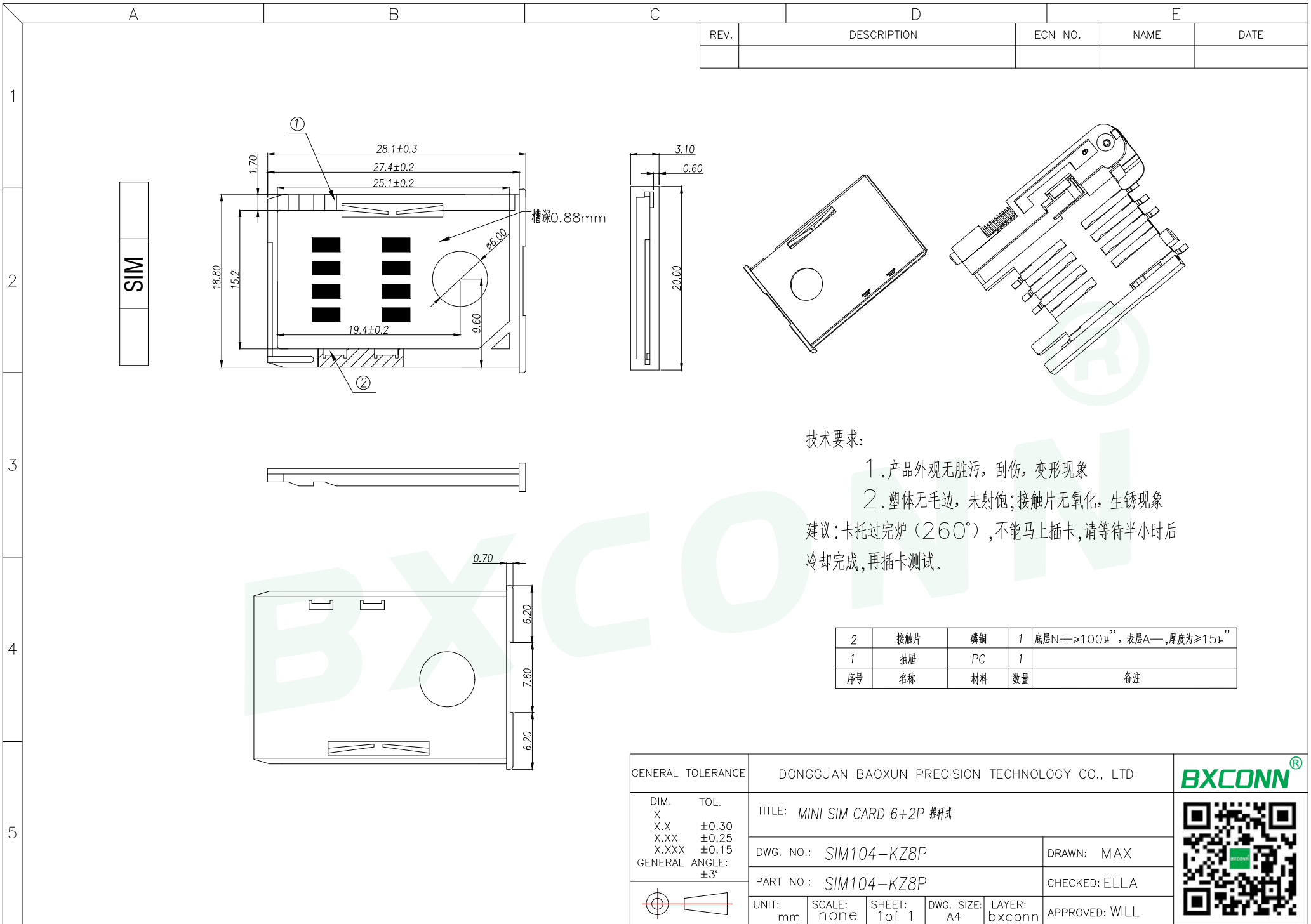
GENERAL TOLERANCE		DONGGUAN BAOXUN PRECISION TECHNOLOGY CO., LTD				
DIM. TOL.		TITLE: MINI SIM CARD 6+2P 推杆式				
X ±0.30		DWG. NO.: SIM104-KZ8P		DRAWN: MAX		
X.X ±0.25		PART NO.: SIM104-KZ8P		CHECKED: ELLA		
X.XX ±0.15		UNIT: mm		SCALE: none	SHEET: 1 of 1	APPROVED: WILL
GENERAL ANGLE: ±3°		DWG. SIZE: A4	LAYER: bxconn			

技术要求:

1. 产品外观无脏污,刮伤,变形现象
2. 塑体无毛边,未射饱;端子无氧化,生锈现象

备注:

簧片镀金层的厚度可根据客户的需求做变更  
建议:卡托过完炉(260°),不能马上插卡,请等待半小时后冷却完成,再插卡测试。





REV.	DESCRIPTION	ECN NO.	NAME	DATE

技术要求:

1. 产品外观无脏污, 刮伤, 变形现象
  2. 塑体无毛边, 未射饱; 接触片无氧化, 生锈现象
- 建议: 卡托过完炉 (260°), 不能马上插卡, 请等待半小时后冷却完成, 再插卡测试.

2	接触片	磷铜	1	底层N $\geq$ 100 $\mu$ , 表层A—, 厚度为 $\geq$ 15 $\mu$
1	抽屉	PC	1	
序号	名称	材料	数量	备注

GENERAL TOLERANCE		DONGGUAN BAOXUN PRECISION TECHNOLOGY CO., LTD				 
DIM.	TOL.	TITLE: MINI SIM CARD 6+2P 推杆式				
X		DWG. NO.: SIM104-KZ8P		DRAWN: MAX		
X.X	±0.30	PART NO.: SIM104-KZ8P		CHECKED: ELLA		
X.XX	±0.25	UNIT: mm		APPROVED: WILL		
X.XXX	±0.15	SCALE: none	SHEET: 1 of 1	DWG. SIZE: A4	LAYER: bxconn	
GENERAL ANGLE:	±3°					

## X-ON Electronics

Largest Supplier of Electrical and Electronic Components

*Click to view similar products for [Memory Card Connectors](#) category:*

*Click to view products by [BXCONN](#) manufacturer:*

Other Similar products are found below :

[6407-249V-25273P](#) [6407-249V-25343P](#) [6426-201-21343](#) [69.920.0553.0](#) [MCR60A-98D-2.54DSA\(70\)](#) [809180410000000](#) [DM3AT-SF-PEJM5\(41\)](#) [IC11S-BUR-PNEJL\(71\)](#) [C70210M0083692](#) [252-0144-000](#) [2041353-2](#) [308-DS1P0811-192](#) [HM2P09PDR360N9LF](#) [10014744-011TLF](#) [11327-001](#) [11327-002](#) [NX1-32T-KT3K\(05\)](#) [95622-003LF](#) [84648-056HLF](#) [CCM03-3109 B LFT](#) [MS3116J10-6PW](#) [2309923-1](#) [61126-050CAHLF](#) [GTFP08432B1HR](#) [G85D1160022HHR](#) [SCE2MSDB76A121SN](#) [SCE2MSDZN76A121SN](#) [10014744-011ALF](#) [10014744-011LF](#) [10057542-1211FLF](#) [10067972-000LF](#) [10067972-050LF](#) [10122302-20110LF](#) [G85D1162022HHR](#) [TF-05A](#) [M6014-12](#) [XKNANO-1412](#) [SMN-304-ARP6](#) [MIS11-S1F1-2000-A](#) [SMN-308-ARSP7](#) [SMN-308-ACSP7](#) [K-DYX-008](#) [K-DYX-004](#) [HYCW126-TF18-150B](#) [C7024-03](#) [SMO-1030](#) [MCS-110-KT](#) [SIM-217](#) [SNO-1355-KT](#) [SMO-1025-P10](#)