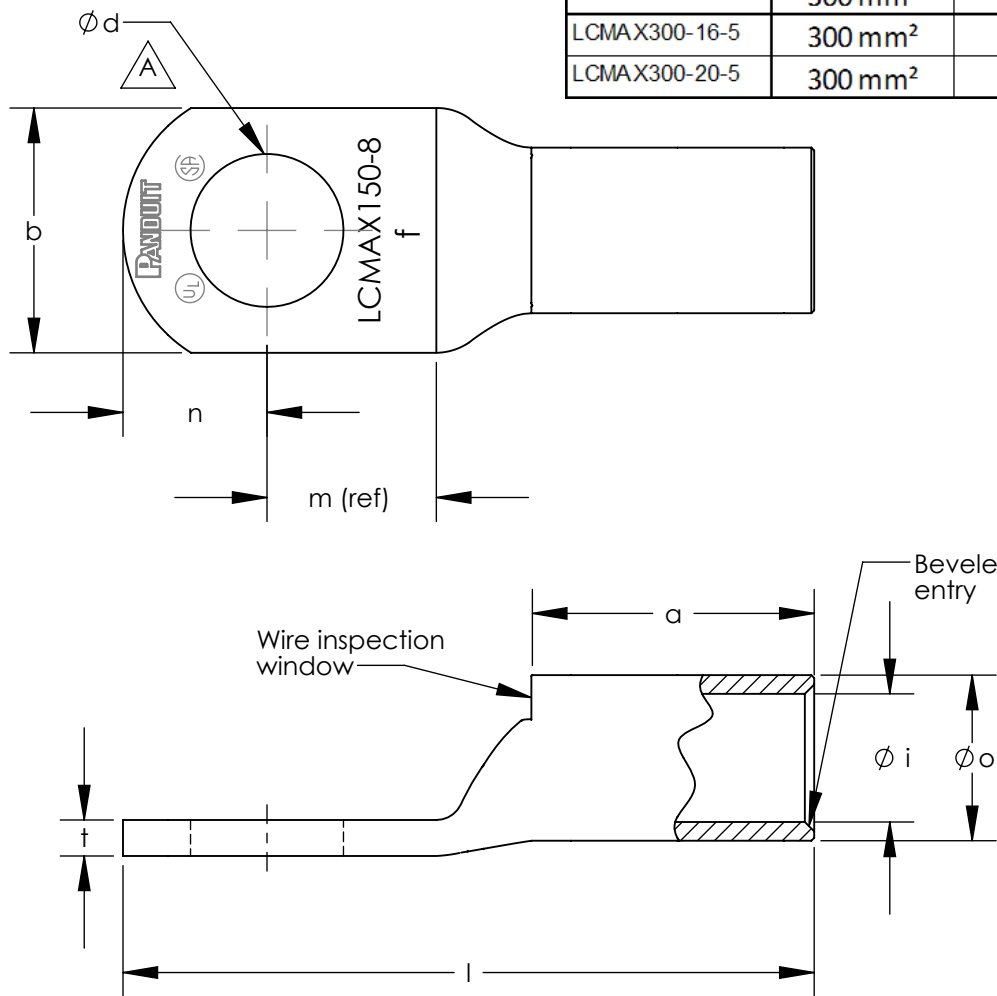
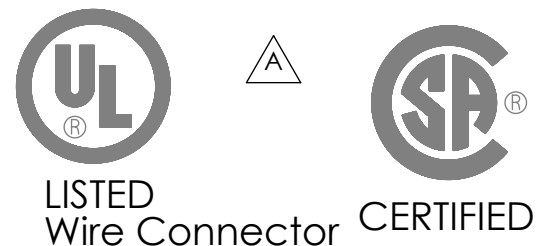


ALL DIMENSIONS ARE IN (mm)

Part Number	Wire Size	Wire Class	Stud Size	Wire Strip Length	l ±2.76	o ±.50	i ±.50	a ±2.25	m (ref)	n ±2.25	d ±.50	b ±2.25	t
LCMAX150-8-X	150 mm <sup>2</sup>	5f & 6f	M8	29.7	72.5	23.00	18.60	28.2	16.5	17.5	9.00	33.5	4.55±.50
LCMAX150-10-X	150 mm <sup>2</sup>	5f & 6f	M10	29.7	72.5	23.00	18.60	28.2	16.5	17.5	11.00	33.5	4.55±.50
LCMAX150-12-X	150 mm <sup>2</sup>	5f & 6f	M12	29.7	72.5	23.00	18.60	28.2	16.5	17.5	14.00	33.5	4.55±.50
LCMAX150-16-X	150 mm <sup>2</sup>	5f & 6f	M16	29.7	72.5	23.00	18.60	28.2	16.5	17.5	18.00	33.5	4.40±.50
LCMAX150-20-X	150 mm <sup>2</sup>	5f & 6f	M20	29.7	77.0	23.00	18.60	28.2	21.0	17.5	22.00	33.5	4.40±.50
LCMAX185-10-X	185 mm <sup>2</sup>	5f & 6f	M10	36.5	86.5	26.00	20.80	35.0	21.0	19.5	11.00	37.5	5.30±.50
LCMAX185-12-X	185 mm <sup>2</sup>	5f & 6f	M12	36.5	86.5	26.00	20.80	35.0	21.0	19.5	14.00	37.5	5.30±.50
LCMAX185-16-X	185 mm <sup>2</sup>	5f & 6f	M16	36.5	86.5	26.00	20.80	35.0	21.0	19.5	18.00	37.5	5.30±.50
LCMAX185-20-X	185 mm <sup>2</sup>	5f & 6f	M20	36.5	86.5	26.00	20.80	35.0	21.0	19.5	22.00	37.5	5.20±.50
LCMAX240-10-X	240 mm <sup>2</sup>	5f & 6f	M10	41.8	94.5	29.00	23.50	40.3	22.0	20.0	11.00	42.5	5.40±.55
LCMAX240-12-X	240 mm <sup>2</sup>	5f & 6f	M12	41.8	94.5	29.00	23.50	40.3	22.0	20.0	14.00	42.5	5.40±.55
LCMAX240-16-X	240 mm <sup>2</sup>	5f & 6f	M16	41.8	94.5	29.00	23.50	40.3	22.0	20.0	18.00	42.5	5.40±.55
LCMAX240-20-X	240 mm <sup>2</sup>	5f & 6f	M20	41.8	94.5	29.00	23.50	40.3	22.0	20.0	22.00	42.5	5.30±.55
LCMAX300-10-5	300 mm <sup>2</sup>	5f	M10	46.3	107.0	33.00	26.20	44.8	26.5	23.5	11.00	48.0	6.70±.55
LCMAX300-12-5	300 mm <sup>2</sup>	5f	M12	46.3	107.0	33.00	26.20	44.8	26.5	23.5	14.00	48.0	6.70±.55
LCMAX300-16-5	300 mm <sup>2</sup>	5f	M16	46.3	107.0	33.00	26.20	44.8	26.5	23.5	18.00	48.0	6.70±.55
LCMAX300-20-5	300 mm <sup>2</sup>	5f	M20	46.3	107.0	33.00	26.20	44.8	26.5	23.5	22.00	48.0	6.70±.55



- NOTES:
1. Material: High conductivity seamless copper tube.
  2. Plating: Parts are annealed and tin plated.
  3. WireType: Class 5 and 6 Flexible Stranded Copper Conductor per DIN VDE 0295, IEC 60228, and HD 383.
  4. UL Listed & CSA Certified Wire Connectors for applications up to 35kv, when crimped per instruction sheet included with Panduit packaging. Consult cable manufacturer for voltage stress relief instructions with applications greater than 2000 volts.
  5. UL & CSA Temperature Rating: 90°C



										<b>PANDUIT CORP. TINLEY PARK, ILLINOIS</b>					
										METRIC FLEX LUGS - LCMAX SERIES 150 - 300mm <sup>2</sup> CUSTOMER DRAWING					
										UNLESS OTHERWISE SPECIFIED DIMENSIONAL TOLERANCES ARE:			UNLESS OTHERWISE SPECIFIED, ALL DIMENSIONS ARE GIVEN IN INCHES, THIRD ANGLE PROJECTION		
										(.X) ±		(.XXX) ±		SCALE NONE	
										(.XX) ±		ANGLES ±			
01	11/12	JHNU	TLCO	A. ADDED: LCMAX150-10-X THRU LCMAX300-20-5 P/N'S, ANNEALING TO NOTE 2, NOTE 5, UL & CSA LOGOS.				10N014BH-NC	RGB	RGB	DRAWN BY TLCO	MAT'L:		DRAWING NO / CAD FILE 10N014BH-NC	
00	5/11	TLCO	TLCO	DRAWING RELEASED							DATE 5/11				
REV	DATE	BY	CHK	DESCRIPTION				ECN	-R	SUP	CHK'D TLCO				

## X-ON Electronics

Largest Supplier of Electrical and Electronic Components

*Click to view similar products for [Terminals](#) category:*

*Click to view products by [Panduit](#) manufacturer:*

Other Similar products are found below :

[HT-13-10](#) [71M-250-32-NB](#) [01-2065-1-0216](#) [00581P0075](#) [M10-10RX](#) [M10BCK](#) [60205-1](#) [604200-1](#) [60598-1-CUT-TAPE](#) [60617-1-C](#) [60873-1](#) [M14-516R/SK](#) [M14-6RSX](#) [M18-10FLX](#) [M18-8FBX](#) [M18-8R/LX](#) [M18BCK](#) [61314-6-C](#) [61-S](#) [61-SN-A](#) [62-NBM-A](#) [63-S](#) [640179-1](#) [640917-2-CUT-TAPE](#) [6501550002](#) [66107-2-C](#) [696683-1](#) [696834-1](#) [696861-1](#) [696931-1](#) [696999-1](#) [M8-516RK](#) [M86700006](#) [MA250DMFMX-A](#) [701-2007](#) [701-2307](#) [701-7761-03](#) [70F-110-32-PB](#) [718-N-A](#) [71M-187-20-NBL](#) [71M-250-32-NBL](#) [72F-187-20-NBL](#) [72M-250-32-NBL](#) [7310](#) [73F-250-32](#) [73F-250-32-NBL](#) [73F-250-32-NL](#) [F14-10C](#) [F-1M](#) [751-250](#)