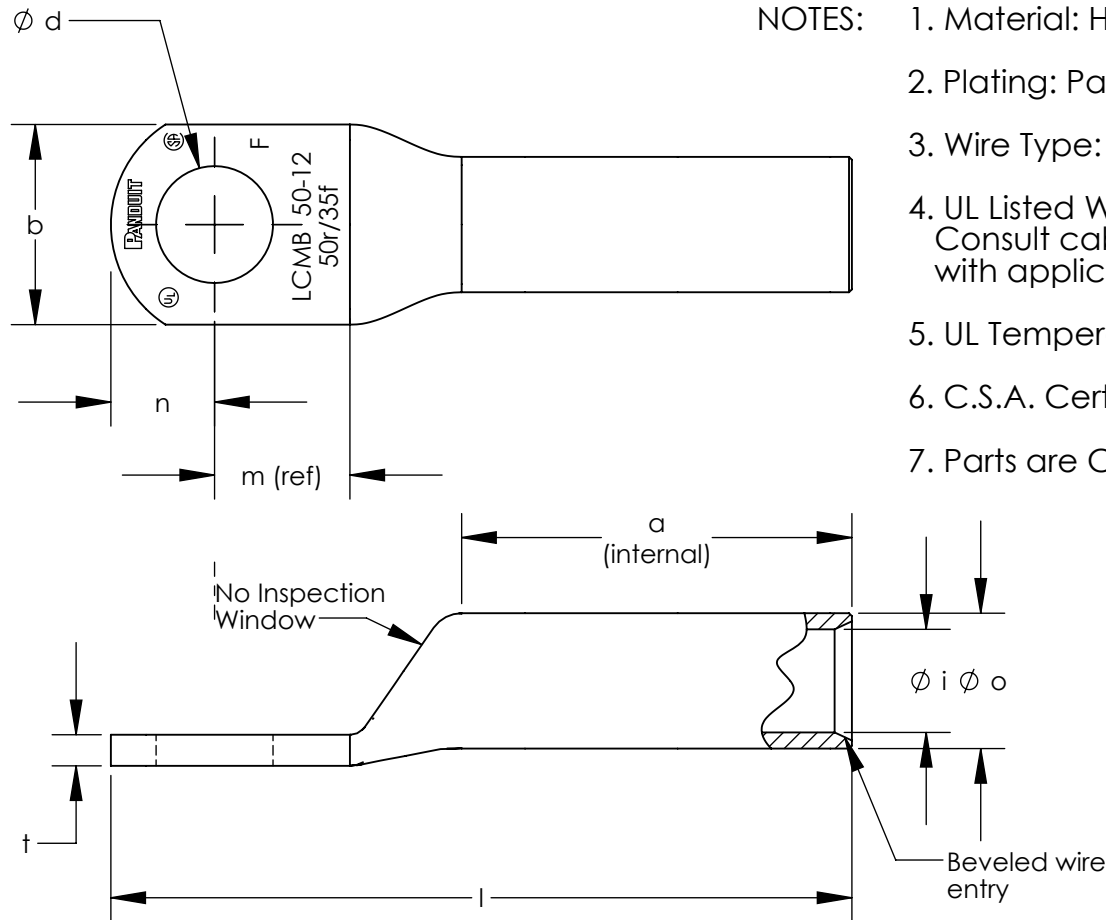


ALL DIMENSIONS ARE IN mm																	
Part Number	Class 2r Wire Size	Class 5f & 6f Wire Size	Stud Size	Wire Strip Length	Panduit Die Index No. For Class 2r Wire Circumferential Dies	Panduit Die Index No. For Class 5f & 6f Wire Circumferential Dies	Panduit Die Index No. For Class 5f & 6f Wire Nest/Indentor Dies	l ±2.76	o ±.50	i ±.50	a ±2.25	m (ref)	n ±2.25	d ±.50	b ±2.25	t	
LCMB35-6-Q	35mm ²	25mm ²	M6	34.4	P29	P29	----	57.3	10.40	8.20	32.8	12.3	8.5	6.60	15.5	2.05 ± .40	
LCMB35-8-Q	35mm ²	25mm ²	M8	34.4	P29	P29	----	57.3	10.40	8.20	32.8	12.3	8.5	9.00	15.5	2.05 ± .40	
LCMB35-10-Q	35mm ²	25mm ²	M10	34.4	P29	P29	----	57.3	10.40	8.20	32.8	12.3	8.5	11.00	15.5	2.05 ± .40	
LCMB35-12-Q	35mm ²	25mm ²	M12	34.4	P29	P29	----	63.3	10.40	8.20	32.8	14.5	11.5	14.00	21.5	1.50 ± .40	
LCMB50-6-E	50mm ²	35mm ²	M6	38.2	P37	P33	----	62.8	12.30	9.80	36.6	11.5	10.0	6.60	18.0	2.50 ± .40	
LCMB50-8-E	50mm ²	35mm ²	M8	38.2	P37	P33	----	62.8	12.30	9.80	36.6	11.5	10.0	9.00	18.0	2.50 ± .40	
LCMB50-10-E	50mm ²	35mm ²	M10	38.2	P37	P33	----	62.8	12.30	9.80	36.6	11.5	10.0	11.00	18.0	2.50 ± .40	
LCMB50-12-E	50mm ²	35mm ²	M12	38.2	P37	P33	----	66.3	12.30	9.80	36.6	14.0	11.0	14.00	23.0	1.80 ± .40	
LCMB70-8-X	70mm ²	50mm ²	M8	39.6	P45	P37	----	68.2	14.20	11.50	38.0	14.5	11.5	9.00	20.8	2.85 ± .40	
LCMB70-10-X	70mm ²	50mm ²	M10	39.6	P45	P37	----	68.2	14.20	11.50	38.0	14.5	11.5	11.00	20.8	2.85 ± .40	
LCMB70-12-X	70mm ²	50mm ²	M12	39.6	P45	P37	----	68.2	14.20	11.50	38.0	14.5	11.5	14.00	20.8	2.80 ± .40	
*LCMB95-6-X	95mm ²	70mm ²	M6	44.6	P54	P45	P62/4	79.0	16.50	13.50	43.0	15.0	13.5	6.60	24.5	3.05 ± .40	
LCMB95-8-X	95mm ²	70mm ²	M8	44.6	P54	P45	P62/4	79.0	16.50	13.50	43.0	15.0	13.5	9.00	24.5	3.05 ± .40	
LCMB95-10-X	95mm ²	70mm ²	M10	44.6	P54	P45	P62/4	79.0	16.50	13.50	43.0	15.0	13.5	11.00	24.5	3.05 ± .40	
LCMB95-12-X	95mm ²	70mm ²	M12	44.6	P54	P45	P62/4	79.0	16.50	13.50	43.0	15.0	13.5	14.00	24.5	3.00 ± .40	
LCMB95-16-X	95mm ²	70mm ²	M16	44.6	P54	P45	P62/4	79.0	16.50	13.50	43.0	15.0	13.5	18.00	24.5	2.90 ± .40	
LCMB120-8-X	120mm ²	95mm ²	M8	41.3	P62	P50	P76/4	80.2	18.60	15.20	39.7	15.5	14.5	9.00	27.5	3.50 ± .45	
LCMB120-10-X	120mm ²	95mm ²	M10	41.3	P62	P50	P76/4	80.2	18.60	15.20	39.7	15.5	14.5	11.00	27.5	3.50 ± .45	
LCMB120-12-X	120mm ²	95mm ²	M12	41.3	P62	P50	P76/4	80.2	18.60	15.20	39.7	15.5	14.5	14.00	27.5	3.50 ± .45	
LCMB120-16-X	120mm ²	95mm ²	M16	41.3	P62	P50	P76/4	80.2	18.60	15.20	39.7	15.5	14.5	18.00	27.5	3.40 ± .45	
LCMB150-8-X	150mm ²	120mm ²	M8	58.6	P66	----	P76/4	100.0	21.00	16.50	57.0	18.0	16.5	9.00	30.5	4.45 ± .45	
LCMB150-10-X	150mm ²	120mm ²	M10	58.6	P66	----	P76/4	100.0	21.00	16.50	57.0	18.0	16.5	11.00	30.5	4.45 ± .45	
LCMB150-12-X	150mm ²	120mm ²	M12	58.6	P66	----	P76/4	100.0	21.00	16.50	57.0	18.0	16.5	14.00	30.5	4.45 ± .45	
LCMB150-16-X	150mm ²	120mm ²	M16	58.6	P66	----	P76/4	100.0	21.00	16.50	57.0	18.0	16.5	18.00	30.5	4.30 ± .45	
LCMB150-20-X	150mm ²	120mm ²	M20	58.6	P66	----	P76/4	103.5	21.00	16.50	57.0	22.0	16.5	22.00	30.5	4.30 ± .45	

* CULUS LISTED WIRE CONNECTOR



- NOTES:
1. Material: High conductivity seamless copper tube.
 2. Plating: Parts are annealed and tin plated.
 3. Wire Type: Class 2r, 5f & 6f Stranded Copper per DIN VDE 0295, IEC 60228 and HD 383.
 4. UL Listed Wire Connector: Yes, for applications up to 35kv. Consult cable manufacturer for voltage stress relief instructions with applications greater than 2000 volts.
 5. UL Temperature Rating: 90° C
 6. C.S.A. Certified Wire Connector: Yes
 7. Parts are CE and tested per EN 61238-1:2003/IEC 61238-1:2003 Class B, with Class 2r wire 35mm² - 150mm².



REV	DATE	BY	CHK	APR	DESCRIPTION	ECN
01	7/15	JHNU	TLCO	RGB	ADDED LCMB95-6-X	12J036BI-JC
00	7/13	JHNU	TLCO	RGB	DRAWING RELEASED	12J036BI-JC

TITLE METRIC LUGS - LCMB ONE HOLE SERIES 35-150mm LONG BARREL CUSTOMER DRAWING			
ITEM REVISION NAME 12J036BI/01		PANDUIT	
DATASET FILE NAME 12J036BI-JC/01.SLDDRW			
UNLESS OTHERWISE SPECIFIED, DIMENSIONAL TOLERANCES ARE: IN [mm]			
.X ± .XXX ±		MATERIAL SEE NOTES	
.XX ± ANGLES ±		DRAWING NUMBER 12J036BI-JC	
DRAWN BY JHNU		THIRD ANGLE PROJECTION	
DATE 7/13	CHK TLCO	SCALE NONE	SHEET 1 OF 1
			SIZE B

X-ON Electronics

Largest Supplier of Electrical and Electronic Components

Click to view similar products for [Terminals](#) category:

Click to view products by [Panduit](#) manufacturer:

Other Similar products are found below :

[HT-13-10](#) [71M-250-32-NB](#) [01-2065-1-0216](#) [00581P0075](#) [M10-10RX](#) [M10BCK](#) [60205-1](#) [604200-1](#) [60598-1-CUT-TAPE](#) [60617-1-C](#) [60873-1](#) [M14-516R/SK](#) [M14-6RSX](#) [M18-10FLX](#) [M18-8FBX](#) [M18-8R/LX](#) [M18BCK](#) [61314-6-C](#) [61-S](#) [61-SN-A](#) [62-NBM-A](#) [63-S](#) [640179-1](#) [640917-2-CUT-TAPE](#) [6501550002](#) [66107-2-C](#) [696683-1](#) [696834-1](#) [696861-1](#) [696931-1](#) [696999-1](#) [M8-516RK](#) [M86700006](#) [MA250DMFMX-A](#) [701-2007](#) [701-2307](#) [701-7761-03](#) [70F-110-32-PB](#) [718-N-A](#) [71M-187-20-NBL](#) [71M-250-32-NBL](#) [72F-187-20-NBL](#) [72M-250-32-NBL](#) [7310](#) [73F-250-32](#) [73F-250-32-NBL](#) [73F-250-32-NL](#) [F14-10C](#) [F-1M](#) [751-250](#)