

THIS COPY IS PROVIDED ON A RESTRICTED BASIS AND IS NOT TO BE USED IN ANY WAY DETRIMENTAL TO THE INTERESTS OF PANDUIT CORP.

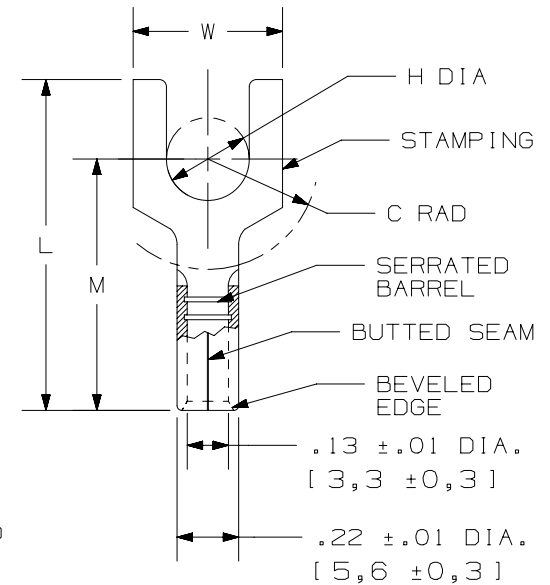
PANDUIT PART #	STUD SIZE		DIMENSIONS in. [mm]				
	ENGLISH	METRIC	L ± .03 [0,8]	W ± .01 [0,3]	C ± .015 [0,4]	M ± .03 [0,8]	H ± .01 [0,3]
E10-6FB	#6	M3	.75 [19,1]	.31 [7,9]	.22 [5,6]	.55 [14,0]	.15 [3,8]
E10-8FB	#8	M4	.78 [19,8]	.37 [9,4]	.22 [5,6]	.55 [14,0]	.17 [4,3]
E10-10FB	#10	M5	.78 [19,8]	.37 [9,4]	.23 [5,8]	.55 [14,0]	.20 [5,1]
E10-14FB	1/4"	M6	.89 [22,6]	.50 [12,7]	.30 [7,6]	.60 [15,2]	.27 [6,9]

UL & CSA TOOLS
CT-100A CT-200 CT-600-A (CT-570CH) CT-1570 CT-1701 (P10) CT-2500 (CT-2570CH)

PANDUIT APPROVED TOOLS
CT-160 CT-260

NOTES:

- UL LISTED & CSA CERTIFIED FOR:
 - A. #12-10 AWG [4,0-6,0 mm²] SOLID OR STRANDED COPPER WIRE
 - B. 302°F [150°C] MAX. OPERATING TEMPERATURE
 - C. 2000 VOLTS MAX
- MATERIAL:
 - A. STAMPING: .04" [1,0] THK COPPER, TIN PLATED
- WIRE STRIP LENGTH: 9/32" ^{+1/32}₋₀ [7,1mm ^{+0,8}₋₀]
- SEE www.panduit.com FOR PACKAGE QUANTITIES
- DIMENSIONS IN BRACKETS ARE METRIC EQUIVALENT



TITLE	
STRONGHOLD FORK TERMINAL NON-INSULATED, BUTTED SEAM #12-10 AWG	
CUSTOMER DRAWING	
ITEM REVISION NAME	00123SHK/00
DATASET FILE NAME	00123SHK_DC/00
UNLESS OTHERWISE SPECIFIED, DIMENSIONAL TOLERANCES ARE: IN [mm]	MATERIAL: SEE NOTES
.X ± .XX ±	.XXX ± ANGLES ±
THIRD ANGLE PROJECTION	
DRAWN BY	DRAWING NUMBER: SH41256
JHNU	DATE
2/18	SCALE
TMR	N.T.S.
SHEET 1 OF 1	SIZE
A	A

REV	DATE	BY	CHK	APR	DESCRIPTION	ECN
00	02/18	JHNU	TMR	RGB	RELEASED	00123SH

D10100DA/12

X-ON Electronics

Largest Supplier of Electrical and Electronic Components

Click to view similar products for [Terminals](#) category:

Click to view products by [Panduit](#) manufacturer:

Other Similar products are found below :

[HT-13-10](#) [71M-250-32-NB](#) [01-2065-1-0216](#) [00581P0075](#) [M10-10RX](#) [M10BCK](#) [60205-1](#) [604200-1](#) [60598-1-CUT-TAPE](#) [60617-1-C](#) [60873-1](#) [M14-516R/SK](#) [M14-6RSX](#) [M18-10FLX](#) [M18-8FBX](#) [M18-8R/LX](#) [M18BCK](#) [61314-6-C](#) [61-S](#) [61-SN-A](#) [62-NBM-A](#) [63-S](#) [640179-1](#) [640917-2-CUT-TAPE](#) [6501550002](#) [66107-2-C](#) [696683-1](#) [696834-1](#) [696861-1](#) [696931-1](#) [696999-1](#) [M8-516RK](#) [M86700006](#) [MA250DMFMX-A](#) [701-2007](#) [701-2307](#) [701-7761-03](#) [70F-110-32-PB](#) [718-N-A](#) [71M-187-20-NBL](#) [71M-250-32-NBL](#) [72F-187-20-NBL](#) [72M-250-32-NBL](#) [7310](#) [73F-250-32](#) [73F-250-32-NBL](#) [73F-250-32-NL](#) [F14-10C](#) [F-1M](#) [751-250](#)