

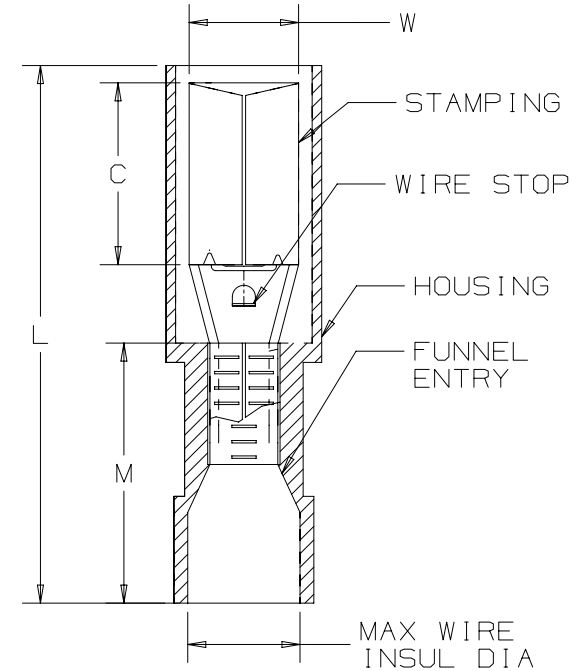
THIS COPY IS PROVIDED ON A RESTRICTED BASIS AND IS NOT TO BE USED IN ANY WAY DETRIMENTAL TO THE INTERESTS OF PANDUIT CORP.

| PANDUIT PART # | WIRE RANGE AWG [mm <sup>2</sup> ] | COLOR | DIMENSIONS in. [mm] |               |               |               | MAX WIRE INSUL DIA | WIRE STRIP LENGTH in [mm]<br>+ 1/32 [0.8]<br>-0 | TOOLS    |
|----------------|-----------------------------------|-------|---------------------|---------------|---------------|---------------|--------------------|---|----------|
|                |                                   |       | L ± .04 [1,1]       | W ± .01 [0,3] | C ± .02 [0,4] | M ± .02 [0,6] |                    |   |          |
| EBNF18-4FIB    | #22-16 [0.5-1.5]                  | RED   | .99 [25.2]          | .15 [3.9]     | .28 [7.0]     | .43 [11.0]    | .145 [3.7]         | 9/32" [6.8]                                     | KST2000C |
| EBNF14-4FIB*   | #16-14 [1.5-2.5]                  | BLUE  | .99 [25.2]          | .15 [3.9]     | .28 [7.0]     | .43 [11.0]    | .165 [4.2]         |   |          |

\*NOT UL RECOGNIZED

NOTES:

- UL RECOGNIZED FOR:
  - A. STRANDED COPPER WIRE ONLY - INTERNAL WIRING
  - B. NOT FOR INTERRUPTING CURRENT
  - C. 185°F (85°C) MAX TEMP RATING
  - D. 600V MAX VOLTAGE RATING
- MATERIAL:
  - A. STAMPING - .016" [0.4] THICK BRASS, TIN PLATED
  - B. HOUSING - NYLON
- SEE WWW.PANDUIT.COM FOR PACKAGE QUANTITIES
- DIMENSIONS IN BRACKETS ARE METRIC EQUIVALENT.



|   |             |   |       |
|---|-------------|---|-------|
| TITLE   |             | STRONGHOLD FEMALE BULLET CONNECTORS (156 SERIES)<br>FULLY NYLON INSULATED, #22-14 AWG |       |
| CUSTOMER DRAWING  |             |   |       |
| ITEM REVISION NAME  | 00123SSP/00 | <b>PANDUIT</b>  |       |
| DATASET FILE NAME   | 00123SSP/00 |   |       |
| UNLESS OTHERWISE SPECIFIED, DIMENSIONAL TOLERANCES ARE: IN [mm] |             | MATERIAL:   |       |
| .x ± .1 [2.54]      .xxx ± .005 [.127]                          |             | SEE NOTES   |       |
| .xx ± .01 [.25]      ANGLES ± 5°                                |             | DRAWING NUMBER:   |       |
| THIRD ANGLE PROJECTION  |             | 00123SSP-DC   |       |
| DRAWN BY  | DATE        | CHK   | SCALE |
| JHNU  | 2/18        |   | NONE  |
| REV   | DATE        | BY  | CHK   |
|   |             |   |       |
| DESCRIPTION   |             | ECN   |       |
|   |             |   |       |
| SHT 1 OF 1  |             | A   |       |

D10100DA/20

## X-ON Electronics

Largest Supplier of Electrical and Electronic Components

*Click to view similar products for [Terminals](#) category:*

*Click to view products by [Panduit](#) manufacturer:*

Other Similar products are found below :

[HT-13-10](#) [71M-250-32-NB](#) [01-2065-1-0216](#) [00581P0075](#) [M10-10RX](#) [M10BCK](#) [60205-1](#) [604200-1](#) [60598-1-CUT-TAPE](#) [60617-1-C](#) [60873-1](#) [M14-516R/SK](#) [M14-6RSX](#) [M18-10FLX](#) [M18-8FBX](#) [M18-8R/LX](#) [M18BCK](#) [61314-6-C](#) [61-S](#) [61-SN-A](#) [62-NBM-A](#) [63-S](#) [640179-1](#) [640917-2-CUT-TAPE](#) [6501550002](#) [66107-2-C](#) [696683-1](#) [696834-1](#) [696861-1](#) [696931-1](#) [696999-1](#) [M8-516RK](#) [M86700006](#) [MA250DMFMX-A](#) [701-2007](#) [701-2307](#) [701-7761-03](#) [70F-110-32-PB](#) [718-N-A](#) [71M-187-20-NBL](#) [71M-250-32-NBL](#) [72F-187-20-NBL](#) [72M-250-32-NBL](#) [7310](#) [73F-250-32](#) [73F-250-32-NBL](#) [73F-250-32-NL](#) [F14-10C](#) [F-1M](#) [751-250](#)