

THIS COPY IS PROVIDED ON A RESTRICTED BASIS AND IS NOT TO BE USED IN ANY WAY DETRIMENTAL TO THE INTERESTS OF PANDUIT CORP.

PANDUIT PART #	WIRE RANGE AWG [mm ²]	TAB SIZE INCH [mm]	DIMENSIONS in. [mm]		
			L± .03 [0,8]	H± .01 [0,3]	W± .01 [0,3]
ED18-250	#22-18 [0,5-1,0]	.250 X .032 [6,3 X 0,8]	.66 [16,8]	.12 [3,0]	.30 [7,6]
ED14-250*	#16-14 [1,5-2,5]	.250 X .032 [6,3 X 0,8]	.66 [16,8]	.12 [3,0]	.30 [7,6]



LISTED
20H3
E78522



CERTIFIED
LR31212

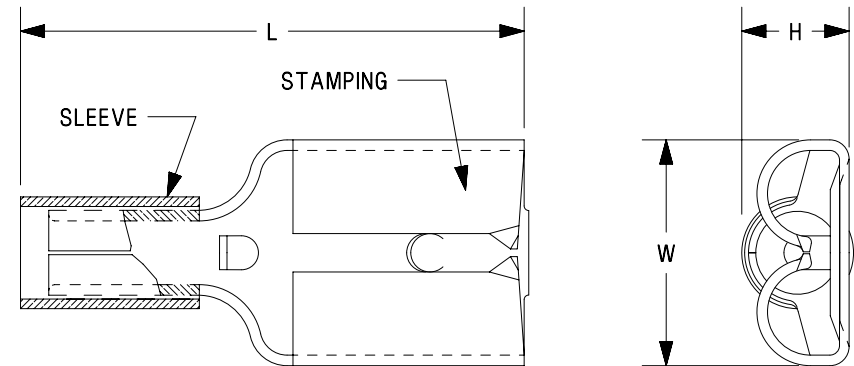


RECOGNIZED
E78522

* UL RECOGNIZED ONLY

NOTES:

- USED FOR:
 - A. STRANDED COPPER WIRE ONLY
 - B. 302°F [150°C] MAX OPERATING TEMPERATURE
 - C. 2000V MAX VOLTAGE
- MATERIAL:
 - A. STAMPING: .016 [0,41] TIN PLATED BRASS
 - B. SLEEVE: TIN PLATED BRASS
- INSTALLATION TOOLS:
 - A. UL LISTED AND CSA CERTIFIED: CT-100A, CT-200, CT-570, CT-1570, CT-2457CH, CT-2500 W/CT-2570CH
 - B. UL RECOGNIZED: CT-100A, CT-200, CT-600-A W/CT-570CH, CT-1570, CT-2457CH, CT-2500 W/CT-2570CH
- WIRE STRIP LENGTH: $9/32'' \begin{smallmatrix} +1/32 \\ -0 \end{smallmatrix} [7,1\text{mm} \begin{smallmatrix} +0,8 \\ -0 \end{smallmatrix}]$
- SEE WWW.PANDUIT.COM FOR PACKAGE QUANTITIES INDICATED BY PART NUMBER SUFFIX
- DIMENSIONS IN BRACKETS ARE METRIC EQUIVALENT



TITLE STRONGHOLD FEMALE DISCONNECT (250 SERIES) NON-INSULATED, SLEEVED BARREL #22-14 AWG CUSTOMER DRAWING				
ITEM REVISION NAME		00123SHD/00		
DATASET FILE NAME		00123SHD_DC_00A		
UNLESS OTHERWISE SPECIFIED, DIMENSIONAL TOLERANCES ARE: IN [mm]				MATERIAL: SEE NOTES
.x ± .1 [2.54]		.xxx ± .005 [0.127]		
.xx ± .01 [0.25]		ANGLES ± 5°		DRAWING NUMBER: SH41304
		THIRD ANGLE PROJECTION		
DRAWN BY	DATE	CHK	SCALE	SIZE
TMR	10.10.17	JHNU	N.T.S.	A

00	10.10.17	TMR	JHNU	RGB	DRAWING RELEASED	00123SH
REV	DATE	BY	CHK	APR	DESCRIPTION	ECN

D101000DA/12

X-ON Electronics

Largest Supplier of Electrical and Electronic Components

Click to view similar products for [Terminals](#) category:

Click to view products by [Panduit](#) manufacturer:

Other Similar products are found below :

[HT-13-10](#) [71M-250-32-NB](#) [01-2065-1-0216](#) [00581P0075](#) [M10-10RX](#) [M10BCK](#) [60205-1](#) [604200-1](#) [60598-1-CUT-TAPE](#) [60617-1-C](#) [60873-1](#) [M14-516R/SK](#) [M14-6RSX](#) [M18-10FLX](#) [M18-8FBX](#) [M18-8R/LX](#) [M18BCK](#) [61314-6-C](#) [61-S](#) [61-SN-A](#) [62-NBM-A](#) [63-S](#) [640179-1](#) [640917-2-CUT-TAPE](#) [6501550002](#) [66107-2-C](#) [696683-1](#) [696834-1](#) [696861-1](#) [696931-1](#) [696999-1](#) [M8-516RK](#) [M86700006](#) [MA250DMFMX-A](#) [701-2007](#) [701-2307](#) [701-7761-03](#) [70F-110-32-PB](#) [718-N-A](#) [71M-187-20-NBL](#) [71M-250-32-NBL](#) [72F-187-20-NBL](#) [72M-250-32-NBL](#) [7310](#) [73F-250-32](#) [73F-250-32-NBL](#) [73F-250-32-NL](#) [F14-10C](#) [F-1M](#) [751-250](#)