

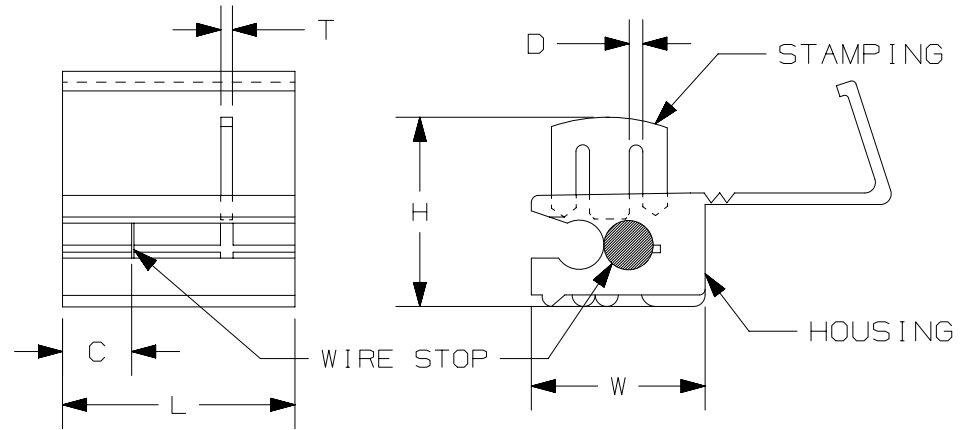
THIS COPY IS PROVIDED ON A RESTRICTED BASIS AND IS NOT TO BE USED IN ANY WAY DETRIMENTAL TO THE INTERESTS OF PANDUIT CORP.

PANDUIT PART #	WIRE RANGE AWG [mm ²]	HOUSING COLOR	DIMENSIONS in. [mm]					
			L ± .02 [0.6]	W ± .02 [0.6]	H ± .02 [0.6]	C ± .04 [1.1]	D ± .006 [0.15]	T ± .01 [0.3]
EQSP18	#22-18 [0.5-0.75]	RED	.79 [20.0]	.46 [11.8]	.48 [12.3]	.14 [3.5]	.017 [.43]	.031 [.8]
EQSP14*	#18-14 [0.75-2.5]	BLUE	.77 [19.6]	.47 [12.0]	.48 [12.3]	.14 [3.5]	.028 [.70]	.031 [.8]
EQSP10	#12-10 [4.0-6.0]	YELLOW	.81 [20.5]	.60 [15.2]	.66 [16.7]	.24 [6.0]	.047 [1.20]	.035 [.9]

*NOT UL LISTED

NOTES:

- USED FOR:
 - EQSP18 & EQSP14 SOLID AND STRANDED COPPER WIRE
 - EQSP10 STRANDED COPPER WIRE ONLY
 - 221°F [105°C] MAX. OPERATING TEMPERATURE
 - 600 V. MAX VOLTAGE RATING
- MATERIAL:
 - STAMPING: BRASS, TIN PLATED
 - HOUSING: POLYPROPYLENE
- SEE www.panduit.com FOR PACKAGE QUANTITIES
- DIMENSIONS IN BRACKETS ARE METRIC EQUIVALENT



LISTED
20U0
E52164

TITLE STRONGHOLD QUICK SPLICE CONNECTOR INSULATION DISPLACEMENT, #22-10 AWG		CUSTOMER DRAWING	
ITEM REVISION NAME 00123SSH/00		PANDUIT	
DATASET FILE NAME 00123SSH/00			
UNLESS OTHERWISE SPECIFIED, DIMENSIONAL TOLERANCES ARE: IN [mm]		MATERIAL: SEE NOTES	
.x ± .1 [2.54] .xxx ± .005 [.127] .xx ± .01 [.25] ANGLES ± 5°		DRAWING NUMBER: 00123SSH-DC	
THIRD ANGLE PROJECTION		DRAWING NUMBER: 00123SSH-DC	
DRAWN BY JHNU	DATE -	CHK -	SCALE N.T.S.
REV		SHT 1 OF 1	
DESCRIPTION		A	

00	2/18	JHNU	TMR	RGB	DRAWING RELEASED	00123SS
REV	DATE	BY	CHK	APR	DESCRIPTION	ECN

D10100DA/15

X-ON Electronics

Largest Supplier of Electrical and Electronic Components

Click to view similar products for [Terminals](#) category:

Click to view products by [Panduit](#) manufacturer:

Other Similar products are found below :

[HT-13-10](#) [71M-250-32-NB](#) [01-2065-1-0216](#) [00581P0075](#) [M10-10RX](#) [M10BCK](#) [60205-1](#) [604200-1](#) [60598-1-CUT-TAPE](#) [60617-1-C](#) [60873-1](#) [M14-516R/SK](#) [M14-6RSX](#) [M18-10FLX](#) [M18-8FBX](#) [M18-8R/LX](#) [M18BCK](#) [61314-6-C](#) [61-S](#) [61-SN-A](#) [62-NBM-A](#) [63-S](#) [640179-1](#) [640917-2-CUT-TAPE](#) [6501550002](#) [66107-2-C](#) [696683-1](#) [696834-1](#) [696861-1](#) [696931-1](#) [696999-1](#) [M8-516RK](#) [M86700006](#) [MA250DMFMX-A](#) [701-2007](#) [701-2307](#) [701-7761-03](#) [70F-110-32-PB](#) [718-N-A](#) [71M-187-20-NBL](#) [71M-250-32-NBL](#) [72F-187-20-NBL](#) [72M-250-32-NBL](#) [7310](#) [73F-250-32](#) [73F-250-32-NBL](#) [73F-250-32-NL](#) [F14-10C](#) [F-1M](#) [751-250](#)