

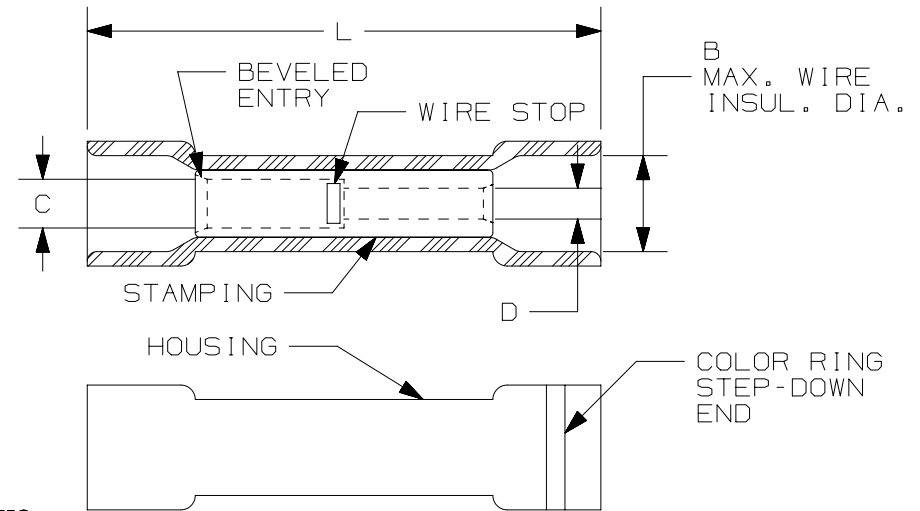
THIS COPY IS PROVIDED ON A RESTRICTED BASIS AND IS NOT TO BE USED IN ANY WAY DETRIMENTAL TO THE INTERESTS OF PANDUIT CORP.

| PANDUIT PART # | WIRE SIZE AWG [mm ²] | | HOUSING COLOR | COLOR RING STEP-DOWN END | DIMENSIONS in. [mm] | | | | WIRE STRIP LENGTH in [mm] +1/32 [0,8] -0 | TOOLS | TOOL POCKET |
|----------------|----------------------------------|-------------------|---------------|--------------------------|---------------------|---------------|---------------|-------------|--|------------|---------------|
| | STANDARD END | STEP-DOWN END | | | L ± .04 [1.1] | C ± .01 [0.3] | D ± .01 [0.3] | B | | | |
| ESV14-ESV18 | #16-14 [1,5-2,5] | #22-18 [0,5-0,75] | BLUE | RED | .96 [24.5] | .09 [2.3] | .07 [1.7] | .165 [4.2] | 9/32 [6,8] | KST2000A | BLUE #16-14 |
| ESV10-ESV18 | #12-10 [4,0-6,0] | #22-18 [0,5-0,75] | YELLOW | RED | 1.22 [31.0] | .13 [3.4] | .07 [1.7] | .236 [6.0] | | | YELLOW #12-10 |
| ESV10-ESV14 | #12-10 [4,0-6,0] | #16-14 [1,5-2,5] | YELLOW | BLUE | 1.22 [31.0] | .13 [3.4] | .09 [2.3] | .236 [6.0] | | | YELLOW #12-10 |
| ESV8-ESV14* | #8 [8,0] | #16-14 [1,5-2,5] | RED | BLUE | 1.41 [35.7] | .18 [4.5] | .09 [2.3] | .322 [8.2] | 3/8 [9,6] | KST-HDC38A | #8 [8,0] |
| ESV8-ESV10* | #8 [8,0] | #12-10 [4,0-6,0] | RED | YELLOW | 1.41 [35.7] | .18 [4.5] | .13 [3.4] | .322 [8.2] | | | #8 [8,0] |
| ESV6-ESV8 | #6 [14,0] | #8 [8,0] | BLUE | RED | 1.77 [45.0] | .23 [5.9] | .18 [4.5] | .401 [10.2] | 15/32 [12,0] | | #6 [14,0] |

*NOT UL LISTED

NOTES:

- USED FOR:
 - A. STRANDED COPPER WIRE ONLY
 - B. 167°F [75°C] MAX. OPERATING TEMPERATURE
 - C. 600V MAX VOLTAGE RATING
- MATERIAL:
 - A. STAMPING: COPPER TUBE, TIN PLATED
 - B. HOUSING: VINYL
- SEE WWW.PANDUIT FOR PACKAGE QUANTITIES
- DIMENSIONS IN BRACKETS ARE METRIC EQUIVALENT



LISTED
2000
E52164

| | | | |
|--|-----------|--------------------------------|-----------------|
| TITLE STRONGHOLD STEP-DOWN BUTT SPLICES VINYL INSULATED, #22-6 AWG | | CUSTOMER DRAWING | |
| ITEM REVISION NAME 00123SSD/00 | | PANDUIT | |
| DATASET FILE NAME 00123SSD_DC/00 | | | |
| UNLESS OTHERWISE SPECIFIED, DIMENSIONAL TOLERANCES ARE: IN [mm] .x ± .1 [2.54] .xxx ± .005 [0.127] .xx ± .01 [0.25] ANGLES ± 5° | | MATERIAL: SEE NOTES | |
| DRAWING NUMBER: 00123SSD-DC | | DRAWING NUMBER: 00123SSD-DC | |
| DRAWN BY JHNU | DATE - | CHK - | SCALE N.T.S. |
| SHT 1 OF 1 | | A | |

| REV | DATE | BY | CHK | APR | DESCRIPTION | ECN |
|-----|------|------|-----|-----|------------------|---------|
| 00 | 2/18 | JHNU | TMR | RGB | DRAWING RELEASED | 00123SS |

D10100DA/15

X-ON Electronics

Largest Supplier of Electrical and Electronic Components

Click to view similar products for [Terminals](#) category:

Click to view products by [Panduit](#) manufacturer:

Other Similar products are found below :

[HT-13-10](#) [71M-250-32-NB](#) [01-2065-1-0216](#) [00581P0075](#) [M10-10RX](#) [M10BCK](#) [60205-1](#) [604200-1](#) [60598-1-CUT-TAPE](#) [60617-1-C](#) [60873-1](#) [M14-516R/SK](#) [M14-6RSX](#) [M18-10FLX](#) [M18-8FBX](#) [M18-8R/LX](#) [M18BCK](#) [61314-6-C](#) [61-S](#) [61-SN-A](#) [62-NBM-A](#) [63-S](#) [640179-1](#) [640917-2-CUT-TAPE](#) [6501550002](#) [66107-2-C](#) [696683-1](#) [696834-1](#) [696861-1](#) [696931-1](#) [696999-1](#) [M8-516RK](#) [M86700006](#) [MA250DMFMX-A](#) [701-2007](#) [701-2307](#) [701-7761-03](#) [70F-110-32-PB](#) [718-N-A](#) [71M-187-20-NBL](#) [71M-250-32-NBL](#) [72F-187-20-NBL](#) [72M-250-32-NBL](#) [7310](#) [73F-250-32](#) [73F-250-32-NBL](#) [73F-250-32-NL](#) [F14-10C](#) [F-1M](#) [751-250](#)