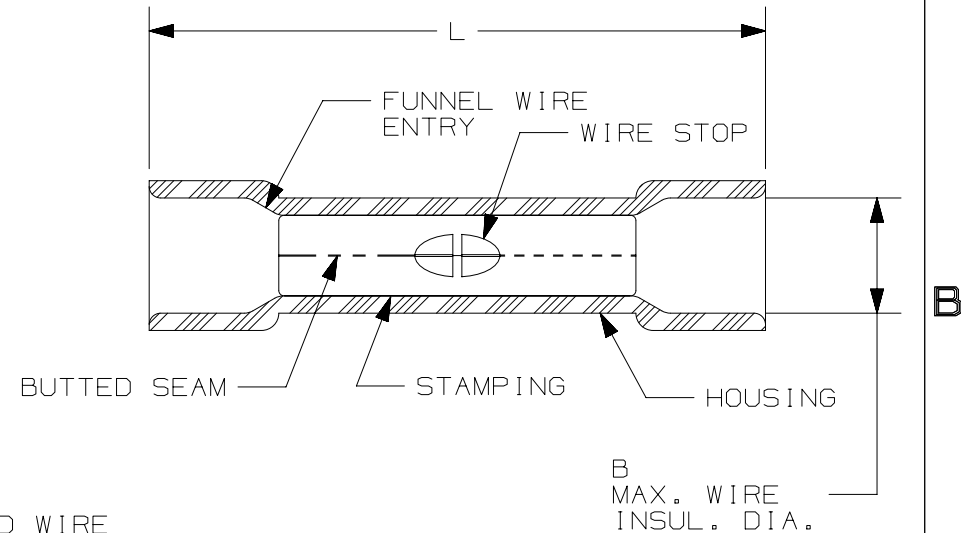


THIS COPY IS PROVIDED ON A RESTRICTED BASIS AND IS NOT TO BE USED IN ANY WAY DETRIMENTAL TO THE INTERESTS OF PANDUIT CORP.

PANDUIT PART #	WIRE SIZE AWG [mm ²]	COLOR	DIMENSIONS in. [mm]	
			L± .03 [0,8]	B± .01 [0,3]
ESV18BX	#22-18 [0,5-1,0]	RED	1.03 [26,2]	.17 [4,3]
ESV14BX	#16-14 [1,5-2,5]	BLUE	1.04 [26,4]	.20 [5,1]
ESV10BX	#12-10 [4,0-6,0]	YELLOW	1.18 [30,0]	.25 [6,4]



NOTES:

- USED FOR:
 - A. SOLID OR STRANDED COPPER WIRE
 - B. 221°F [105°C] MAX OPERATING TEMPERATURE
 - C. 600V MAX VOLTGE RATING
 - D. ESV10BX 300V MAX VOLTAGE RATING WITH 10 AWG SOLID WIRE
- INSTALLATION TOOLS: CT-100A, CT-160, CT-260, CT-1550, CT-1551, CT-600A (CT-550CH), CT-2500 (CT-2550CH)
 - A. #22-18 AWG [0,5-1,0 mm²]: CT-100A, CT-160, CT-260, CT-400, CT-600A (CT-550CH), CT-2500 (CT-2550CH)
 - B. #16-14 AWG [1,5-2,5 mm²]: CT-100A, CT-160, CT-260, CT-400, CT-460, CT-600-A, CT-2500
 - C. #12-10 [4,0-6,0 mm²] STRANDED AND #12 AWG SOLID COPPER WIRE WITH CT-1550 & CT-1551 TOOLS: CT-100A, CT-160, CT-260, CT-460, CT-600-A (CT-550CH), CT-2500 (CT-2550CH)
- WIRE STRIP LENGTH: 5/16" ^{+1/32}/₋₀ [7,9mm ^{+0,8}/₋₀]
- MATERIAL:
 - A. STAMPING (#22-18 & #16-14): .03" [0,8] THK COPPER, TIN PLATED
 - B. STAMPING (#12-10): .04" [1,0] THK COPPER, TIN PLATED
 - C. HOUSING: VINYL
- SEE www.panduit.com FOR PACKAGE QUANTITIES INDICATED BY PART NUMBER SUFFIX
- DIMENSIONS IN BRACKETS ARE METRIC EQUIVALENT



LISTED
587H
E52164



CERTIFIED
LR31212

TITLE STRONGHOLD BUTT SPLICE, EXPANDED DIAMETER VINYL INSULATED, BUTTED SEAM #22-10 AWG		CUSTOMER DRAWING	
ITEM REVISION NAME		00123SHC/00	
DATASET FILE NAME		00123SHC_DC/00A	
UNLESS OTHERWISE SPECIFIED, DIMENSIONAL TOLERANCES ARE: IN [mm]		MATERIAL: SEE NOTES	
.x ± .1 [2.54] .xxx ± .005 [0.127]		DRAWING NUMBER: SH41181	
.xx ± .01 [0.25] ANGLES ± 5°		THIRD ANGLE PROJECTION	
DRAWN BY	DATE	CHK	SCALE
TMR	10.10.17	JHNU	N.T.S.
REV	DATE	BY	CHK
00	10.10.17	TMR	JHNU
DESCRIPTION		ECN	
DRAWING RELEASED		00123SH	
SHT 1 OF 1		A	

D10100DA/15

X-ON Electronics

Largest Supplier of Electrical and Electronic Components

Click to view similar products for [Terminals](#) category:

Click to view products by [Panduit](#) manufacturer:

Other Similar products are found below :

[HT-13-10](#) [71M-250-32-NB](#) [01-2065-1-0216](#) [00581P0075](#) [M10-10RX](#) [M10BCK](#) [60205-1](#) [604200-1](#) [60598-1-CUT-TAPE](#) [60617-1-C](#) [60873-1](#) [M14-516R/SK](#) [M14-6RSX](#) [M18-10FLX](#) [M18-8FBX](#) [M18-8R/LX](#) [M18BCK](#) [61314-6-C](#) [61-S](#) [61-SN-A](#) [62-NBM-A](#) [63-S](#) [640179-1](#) [640917-2-CUT-TAPE](#) [6501550002](#) [66107-2-C](#) [696683-1](#) [696834-1](#) [696861-1](#) [696931-1](#) [696999-1](#) [M8-516RK](#) [M86700006](#) [MA250DMFMX-A](#) [701-2007](#) [701-2307](#) [701-7761-03](#) [70F-110-32-PB](#) [718-N-A](#) [71M-187-20-NBL](#) [71M-250-32-NBL](#) [72F-187-20-NBL](#) [72M-250-32-NBL](#) [7310](#) [73F-250-32](#) [73F-250-32-NBL](#) [73F-250-32-NL](#) [F14-10C](#) [F-1M](#) [751-250](#)