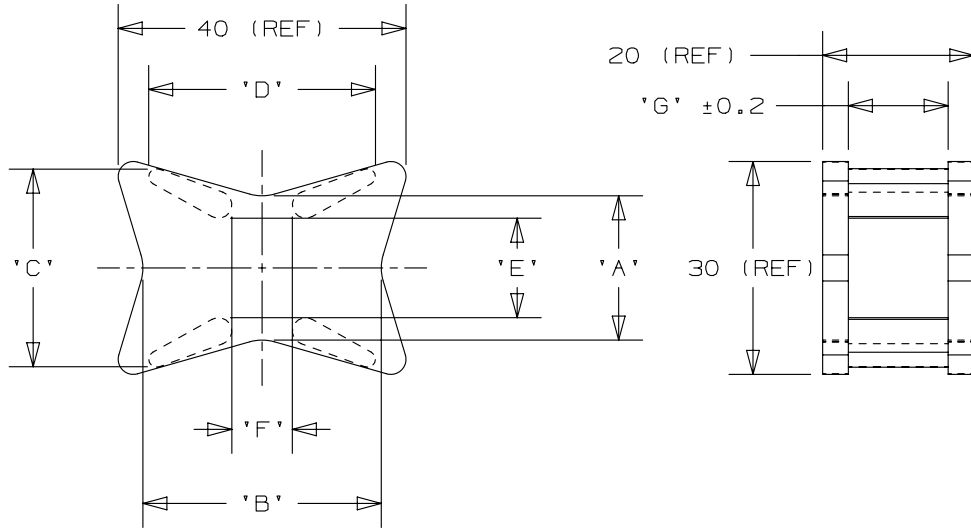


2

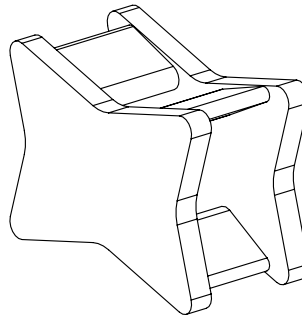
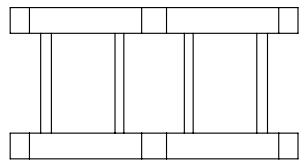
1

THIS COPY IS PROVIDED ON A RESTRICTED BASIS AND IS NOT TO BE USED IN ANY WAY DETRIMENTAL TO THE INTERESTS OF PANDUIT CORP.

PANDUIT PART NO.	DIMENSIONS							WEIGHT grams / 100 pcs
	'A'	'B'	'C'	'D'	'E'	'F'	'G'	
CSEH15A30	18.6	31	26.3	29.7	11.2	8	13.1	833



- NOTES:
- FOR USE WITH PANDUIT CABLE TIE TYPE:
 M- MINATURE I- INTERMEDIATE
 S- STANDARD H- HEAVY
 EH- EXTRA HEAVY
 - SEE www.panduit.com FOR CURRENT PART NUMBER SUFFIX DESIGNATION, PACKAGE SIZE AND PART COLOR.



TITLE				CABLE SPACER			
ITEM REVISION NAME				10B015IV/00			
DATASET FILE NAME				10B015IV_DC/00 - GB1932BV_REV01			
UNLESS OTHERWISE SPECIFIED, DIMENSIONAL TOLERANCES ARE: IN [mm]				MATERIAL:			
± 0.5 mm				SEE NOTE 1			
DRAWN BY				DRAWING NUMBER:			
JAD				GB1932BV			
DATE				THIRD ANGLE PROJECTION			
4/28/03				SHT 1 OF 1			
CHK				SCALE			
NONE				SIZE			
A4							

REV	DATE	BY	CHK	APR	DESCRIPTION	ECN
1	3/19/13	BWG	JADE	PBC	DIMENSIONS C, D, E AND G REVISED. REVISED NOTES.	GB1932BV

2

1

X-ON Electronics

Largest Supplier of Electrical and Electronic Components

Click to view similar products for [Cable Mounting & Accessories](#) category:

Click to view products by [Panduit](#) manufacturer:

Other Similar products are found below :

[HP-4N](#) [582603-1](#) [009333-000](#) [727844N003](#) [809090N001](#) [8109](#) [843188-000](#) [843459N001](#) [843460N003](#) [8666](#) [967279N002](#) [GPQC1/0](#) [DB-11](#) [1300830208](#) [1300840039](#) [1300900026](#) [1300990052](#) [1301740005](#) [1301800121](#) [1301800416](#) [1300830184](#) [1300990149](#) [1301580036](#) [1301720103](#) [1301720135](#) [1301720152](#) [1301720157](#) [1301740009](#) [1301770011](#) [1301850553](#) [1301860939](#) [1302000074](#) [1302264431](#) [1337706-2](#) [APA18-AK](#) [MTX6UTPSRC-C](#) [1-787307-1](#) [185491N001](#) [HP-6N](#) [C-202-C](#) [202C221-13-0](#) [OMTM-S10-C0](#) [205339-4](#) [CA7308-000](#) [8S23-75FR-CS8184](#) [2684](#) [9648](#) [3089](#) [988382-000](#) [A0270164](#)