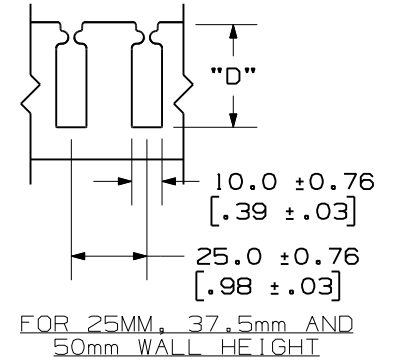
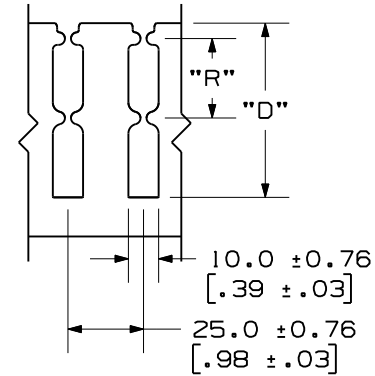
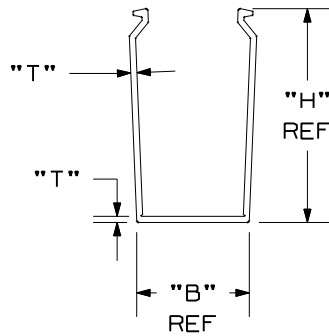
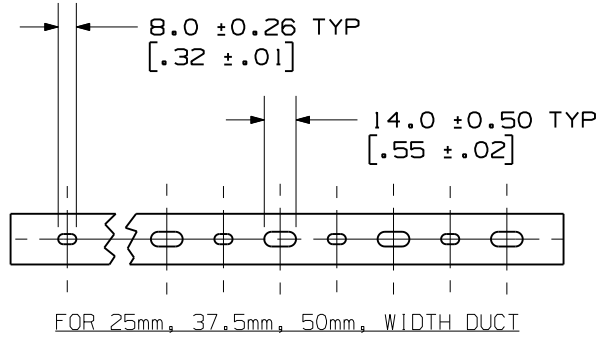


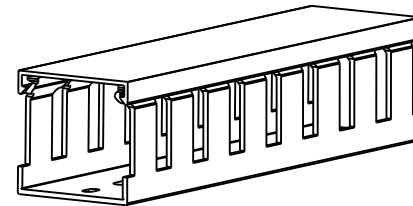
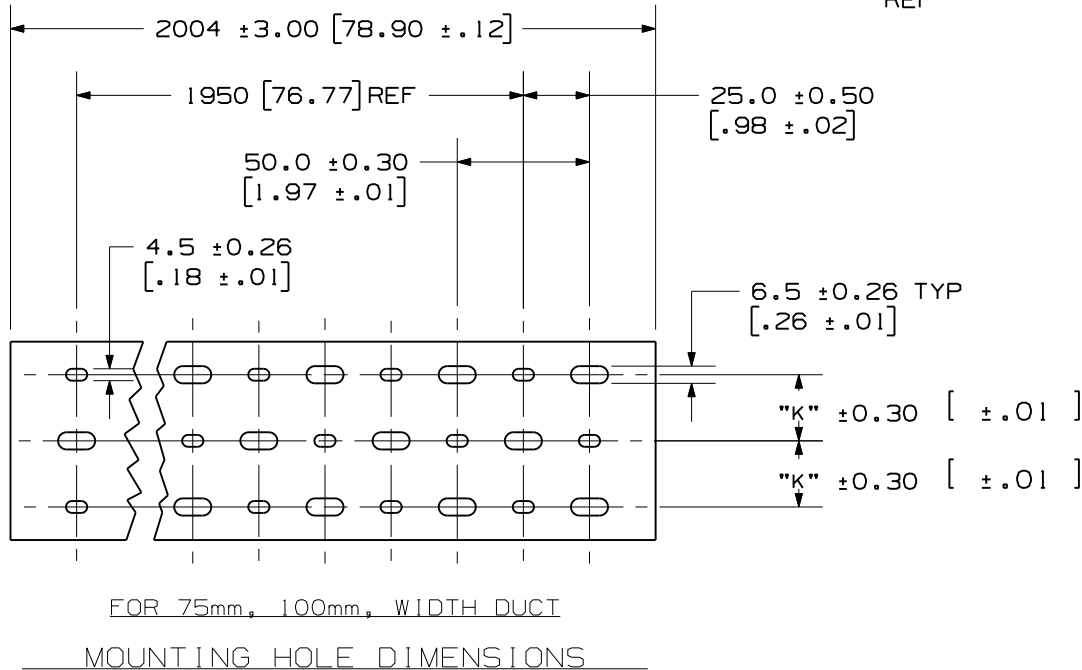
THIS COPY IS PROVIDED ON A RESTRICTED BASIS AND IS NOT TO BE USED IN ANY WAY DETRIMENTAL TO THE INTERESTS OF PANDUIT CORP.



FOR 75mm AND 100mm WALL HEIGHT

SIDE WALL DIMENSIONS

- NOTES:
- "B" MEASURED AT BASE.
 - STANDARD LENGTH: 2.004 METER.
 - SEE CURRENT CATALOG FOR PART NUMBER DESIGNATIONS FOR TYPE, COLOR, AND LENGTH.
 - DUCT TYPE "TNC" PACKAGED WITH TYPE "TNC" COVER.
 - DIMENSIONS ARE METRIC (INCHES).



CHANNEL EXAMPLE:
TNC 37 X 50 LG 2
TYPE WIDE HIGH COLOR (LIGHT GRAY) LENGTH (m)

REV	DATE	BY	CHK	APR	DESCRIPTION	ECN
1	2/1/12	JCST	MRJS	RAMI	A. CORRECTED "T" DIMENSION (SHT 2) (25X37, 25X75, 50X100, 100X75, 100X100)	38539AG-DC
R	11/7/11	JCST	MRJS	RAMI	DRAWING RELEASED TO PRODUCTION	38539AG-DC

TITLE WIRING DUCT AND COVER TYPE "TNC" METRIC					
CUSTOMER DRAWING					
ITEM REVISION					
DATASET FILE NAME D38539AG_DC_TNC/00A					
UNLESS OTHERWISE SPECIFIED, DIMENSIONAL TOLERANCES ARE: mm (IN) .x : 2.54 (.1) .xxx : .127 (.005) .xx : .25 (.01) ANGLES : 5 °					
THIRD ANGLE PROJECTION					
DRAWN BY JCST		DATE 10/24/11		CHK MRJS	
SCALE NONE		DRAWING NUMBER: 38539AG-DC			
SHT 1 OF 3				SIZE A	



MATERIAL:
LOW-SMOKE
HALOGEN-FREE
MODIFIED
PPE-HIPS BLEND

D10100DA/08

2

1

THIS COPY IS PROVIDED ON A RESTRICTED BASIS AND IS NOT TO BE USED IN ANY WAY DETRIMENTAL TO THE INTERESTS OF PANDUIT CORP.



PROFILE DIMENSION				
NOMINAL DUCT SIZE (W X H)	B REF	H REF	T	T TOL.
* 25 X 25	24.6 (.97)	20.5 (.81)	1.4 (.06)	±.26 (.010)
25 X 37	24.6 (.97)	33.0 (1.30)	1.8 (.07)	±.26 (.010)
* 25 X 50	24.6 (.97)	45.5 (1.79)	2.0 (.08)	±.30 (.012)
25 X 75	24.6 (.97)	70.5 (2.78)	2.0 (.08)	±.30 (.012)
37 X 37	37.1 (1.46)	33.0 (1.30)	1.8 (.07)	±.30 (.012)
* 37 X 50	37.1 (1.46)	45.5 (1.79)	2.0 (.08)	±.30 (.012)
37 X 75	37.1 (1.46)	70.5 (2.78)	2.0 (.08)	±.36 (.014)
50 X 50	49.6 (1.95)	45.5 (1.79)	2.0 (.08)	±.30 (.012)
* 50 X 75	49.6 (1.95)	70.5 (2.78)	2.0 (.08)	±.36 (.014)
* 50 X 100	49.6 (1.95)	95.5 (3.76)	2.3 (.09)	±.40 (.016)
75 X 75	74.6 (2.94)	70.5 (2.78)	2.0 (.08)	±.40 (.016)
100 X 50	99.6 (3.92)	45.5 (1.79)	2.0 (.08)	±.40 (.016)
100 X 75	99.6 (3.92)	70.5 (2.78)	2.0 (.08)	±.50 (.020)
* 100 X 100	99.6 (3.92)	95.5 (3.76)	2.3 (.09)	±.50 (.020)

* = NON-STANDARD SIZE

MOUNTING HOLE	
NOMINAL DUCT WIDTH	K ±.5 (.02)
25	----
37	----
50	----
75	25.0 (.98)
100	25.0 (.98)

SLOT DIMENSION		
NOMINAL DUCT HEIGHT	D ±.8 (.03)	R ±.75 (.02)
25	13.6 (.54)	-----
37	24.7 (.97)	-----
50	34.8 (1.37)	-----
75	57.6 (2.27)	26.26 (1.03)
100	81.0 (3.19)	38.0 (1.50)

ALL DIMENSIONS ARE MM (IN).

REV	DATE	BY	CHK	APR	DESCRIPTION	ECN
1	2/1/12	JCST	MRJS	RAMI	SEE SHEET 1 FOR REVISIONS	38539AG-DC
R	11/7/11	JCST	MRJS	RAMI	SEE SHEET 1 FOR REVISIONS	38539AG-DC

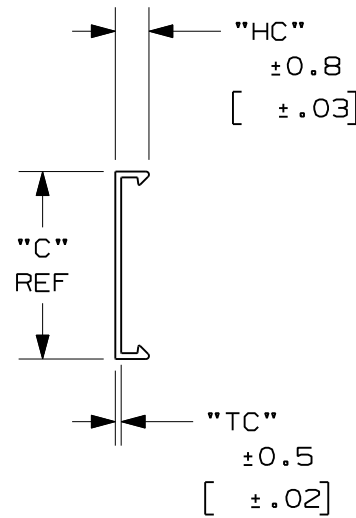
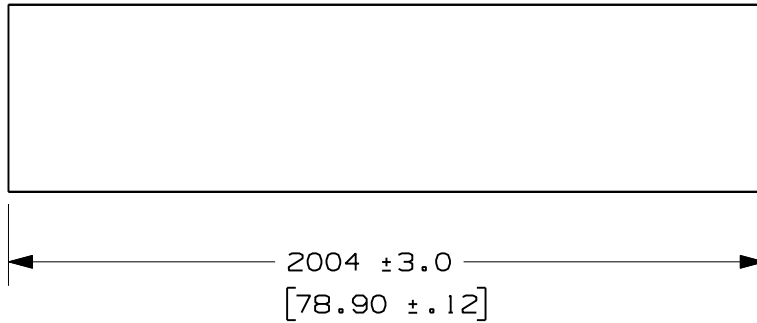
TITLE WIRING DUCT AND COVER TYPE "TNC" METRIC					
CUSTOMER DRAWING					
ITEM REVISION			PANDUIT ™		
DATASET FILE NAME D38539AG_DC_TNC/00A			MATERIAL: LOW-SMOKE HALOGEN-FREE MODIFIED PPE-HIPS BLEND		
UNLESS OTHERWISE SPECIFIED, DIMENSIONAL TOLERANCES ARE: mm (IN) .x : 2.54 (.1) .xxx : .127 (.005) .xx : .25 (.01) ANGLES : 5 °			DRAWING NUMBER: 38539AG-DC		
DRAWN BY JCST		DATE 10/24/11	CHK MRJS	SCALE NONE	SIZE A
THIRD ANGLE PROJECTION			SHT 2 OF 3		

2

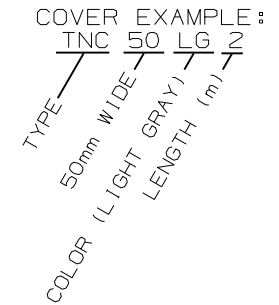
1

D10100DA/08

THIS COPY IS PROVIDED ON A RESTRICTED BASIS AND IS NOT TO BE USED IN ANY WAY DETRIMENTAL TO THE INTERESTS OF PANDUIT CORP.



NOMINAL DUCT SIZE (W)	C REF	HC	TC
25	24.6 (.97)	8.9 (.35)	1.30 (.05)
37	37.1 (1.46)	8.9 (.35)	1.30 (.05)
50	49.6 (1.95)	8.9 (.35)	1.40 (.06)
75	74.6 (2.94)	9.4 (.37)	1.40 (.06)
100	99.6 (3.92)	9.4 (.37)	1.40 (.06)



ALL DIMENSIONS ARE MM (IN).

REV	DATE	BY	CHK	APR	DESCRIPTION	ECN
1	2/1/12	JCST	MRJS	RAMI	SEE SHEET 1 FOR REVISIONS	38539AG-DC
R	11/7/11	JCST	MRJS	RAMI	SEE SHEET 1 FOR REVISIONS	38539AG-DC

<p>TITLE WIRING DUCT AND COVER TYPE "TNC" METRIC CUSTOMER DRAWING</p>					
<p>ITEM REVISION</p>					
<p>DATASET FILE NAME D38539AG_DC_TNC/00A</p>					
<p>UNLESS OTHERWISE SPECIFIED, DIMENSIONAL TOLERANCES ARE: mm (IN) .x : 2.54 (.1) .xxx : .127 (.005) .xx : .25 (.01) ANGLES : 5 °</p>				<p>MATERIAL: LOW-SMOKE HALOGEN-FREE MODIFIED PPE-HIPS BLEND</p>	
<p>THIRD ANGLE PROJECTION</p>				<p>DRAWING NUMBER: 38539AG-DC</p>	
DRAWN BY	DATE	CHK	SCALE	SIZE	
JCST	10/24/11	MRJS	NONE	A	

D10100DA/08

X-ON Electronics

Largest Supplier of Electrical and Electronic Components

Click to view similar products for [Wire Ducting](#) category:

Click to view products by [Panduit](#) manufacturer:

Other Similar products are found below :

[66200A-10](#) [CVED32VEPG](#) [CVED40VEPG](#) [F512D5-5F140Y](#) [F512D5-5F200Y](#) [F512D5-5F26Y](#) [F512D5-5F30Y](#) [F512D5-5F33Y](#) [F512D5-5F34Y](#) [F512D5-5F45Y](#) [F512D5-5F50Y](#) [F512D5-5F54Y](#) [F512D5-5F66Y](#) [F512D5-5F70Y](#) [F512D5-5F75Y](#) [F512D5-5F90Y](#) [F612D5-5F100Y](#) [F612D5-5F130Y](#) [F612D5-5F50Y](#) [F612D5-5F56Y](#) [F612D5-5F58Y](#) [F6L12D5-5F46](#) [F912D5-5F11Y](#) [F912D5-5F170Y](#) [F912D5-5F175Y](#) [F912D5-5F230Y](#) [F912D5-5F300Y](#) [F912D5-5F55Y](#) [F912D5-5F56Y](#) [F912D5-5F63Y](#) [F912D5-5F6Y](#) [F912D5-5F75Y](#) [F912D5-5F85Y](#) [F912D5-5F86Y](#) [F912D5-5F88Y](#) [F912D5-5F96Y](#) [FAP0047WBLMTP](#) [FAP12WBRDRDDLZ](#) [FAP12WDYLYLDLZ](#) [FAP12WEORORDLZ](#) [FAP6WEORORDLZ](#) [FAP6WFDBDBDLZ](#) [FAP8WEORORDLZ](#) [FCE2UWCL](#) [800A-LB](#) [802A-ECSP](#) [802I-ICSP](#) [FJQADH](#) [FJQFXT](#) [PED10](#)