

THIS IS ISSUED IN STRICT CONFIDENCE THAT IT IS NOT USED AS A BASIS FOR MANUFACTURE OR SALE AND THAT IT IS NOT COPIED, REPRINTED OR DISCLOSED TO A THIRD PARTY EITHER WHOLLY OR IN PART WITHOUT THE PRIOR WRITTEN CONSENT OF CAL TEST ELECTRONICS, INC.

REVISIONS			
REV.	DESCRIPTIONS	DATE	APPROVED
—	CLASS A RELEASED	7/11/99	
A	REVISED TO METRIC FORMAT; ADDED NOTES 6 & 7; DIM. 14 (.55)	2/27/18	

- 4mm INSULATED JACK, THRU-HOLE.
- SPECIFICATIONS:  
INSULATORS: POLYAMIDE (NYLON)  
JACK BODY: BRASS, NICKEL PLATED  
NUT: BRASS, NICKEL PLATED
- RATING:  
VOLTAGE:  
IEC 61010-1: 30 VDC/60 VAC  
NON-HANDHELD: 1,200V AC/DC  
CURRENT: 36A MAX.  
TEMPERATURE: -20° C TO +80° C.

4. MOUNTING HOLE: REFERENCE DIAGRAM.

5. MAXIMUM PANEL THICKNESS: 5 mm (.20)

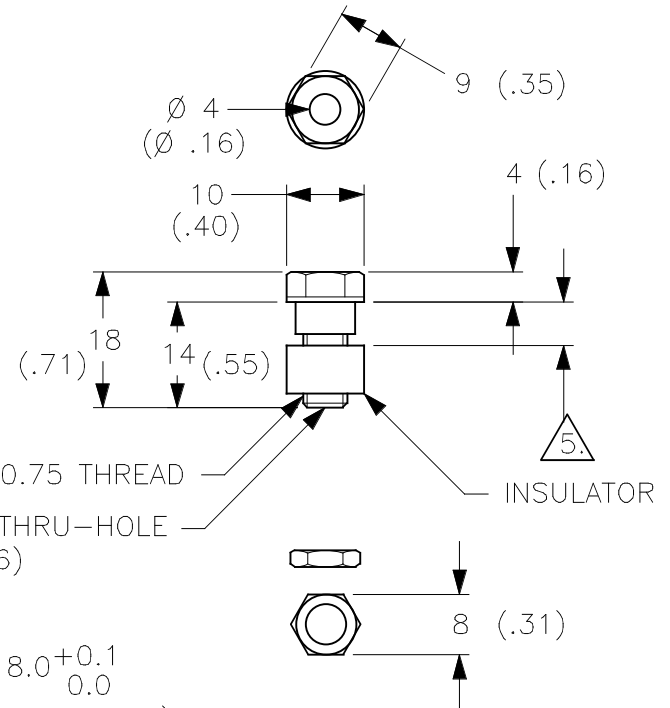
6. SUPPLIED WITH 1 M6x0.75 HEX NUT

7. RoHS 2 COMPLIANT  
EXCEPTION: ANNEX III, 6(c)

### PART NUMBER

**CT2230-#**

COLOR: 0 - BLACK  
2 - RED  
4 - YELLOW  
5 - GREEN  
6 - BLUE  
9 - WHITE



4. MOUNTING HOLE

**METRIC**

UNLESS OTHERWISE SPECIFIED  
DIMENSIONS ARE IN MILLIMETERS  
TOLERANCES ARE:  
DECIMALS ANGLE  
.X ± 0.8 ± 2°  
.XX ± 0.25  
DO NOT SCALE DRAWING

CONTRACT NO.

APPROVALS

DATE

DRAWN WDH

7/11/99

CHECKED

ENGR.

DESIGN ACTIVITY

**Cal Test Electronics**

22820 Savi Ranch Parkway  
Yorba Linda, CA 92887-4610

TITLE

**4 mm INSULATED JACK, THRU-HOLE**

THIRD ANGLE PROJECTION

MATERIAL

FINISH

SIZE  
**A**

CAGE CODE

**43F45**

DWG. NO.

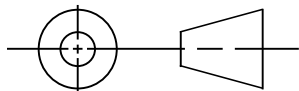
**P223000**

REV.

**A**

SCALE 1:1

SHEET 1 OF 1



## X-ON Electronics

Largest Supplier of Electrical and Electronic Components

*Click to view similar products for [Test Plugs & Test Jacks](#) category:*

*Click to view products by [Cal Test](#) manufacturer:*

Other Similar products are found below :

[01-2601-4-0210](#) [01-2601-4-0212](#) [01-2604-4-0212](#) [01-2350-1-02](#) [01-2368-1-02](#) [01-2606-4-0210](#) [01-2606-5-0212](#) [M39024/11-09G](#)  
[M39024/11-42](#) [M39024/11-43](#) [M39024/12-08](#) [707-5311](#) [707-5402-01-19](#) [707-5410](#) [R948161000](#) [1408-4](#) [1533-1](#) [1659559](#) [1659567](#)  
[1663921](#) [1663939](#) [1696-102](#) [174-R825B-EX](#) [1905509](#) [1905527](#) [1914916](#) [211-101](#) [RS100GBL](#) [RS250GBL](#) [251-102](#) [25-2251-2-03](#) [25-](#)  
[2259-2-03](#) [923743-28-I](#) [2854-BLU](#) [2970-BLK](#) [30-443G](#) [1909861](#) [1916120](#) [1916466](#) [1918007](#) [1919515](#) [1920271](#) [1929125](#) [1933440](#)  
[1938303](#) [1944375](#) [204-103](#) [2079](#) [2435108](#) [2803-102](#)