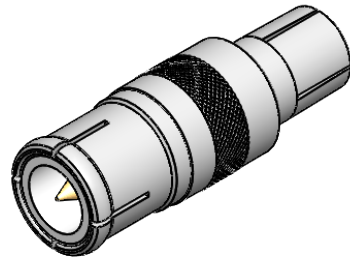
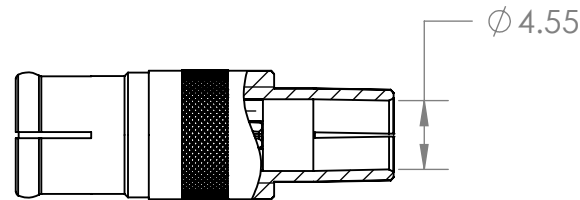
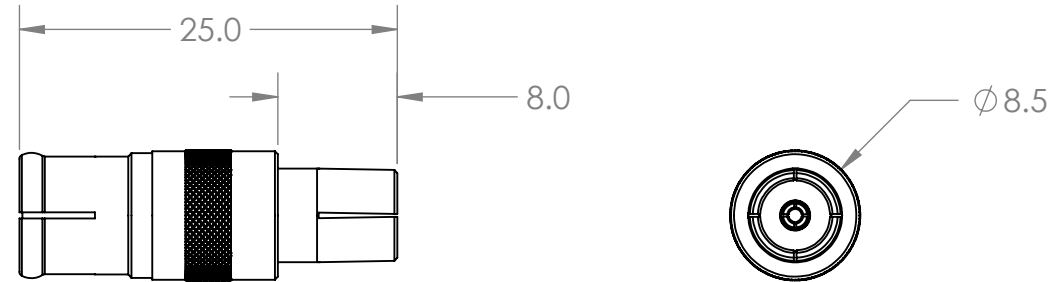


THIS IS ISSUED IN STRICT CONFIDENCE THAT IT IS NOT USED AS A BASIS FOR MANUFACTURE OR SALE AND THAT IT IS NOT COPIED, REPRINTED OR DISCLOSED TO A THIRD PARTY EITHER WHOLLY OR IN PART WITHOUT THE PRIOR WRITTEN CONSENT OF CAL TEST ELECTRONICS, INC.

REVISIONS			
REV.	DESCRIPTION	DATE	APPROVED
A	CLASS A RELEASE	11/1/2021	W.D.H.

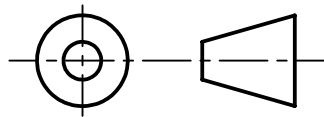
NOTES:

- MATERIAL:  
 BODY - BRASS, NICKEL PLATED  
 CONTACT - BRASS, GOLD PLATED  
 DIELECTRIC - PTFE
- RoHS 2 COMPLIANT



ISOMETRIC VIEW

THIRD ANGLE PROJECTION



UNLESS OTHERWISE SPECIFIED DIMENSIONS ARE IN MILLIMETERS  
 TOLERANCES ARE:  
 X.X = ±0.5 X.X\* = ±0.5\*  
 X.XX = ±0.25  
 X.XXX = ±0.125

DO NOT SCALE DRAWING MATERIAL

SEE NOTES

PROJECT NO.

APPROVALS DATE

DRAWN G.G. 11/01/2021

CHECKER

ENGR. W.D.H. 11/01/2021

DESIGN ACTIVITY

METRIC



22820 Savi Ranch Pkwy.  
 Yorba Linda, CA 92887  
 USA

TITLE  
**BNC ADAPTER, 5mm SCOPE PROBE,  
 NON-TERMINATED**

REFERENCE

TREATMENT

FINISH

SEE NOTES

SIZE CAGE CODE DWG. NO. REV.  
**A 43F45 CT2708 A**

SCALE 2:1 SHEET 1 OF 1

## X-ON Electronics

Largest Supplier of Electrical and Electronic Components

*Click to view similar products for [RF Adapters - In Series](#) category:*

*Click to view products by [Cal Test](#) manufacturer:*

Other Similar products are found below :

[5918-1103-000](#) [651A505](#) [R114703000W](#) [R127871001](#) [R143730700](#) [R222M40050](#) [R223703180](#) [HRM-513S](#) [KC-79-179](#) [KN-99-14](#) [252169-75](#) [252186](#) [R127703001](#) [R127.870.001](#) [R142723000](#) [R161703000](#) [R161715000W](#) [R405005000](#) [BJ38](#) [KA-99-56](#) [KC-59-270](#) [KC-59-284](#) [KC-79-131](#) [KC-99-35](#) [KC-99-40](#) [5919-9503-003](#) [73415-4212](#) [756-18-9](#) [R143.183.000](#) [R164705000](#) [R124720003W](#) [R142723000W](#) [R222M40060](#) [4-1532004-7](#) [755-93-7](#) [033-0219-0001](#) [3094317](#) [5917-9103-000](#) [920-56](#) [R222705239](#) [R143753000W](#) [R143720000](#) [R223703080W](#) [9176-9113-000](#) [R222M40107](#) [R114009000](#) [R124720003](#) [AD48](#) [ADP-NF-NF](#) [R142562290](#)