

THIS IS ISSUED IN STRICT CONFIDENCE THAT IT IS NOT USED AS A BASIS FOR MANUFACTURE OR SALE AND THAT IT IS NOT COPIED, REPRINTED OR DISCLOSED TO A THIRD PARTY EITHER WHOLLY OR IN PART WITHOUT THE PRIOR WRITTEN CONSENT OF CAL TEST ELECTRONICS, INC.

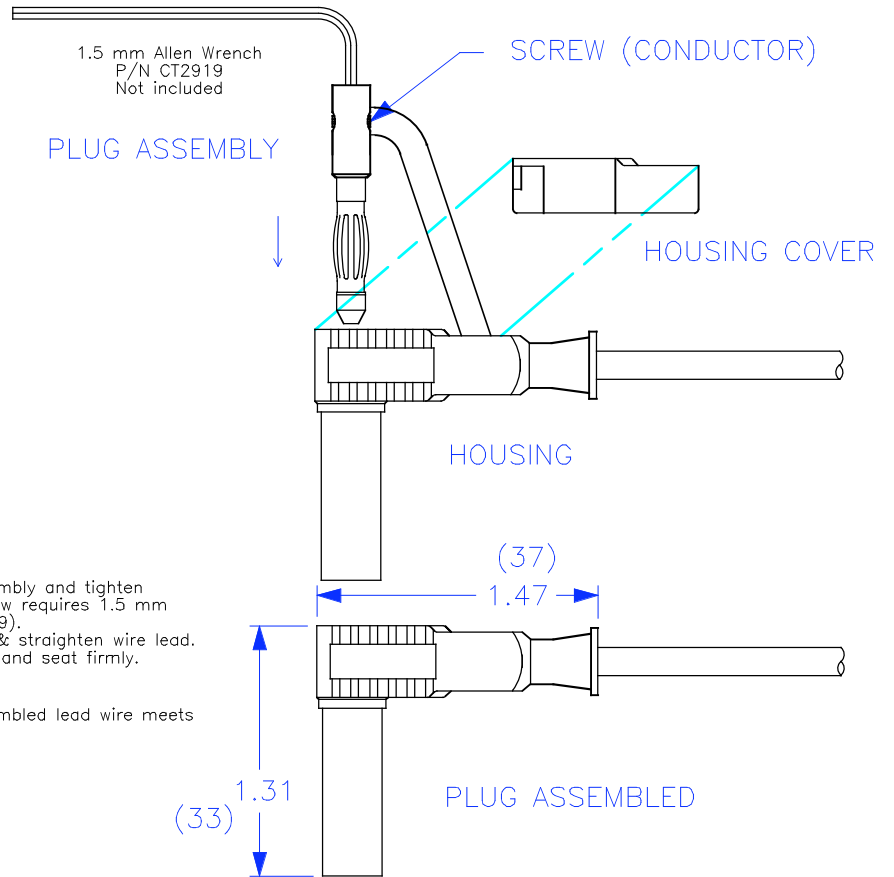
REVISIONS			
REV.	DESCRIPTIONS	DATE	APPROVED
—	CLASS A RELEASED	11/12/07	

- DO-IT-YOURSELF (DIY) Ø4mm RIGHT-ANGLE SHEATH BANANA PLUG, SCREW ATTACHMENT
- SPECIFICATIONS:
 INSULATOR BODY: POLYPROPYLENE
 PLUG BODY: BRASS, NICKEL PLATED
 CONTACT SPRING: BECU, NICKEL PLATED
- RATING:
 VOLTAGE: 1000 V CATIII P2 (* Instructions)
 REINFORCED INSULATION, CE MARK
 CURRENT: 20 A MAX.
 INTERNAL RESISTANCE: <10 mΩ
 TEMPERATURE: -20° TO +80° C.
- MAXIMUM WIRE SIZES:
 CONDUCTOR: Ø .090 (12AWG)
 INSULATION: Ø .16 (Ø 4.0)
 STRIP LENGTH: .20 (5)

Assembly Instructions:

- Slide wire through Housing.
- Strip wire .20" (5 mm).
- Insert stripped wire into Plug Assembly and tighten Set-Screw (conductor). Set-Screw requires 1.5 mm Allen Wrench (Cal Test P/N CT2919).
- Push Plug Assembly into Housing & straighten wire lead.
- Push Housing Cover onto Housing and seat firmly.
- Plug is assembled.

* IEC specification is met only if assembled lead wire meets requirement and voltage rating.



PART NUMBER

CT3203-#

- COLOR:
- 0 - BLACK
 - 2 - RED
 - 4 - YELLOW
 - 5 - GREEN
 - 6 - BLUE
 - 9 - WHITE

THIRD ANGLE PROJECTION		UNLESS OTHERWISE SPECIFIED DIMENSIONS ARE IN INCHES TOLERANCES ARE: FRACTIONS DECIMALS ± 1/32 .XX ± .02 DO NOT SCALE DRAWING .XXX ± .005	CONTRACT NO.		Cal Test Electronics 22820 Savi Ranch Parkway Yorba Linda, CA 92887-4610			
			APPROVALS	DATE	TITLE			
MATERIAL		DRAWN	WDH	11/12/07	DIY 4mm RIGHT-ANGLE SHEATH PLUG, SCREW ATTACHMENT			
FINISH		CHECKED			SIZE	CAGE CODE	DWG. NO.	REV.
NEXT ASSY	USED ON	ENGR.			A	43F45	P320300	—
APPLICATION		DESIGN ACTIVITY			SCALE	1:1	SHEET	1 OF 1

X-ON Electronics

Largest Supplier of Electrical and Electronic Components

Click to view similar products for [Test Plugs & Test Jacks](#) category:

Click to view products by [Cal Test](#) manufacturer:

Other Similar products are found below :

[01-2601-4-0210](#) [01-2601-4-0212](#) [01-2604-4-0212](#) [01-2604-5-0210](#) [01-2150-1-0312](#) [01-2350-1-02](#) [01-2352-1-02](#) [01-2368-1-02](#) [01-2604-4-0210](#) [01-2604-5-0212](#) [01-2606-4-0210](#) [01-2606-4-0212](#) [01-2606-5-0212](#) [M39024/10-01G](#) [M39024/10-17G](#) [M39024/11-09G](#) [M39024/11-42](#) [M39024/11-43](#) [M39024/12-08](#) [707-5311](#) [707-5402-01-19](#) [707-5410](#) [923739-40-I](#) [R644543000](#) [R948161000](#) [R999351000](#) [1408-4](#) [1499-101](#) [1533-1](#) [1659559](#) [1659567](#) [1663921](#) [1663939](#) [1696-102](#) [174-R825B-EX](#) [NYS508-BU](#) [NYS508-O](#) [211-101](#) [RS100GBL](#) [RS250GBL](#) [251-102](#) [25-2251-2-03](#) [25-2259-2-03](#) [923743-16-I](#) [923743-24-I](#) [923743-28-I](#) [2854-BLU](#) [2970-BLK](#) [30-443G](#) [1680](#)