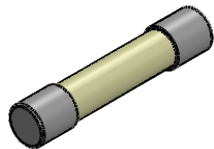


THIS IS ISSUED IN STRICT CONFIDENCE THAT IT IS NOT USED AS A BASIS FOR MANUFACTURE OR SALE AND THAT IT IS NOT COPIED, REPRINTED OR DISCLOSED TO A THIRD PARTY EITHER WHOLLY OR IN PART WITHOUT THE PRIOR WRITTEN CONSENT OF CAL TEST ELECTRONICS, INC.

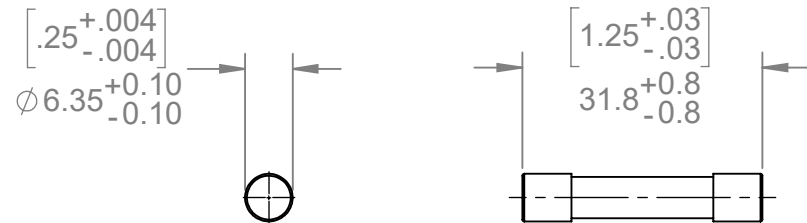
NOTES:

- MATERIAL:**  
TUBE BODY: CERAMIC (NON-TRANSPARENT)  
CAP: BRASS, NICKEL PLATED  
ELEMENT: METAL WIRE  
FILLER: QUARTZ SAND
- SPECIFICATIONS:**  
RATED VOLTAGE: 1,000 V AC / DC  
RATED CURRENT: SEE PART NUMBER TABLE  
FUSING TIME LIMIT:  
4 In: 60 ms MAX.  
10 In: 6 ms MAX.  
BREAKING CAPACITY: 50 KA MIN.  
OPERATING TEMPERATURE: -55°C TO +125°C
- UL AND / OR TUV RECOGNIZED
- RoHS 2 COMPLIANT; EXEMPTION ANNIX III 6(c)
- WEIGHT:**  
INDIVIDUAL: 1.2 g/pc



ISOMETRIC VIEW

REVISIONS			
REV.	DESCRIPTION	DATE	APPROVED
-	CLASS A RELEASED	3/14/18	
A	REVISED NOTE 2. BREAKING CAPACITY WAS 10 KA MIN. CONVERTED TO SW FORMAT	1/17/2019	
B	ADDED 2.0 A FUSE TO MODEL NUMBER TABLE	7/18/2019	



CT4049-2.0A	2.0 A	-
CT4049-1.5A	1.5 A	-
CT4049-1.0A	1.0 A	-
CT4049-0.5A	0.5 A	-
MODEL NUMBER	CURRENT RATING	NOTES / REFERENCE
MODEL NUMBER TABLE		

**METRIC**

UNLESS OTHERWISE SPECIFIED DIMENSIONS ARE IN MILLIMETERS TOLERANCES ARE:  
PER DIN ISO 2768m

PROJECT NO.  
**C306**

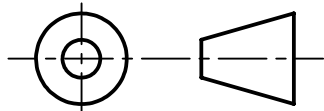
**Cal Test Electronics** 22820 Savi Ranch Parkway  
Yorba Linda, CA 92887

THIRD ANGLE PROJECTION

DO NOT SCALE DRAWING

APPROVALS	DATE
DRAWN WDH	3/14/2018
CHECKER B.Hansen	3/14/2018

TITLE  
**FUSE, MINATURE, CERAMIC, 6X32,  
1000 V, VERY FAST-ACTING**



TREATMENT  
NONE

ENGR.

FINISH  
NONE

DESIGN ACTIVITY

SIZE <b>A</b>	CAGE CODE <b>43F45</b>	DWG. NO. <b>P404900</b>	REV. <b>B</b>
SCALE 1:1	SHEET 1 OF 1		

## X-ON Electronics

Largest Supplier of Electrical and Electronic Components

*Click to view similar products for [Cartridge Fuses](#) category:*

*Click to view products by [Cal Test](#) manufacturer:*

Other Similar products are found below :

[5ST250MA-R](#) [5TT3A-R](#) [5TT8A-R](#) [MBO-20](#) [MDM-4/10](#) [MDQ-V-15/100](#) [MDX-1-6/10](#) [MDX-2](#) [MDX-3-2/10](#) [MDX-6-1/4](#) [FLSR-15](#)  
[FLSR-30](#) [FRS-1-1/4](#) [FRS-1-6/10](#) [FRS-4/10](#) [H362003](#) [ABC-2](#) [1/2A](#) [12C10X38GI](#) [AGC-15EX](#) [AGC-V-3-12-R](#) [AGY-50](#) [15019-G](#) [MSL-1-](#)  
[1/2](#) [MSL-1-1/4](#) [MSL-1/2](#) [MSL-1/4](#) [MSL-3](#) [MSL-3/4](#) [MSL-4](#) [MSL-5](#) [BK1/C436-2A](#) [BK1-GMA-1-6-R](#) [BK1-S501-3-15-R](#) [BK1-S505-1-R](#)  
[BK1-S506-3-15-R](#) [BK/C515S-250-R](#) [S501-V-10A](#) [301030](#) [303030](#) [FLA10](#) [FLA-4/10](#) [FLNR-5](#) [20.0M6.3X32F](#) [301001](#) [301020](#) [311008](#)  
[31301.5H-XP](#) [313.25](#) [313.75](#)