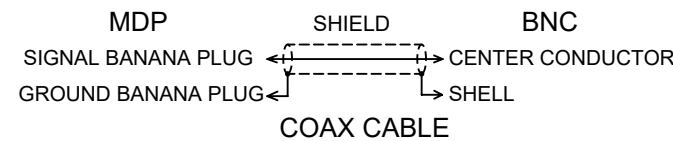
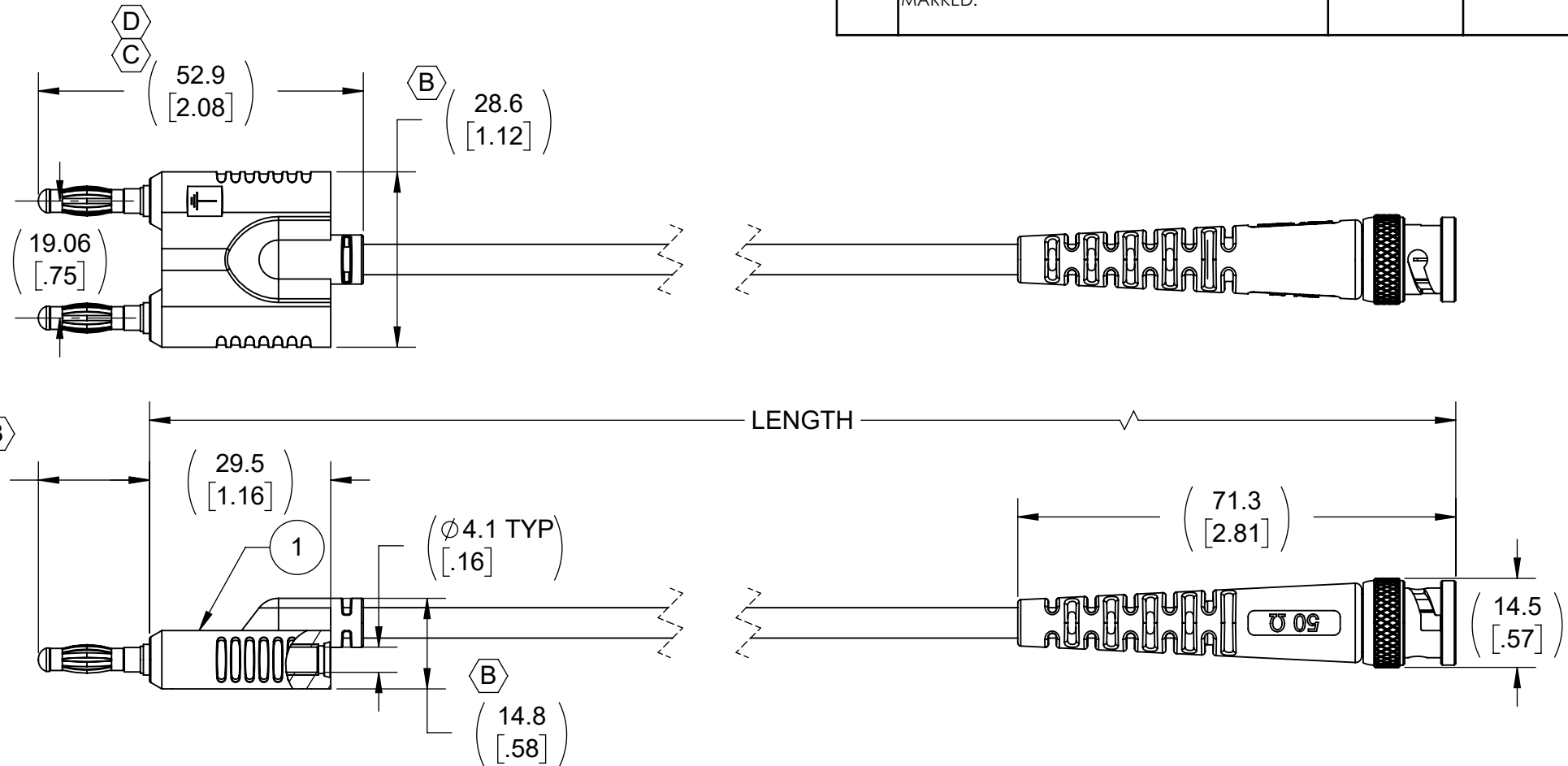


THIS IS ISSUED IN STRICT CONFIDENCE THAT IT IS NOT USED AS A BASIS FOR MANUFACTURE OR SALE AND THAT IT IS NOT COPIED, REPRINTED OR DISCLOSED TO A THIRD PARTY EITHER WHOLLY OR IN PART WITHOUT THE PRIOR WRITTEN CONSENT OF CAL TEST ELECTRONICS, INC.

| REVISIONS |  |           |           |
|-----------|--|-----------|-----------|
| REV.      | DESCRIPTION  | DATE      | APPROVED  |
| A         | INITIAL RELEASE  | 6/2/2021  |           |
| B         | ITEM 1 UPDATED TO V4.3.  | 6/23/2021 |           |
| C         | DRAWING UPDATED TO NEW B SIZE FORMAT; DWG. NO. WAS P445000; MDP BODY UPDATED TO V4.3.1   | 11/3/2021 | B. HANSEN |
| D         | DIM 52.9 WAS 52.6; NOTE 1, ADDED 22 AWG (19X34); DELETED Ø3.5; NOTE 3, VOLTAGE WAS 300 VRMS; ADDED CURRENT; NOTE 5, ADDED CE MARKED. | 6/8/2022  | B. Hansen |

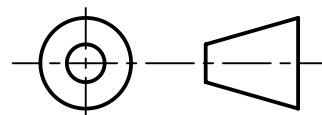
**NOTES:**

- ALL SPECIFICATIONS SUBJECT TO CHANGE WITHOUT NOTICE
- MATERIAL:**
  - MDP CONNECTOR -
    - MOLDED BODY: POLYPROPYLENE (PP), BLACK.
    - 4mm BANANA PLUGS -
      - BODY: BRASS, NICKEL PLT.
      - CAGE CONTACT: BECU, NICKEL PLT.
  - RG58C/U COAX CABLE -
    - JACKET: PVC, BLACK; Ø4.95 O.D.
    - DIELECTRIC: PE
    - CENTER CONDUCTOR: 22 AWG (19X34) TINNED COPPER, STRANDED.
  - BNC MALE CONNECTOR -
    - BODY & COULPING NUT: BRASS, NICKEL PLT.
    - DIELECTRIC: PTFE
    - CENTER CONTACT: BRASS, GOLD PLT.
    - MOLDED BOOT: PVC, BLACK
- ELECTRICAL:**
  - IMPEDANCE:
    - ASSEMBLY: NON-CONSTANT
    - BNC & RG58C/U: 50Ω
  - VOLTAGE -
    - 30 VRMS / 60 VDC (HANDHELD)
    - 500 VRMS (HANDS FREE)
    - DO NOT USE ON CIRCUITS SUBJECT TO TRANSIENT OVERVOLTAGES.
    - CURRENT: 3 A MAX.
- MECHANICAL:**
  - OPERATING TEMPERATURE: 0°C TO +50°C
  - CABLE BEND RADIUS:
    - REPEATED MIN. - 49.8 mm
    - ONE-TIME MIN. - 25 mm
- CE MARKED**
  - ROHS 2 COMPLIANT.



**SCHMATIC**

THIRD ANGLE PROJECTION



|              |                         |                             |
|--------------|-------------------------|-----------------------------|
| CT4450-100   | 100 ±1.5                | -100                        |
| MODEL NUMBER | LENGTH & TOLERANCE (cm) | MODEL NUMBER -XXX EXTENSION |

MODEL NUMBER TABLE

|   |                                |          |  |
|---|--------------------------------|----------|--|
| UNLESS OTHERWISE SPECIFIED DIMENSIONS ARE IN MILLIMETERS TOLERANCES ARE:<br>X.X = ±0.5 X.X* = ±0.5*<br>X.XX = ±0.25<br>X.XXX = ±0.125<br>DO NOT SCALE DRAWING | PROJECT NO.<br><b>A660(a)</b>  |          | 22820 Savi Ranch Prky.<br>Yorba Linda, CA 92887<br>USA |
|   | APPROVALS                      | DATE     |  |
| MATERIAL<br>SEE NOTES   | DRAWN<br>WDH                   | 6/2/2021 | <b>CABLE ASSEMBLY, MDP TO BNC MALE, RG58C/U</b>        |
| TREATMENT<br>N/A  | CHECKER                        |          |  |
| FINISH<br>N/A   | ENGR.<br>B. HANSEN             | 6/3/2021 | SIZE<br><b>B</b>                                       |
|   | DESIGN ACTIVITY<br>ENGINEERING | 6/2/2021 | CAGE CODE<br><b>43F45</b>                              |
|   |                                |          | DWG. NO.<br><b>CT4450</b>                              |
|   |                                |          | REV.<br><b>D</b>                                       |
|   |                                |          | SCALE<br>1:1   |
|   |                                |          | SHEET<br>1 OF 1  |

| ITEM NO. | DESCRIPTION   | QTY. |
|----------|---|------|
| 2        | BNC MALE, FLEX BEND BOOT, RG58C                       | 1    |
| 1        | MOLDED ASSEMBLY, 4mm DOUBLE PLUG (MDP), RG58C/U CABLE | 1    |

## X-ON Electronics

Largest Supplier of Electrical and Electronic Components

*Click to view similar products for [Audio Cables](#) / [Video Cables](#) / [RCA Cables](#) category:*

*Click to view products by [Cal Test](#) manufacturer:*

Other Similar products are found below :

[DB25M10DB25MY](#) [1-3737-600-3216](#) [LF3BLX](#) [30-513](#) [28-511-0](#) [RCA05RCAB](#) [426058900-3](#) [427493000-3](#) [49152A-010-S2](#) [32-3766](#)  
[32HR07284X](#) [CAB-LFH-V16A16S0](#) [DB25M02XLRMXLRFY](#) [LF1BKX](#) [DVI-I-VGA/DVI-D-CBL-MATRIX](#) [VMP2YX](#) [TT746](#) [CN13B](#)  
[MDC8P53](#) [LF10GNX](#) [427492100-3](#) [LF4BLX](#) [426491500-3](#) [cab-DP to HDMI Passive](#) [VGA CABLE](#) [DISPLAYPORT TO VGA CABLE](#)  
[TT3GNX](#) [1700021831-01](#) [Audio Cable](#) [427491690-3](#) [427528000-3](#) [TT2PX](#) [SPEAKER CABLE L=300mm](#) [1700000898](#) [Speaker cable](#)  
[594E3412000E](#) [32007-005500-200-RS](#) [BAPHG](#) [VAB-S04-L](#) [104600030](#) [104600601](#) [104911001](#) [35HR03635X](#) [110028919](#) [11.04.5505](#)  
[11.04.5522](#) [11.04.5736](#) [11.04.5740](#) [11.04.5780](#) [11.04.5782](#)