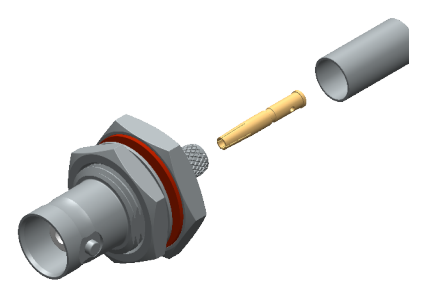
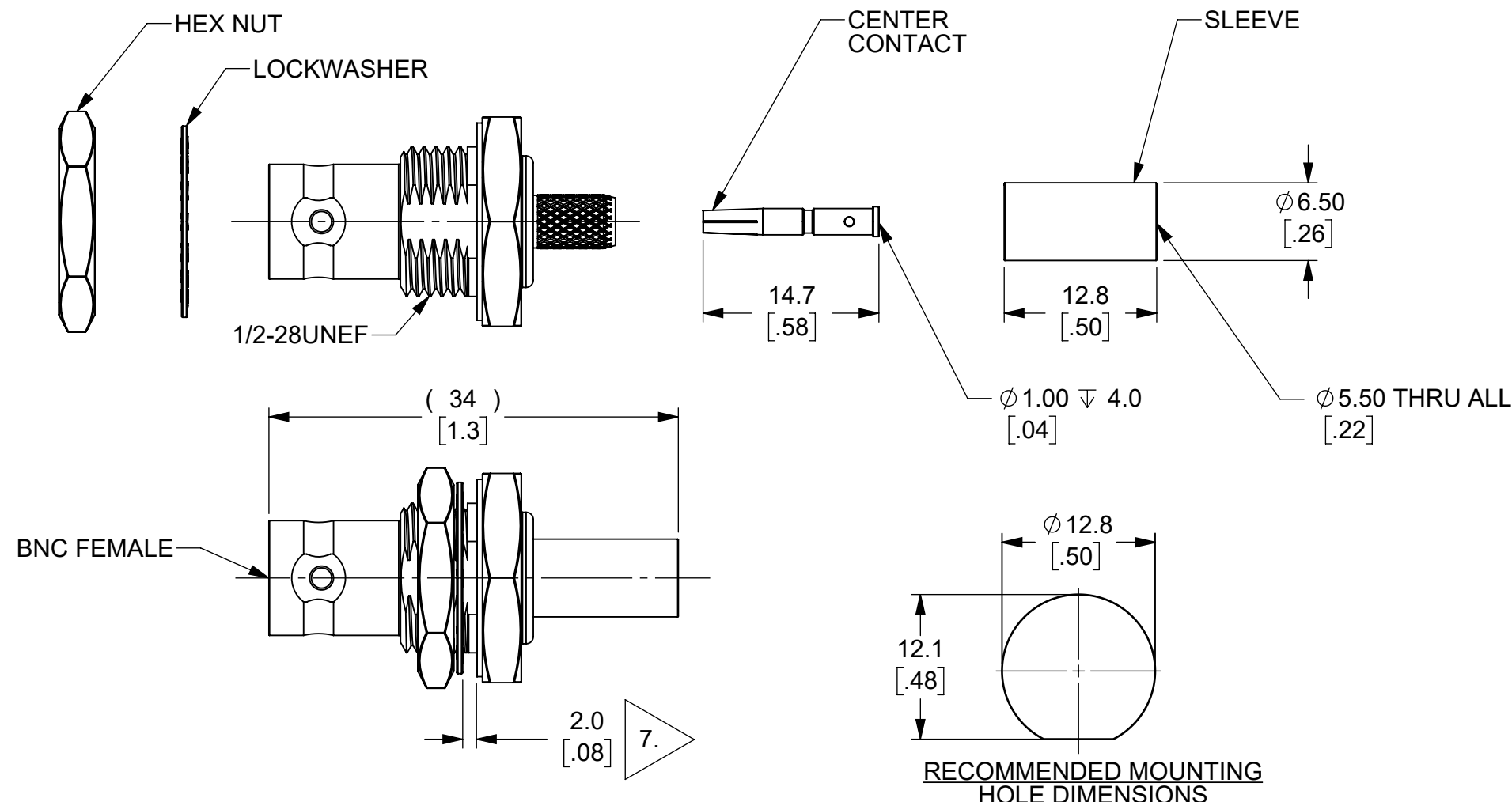


THIS IS ISSUED IN STRICT CONFIDENCE THAT IT IS NOT USED AS A BASIS FOR MANUFACTURE OR SALE AND THAT IT IS NOT COPIED, REPRINTED OR DISCLOSED TO A THIRD PARTY EITHER WHOLLY OR IN PART WITHOUT THE PRIOR WRITTEN CONSENT OF CAL TEST ELECTRONICS, INC.

REVISIONS			
REV.	DESCRIPTION	DATE	APPROVED
A	INITIAL RELEASE	11/15/2023	B. Hansen

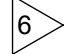
- NOTES:
- ALL SPECIFICATIONS SUBJECT TO CHANGE WITHOUT NOTICE.
 - ADAPTER TO MEET OR EXCEED ALL SPECIFICATIONS PER MIL-PRF-39012.
 - FREQUENCY RANGE SPECIFICATIONS ARE FOR REFERENCE AND ARE DEPENDENT ON CABLE TYPE AND OTHER APPLICATION SPECIFIC CONDITIONS.
 - MATERIAL:
 - BODY: BRASS, NICKEL PLATED
 - CENTER CONTACT: BRASS, GOLD PLATED
 - HEX NUT: BRASS, NICKEL PLATED
 - LOCKWASHER: BRASS, NICKEL PLATED
 - DIELECTRIC: DELRIN
 - ELECTRICAL:
 - IMPEDANCE: 50Ω
 - FREQUENCY: DC - 2 GHz
 - WORKING VOLTAGE: 500 Vrms
 - CABLE TYPE:
 - THE CT4511 IS INTENDED TO BE USED WITH THE FOLLOWING TYPES OF CABLE:
 - RG-58
 - MAXIMUM PANEL THICKNESS: 2.0 mm
 - ASSEMBLY INSTRUCTIONS ON SHEET 2 OF 2.
 - MECHANICAL:
 - TEMPERATURE RANGE: -20°C TO +80°C
 - RoHS AND REACH COMPLIANT

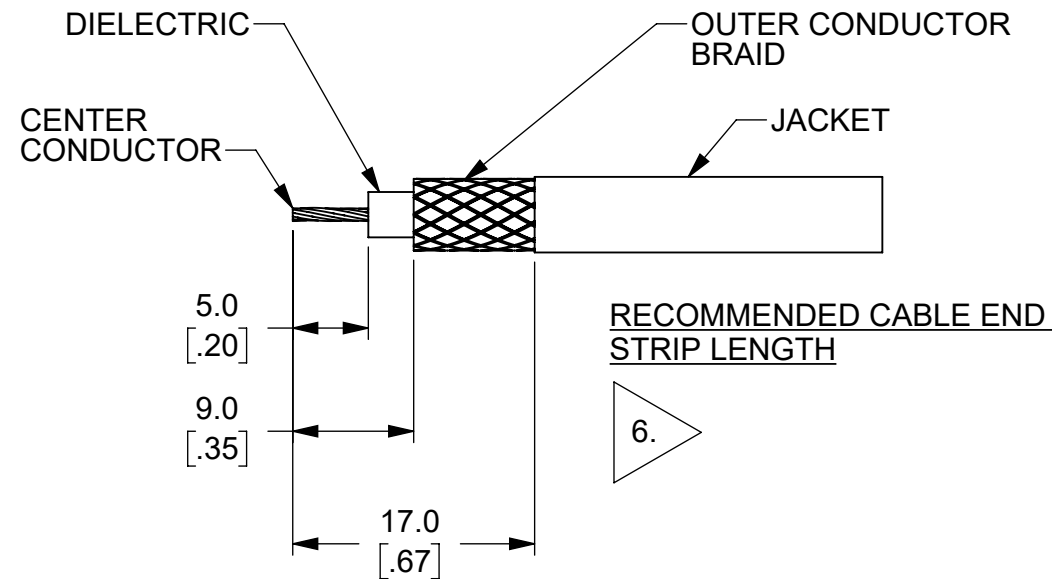
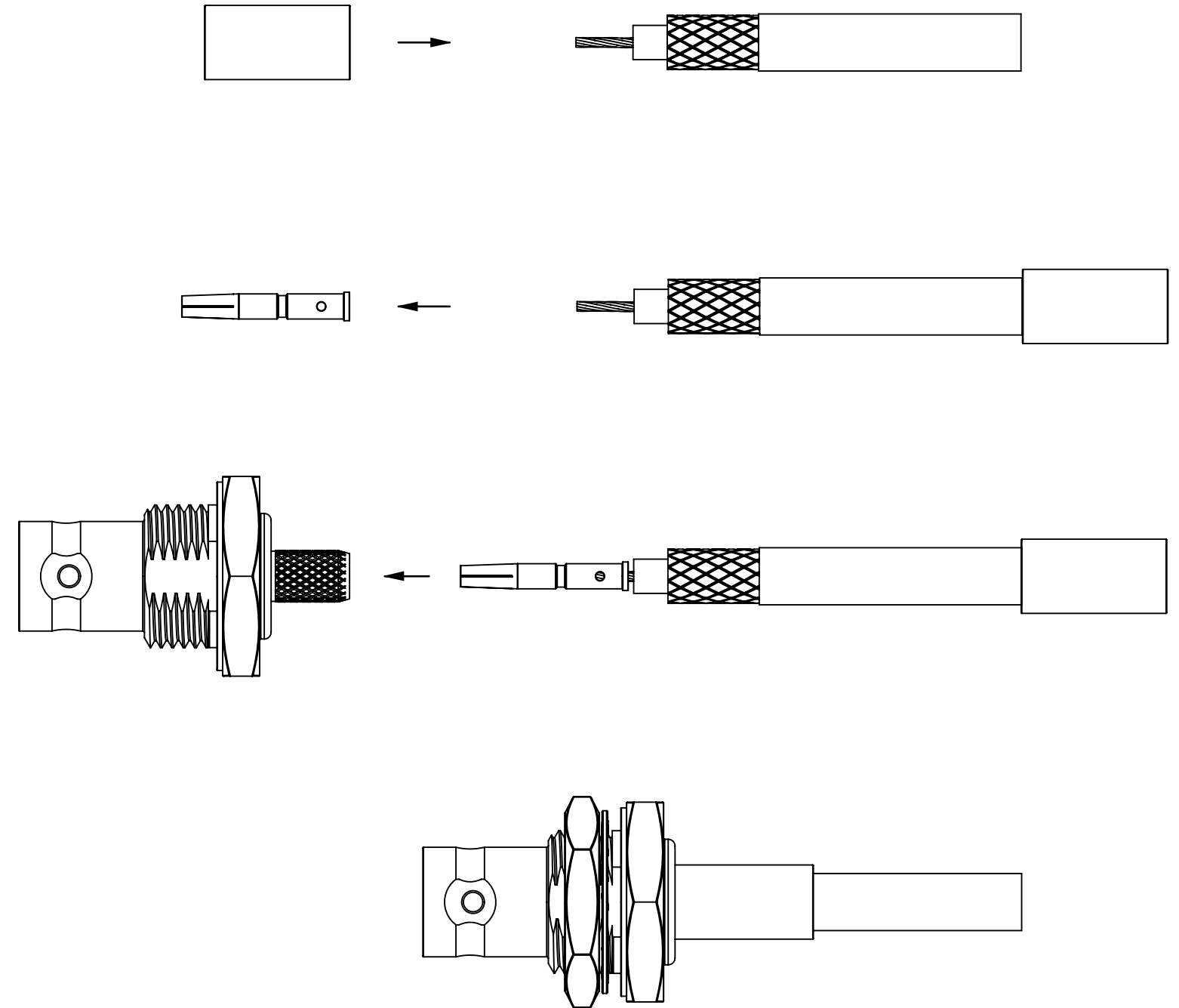


ISOMETRIC VIEW
FULL SCALE

CT4511		BULKHEAD MOUNT, CRIMP		IN-SERIES CONNECTOR	
MODEL NUMBER		CONFIGURATION		NOTES / REFERENCE	
MODEL NUMBER TABLE					
THIRD ANGLE PROJECTION	UNLESS OTHERWISE SPECIFIED DIMENSIONS ARE IN MILLIMETERS TOLERANCES ARE: X.X = ±0.5 X.X* = ±0.5* X.XX = ±0.25 X.XXX = ±0.125 DO NOT SCALE DRAWING	PROJECT NO.		22820 Savi Ranch Prky. Yorba Linda, CA 92887 USA	
		APPROVALS	DATE	TITLE	
REFERENCE	MATERIAL SEE NOTES	DRAWN GSG	11/13/2023	CONNECTOR, BNC FEMALE, BULKHEAD MOUNT DIY	
	TREATMENT NONE	CHECKER B. HANSEN	11/13/2023		
	FINISH SEE NOTES	ENGR. B. HANSEN	11/2/2023	SIZE B	CAGE CODE 43F45
		DESIGN ACTIVITY		DWG. NO. CT4511	REV. A
				SCALE 2:1	SHEET 1 OF 2

THIS IS ISSUED IN STRICT CONFIDENCE
 THAT IT IS NOT USED AS A BASIS FOR
 MANUFACTURE OR SALE AND THAT IT IS
 NOT COPIED, REPRINTED OR
 DISCLOSED TO A THIRD PARTY EITHER
 WHOLLY OR IN PART WITHOUT THE
 PRIOR WRITTEN CONSENT OF CAL TEST
 ELECTRONICS, INC.

- D** ASSEMBLY INSTRUCTIONS:
1. SLIDE CRIMP SLEEVE ONTO CABLE JACKET
 2. STRIP COAXIAL CABLE END 
 3. INSERT CENTER CONDUCTOR INTO CONTACT HOLE DIAMETER
 4. SOLDER CONTACT TO CENTER CONDUCTOR FOR BETTER PERFORMANCE
 5. FLARE THE OUTER CONDUCTOR BRAID
 6. INSERT CONTACT PIN FIRMLY INTO THE BNC CONNECTOR UNTIL IT SNAPS INTO POSITION
 7. ENSURE THE OUTER CONDUCTOR BRAID SEATS PROPERLY AND UNIFORMLY AROUND THE OUTER SURFACE OF THE BNC CRIMP POST
 8. SLIDE SLEEVE OVER BRAID AND POST
 9. CRIMP SLEEVE TO THE BNC CRIMP POST USING THE APPROPRIATE CRIMPING TOOL



METRIC	APPROVALS	DATE	SIZE	CAGE CODE	DWG. NO.	REV.
	DRAWN GSG	11/13/2023	B	43F45	CT4511	A
	CHECKER B. HANSEN	11/13/2023	SCALE 2:1	SHEET 2 OF 2		

X-ON Electronics

Largest Supplier of Electrical and Electronic Components

Click to view similar products for [RF Connectors / Coaxial Connectors](#) category:

Click to view products by [Cal Test](#) manufacturer:

Other Similar products are found below :

[89674-0827](#) [6059674-1](#) [630059-000](#) [6501-1071-002](#) [6769](#) [7002-1541-010](#) [7002-1572-002](#) [7004-1512-000](#) [7009-1511-004](#) [7101-1541-010](#)
[7101-1571-002](#) [7105-1521-002](#) [7203-1571-003](#) [7209-1511-011](#) [7210-1511-040](#) [7242-1511-000](#) [7405-1521-005](#) [7405-1521-802](#)
[804S01D04M040](#) [8527](#) [8547](#) [FS11V](#) [877931](#) [8808-1511-001](#) [9049-9513-000](#) [9074-9513-000](#) [PL11C-026](#) [PL40-36](#) [9408-1113-000](#) [980-](#)
[8666-005](#) [11 SMA-50-2-6 / 111 NE](#) [11 SMA-50-3-6 / 111 NE](#) [1-201144-1](#) [120919](#) [R107003010W](#) [R112186000](#) [R113053000W](#) [R113082097](#)
[R113236000](#) [R114083000](#) [R114670000W](#) [R123415000W](#) [R124076320](#) [R124076450](#) [R124175123](#) [R125075000W](#) [R125075001](#)
[R125172000W](#) [R125415030](#) [R141007161](#)