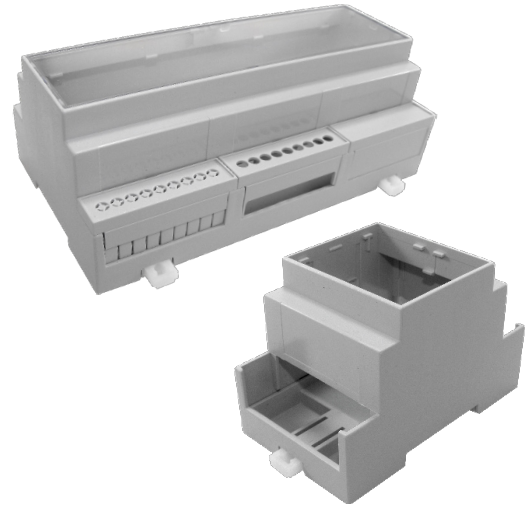


DIN RAIL BOXES

DIN Rail Standard Height Module Boxes

- Snap fit modular design for ease of assembly and custom kitting
- Base fits 35mm DIN rail or directly to flat surface
- Moulded in light grey UL94-V0 flame retardant polycarbonate
- Carries up to 3 PCBs horizontally or 2 vertically
- Snap fit terminal cover options for IP20 finger protection
- Snap in covers available in grey, clear, transparent red and smoked
- Standard enclosure consists of base, top and rail/wall clips
- Open top as standard, solid top, vented and extended wall options available
- Covers and terminal guards ordered separately and can be supplied in kits
- Easily customised covers and terminal guards
- Enclosed base offers isolation from DIN rail
- Front panel ideal for screen printing and recessed solid top for labels and membranes
- Other colours and EMC shielding available to order
- Screws to mount base

CNMB



| | BOX LENGTH | HORIZONTAL PCB SIZES | | | VERTICAL PCB SIZES | | PCB FIXING BOSS | |
|----------|------------|----------------------|------------|-----------|--------------------|-----------|-----------------|--------|
| | | A | B | C | D | E | X | Y |
| CNMB/1- | 17.5mm | 86.5x14mm | 57x14mm | 41.8x14mm | 34x59.6mm | 40x14.8mm | 6.2mm | 18.3mm |
| CNMB/2- | 36mm | 86.5x33mm | 57x32mm | 42x32mm | 34x59.6mm | 40x33mm | 6.2mm | 18.3mm |
| CNMB/3- | 53mm | 86.5x50mm | 57x49mm | 42x49mm | 34x59.6mm | 40x50mm | 8.8mm | 18.3mm |
| CNMB/4- | 71mm | 86.5x68mm | 57x67mm | 42x67mm | 34x59.6mm | 40x68mm | 8.8mm | 18.3mm |
| CNMB/5- | 88mm | 86.5x84mm | 57x83mm | 42x83mm | 34x59.6mm | 40x84mm | 8.8mm | 18.3mm |
| CNMB/6- | 106mm | 86.5x103mm | 57x102mm | 42x102mm | 34x59.6mm | 40x103mm | 8.9mm | 18.3mm |
| CNMB/9- | 159mm | 86.5x156mm | 57x155.5mm | 42x155mm | 34x59.6mm | 40x155mm | 8.9mm | 18.3mm |
| CNMB/12- | 212mm | 86.5x208mm | 57x207mm | 42x207mm | 34x59.6mm | 40x208mm | 8.9mm | 18.3mm |

For double row terminals covers both sides, add /2 to type No. (e.g. CNMB/3/2)

For single row terminals cover one side only, add /1 to type No. (e.g. CNMB/3/1)

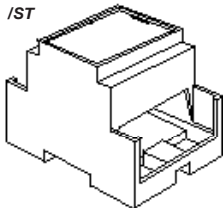
Box supplied with open top as standard

For solid recessed top used for membrane keypads or clear covers to enclose labels, add /ST to type No. (e.g. CNMB/3ST/2)

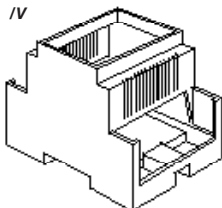
For cooling vents both sides add /V to type No. (e.g. CNMB/3/V/2)

For extended side walls which meet the lower PCB behind terminals, add /W to type No. (e.g. CNMB/3W/2)

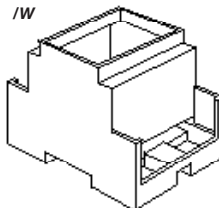
Solid Top /ST



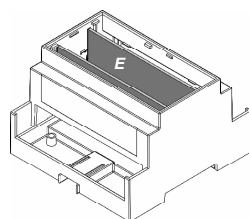
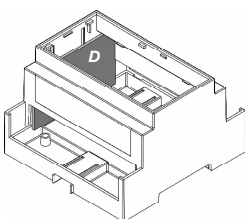
Vented Sides /V



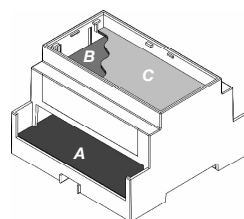
Extended Walls /W



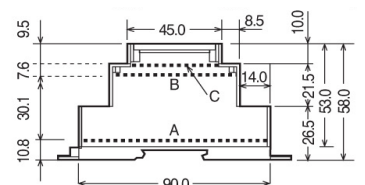
Vertical PCB Positions



Horizontal PCB Positions

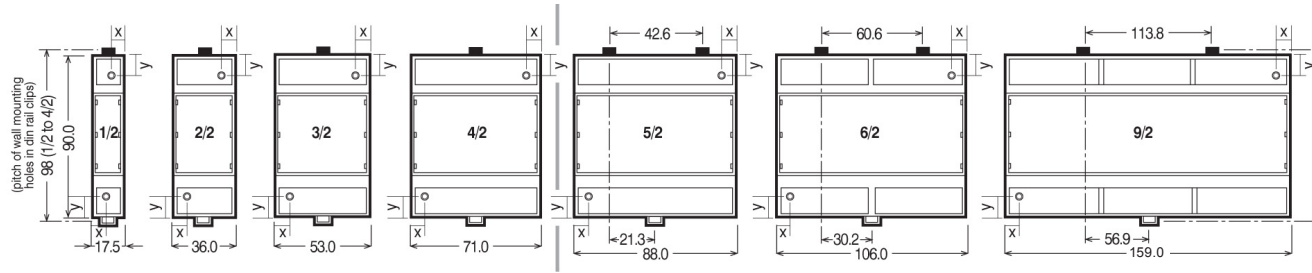


Horizontal PCB Sizes

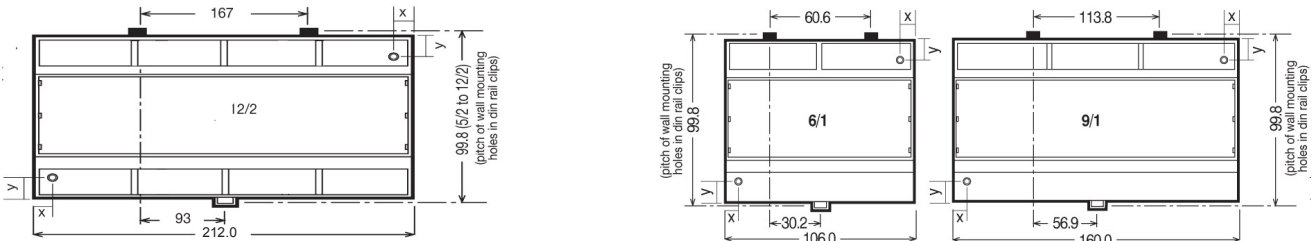


DIN RAIL BOXES

Double Row Terminals/ covers both sides



Single Row Terminals/ covers on one side



Terminal Guards

Solid

| TYPE NO. | STYLE | A | D | E |
|------------|-------|--------|--------|--------|
| CNMB/1/TGS | Solid | 17.5mm | 15.0mm | 14.3mm |
| CNMB/2/TGS | Solid | 35.5mm | 29.9mm | 13.8mm |
| CNMB/3/TGS | Solid | 52.8mm | 45.5mm | 13.8mm |
| CNMB/4/TGS | Solid | 70.6mm | 59.9mm | 13.8mm |
| CNMB/5/TGS | Solid | 87.6mm | 79.5mm | 13.8mm |

*For 6, 9 & 12 Size Module Use CNMB/3TGS

5.08mm pitch perforated

| TYPE NO. | STYLE | A | D | E |
|---------------|-------|--------|--------|--------|
| CNMB/1/TG508P | Solid | 17.5mm | 15.0mm | 14.3mm |
| CNMB/2/TG508P | Solid | 35.5mm | 29.9mm | 13.8mm |
| CNMB/3/TG508P | Solid | 52.8mm | 45.5mm | 13.8mm |
| CNMB/4/TG508P | Solid | 70.6mm | 59.9mm | 13.8mm |
| CNMB/5/TG508P | Solid | 87.6mm | 79.5mm | 13.8mm |

*For 6, 9 & 12 Size Module Use CNMB/3TG508P

5.08mm pitch pre-drilled

| TYPE NO. | STYLE | POLES | A | B | C | D | E |
|--------------|-------------|-------|--------|-------|-------|--------|--------|
| CNMB/1/TG508 | Pre-Drilled | 3 | 17.5mm | 2.3mm | 2.3mm | 15.0mm | 14.3mm |
| CNMB/2/TG508 | Pre-Drilled | 6 | 35.5mm | 0.9mm | 2.7mm | 29.9mm | 13.8mm |
| CNMB/3/TG508 | Pre-Drilled | 9 | 52.8mm | 2.3mm | 2.3mm | 45.5mm | 13.8mm |
| CNMB/4/TG508 | Pre-Drilled | 12 | 70.6mm | 2.7mm | 5.8mm | 59.9mm | 13.8mm |
| CNMB/5/TG508 | Pre-Drilled | 15 | 87.6mm | 2.7mm | 5.8mm | 79.5mm | 13.8mm |

For 6, 9 & 12 Size Module Use CNMB/3/TG508

7.5mm pitch pre-drilled

| TYPE NO. | STYLE | POLES | A | B | C | D | E |
|--------------|-------------|-------|--------|-------|-------|--------|--------|
| CNMB/1/TG750 | Pre-Drilled | 2 | 17.5mm | 2.3mm | 2.3mm | 15.0mm | 14.3mm |
| CNMB/2/TG750 | Pre-Drilled | 4 | 35.5mm | 0.9mm | 2.7mm | 29.9mm | 13.8mm |
| CNMB/3/TG750 | Pre-Drilled | 6 | 52.8mm | 2.3mm | 2.3mm | 45.5mm | 13.8mm |
| CNMB/4/TG750 | Pre-Drilled | 8 | 70.6mm | 2.7mm | 5.8mm | 59.9mm | 13.8mm |
| CNMB/5/TG750 | Pre-Drilled | 10 | 87.6mm | 2.7mm | 5.8mm | 79.5mm | 13.8mm |

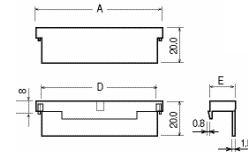
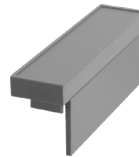
For 6, 9 & 12 Size Module Use CNMB/3/TG750

10.16mm pitch pre-drilled

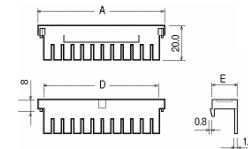
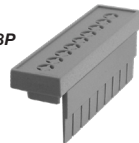
| TYPE NO. | STYLE | POLES | A | B | C | D | E |
|--------------|-------------|-------|--------|-------|-------|--------|--------|
| CNMB/1/TG100 | Pre-Drilled | 2 | 17.5mm | 1.0mm | 1.0mm | 15.0mm | 14.3mm |
| CNMB/2/TG100 | Pre-Drilled | 3 | 35.5mm | 0.9mm | 0.9mm | 29.9mm | 13.8mm |
| CNMB/3/TG100 | Pre-Drilled | 5 | 52.8mm | 1.0mm | 1.0mm | 45.5mm | 13.8mm |
| CNMB/4/TG100 | Pre-Drilled | 6 | 70.6mm | 2.7mm | 2.7mm | 59.9mm | 13.8mm |
| CNMB/5/TG100 | Pre-Drilled | 7 | 87.6mm | 2.7mm | 5.8mm | 79.5mm | 13.8mm |

For 6, 9 & 12 Size Module use CNMB/3/TG100

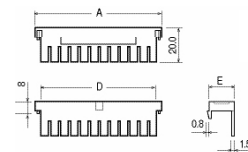
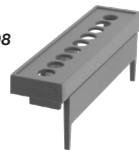
CNMB/ TGS



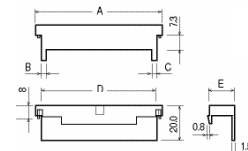
CNMB/ TG508P



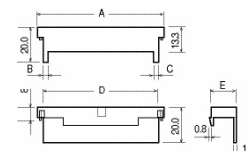
CNMB/ /TG508



CNMB/TG750



CNMB/TG100



UNIVERSAL ENCLOSURES

HAND HELD CASES

HEAVY DUTY ENCLOSURES

DIN RAIL BOXES

INTERFACE SUPPORTS

CONTROL STATIONS

DIECAST & METAL BOXES

DESKTOP & INSTRUMENT CASES

POTTING BOXES

19" ENCLOSURES

19" CABINETS

DEVELOPMENT BOARD ENCLOSURES

CUSTOM SIZED ENCLOSURES

CUSTOM SERVICES



+44 (0)1638 716101
info@camdenboss.com
www.camdenboss.com

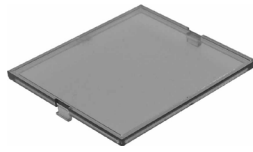
We operate a constant improvement policy, our products are subject to change without notice.

Ver 1.0

CAMDENBOSS
ELECTRONICS & ENCLOSURES

DIN RAIL BOXES

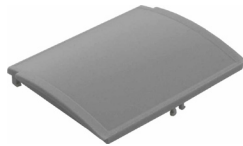
Standard Covers



CNMB/IP

| RED TRANSPARENT | SMOKED TRANSPARENT | CLEAR TRANSPARENT | GREY | SIZE |
|-----------------|--------------------|-------------------|------------|------|
| CNMB/1/IPR | CNMB/1/IPS | CNMB/1/IPC | CNMB/1/PG | 1 |
| CNMB/2/IPR | CNMB/2/IPS | CNMB/2/IPC | CNMB/2/PG | 2 |
| CNMB/3/IPR | CNMB/3/IPS | CNMB/3/IPC | CNMB/3/PG | 3 |
| CNMB/4/IPR | CNMB/4/IPS | CNMB/4/IPC | CNMB/4/PG | 4 |
| CNMB/5/IPR | CNMB/5/IPS | CNMB/5/IPC | CNMB/5/PG | 5 |
| CNMB/6/IPR | CNMB/6/IPS | CNMB/6/IPC | CNMB/6/PG | 6 |
| CNMB/9/IPR | CNMB/9/IPS | CNMB/9/IPC | CNMB/9/PG | 9 |
| CNMB/12/IPR | CNMB/12/IPS | CNMB/12/IPC | CNMB/12/PG | 12 |

Curved Covers



CNMB/PC

| RED TRANSPARENT | SMOKED TRANSPARENT | CLEAR TRANSPARENT | GREY | SIZE |
|-----------------|--------------------|-------------------|------------|------|
| CNMB/1/PRC | CNMB/1/PSC | CNMB/1/PCC | CNMB/1/PGC | 1 |
| CNMB/2/PRC | CNMB/2/PSC | CNMB/2/PCC | CNMB/2/PGC | 2 |
| CNMB/3/PRC | CNMB/3/PSC | CNMB/3/PCC | CNMB/3/PGC | 3 |
| CNMB/4/PRC | CNMB/4/PSC | CNMB/4/PCC | CNMB/4/PGC | 4 |
| CNMB/5/PRC | CNMB/5/PSC | CNMB/5/PCC | CNMB/5/PGC | 5 |
| CNMB/6/PRC | CNMB/6/PSC | CNMB/6/PCC | CNMB/6/PGC | 6 |
| CNMB/9/PRC | CNMB/9/PSC | CNMB/9/PCC | CNMB/9/PGC | 9 |

Curved Hinged Covers

- For use with extended module only



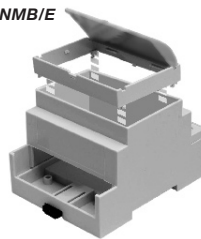
CNMB/HPC

| RED TRANSPARENT | CLEAR TRANSPARENT | GREY | SIZE |
|-----------------|-------------------|-------------|------|
| CNMB/2/HPRC | CNMB/2/HPCC | CNMB/2/HPGC | 2 |
| CNMB/3/HPRC | CNMB/3/HPCC | CNMB/3/HPGC | 3 |
| CNMB/4/HPRC | CNMB/4/HPCC | CNMB/4/HPGC | 4 |
| CNMB/5/HPRC | CNMB/5/HPCC | CNMB/5/HPGC | 5 |
| CNMB/6/HPRC | CNMB/6/HPCC | CNMB/6/HPGC | 6 |
| CNMB/9/HPRC | CNMB/9/HPCC | CNMB/9/HPGC | 9 |

Extended Height Module

- 16mm high
- Accepts hinged, curved lid
- Adds an additional horizontal PCB slot

CNMB/E



| TYPE NO. | WIDTH | SIZE |
|----------|---------|------|
| CNMB/2/E | 34.7mm | 2 |
| CNMB/3/E | 52.0mm | 3 |
| CNMB/4/E | 70.0mm | 4 |
| CNMB/5/E | 86.5mm | 5 |
| CNMB/6/E | 104.5mm | 6 |
| CNMB/9/E | 157.7mm | 9 |

Kits

- Each kit contains one grey panel cover and a selection of solid and perforated terminal guards.
- Kits of the most frequently used components are available to order.



CNMB/ST/KIT

| KIT | KIT PART NO. | EXTENSION MODULE | | | |
|-----------------|--------------|------------------|---------|----------|-------|
| | | COMPONENT | COVER | TERMINAL | GUARD |
| STANDARD | CNMB/1/KIT | /PG | /TG508P | /TGS | /E |
| | CNMB/1/KIT | 1 | 2 | 1 | - |
| | CNMB/2/KIT | 1 | 2 | 1 | - |
| | CNMB/3/KIT | 1 | 2 | 1 | - |
| | CNMB/4/KIT | 1 | 2 | 1 | - |
| | CNMB/5/KIT | 1 | 2 | 1 | - |
| | CNMB/6/KIT | 1 | 4* | 2* | - |
| | CNMB/9/KIT | 1 | 6* | 3* | - |
| CNMB/12/KIT | 1 | 8* | 4* | - | |
| EXTENDED HEIGHT | CNMB/1E/KIT | /HPCC | | | |
| | CNMB/1E/KIT | 1 | 2 | 1 | 1 |
| | CNMB/2E/KIT | 1 | 2 | 1 | 1 |
| | CNMB/3E/KIT | 1 | 2 | 1 | 1 |
| | CNMB/4E/KIT | 1 | 2 | 1 | 1 |
| | CNMB/5E/KIT | 1 | 2 | 1 | 1 |
| | CNMB/6E/KIT | 1 | 4* | 2* | 1 |
| | CNMB/9E/KIT | 1 | 6* | 3* | 1 |
| CNMB/12E/KIT | 1 | 8* | 4* | 1 | |

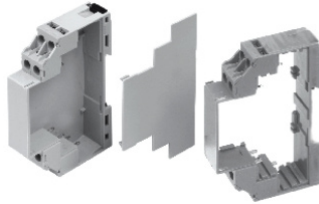
* For size 6, 9 and 12, multiple 'size 3' terminal guards are supplied. For example size 6 requires 2 x 'size 3' guards per side. Kits are also available for vented, solid top and extended wall bodies e.g. CNMB/2ST/KIT Where a box has only one open side (e.g. CNMB/5/1) no solid terminal guards are supplied.

DIN RAIL BOXES

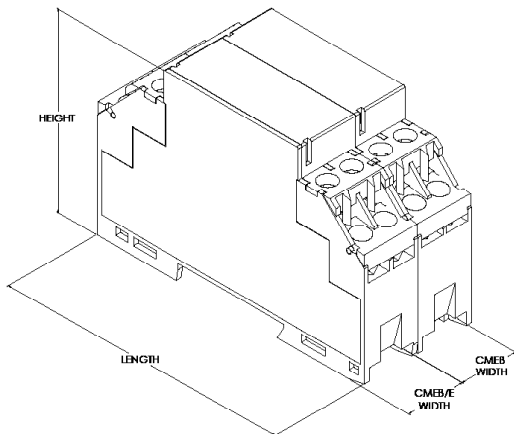
Extendable Module Box

- 17.5mm width module box, extendable
- Box has a detachable end plate
- Extension box is sideless
- Each module, has 8 removable screw terminals
- Top hat 35mm DIN rail or surface mounting
- Moulded in flame retardant UL94-V0

CMEB



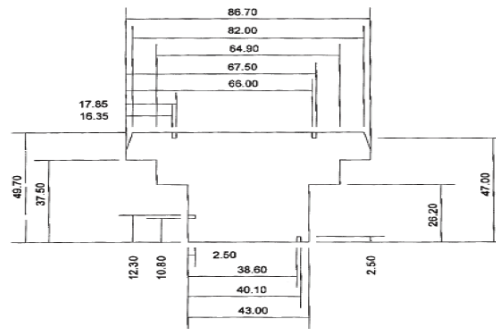
| TYPE NO. | LENGTH | WIDTH | HEIGHT | DESCRIPTION |
|----------|--------|--------|--------|-------------------|
| CMEB | 90mm | 17.5mm | 59mm | 17.5mm Module box |
| CMEB/E | 90mm | 17.5mm | 59mm | Extension |



SPECIFICATION

| | |
|---------------------|--|
| Rating Terminals | 8A/250VAC |
| Cable entry | 2x2.5mm ² Solid or Standard |
| Terminal protection | IP20 |

CMEB max PCB Dimensions



CMEB/E max PCB Dimensions



UNIVERSAL ENCLOSURES

HAND HELD CASES

HEAVY DUTY ENCLOSURES

DIN RAIL BOXES

INTERFACE SUPPORTS

CONTROL STATIONS

DIECAST & METAL BOXES

DESKTOP & INSTRUMENT CASES

POTTING BOXES

19" ENCLOSURES

19" CABINETS

DEVELOPMENT BOARD ENCLOSURES

CUSTOM SIZED ENCLOSURES

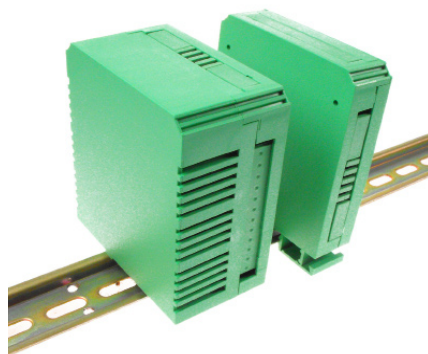
CUSTOM SERVICES

DIN RAIL BOXES

Vertical Box for DIN Rail

- Designed for 5mm pitch terminal blocks
- Two sizes, 22.5mm or 45mm wide
- Solid & perforated plates to cover unused terminal areas
- Three sides accept 12-way terminal blocks each side
- Complete box contains one 12-way closed, three 4-way closed & three 4-way perforated plates

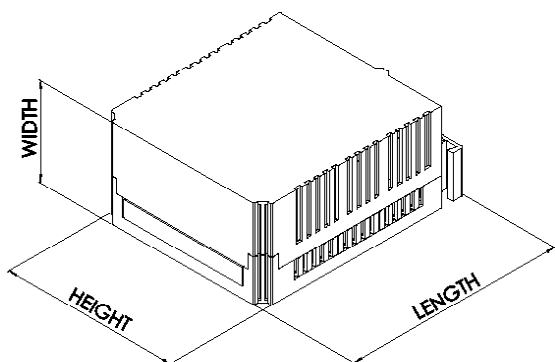
CVB



SPECIFICATION

| | |
|---------------------|--|
| Rating Terminals | 8A/250VAC |
| Cable entry | 2x2.5mm ² Solid or Standard |
| Terminal protection | IP20 |
| Material | PA66 UL94-V0 |

| TYPE NO. | DESCRIPTION | SIZE |
|------------|----------------------|----------------------|
| CVB225/KIT | Complete plastic box | 22.5x82x101.75mm |
| CVB450/KIT | Complete plastic box | 45x82x101.75mm |
| CVBPF4 | 4 way perforated | CVB Vent Plate |
| CVBPP4 | 4 way closed plate | CVB Blind Plate |
| CVBPP12 | 12 way closed plate | CVB Blind Plate Long |
| CVBMSC | Prototyping board | |



UNIVERSAL ENCLOSURES

HAND HELD CASES

HEAVY DUTY ENCLOSURES

DIN RAIL BOXES

INTERFACE SUPPORTS

CONTROL STATIONS

DIECAST & METAL BOXES

DESKTOP & INSTRUMENT CASES

POTTING BOXES

19" ENCLOSURES

19" CABINETS

DEVELOPMENT BOARD ENCLOSURES

CUSTOM SIZED ENCLOSURES

CUSTOM SERVICES

DIN RAIL BOXES

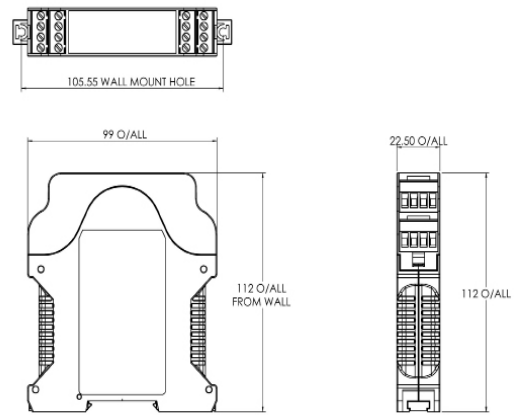
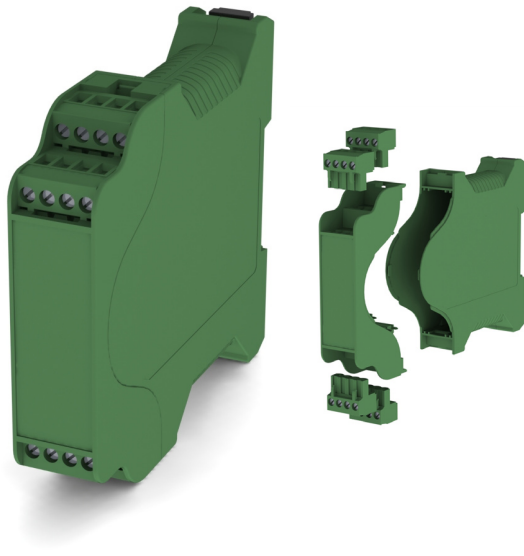
CVB-PLUS

- 22.5mm wide Vertical DIN Rail Mount Housing
- Supplied with four 4-pole 5mm pitch pluggable terminal blocks
- Moulded in UL94-V0, PA66
- Front and side label recesses
- Solid and vented versions available
- Top Hat 35mm DIN Rail or Surface Mounting

SPECIFICATION

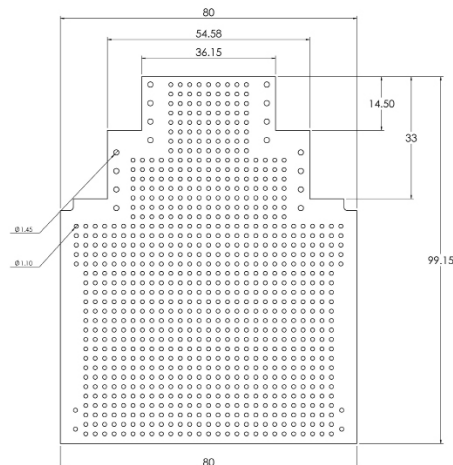
| | |
|-----------------------|-------------------|
| Rating Terminals | 15A 300V |
| Contact resistance | 20mΩ |
| Insulation resistance | 500mΩ/DC500V |
| Withstand voltage | AC2000V/1min |
| Materials: Pin header | Brass, tin plated |
| Housing | PA66, UL94-V0 |

| TYPE NO. | DESCRIPTION | SIZE |
|------------|--------------|-----------------------|
| CVB-PLUS1 | Solid sides | 112mm x 22.5mm x 99mm |
| CVB-PLUS1V | Vented Sides | 112mm x 22.5mm x 99mm |



CVB-PLUS PCB

| TYPE NO. | DESCRIPTION | SIZE |
|--------------|-------------|-----------------------|
| CVB-PLUS-PCB | PCB | 80mm x 99.2mm x 1.6mm |



UNIVERSAL ENCLOSURES

HAND HELD CASES

HEAVY DUTY ENCLOSURES

DIN RAIL BOXES

INTERFACE SUPPORTS

CONTROL STATIONS

DIECAST & METAL BOXES

DESKTOP & INSTRUMENT CASES

POTTING BOXES

19" ENCLOSURES

19" CABINETS

DEVELOPMENT BOARD ENCLOSURES

CUSTOM SIZED ENCLOSURES

CUSTOM SERVICES



+44 (0)1638 716101
 info@camdenboss.com
 www.camdenboss.com

We operate a constant improvement policy, our products are subject to change without notice.

Ver 1.0

CAMDENBOSS
 ELECTRONICS & ENCLOSURES

DIN RAIL BOXES

DIN Rail Instrument Boxes

*UNIVERSAL
ENCLOSURES*

*HAND
HELD
CASES*

*HEAVY
DUTY
ENCLOSURES*

*DIN
RAIL
BOXES*

*INTERFACE
SUPPORTS*

*CONTROL
STATIONS*

*DIECAST
& METAL
BOXES*

*DESKTOP &
INSTRUMENT
CASES*

*POTTING
BOXES*

*19"
ENCLOSURES*

*19"
CABINETS*

*DEVELOPMENT
BOARD
ENCLOSURES*

*CUSTOM
SIZED
ENCLOSURES*

*CUSTOM
SERVICES*

DIN RAIL BOXES

Controls Housing (DIN Rail mounting)

- 12 terminals
- Internal PCB guides
- Snap fit DIN Rail mounting fixtures
- Moulded in Grey Flame Retardant UL94-V0 PC
- Removable top cover
- Integral marker plate
- For G-rail mounting adaptors available
- Terminals have PCB pins to minimize internal wiring

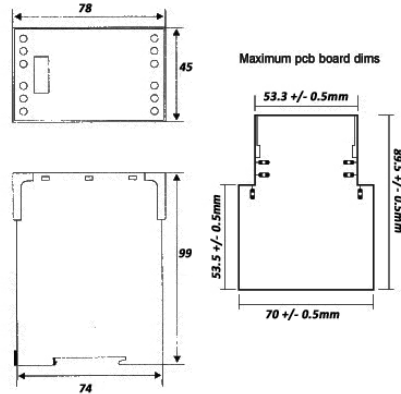
CCH12



| TYPE NO. | DESCRIPTION |
|----------|------------------------------|
| CCH12 | 12 terminal controls housing |

SPECIFICATION

| | | |
|-------------|----------|-----------------------|
| Rating | 250VAC | 10A |
| Cable entry | Solid | 2x2.5 mm ² |
| | Stranded | 2x1.5mm ² |



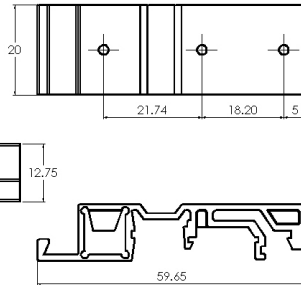
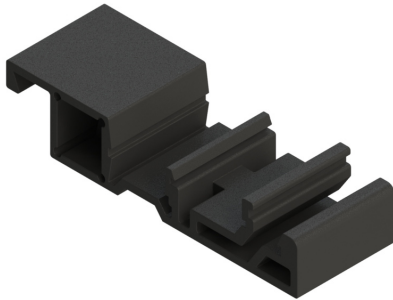
DIN Rail Mount Bracket

DIN Rail Mount Bracket enables enclosures to be DIN Rail Mounted

- Supplied screws allow the DIN Rail Mount Bracket to fasten to the enclosure surface. Two clearance holes will need to be drilled into the enclosure
- The DIN Rail Mount bracket is designed for Standard Top Hat 35mm DIN Rail, Mini Top Hat 15mm Rail and G Section 32mm Rail
- For wide enclosures it is recommended to use 2x Brackets

SPECIFICATION

| | |
|------------------------|--------------------------------------|
| Material | UL94-V0, PA68 |
| Operating Temperature | -20°C to +85°C |
| Colour | Black Ral 9005 |
| Standard unit includes | 1x DIN Rail Mount Bracket, 2x Screws |



| TYPE NO. | DESCRIPTION |
|-------------|------------------------|
| CDR-BRACKET | DIN Rail Mount Bracket |

DIN Rail Adaptor

A one piece adaptor to adapt relay bases and enclosures to G-rail and mini DIN rails

- Snap fit Din Rail mounting fixtures
- Moulded in Flame retardant UL94-V0
- Symmetrical (35mm)
- Asymmetrical (G-rail)
- Mini Symmetrical (15mm)

CDR/Adaptor

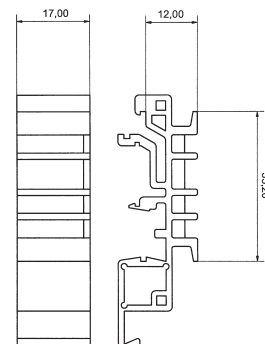


| TYPE NO. | DESCRIPTION |
|-------------|------------------|
| CDR/Adaptor | DIN Rail Adaptor |

Mini Top Hat 15mm

Standard Top Hat 3:

G Section 32mm



+44 (0)1638 716101
info@camdenboss.com
www.camdenboss.com

We operate a constant improvement policy, our products are subject to change without notice.

Ver 1.0

UNIVERSAL ENCLOSURES

HAND HELD CASES

HEAVY DUTY ENCLOSURES

DIN RAIL BOXES

INTERFACE SUPPORTS

CONTROL STATIONS

DIECAST & METAL BOXES

DESKTOP & INSTRUMENT CASES

POTTING BOXES

19" ENCLOSURES

19" CABINETS

DEVELOPMENT BOARD ENCLOSURES

CUSTOM SIZED ENCLOSURES

CUSTOM SERVICES

X-ON Electronics

Largest Supplier of Electrical and Electronic Components

Click to view similar products for [camden manufacturer](#):

Other Similar products are found below :

[412689X](#) [CTBP92VE/12R](#) [CTBP9350/12](#) [IND515205-240-T/GRN](#) [IND515205-240-T/RD](#) [IND5032405-240-T/GRN](#) [CE10.00.EI](#)
[C192SHAND](#) [CNMB/6ST/2](#) [CNMB/4ST/2](#) [CSACST004](#) [CTBP9200/9](#) [CIME/M/BE2250SS](#) [CHH64E1BL](#) [CIM/15W-DMFS](#) [CHHBAT2GY](#)
[CFTBN/2](#) [CCB2S1/04](#) [CHDX6-221C](#) [CHDX8-224](#) [CHDASMP29](#) [CHDASMP34](#) [CHDX810DD](#) [CHDX811DD](#) [CCTTM40LR](#)
[CTBP92VJ/5S](#) [CTBP92VJ/8R](#) [CTSN431/12/M](#) [CTSN433/12/M](#) [CUABOX006](#) [CE10.00.FM](#) [CBRPH-BLK](#) [BIM2003/13-WH/WH](#)
[RX2008/S-5-WH](#) [CBARD-CAR](#) [CRDCG0007](#) [CNMB/4/KIT](#) [CTB5050/5](#) [CTBP92HE/11](#) [CTBP9358/10AO](#) [CHH66C2GY](#) [CHH456PBK](#)
[CHH451ABK](#) [CIM/9W-DMFS](#) [CIM/25W-DMFS](#) [RTM5006/16-NC-BLK](#) [IND5032405-125-T/AMB](#) [CCB1S1/03](#) [CCD2S1/04](#) [CCE1S1/05](#)