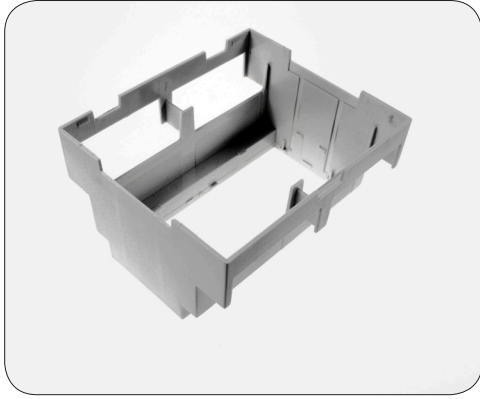
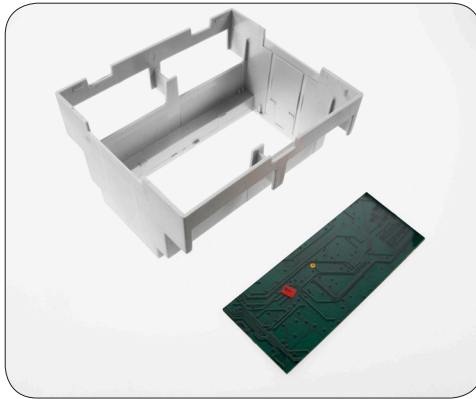


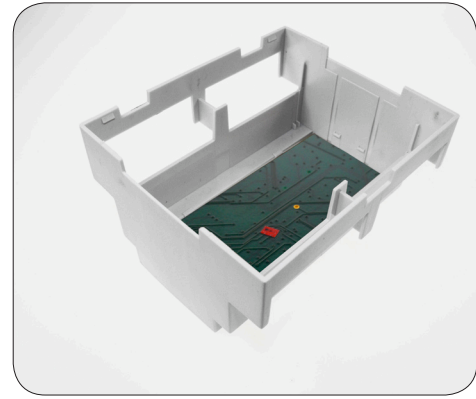
Assembly of CNMB Enclosure



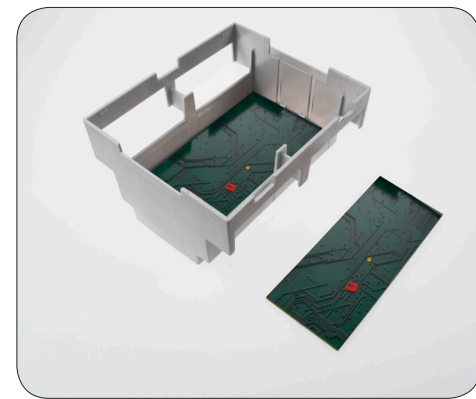
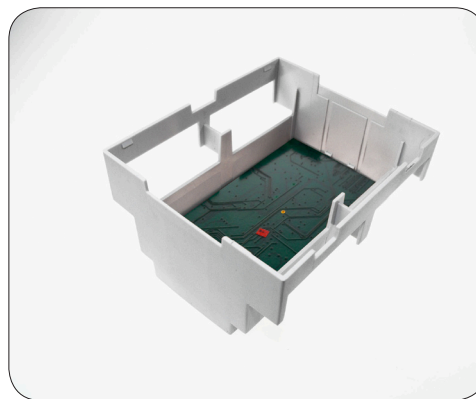
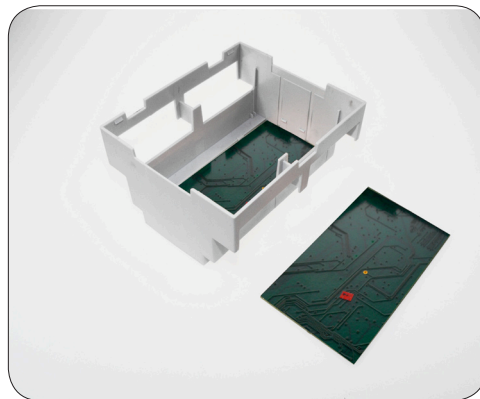
- The Module Box is designed to hold a number of PCB's which snap fit into place



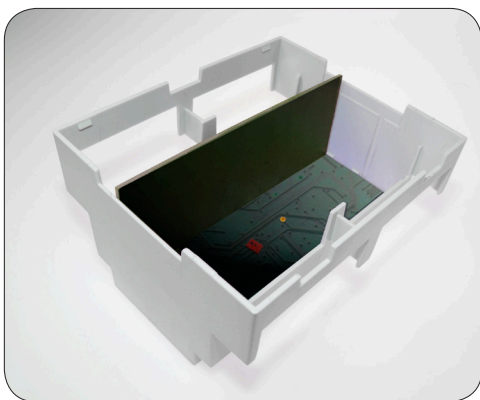
- Each Module Box can hold up to 3 PCB's horizontally and 2/4 vertically



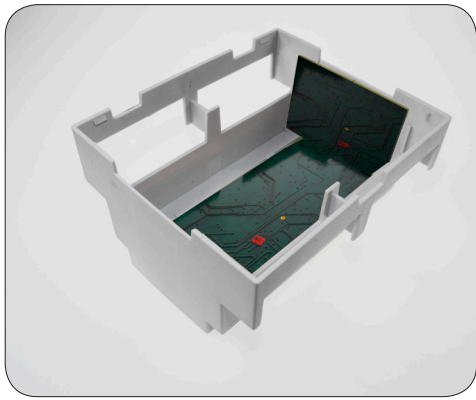
- PCB in top position



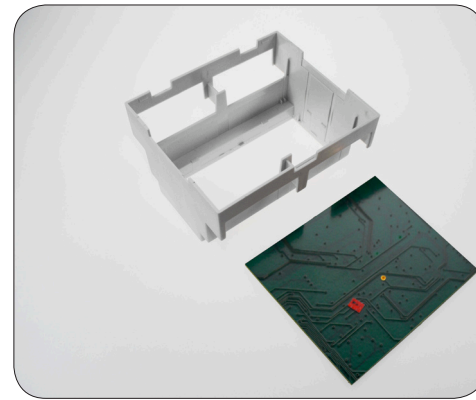
- PCB second position

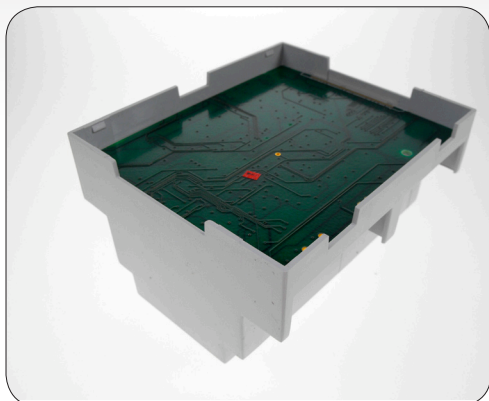


- PCB vertical mount

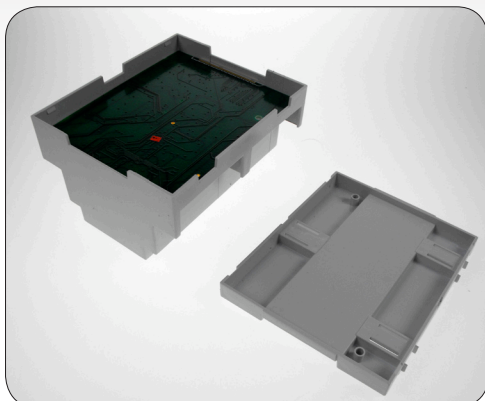


- PCB vertical mount second option

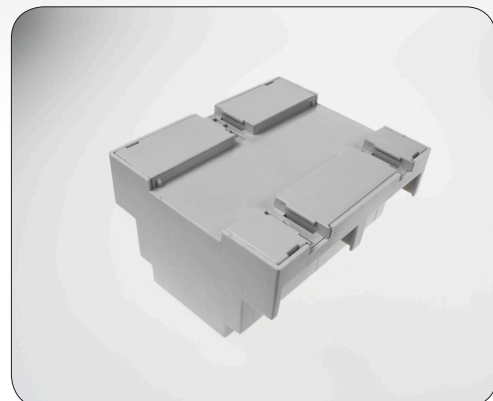




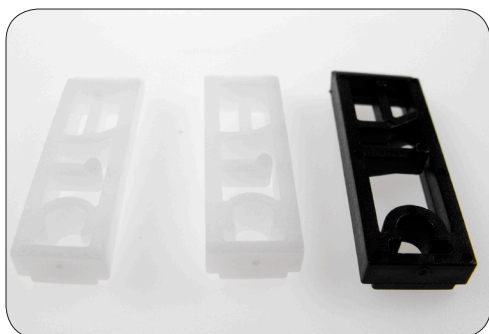
- PCB base position



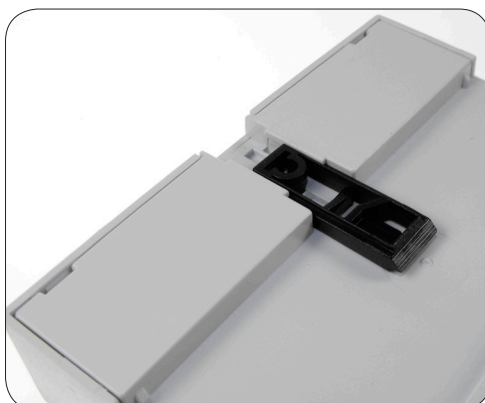
- Once the required circuitry is in place the base and top can be put on. These also snap fit into place.



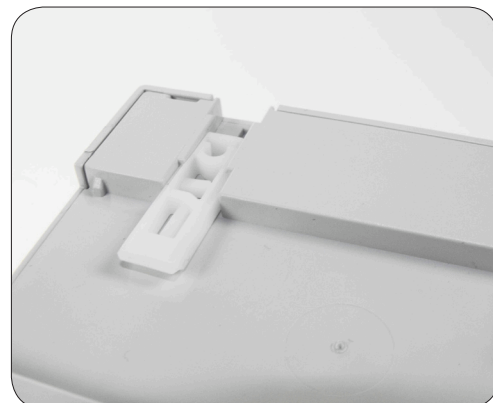
- Base is now connected



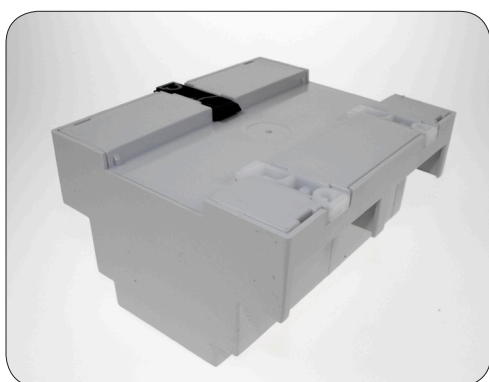
- The Module box kit comes with clips, allowing steady fastening of its base and snap fit connection to Din Rails.



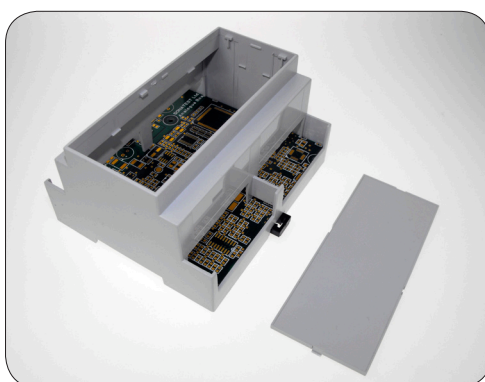
- Each clip slides and clicks into place



- Push in from the inside toward the outside



- Clips are now connected



- Module Box with top cover. (These are available in grey transparent and red)



- Top cover connected



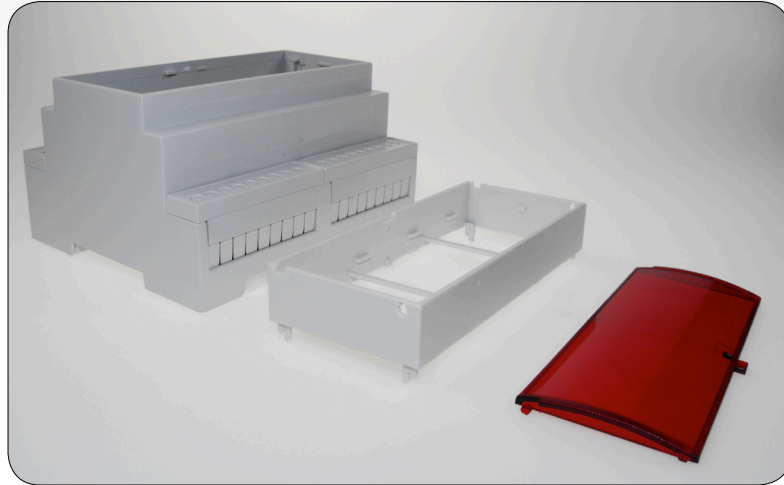
- Various Terminal Guards are available allowing for different capabilities



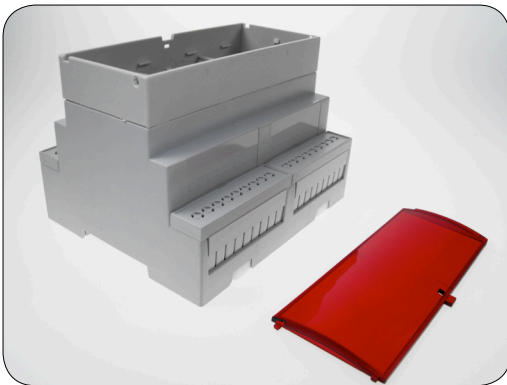
- Terminal Guards also snap fit into place and are inter-changeable



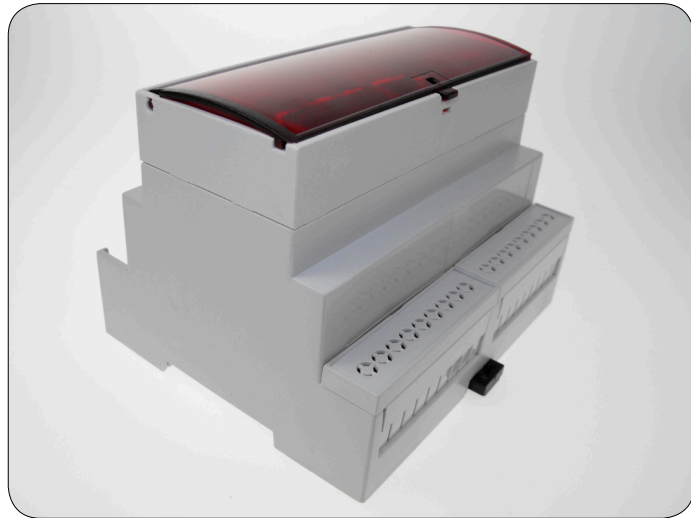
- Finished Module Box



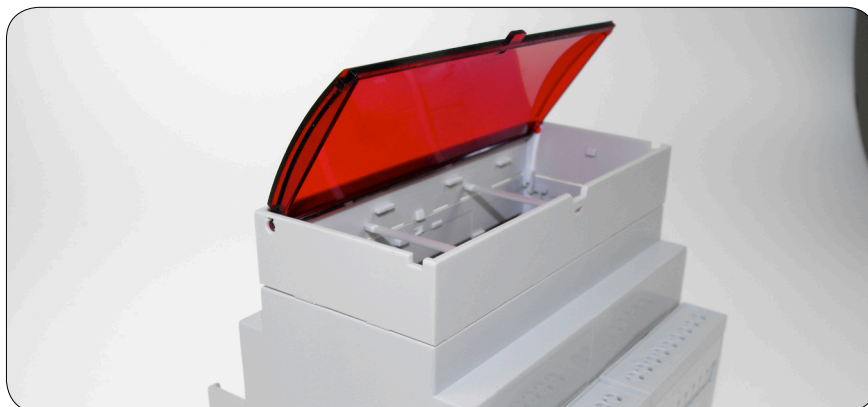
- Also available for the CNMB series are the Extended Height Module range



- The Height Module snap clicks into place and can house an additional PCB



- The curved and hinged lids also are available in grey and transparent



- The moveable lid allowing easy access to the housed PCB board

X-ON Electronics

Largest Supplier of Electrical and Electronic Components

Click to view similar products for [camden manufacturer](#):

Other Similar products are found below :

[412689X](#) [CTBP92VE/12R](#) [CTBP9350/12](#) [IND515205-240-T/GRN](#) [IND515205-240-T/RD](#) [IND5032405-240-T/GRN](#) [CE10.00.EI](#)
[C192SHAND](#) [CNMB/6ST/2](#) [CNMB/4ST/2](#) [CSACST004](#) [CTBP9200/9](#) [CIME/M/BE2250SS](#) [CHH64E1BL](#) [CIM/15W-DMFS](#) [CHHBAT2GY](#)
[CFTBN/2](#) [CCB2S1/04](#) [CHDX6-221C](#) [CHDX8-224](#) [CHDASMP29](#) [CHDASMP34](#) [CHDX810DD](#) [CHDX811DD](#) [CCTTM40LR](#)
[CTBP92VJ/5S](#) [CTBP92VJ/8R](#) [CTSN431/12/M](#) [CTSN433/12/M](#) [CUABOX006](#) [CE10.00.FM](#) [CBRPH-BLK](#) [BIM2003/13-WH/WH](#)
[RX2008/S-5-WH](#) [CBARD-CAR](#) [CRDCG0007](#) [CNMB/4/KIT](#) [CTB5050/5](#) [CTBP92HE/11](#) [CTBP9358/10AO](#) [CHH66C2GY](#) [CHH456PBK](#)
[CHH451ABK](#) [CIM/9W-DMFS](#) [CIM/25W-DMFS](#) [RTM5006/16-NC-BLK](#) [IND5032405-125-T/AMB](#) [CCB1S1/03](#) [CCD2S1/04](#) [CCE1S1/05](#)