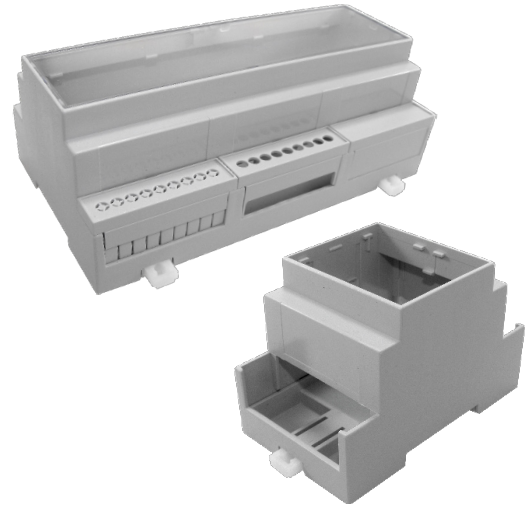


DIN RAIL BOXES

DIN Rail Standard Height Module Boxes

- Snap fit modular design for ease of assembly and custom kitting
- Base fits 35mm DIN rail or directly to flat surface
- Moulded in light grey UL94-V0 flame retardant polycarbonate
- Carries up to 3 PCBs horizontally or 2 vertically
- Snap fit terminal cover options for IP20 finger protection
- Snap in covers available in grey, clear, transparent red and smoked
- Standard enclosure consists of base, top and rail/wall clips
- Open top as standard, solid top, vented and extended wall options available
- Covers and terminal guards ordered separately and can be supplied in kits
- Easily customised covers and terminal guards
- Enclosed base offers isolation from DIN rail
- Front panel ideal for screen printing and recessed solid top for labels and membranes
- Other colours and EMC shielding available to order

CNMB



	BOX LENGTH	HORIZONTAL PCB SIZES			VERTICAL PCB SIZES		PCB FIXING BOSS	
		A	B	C	D	E	X	Y
CNMB/1-	17.5mm	86.5x14mm	57x14mm	41.8x14mm	34x59.6mm	40x14.8mm	6.2mm	18.3mm
CNMB/2-	36mm	86.5x33mm	57x32mm	42x32mm	34x59.6mm	40x33mm	6.2mm	18.3mm
CNMB/3-	53mm	86.5x50mm	57x49mm	42x49mm	34x59.6mm	40x50mm	8.8mm	18.3mm
CNMB/4-	71mm	86.5x68mm	57x67mm	42x67mm	34x59.6mm	40x68mm	8.8mm	18.3mm
CNMB/5-	88mm	86.5x84mm	57x83mm	42x83mm	34x59.6mm	40x84mm	8.8mm	18.3mm
CNMB/6-	106mm	86.5x103mm	57x102mm	42x102mm	34x59.6mm	40x103mm	8.9mm	18.3mm
CNMB/9-	159mm	86.5x156mm	57x155.5mm	42x155mm	34x59.6mm	40x155mm	8.9mm	18.3mm
CNMB/12-	212mm	86.5x208mm	57x207mm	42x207mm	34x59.6mm	40x208mm	8.9mm	18.3mm

For double row terminals covers both sides, add /2 to type No. (e.g. CNMB/3/2)

For single row terminals cover one side only, add /1 to type No. (e.g. CNMB/3/1)

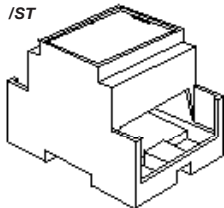
Box supplied with open top as standard

For solid recessed top used for membrane keypads or clear covers to enclose labels, add /ST to type No. (e.g. CNMB/3ST/2)

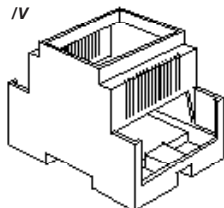
For cooling vents both sides add /V to type No. (e.g. CNMB/3/V/2)

For extended side walls which meet the lower PCB behind terminals, add /W to type No. (e.g. CNMB/3W/2)

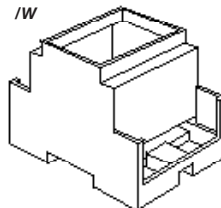
Solid Top /ST



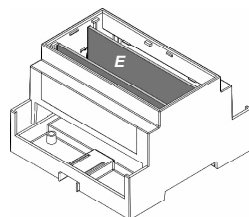
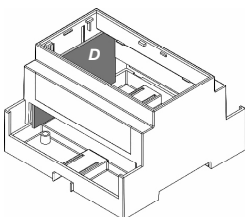
Vented Sides /V



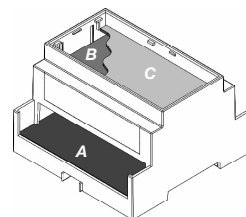
Extended Walls /W



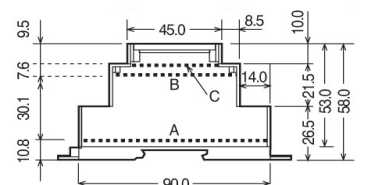
Vertical PCB Positions



Horizontal PCB Positions

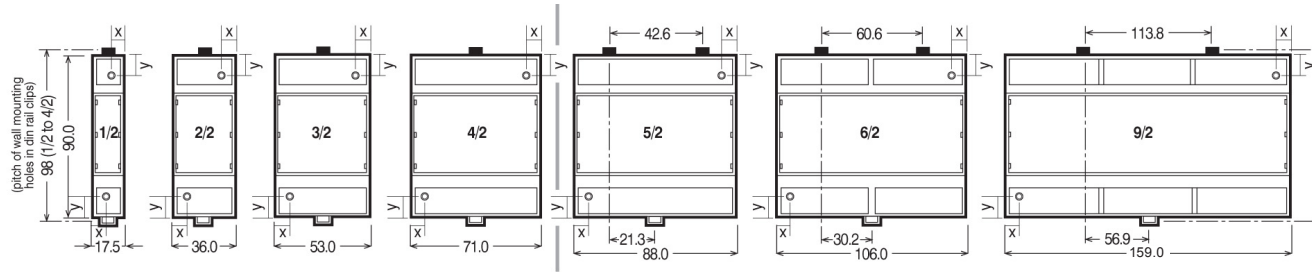


Horizontal PCB Sizes

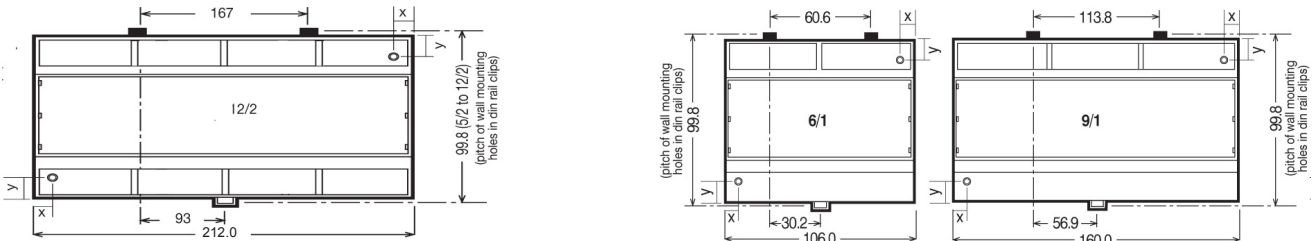


DIN RAIL BOXES

Double Row Terminals/ covers both sides



Single Row Terminals/ covers on one side



Terminal Guards

Solid

TYPE NO.	STYLE	A	D	E
CNMB/1/TGS	Solid	17.5mm	15.0mm	14.3mm
CNMB/2/TGS	Solid	35.5mm	29.9mm	13.8mm
CNMB/3/TGS	Solid	52.8mm	45.5mm	13.8mm
CNMB/4/TGS	Solid	70.6mm	59.9mm	13.8mm
CNMB/5/TGS	Solid	87.6mm	79.5mm	13.8mm

*For 6, 9 & 12 Size Module Use CNMB/3TGS

5.08mm pitch perforated

TYPE NO.	STYLE	A	D	E
CNMB/1/TG508P	Solid	17.5mm	15.0mm	14.3mm
CNMB/2/TG508P	Solid	35.5mm	29.9mm	13.8mm
CNMB/3/TG508P	Solid	52.8mm	45.5mm	13.8mm
CNMB/4/TG508P	Solid	70.6mm	59.9mm	13.8mm
CNMB/5/TG508P	Solid	87.6mm	79.5mm	13.8mm

*For 6, 9 & 12 Size Module Use CNMB/3TG508P

5.08mm pitch pre-drilled

TYPE NO.	STYLE	POLES	A	B	C	D	E
CNMB/1/TG508	Pre-Drilled	3	17.5mm	2.3mm	2.3mm	15.0mm	14.3mm
CNMB/2/TG508	Pre-Drilled	6	35.5mm	0.9mm	2.7mm	29.9mm	13.8mm
CNMB/3/TG508	Pre-Drilled	9	52.8mm	2.3mm	2.3mm	45.5mm	13.8mm
CNMB/4/TG508	Pre-Drilled	12	70.6mm	2.7mm	5.8mm	59.9mm	13.8mm
CNMB/5/TG508	Pre-Drilled	15	87.6mm	2.7mm	5.8mm	79.5mm	13.8mm

For 6, 9 & 12 Size Module Use CNMB/3/TG508

7.5mm pitch pre-drilled

TYPE NO.	STYLE	POLES	A	B	C	D	E
CNMB/1/TG750	Pre-Drilled	2	17.5mm	2.3mm	2.3mm	15.0mm	14.3mm
CNMB/2/TG750	Pre-Drilled	4	35.5mm	0.9mm	2.7mm	29.9mm	13.8mm
CNMB/3/TG750	Pre-Drilled	6	52.8mm	2.3mm	2.3mm	45.5mm	13.8mm
CNMB/4/TG750	Pre-Drilled	8	70.6mm	2.7mm	5.8mm	59.9mm	13.8mm
CNMB/5/TG750	Pre-Drilled	10	87.6mm	2.7mm	5.8mm	79.5mm	13.8mm

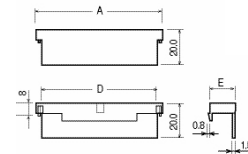
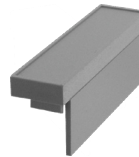
For 6, 9 & 12 Size Module Use CNMB/3/TG750

10.16mm pitch pre-drilled

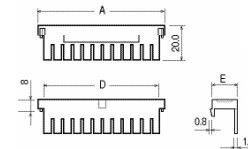
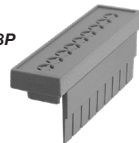
TYPE NO.	STYLE	POLES	A	B	C	D	E
CNMB/1/TG100	Pre-Drilled	2	17.5mm	1.0mm	1.0mm	15.0mm	14.3mm
CNMB/2/TG100	Pre-Drilled	3	35.5mm	0.9mm	0.9mm	29.9mm	13.8mm
CNMB/3/TG100	Pre-Drilled	5	52.8mm	1.0mm	1.0mm	45.5mm	13.8mm
CNMB/4/TG100	Pre-Drilled	6	70.6mm	2.7mm	2.7mm	59.9mm	13.8mm
CNMB/5/TG100	Pre-Drilled	7	87.6mm	2.7mm	5.8mm	79.5mm	13.8mm

For 6, 9 & 12 Size Module use CNMB/3/TG100

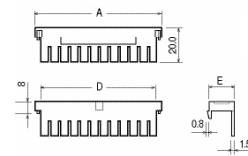
CNMB/ TGS



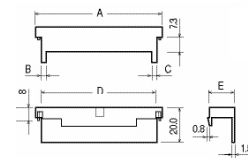
CNMB/ TG508P



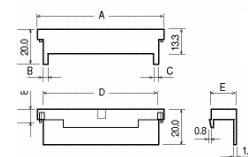
CNMB/ /TG508



CNMB/TG750



CNMB/TG100



UNIVERSAL ENCLOSURES

HAND HELD CASES

HEAVY DUTY ENCLOSURES

DIN RAIL BOXES

INTERFACE SUPPORTS

CONTROL STATIONS

DIECAST & METAL BOXES

DESKTOP & INSTRUMENT CASES

POTTING BOXES

19" ENCLOSURES

19" CABINETS

DEVELOPMENT BOARDS

CUSTOM SIZED ENCLOSURES

CUSTOM SERVICES



+44 (0)1638 716101
info@camdenboss.com
www.camdenboss.com

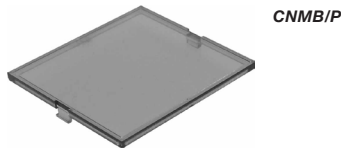
We operate a constant improvement policy, our products are subject to change without notice.

Ver 1.0

CAMDENBOSS
ELECTRONICS & ENCLOSURES

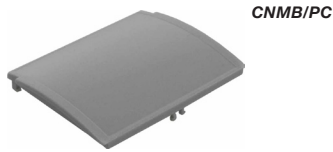
DIN RAIL BOXES

Standard Covers



RED TRANSPARENT	SMOKED TRANSPARENT	CLEAR TRANSPARENT	GREY	SIZE
CNMB/1/PR	CNMB/1/PS	CNMB/1/PC	CNMB/1/PG	1
CNMB/2/PR	CNMB/2/PS	CNMB/2/PC	CNMB/2/PG	2
CNMB/3/PR	CNMB/3/PS	CNMB/3/PC	CNMB/3/PG	3
CNMB/4/PR	CNMB/4/PS	CNMB/4/PC	CNMB/4/PG	4
CNMB/5/PR	CNMB/5/PS	CNMB/5/PC	CNMB/5/PG	5
CNMB/6/PR	CNMB/6/PS	CNMB/6/PC	CNMB/6/PG	6
CNMB/9/PR	CNMB/9/PS	CNMB/9/PC	CNMB/9/PG	9
CNMB/12/PR	CNMB/12/PS	CNMB/12/PC	CNMB/12/PG	12

Curved Covers



RED TRANSPARENT	SMOKED TRANSPARENT	CLEAR TRANSPARENT	GREY	SIZE
CNMB/1/PRC	CNMB/1/PSC	CNMB/1/PCC	CNMB/1/PGC	1
CNMB/2/PRC	CNMB/2/PSC	CNMB/2/PCC	CNMB/2/PGC	2
CNMB/3/PRC	CNMB/3/PSC	CNMB/3/PCC	CNMB/3/PGC	3
CNMB/4/PRC	CNMB/4/PSC	CNMB/4/PCC	CNMB/4/PGC	4
CNMB/5/PRC	CNMB/5/PSC	CNMB/5/PCC	CNMB/5/PGC	5
CNMB/6/PRC	CNMB/6/PSC	CNMB/6/PCC	CNMB/6/PGC	6
CNMB/9/PRC	CNMB/9/PSC	CNMB/9/PCC	CNMB/9/PGC	9

Curved Hinged Covers

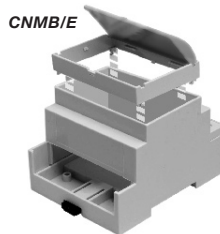
- For use with extended module only



RED TRANSPARENT	CLEAR TRANSPARENT	GREY	SIZE
CNMB/2/HPRC	CNMB/2/HPCC	CNMB/2/HPGC	2
CNMB/3/HPRC	CNMB/3/HPCC	CNMB/3/HPGC	3
CNMB/4/HPRC	CNMB/4/HPCC	CNMB/4/HPGC	4
CNMB/5/HPRC	CNMB/5/HPCC	CNMB/5/HPGC	5
CNMB/6/HPRC	CNMB/6/HPCC	CNMB/6/HPGC	6
CNMB/9/HPRC	CNMB/9/HPCC	CNMB/9/HPGC	9

Extended Height Module

- 16mm high
- Accepts hinged, curved lid
- Adds an additional horizontal PCB slot



TYPE NO.	WIDTH	SIZE
CNMB/2/E	34.7mm	2
CNMB/3/E	52.0mm	3
CNMB/4/E	70.0mm	4
CNMB/5/E	86.5mm	5
CNMB/6/E	104.5mm	6
CNMB/9/E	157.7mm	9

Kits

- Each kit contains one grey panel cover and a selection of solid and perforated terminal guards.
- Kits of the most frequently used components are available to order.



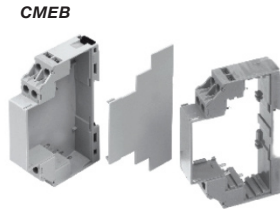
KIT	COMPONENT KIT PART NO.	COVER /PG	TERMINAL /TG508P	GUARD /TGS	EXTENSION MODULE
					/E
STANDARD	CNMB/1/KIT	1	2	1	-
	CNMB/2/KIT	1	2	1	-
	CNMB/3/KIT	1	2	1	-
	CNMB/4/KIT	1	2	1	-
	CNMB/5/KIT	1	2	1	-
	CNMB/6/KIT	1	4*	2*	-
	CNMB/9/KIT	1	6*	3*	-
EXTENDED HEIGHT	CNMB/12/KIT	1	8*	4*	-
					/HPCC
	CNMB/1E/KIT	1	2	1	1
	CNMB/2E/KIT	1	2	1	1
	CNMB/3E/KIT	1	2	1	1
	CNMB/4E/KIT	1	2	1	1
	CNMB/5E/KIT	1	2	1	1
	CNMB/6E/KIT	1	4*	2*	1
CNMB/9E/KIT	1	6*	3*	1	
CNMB/12E/KIT	1	8*	4*	1	

* For size 6, 9 and 12, multiple 'size 3' terminal guards are supplied. For example size 6 requires 2 x 'size 3' guards per side. Kits are also available for vented, solid top and extended wall bodies e.g. CNMB/2ST/KIT Where a box has only one open side (e.g. CNMB/5/1) no solid terminal guards are supplied.

DIN RAIL BOXES

Extendable Module Box

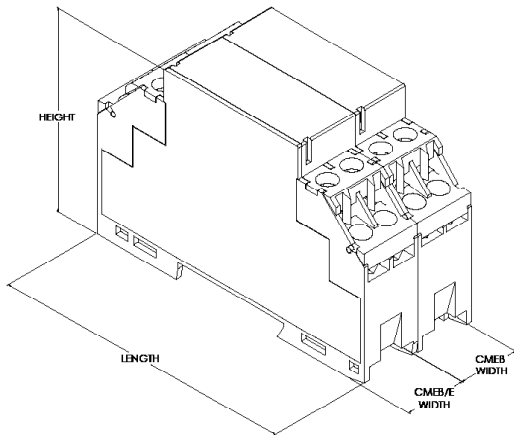
- 17.5mm width module box, extendable
- Box has a detachable end plate
- Extension box is sideless
- Each module, has 8 removable screw terminals
- Top hat 35mm DIN rail or surface mounting
- Moulded in flame retardant UL94-V0



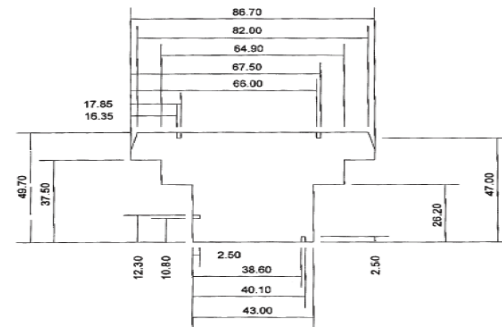
SPECIFICATION

Rating Terminals	8A/250VAC
Cable entry	2x2.5mm ² Solid or Standard
Terminal protection	IP20

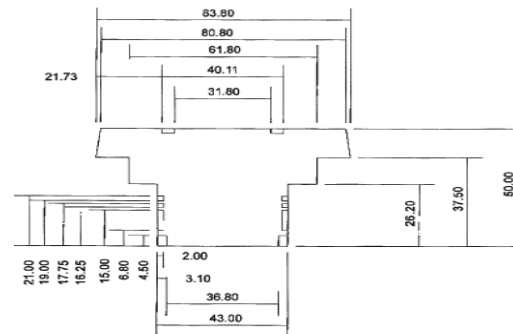
TYPE NO.	LENGTH	WIDTH	HEIGHT	DESCRIPTION
CMEB	90mm	17.5mm	59mm	17.5mm Module box
CMEB/E	90mm	17.5mm	59mm	Extension



CMEB max PCB Dimensions

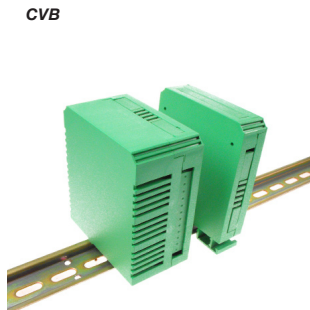


CMEB/E max PCB Dimensions



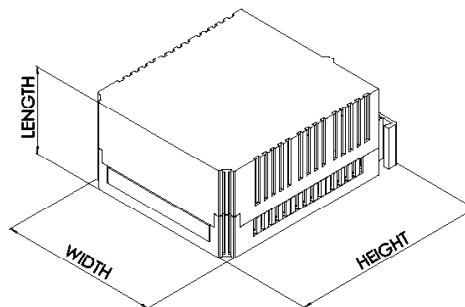
Vertical Box for DIN Rail

- Designed for 5mm pitch terminal blocks
- Two sizes, 22.5mm or 45mm wide
- Solid & perforated plates to cover unused terminal areas
- Three sides accept 12-way terminal blocks each side
- Complete box contains one 12-way closed, three 4-way closed & three 4-way perforated plates



SPECIFICATION

Rating Terminals	8A/250VAC
Cable entry	2x2.5mm ² Solid or Standard
Terminal protection	IP20
Material	PA66 UL94-V0



TYPE NO.	DESCRIPTION	SIZE
CVB225/KIT	Complete plastic box	22.5x82x101.75mm
CVB450/KIT	Complete plastic box	45x82x101.75mm
CVBPF4	4 way perforated	CVB Vent Plate
CVBPP4	4 way closed plate	CVB Blind Plate
CVBPP12	12 way closed plate	CVB Blind Plate Long
CVBMSC	Prototyping board	



+44 (0)1638 716101
info@camdenboss.com
www.camdenboss.com

We operate a constant improvement policy, our products are subject to change without notice.

Ver 1.0 Iss 1

UNIVERSAL ENCLOSURES

HAND HELD CASES

HEAVY DUTY ENCLOSURES

DIN RAIL BOXES

INTERFACE SUPPORTS

CONTROL STATIONS

DIECAST & METAL BOXES

DESKTOP & INSTRUMENT CASES

POTTING BOXES

19" ENCLOSURES

19" CABINETS

DEVELOPMENT BOARDS

CUSTOM SIZED ENCLOSURES

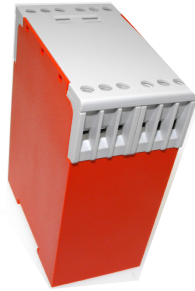
CUSTOM SERVICES

DIN RAIL BOXES

Controls Housing (DIN Rail mounting)

- 12 terminals
- Internal PCB guides
- Snap fit DIN Rail mounting fixtures
- Moulded in Grey Flame Retardant UL94-V0 PC
- Removable top cover
- Integral marker plate
- For G-rail mounting adaptors available
- Terminals have PCB pins to minimize internal wiring

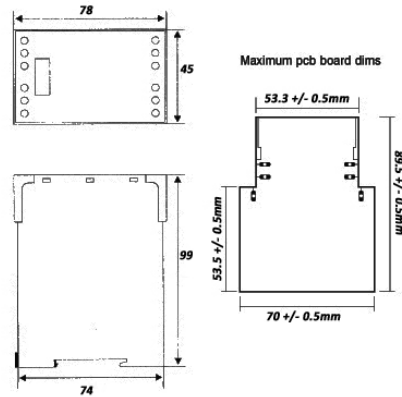
CCH12



TYPE NO.	DESCRIPTION
CCH12	12 terminal controls housing

SPECIFICATION

Rating	250VAC	10A
Cable entry	Solid	2x2.5 mm ²
	Stranded	2x1.5mm ²



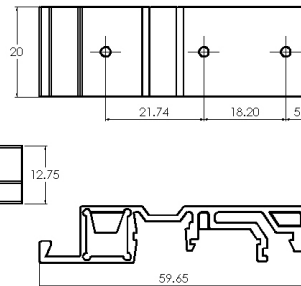
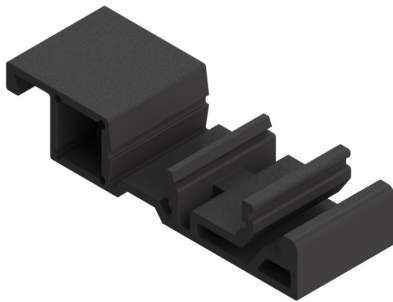
DIN Rail Mount Bracket

DIN Rail Mount Bracket enables enclosures to be DIN Rail Mounted

- Supplied screws allow the DIN Rail Mount Bracket to fasten to the enclosure surface. Two clearance holes will need to be drilled into the enclosure
- The DIN Rail Mount bracket is designed for Standard Top Hat 35mm DIN Rail, Mini Top Hat 15mm Rail and G Section 32mm Rail
- For wide enclosures it is recommended to use 2x Brackets

SPECIFICATION

Material	UL94-V0, PA68
Operating Temperature	-20°C to +85°C
Colour	Black Ral 9005
Standard unit includes	1x DIN Rail Mount Bracket, 2x Screws



TYPE NO.	DESCRIPTION
CDR-BRACKET	DIN Rail Mount Bracket

DIN Rail Adaptor

A one piece adaptor to adapt relay bases and enclosures to G-rail and mini DIN rails

- Snap fit Din Rail mounting fixtures
- Moulded in Flame retardant UL94-V0
- Symmetrical (35mm)
- Asymmetrical (G-rail)
- Mini Symmetrical (15mm)

CDR/Adaptor



TYPE NO.	DESCRIPTION
CDR/Adaptor	DIN Rail Adaptor

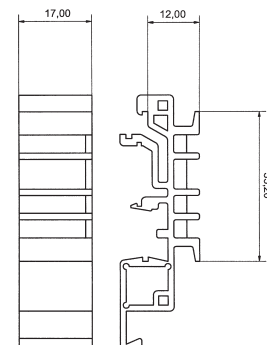
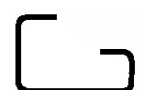
Mini Top Hat 15mm



Standard Top Hat 3:



G Section 32mm



UNIVERSAL ENCLOSURES

HAND HELD CASES

HEAVY DUTY ENCLOSURES

DIN RAIL BOXES

INTERFACE SUPPORTS

CONTROL STATIONS

DIECAST & METAL BOXES

DESKTOP & INSTRUMENT CASES

POTTING BOXES

19" ENCLOSURES

19" SUBRACKS

CUSTOM SIZED ENCLOSURES

CUSTOM SERVICES



+44 (0)1638 716101
info@camdenboss.com
www.camdenboss.com

We operate a constant improvement policy, our products are subject to change without notice.

Ver 1.0

CAMDENBOSS
ELECTRONICS & ENCLOSURES

X-ON Electronics

Largest Supplier of Electrical and Electronic Components

Click to view similar products for [camden manufacturer](#):

Other Similar products are found below :

[412689X](#) [CTBP92VE/12R](#) [CTBP9350/12](#) [IND515205-240-T/GRN](#) [IND515205-240-T/RD](#) [IND5032405-240-T/GRN](#) [CE10.00.EI](#)
[C192SHAND](#) [CNMB/6ST/2](#) [CNMB/4ST/2](#) [CSACST004](#) [CTBP9200/9](#) [CIME/M/BE2250SS](#) [CHH64E1BL](#) [CIM/15W-DMFS](#) [CHHBAT2GY](#)
[CFTBN/2](#) [CCB2S1/04](#) [CHDX6-221C](#) [CHDX8-224](#) [CHDASMP29](#) [CHDASMP34](#) [CHDX810DD](#) [CHDX811DD](#) [CCTTM40LR](#)
[CTBP92VJ/5S](#) [CTBP92VJ/8R](#) [CTSN431/12/M](#) [CTSN433/12/M](#) [CUABOX006](#) [CE10.00.FM](#) [CBRPH-BLK](#) [BIM2003/13-WH/WH](#)
[RX2008/S-5-WH](#) [CBARD-CAR](#) [CRDCG0007](#) [CNMB/4/KIT](#) [CTB5050/5](#) [CTBP92HE/11](#) [CTBP9358/10AO](#) [CHH66C2GY](#) [CHH456PBK](#)
[CHH451ABK](#) [CIM/9W-DMFS](#) [CIM/25W-DMFS](#) [RTM5006/16-NC-BLK](#) [IND5032405-125-T/AMB](#) [CCB1S1/03](#) [CCD2S1/04](#) [CCE1S1/05](#)