

CAMBLOCK PLUS

PCB
TERMINAL
BLOCKS

PCB mounting male vertical (open ended)

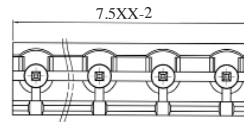
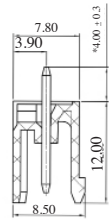
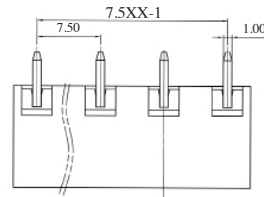
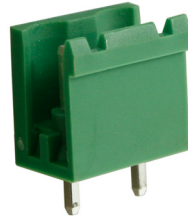
7.5mm

TYPE NO.	POLES	LENGTH
CTBP9500/2AO	2	13mm
CTBP9500/3AO	3	20.5mm
CTBP9500/4AO	4	28mm
CTBP9500/5AO	5	35.5mm
CTBP9500/6AO	6	43mm
CTBP9500/7AO	7	50.5mm
CTBP9500/8AO	8	58mm
CTBP9500/9AO	9	65.5mm
CTBP9500/10AO	10	73mm
CTBP9500/11AO	11	80.5mm
CTBP9500/12AO	12	88mm

7.62mm

TYPE NO.	POLES	LENGTH
CTBP9508/2AO	2	13.2mm
CTBP9508/3AO	3	20.9mm
CTBP9508/4AO	4	28.5mm
CTBP9508/5AO	5	36.1mm
CTBP9508/6AO	6	43.7mm
CTBP9508/7AO	7	51.3mm
CTBP9508/8AO	8	59mm
CTBP9508/9AO	9	66.6mm
CTBP9508/10AO	10	74.2mm
CTBP9508/11AO	11	81.8mm
CTBP9508/12AO	12	89.4mm

CTBP9500/AO



PCB mounting male horizontal (open ended)

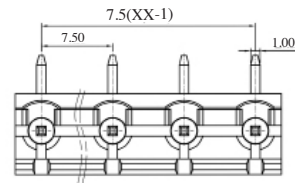
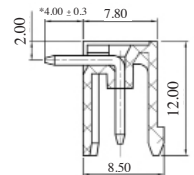
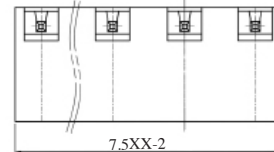
7.5mm

TYPE NO.	POLES	LENGTH
CTBP9550/2AO	2	13mm
CTBP9550/3AO	3	20.5mm
CTBP9550/4AO	4	28mm
CTBP9550/5AO	5	35.5mm
CTBP9550/6AO	6	43mm
CTBP9550/7AO	7	50.5mm
CTBP9550/8AO	8	58mm
CTBP9550/9AO	9	65.5mm
CTBP9550/10AO	10	73mm
CTBP9550/11AO	11	80.5mm
CTBP9550/12AO	12	88mm

7.62mm

TYPE NO.	POLES	LENGTH
CTBP9558/2AO	2	13.2mm
CTBP9558/3AO	3	20.9mm
CTBP9558/4AO	4	28.5mm
CTBP9558/5AO	5	36.1mm
CTBP9558/6AO	6	43.7mm
CTBP9558/7AO	7	51.3mm
CTBP9558/8AO	8	59mm
CTBP9558/9AO	9	66.6mm
CTBP9558/10AO	10	74.2mm
CTBP9558/11AO	11	81.8mm
CTBP9558/12AO	12	89.4mm

CTBP9550/AO



X-ON Electronics

Largest Supplier of Electrical and Electronic Components

Click to view similar products for [Camden manufacturer](#):

Other Similar products are found below :

[CCTTR30RD](#) [412689X](#) [CTBP92VE/12R](#) [CTBP9350/12](#) [IND515205-240-T/GRN](#) [IND515205-240-T/RD](#) [CDIC00002](#) [CCTTC0G](#)
[BIM2006/16-ORG/ORG](#) [BIM2005/15-GY/GY](#) [C192SHAND](#) [RTM5006/16-PAT](#) [CNMB/5V/KIT](#) [CNMB/12/KIT](#) [CTB9350/12FL](#)
[CTBP9358/11](#) [CIME/M/BE2250SS](#) [CHH64E1BL](#) [CHD774004](#) [CIM/15W-DMFS](#) [CFTBN/2](#) [CCB2S1/04](#) [CHDX7-225C](#) [CHDX8-221](#)
[CHDX8-225](#) [CHDX8-221C](#) [CHDX8-224C](#) [CHDX810DD](#) [CHDX811DD](#) [CHDX814DD](#) [CTBP92VD/5R](#) [CTBP92VJ/8R](#) [CTSN431/12/M](#)
[CE10.00.EI](#) [CUABOX012](#) [CBRPH-BLK](#) [BIM2004/LUG-GY/GY](#) [BIM2005/IP-BLK](#) [RTM108-BLK](#) [CRDCG0008](#) [CNMB/4/KIT](#)
[CSACTT001](#) [CTB5050/5](#) [CTBP92HE/11](#) [CTBP9358/10AO](#) [CTSOS431/12BK](#) [CTBP93VE/5](#) [CHH66C2GY](#) [RTM5006/16-NC-BLK](#)
[IND5032405-125-T/AMB](#)