


# PCB TERMINAL BLOCKS

## 5mm DIN Rail Mounted Inverted/Reverse

- Horizontal orientations
- Polarized moldings
- Can be reversed on DIN clips
- Also available in 5.08mm pitch
- Molded in green UL94-V0 flame retardant PA 66
- 2.5mm<sup>2</sup> (28-14AWG)
-  approved
- 6-12 poles standard (13-24 also available)

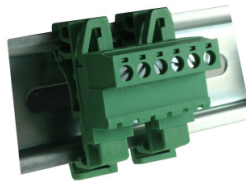
### SPECIFICATION

Rating	UL=15A/300V IEC 20A/450V
Insulation resistance	500MΩ/500V
Withstand Voltage	AC2000V/1min
Contact Resistance	20mΩ (max)
Working Temperature	-40°C to 105+°C
Mouldings	UL94-V0 Flame retardant PA66
Pin/Terminal	Brass, Tin plated
Rising Clamp	Brass, nickel plated
Screw/Torque	M3 Steel, zinc plated 0.5Nm

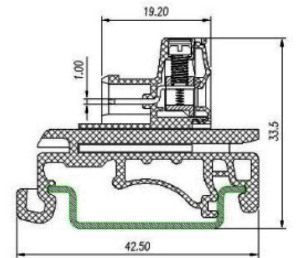
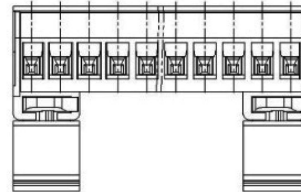
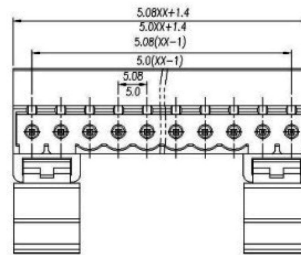
### DIN Rail Mounting Female Horizontal

TYPE NO.	POLES	LENGTH
CTBPD96HG/6	6	31.4mm
CTBPD96HG/7	7	36.4mm
CTBPD96HG/8	8	41.4mm
CTBPD96HG/9	9	46.4mm
CTBPD96HG/10	10	51.4mm
CTBPD96HG/11	11	56.4mm
CTBPD96HG/12	12	61.4mm

CTBPD96HG



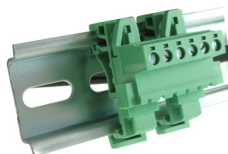
Excludes DIN Rail



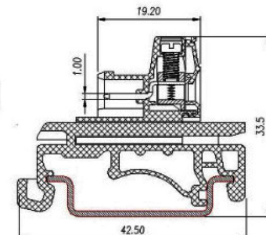
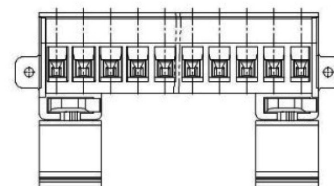
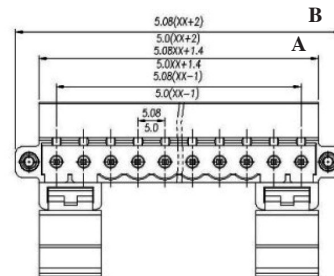
### DIN Rail Mounting Female Horizontal, Flanged

TYPE NO.	POLES	LENGTH A	LENGTH B
CTBPD96HG/6FL	6	31.4mm	40.0mm
CTBPD96HG/7FL	7	36.4mm	45.0mm
CTBPD96HG/8FL	8	41.4mm	50.0mm
CTBPD96HG/9FL	9	46.4mm	55.0mm
CTBPD96HG/10FL	10	51.4mm	60.0mm
CTBPD96HG/11FL	11	56.4mm	65.0mm
CTBPD96HG/12FL	12	61.4mm	70.0mm

CTBPD96HG/FL




Excludes DIN Rail



# PCB TERMINAL BLOCKS

## 5.08mm DIN Rail Mounted Inverted/Reverse

- Horizontal & vertical orientations
- Polarized moldings
- Can be reversed on DIN clips
- Also available in 5mm pitch
- Molded in green UL94-V0 flame retardant PA 66
- 2.5mm<sup>2</sup> (28-14AWG)
-  approved
- 6-12 poles standard (13-24 also available)

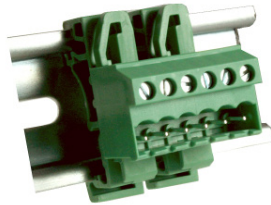
### SPECIFICATION

Rating	UL=15A/300V IEC 20A/450V
Insulation resistance	500MΩ/500V
Withstand Voltage	AC2000V/1min
Contact Resistance	20mΩ (max)
Working Temperature	-40°C to 105+°C
Mouldings	UL94-V0 Flame retardant PA66
Pin/Terminal	Brass, Tin plated
Rising Clamp	Brass, nickel plated
Screw/Torque	M3 Steel, zinc plated 0.5Nm

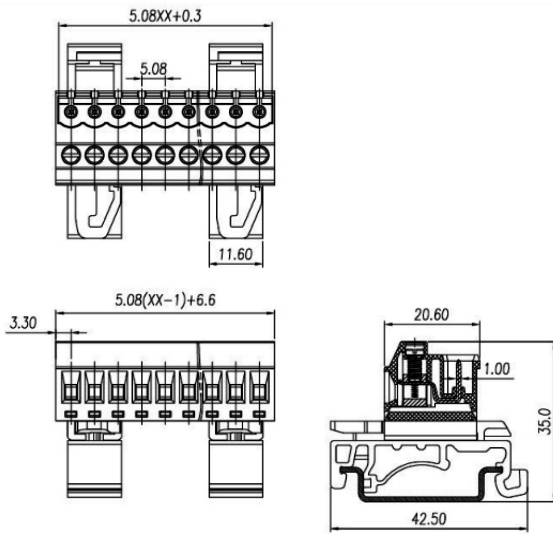
### DIN Rail Male Vertical Connector

TYPE NO.	POLES	LENGTH
CTBPD96VJ/6	6	32.0mm
CTBPD96VJ/7	7	37.1mm
CTBPD96VJ/8	8	42.2mm
CTBPD96VJ/9	9	47.2mm
CTBPD96VJ/10	10	52.3mm
CTBPD96VJ/11	11	57.4mm
CTBPD96VJ/12	12	62.5mm

CTBPD96VJ



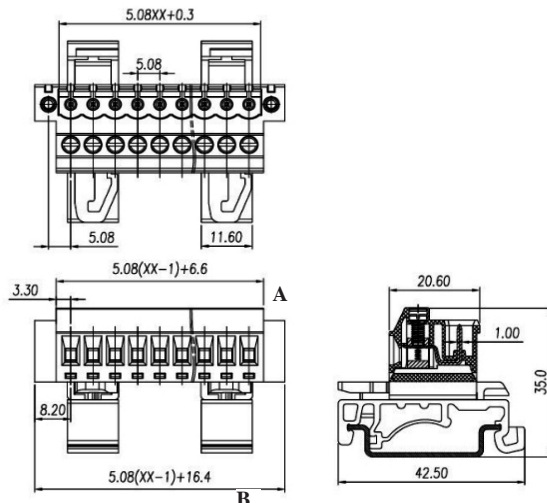
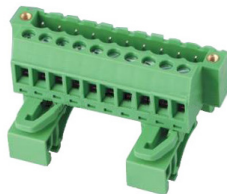
Excludes DIN Rail



### DIN Rail Male Vertical Connector, Flanged

TYPE NO.	POLES	LENGTH A	LENGTH B
CTBPD96VJ/6FL	6	32.0mm	41.8mm
CTBPD96VJ/7FL	7	37.1mm	46.9mm
CTBPD96VJ/8FL	8	42.2mm	52.0mm
CTBPD96VJ/9FL	9	47.2mm	57.0mm
CTBPD96VJ/10FL	10	52.3mm	62.1mm
CTBPD96VJ/11FL	11	57.4mm	67.2mm
CTBPD96VJ/12FL	12	62.5mm	72.3mm

CTBPD96VJ/FL



PCB  
TERMINAL  
BLOCKS

INTER-  
CONNECTION

FUSES &  
FUSE-  
HOLDERS

LEDs &  
INDICATORS

MINIATURE  
SWITCHES

LIMIT &  
SAFETY  
SWITCHES

CONTROL  
PRODUCTS

INTERFACE  
MODULES &  
SUPPORTS

RELAY  
BASES

DIN RAIL  
ENCLOSURES

BATTERIES

SOLAR  
PANELS

TRANS-  
FORMERS

# PCB TERMINAL BLOCKS

**PCB TERMINAL BLOCKS**

**INTER-CONNECTION**

**FUSES & FUSE-HOLDERS**

**LEDs & INDICATORS**

**MINIATURE SWITCHES**

**LIMIT & SAFETY SWITCHES**

**CONTROL PRODUCTS**

**INTERFACE MODULES & SUPPORTS**

**RELAY BASES**

**DIN RAIL ENCLOSURES**

**BATTERIES**

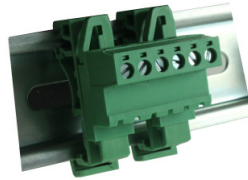
**SOLAR PANELS**

**TRANSFORMERS**

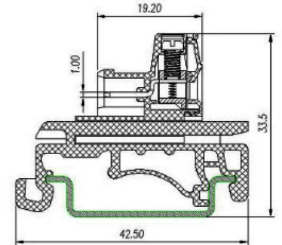
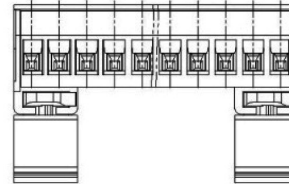
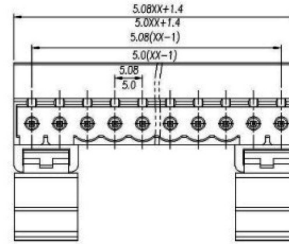
## 5.08mm DIN Rail Mounting Female Horizontal

TYPE NO.	POLES	LENGTH
CTBPD96HJ/6	6	31.9mm
CTBPD96HJ/7	7	37.0mm
CTBPD96HJ/8	8	42.0mm
CTBPD96HJ/9	9	47.1mm
CTBPD96HJ/10	10	52.2mm
CTBPD96HJ/11	11	57.3mm
CTBPD96HJ/12	12	62.4mm

CTBPD96HJ



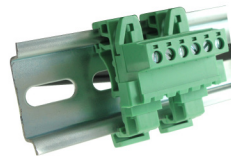
Excludes DIN Rail



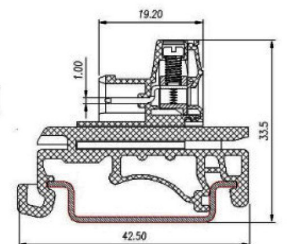
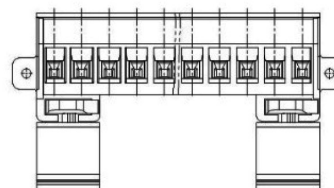
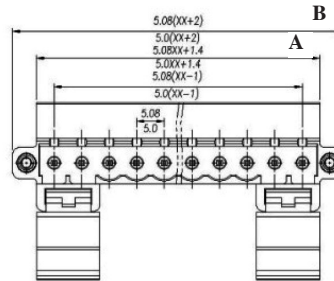
## 5.08mm DIN Rail Mounting Female Horizontal, Flanged

TYPE NO.	POLES	LENGTH A	LENGTH B
CTBPD96HJ/6FL	6	31.9mm	40.6mm
CTBPD96HJ/7FL	7	37.0mm	45.7mm
CTBPD96HJ/8FL	8	42.0mm	50.8mm
CTBPD96HJ/9FL	9	47.1mm	55.9mm
CTBPD96HJ/10FL	10	52.2mm	61.0mm
CTBPD96HJ/11FL	11	57.3mm	66.0mm
CTBPD96HJ/12FL	12	62.4mm	71.1mm

CTBPD96HJ/FL



Excludes DIN Rail



## **X-ON Electronics**

Largest Supplier of Electrical and Electronic Components

*Click to view similar products for [Camden manufacturer](#):*

Other Similar products are found below :

[CCTTR30RD](#) [412689X](#) [CTBP92VE/12R](#) [CTBP9350/12](#) [IND515205-240-T/GRN](#) [IND515205-240-T/RD](#) [CDIC00002](#) [CCTTC0G](#)  
[BIM2006/16-ORG/ORG](#) [BIM2005/15-GY/GY](#) [C192SHAND](#) [RTM5006/16-PAT](#) [CNMB/5V/KIT](#) [CNMB/12/KIT](#) [CTB9350/12FL](#)  
[CTBP9358/11](#) [CIME/M/BE2250SS](#) [CHH64E1BL](#) [CHD774004](#) [CIM/15W-DMFS](#) [CFTBN/2](#) [CCB2S1/04](#) [CHDX7-225C](#) [CHDX8-221](#)  
[CHDX8-225](#) [CHDX8-221C](#) [CHDX8-224C](#) [CHDX810DD](#) [CHDX811DD](#) [CHDX814DD](#) [CTBP92VD/5R](#) [CTBP92VJ/8R](#) [CTSN431/12/M](#)  
[CE10.00.EI](#) [CUABOX012](#) [CBRPH-BLK](#) [BIM2004/LUG-GY/GY](#) [BIM2005/IP-BLK](#) [RTM108-BLK](#) [CRDCG0008](#) [CNMB/4/KIT](#)  
[CSACTT001](#) [CTB5050/5](#) [CTBP92HE/11](#) [CTBP9358/10AO](#) [CTSOS431/12BK](#) [CTBP93VE/5](#) [CHH66C2GY](#) [RTM5006/16-NC-BLK](#)  
[IND5032405-125-T/AMB](#)